

## [MS-WSTEP-Diff]:

# WS-Trust X.509v3 Token Enrollment Extensions

---

### Intellectual Property Rights Notice for Open Specifications Documentation

- **Technical Documentation.** Microsoft publishes Open Specifications documentation (“this documentation”) for protocols, file formats, data portability, computer languages, and standards support. Additionally, overview documents cover inter-protocol relationships and interactions.
- **Copyrights.** This documentation is covered by Microsoft copyrights. Regardless of any other terms that are contained in the terms of use for the Microsoft website that hosts this documentation, you can make copies of it in order to develop implementations of the technologies that are described in this documentation and can distribute portions of it in your implementations that use these technologies or in your documentation as necessary to properly document the implementation. You can also distribute in your implementation, with or without modification, any schemas, IDLs, or code samples that are included in the documentation. This permission also applies to any documents that are referenced in the Open Specifications documentation.
- **No Trade Secrets.** Microsoft does not claim any trade secret rights in this documentation.
- **Patents.** Microsoft has patents that might cover your implementations of the technologies described in the Open Specifications documentation. Neither this notice nor Microsoft's delivery of this documentation grants any licenses under those patents or any other Microsoft patents. However, a given Open Specifications document might be covered by the Microsoft [Open Specifications Promise](#) or the [Microsoft Community Promise](#). If you would prefer a written license, or if the technologies described in this documentation are not covered by the Open Specifications Promise or Community Promise, as applicable, patent licenses are available by contacting [iplg@microsoft.com](mailto:iplg@microsoft.com).
- **License Programs.** To see all of the protocols in scope under a specific license program and the associated patents, visit the [Patent Map](#).
- **Trademarks.** The names of companies and products contained in this documentation might be covered by trademarks or similar intellectual property rights. This notice does not grant any licenses under those rights. For a list of Microsoft trademarks, visit [www.microsoft.com/trademarks](http://www.microsoft.com/trademarks).
- **Fictitious Names.** The example companies, organizations, products, domain names, email addresses, logos, people, places, and events that are depicted in this documentation are fictitious. No association with any real company, organization, product, domain name, email address, logo, person, place, or event is intended or should be inferred.

**Reservation of Rights.** All other rights are reserved, and this notice does not grant any rights other than as specifically described above, whether by implication, estoppel, or otherwise.

**Tools.** The Open Specifications documentation does not require the use of Microsoft programming tools or programming environments in order for you to develop an implementation. If you have access to Microsoft programming tools and environments, you are free to take advantage of them. Certain Open Specifications documents are intended for use in conjunction with publicly available standards specifications and network programming art and, as such, assume that the reader either is familiar with the aforementioned material or has immediate access to it.

**Support.** For questions and support, please contact [dochelp@microsoft.com](mailto:dochelp@microsoft.com).

## Revision Summary

Date	Revision History	Revision Class	Comments
12/5/2008	0.1	Major	Initial Availability
1/16/2009	0.1.1	Editorial	Changed language and formatting in the technical content.
2/27/2009	0.1.2	Editorial	Changed language and formatting in the technical content.
4/10/2009	0.1.3	Editorial	Changed language and formatting in the technical content.
5/22/2009	0.2	Minor	Clarified the meaning of the technical content.
7/2/2009	1.0	Major	Updated and revised the technical content.
8/14/2009	1.1	Minor	Clarified the meaning of the technical content.
9/25/2009	2.0	Major	Updated and revised the technical content.
11/6/2009	3.0	Major	Updated and revised the technical content.
12/18/2009	4.0	Major	Updated and revised the technical content.
1/29/2010	5.0	Major	Updated and revised the technical content.
3/12/2010	5.1	Minor	Clarified the meaning of the technical content.
4/23/2010	5.1.1	Editorial	Changed language and formatting in the technical content.
6/4/2010	5.1.2	Editorial	Changed language and formatting in the technical content.
7/16/2010	6.0	Major	Updated and revised the technical content.
8/27/2010	6.0	None	No changes to the meaning, language, or formatting of the technical content.
10/8/2010	6.0	None	No changes to the meaning, language, or formatting of the technical content.
11/19/2010	6.0	None	No changes to the meaning, language, or formatting of the technical content.
1/7/2011	6.0	None	No changes to the meaning, language, or formatting of the technical content.
2/11/2011	6.0	None	No changes to the meaning, language, or formatting of the technical content.
3/25/2011	6.0	None	No changes to the meaning, language, or formatting of the technical content.
5/6/2011	6.0	None	No changes to the meaning, language, or formatting of the technical content.
6/17/2011	6.1	Minor	Clarified the meaning of the technical content.
9/23/2011	6.1	None	No changes to the meaning, language, or formatting of the technical content.
12/16/2011	7.0	Major	Updated and revised the technical content.
3/30/2012	7.0	None	No changes to the meaning, language, or formatting of the

<b>Date</b>	<b>Revision History</b>	<b>Revision Class</b>	<b>Comments</b>
			technical content.
7/12/2012	7.1	Minor	Clarified the meaning of the technical content.
10/25/2012	7.2	Minor	Clarified the meaning of the technical content.
1/31/2013	7.2	None	No changes to the meaning, language, or formatting of the technical content.
8/8/2013	8.0	Major	Updated and revised the technical content.
11/14/2013	8.0	None	No changes to the meaning, language, or formatting of the technical content.
2/13/2014	8.0	None	No changes to the meaning, language, or formatting of the technical content.
5/15/2014	8.1	Minor	Clarified the meaning of the technical content.
6/30/2015	9.0	Major	Significantly changed the technical content.
10/16/2015	9.0	None	No changes to the meaning, language, or formatting of the technical content.
7/14/2016	9.0	None	No changes to the meaning, language, or formatting of the technical content.
6/1/2017	10.0	Major	Significantly changed the technical content.
9/15/2017	11.0	Major	Significantly changed the technical content.
12/1/2017	11.0	None	No changes to the meaning, language, or formatting of the technical content.
9/12/2018	12.0	Major	Significantly changed the technical content.
4/7/2021	13.0	Major	Significantly changed the technical content.
<b>6/25/2021</b>	<b>14.0</b>	<b>Major</b>	<b>Significantly changed the technical content.</b>

# Table of Contents

<b>1</b>	<b>Introduction .....</b>	<b>6</b>
1.1	Glossary .....	6
1.2	References .....	7
1.2.1	Normative References .....	7
1.2.2	Informative References .....	8
1.3	Overview .....	8
1.4	Relationship to Other Protocols .....	10
1.5	Prerequisites/Preconditions .....	11
1.6	Applicability Statement .....	11
1.7	Versioning and Capability Negotiation .....	11
1.8	Vendor-Extensible Fields .....	11
1.9	Standards Assignments.....	12
<b>2</b>	<b>Messages.....</b>	<b>13</b>
2.1	Transport.....	13
2.2	Common Message Syntax .....	13
2.2.1	Namespaces .....	13
2.2.2	Messages.....	13
2.2.3	Elements .....	13
2.2.4	Complex Types.....	13
2.2.5	Simple Types .....	13
2.2.6	Attributes .....	14
2.2.7	Groups .....	14
2.2.8	Attribute Groups.....	14
<b>3</b>	<b>Protocol Details .....</b>	<b>15</b>
3.1	SecurityTokenService Server Details.....	15
3.1.1	Abstract Data Model.....	16
3.1.1.1	Authentication .....	16
3.1.1.1.1	Kerberos Authentication .....	16
3.1.1.1.2	X.509v3 Certificate Authentication.....	16
3.1.1.1.3	Username and Password Authentication .....	16
3.1.1.1.4	No (Anonymous) Authentication .....	16
3.1.2	Timers .....	16
3.1.3	Initialization.....	16
3.1.4	Message Processing Events and Sequencing Rules .....	17
3.1.4.1	wst:RequestSecurityToken2 .....	17
3.1.4.1.1	Messages .....	17
3.1.4.1.1.1	wst:RequestSecurityTokenMsg .....	17
3.1.4.1.1.2	wst:RequestSecurityTokenResponseCollectionMsg.....	17
3.1.4.1.2	Elements.....	17
3.1.4.1.2.1	wstep:CertificateEnrollmentWSDetail.....	18
3.1.4.1.2.2	DispositionMessage .....	18
3.1.4.1.2.3	wst:KeyExchangeToken .....	18
3.1.4.1.2.4	RequestID.....	18
3.1.4.1.2.5	wst:RequestSecurityToken .....	18
3.1.4.1.2.6	RequestSecurityTokenResponseCollection .....	18
3.1.4.1.2.7	wst:RequestType .....	18
3.1.4.1.2.8	wst:TokenType .....	19
3.1.4.1.3	Complex Types .....	19
3.1.4.1.3.1	DispositionMessageType .....	19
3.1.4.1.3.2	wst:RequestedSecurityTokenType .....	19
3.1.4.1.3.3	wst:RequestSecurityTokenType .....	20
3.1.4.1.3.4	wst:RequestSecurityTokenResponseType .....	21
3.1.4.1.3.5	wst:RequestSecurityTokenResponseCollectionType .....	22

3.1.4.1.3.6	wst:RequestTypeEnum .....	23
3.1.4.1.3.7	wstep:CertificateEnrollmentWSDetailType .....	23
3.1.4.1.4	Attributes .....	24
3.1.4.2	Processing Rules .....	24
3.1.4.2.1	WSTEP Action: Request Security Token Processing Rules .....	24
3.1.4.2.1.1	New and Renewal Request Processing .....	24
3.1.4.2.1.2	QueryTokenStatus Request Processing .....	25
3.1.4.2.2	KET Action: Request Security Token Processing Rules .....	25
3.1.4.2.2.1	Key Exchange Token Request Processing .....	25
3.1.5	Timer Events.....	25
3.1.6	Other Local Events.....	26
<b>4</b>	<b>Protocol Examples .....</b>	<b>27</b>
4.1	RequestSecurityToken Request/Response Message Sequence .....	27
4.1.1	Standard Certificate Request.....	27
4.1.1.1	RequestSecurityToken Message (Issue Request) .....	27
4.1.1.2	Server RequestSecurityToken Response.....	28
4.1.2	Key Exchange Token Request.....	30
4.1.2.1	Client Exchange Token Request .....	30
4.1.2.2	Server Key Exchange Token Response.....	31
4.1.3	Retrieval of a previously pended certificate request with Query Token Status .....	32
4.1.3.1	Client Request .....	32
4.1.4	Message exchange with a server fault .....	32
4.1.4.1	Client Request .....	32
4.1.4.2	Server Fault Response .....	32
4.1.5	Certificate Renewal .....	33
4.1.5.1	Client Renewal Request .....	33
4.1.5.2	Server Request Security Token Response.....	35
<b>5</b>	<b>Security .....</b>	<b>38</b>
5.1	Security Considerations for Implementers .....	38
5.2	Index of Security Parameters .....	38
<b>6</b>	<b>Appendix A: Full WSDL .....</b>	<b>39</b>
<b>7</b>	<b>(Updated Section) Appendix B: Product Behavior.....</b>	<b>40</b>
<b>8</b>	<b>Change Tracking.....</b>	<b>41</b>
<b>9</b>	<b>Index.....</b>	<b>42</b>

# 1 Introduction

The WS-Trust X.509v3 Token Enrollment Extensions are extensions of WS-Trust that are used by a system to request that a certificate be issued.

The communication is initiated by a requesting client who requests a new certificate, retrieval of an issued certificate, or retrieval of a server certificate. The server processes the request and generates a response based on the request type.

Sections 1.5, 1.8, 1.9, 2, and 3 of this specification are normative. All other sections and examples in this specification are informative.

## 1.1 Glossary

This document uses the following terms:

**Abstract Syntax Notation One (ASN.1):** A notation to define complex data types to carry a message, without concern for their binary representation, across a network. ASN.1 defines an encoding to specify the data types with a notation that does not necessarily determine the representation of each value. ASN.1 encoding rules are sets of rules used to transform data that is specified in the ASN.1 language into a standard format that can be decoded on any system that has a decoder based on the same set of rules. ASN.1 and its encoding rules were once part of the same standard. They have since been separated, but it is still common for the terms ASN.1 and Basic Encoding Rules (BER) to be used to mean the same thing, though this is not the case. Different encoding rules can be applied to a given ASN.1 definition. The choice of encoding rules used is an option of the protocol designer. ASN.1 is described in the following specifications: [ITUX660] for general procedures; [ITUX680] for syntax specification; [ITUX690] for the Basic Encoding Rules (BER), Canonical Encoding Rules (CER), and Distinguished Encoding Rules (DER) encoding rules; and [ITUX691] for the Packed Encoding Rules (PER). Further background information on ASN.1 is also available in [DUBUISSON].

**certificate:** When referring to X.509v3 certificates, that information consists of a public key, a distinguished name (DN) of some entity assumed to have control over the private key corresponding to the public key in the certificate, and some number of other attributes and extensions assumed to relate to the entity thus referenced. Other forms of certificates can bind other pieces of information.

**Certificate Management Messages over CMS (CMC):** An internet standard for transport mechanisms for CMS [RFC2797].

**certification authority (CA):** A third party that issues public key certificates. Certificates serve to bind public keys to a user identity. Each user and certification authority (CA) can decide whether to trust another user or CA for a specific purpose, and whether this trust should be transitive. For more information, see [RFC3280].

**Hypertext Transfer Protocol Secure (HTTPS):** An extension of HTTP that securely encrypts and decrypts web page requests. In some older protocols, "Hypertext Transfer Protocol over Secure Sockets Layer" is still used (Secure Sockets Layer has been deprecated). For more information, see [SSL3] and [RFC5246].

**Public Key Cryptography Standards (PKCS):** A group of Public Key Cryptography Standards published by RSA Laboratories.

**security token service (STS):** A special type of server defined in WS-Trust [WSTrust1.3].

**SOAP action:** The HTTP request header field used to indicate the intent of the SOAP request, using a URI value. See [SOAP1.1] section 6.1.1 for more information.

**SOAP fault:** A container for error and status information within a SOAP message. See [SOAP1.2-1/2007] section 5.4 for more information.

**SOAP message:** An XML document consisting of a mandatory SOAP envelope, an optional SOAP header, and a mandatory SOAP body. See [SOAP1.2-1/2007] section 5 for more information.

**Unicode:** A character encoding standard developed by the Unicode Consortium that represents almost all of the written languages of the world. The Unicode standard [UNICODE5.0.0/2007] provides three forms (UTF-8, UTF-16, and UTF-32) and seven schemes (UTF-8, UTF-16, UTF-16 BE, UTF-16 LE, UTF-32, UTF-32 LE, and UTF-32 BE).

**Web Services Description Language (WSDL):** An XML format for describing network services as a set of endpoints that operate on messages that contain either document-oriented or procedure-oriented information. The operations and messages are described abstractly and are bound to a concrete network protocol and message format in order to define an endpoint. Related concrete endpoints are combined into abstract endpoints, which describe a network service. WSDL is extensible, which allows the description of endpoints and their messages regardless of the message formats or network protocols that are used.

**X.509:** An ITU-T standard for public key infrastructure subsequently adapted by the IETF, as specified in [RFC3280].

**XML:** The Extensible Markup Language, as described in [XML1.0].

**XML namespace:** A collection of names that is used to identify elements, types, and attributes in XML documents identified in a URI reference [RFC3986]. A combination of XML namespace and local name allows XML documents to use elements, types, and attributes that have the same names but come from different sources. For more information, see [XMLNS-2ED].

**XML Schema (XSD):** A language that defines the elements, attributes, namespaces, and data types for XML documents as defined by [XMLSCHEMA1/2] and [XMLSCHEMA2/2] standards. An XML schema uses XML syntax for its language.

**MAY, SHOULD, MUST, SHOULD NOT, MUST NOT:** These terms (in all caps) are used as defined in [RFC2119]. All statements of optional behavior use either MAY, SHOULD, or SHOULD NOT.

## 1.2 References

Links to a document in the Microsoft Open Specifications library point to the correct section in the most recently published version of the referenced document. However, because individual documents in the library are not updated at the same time, the section numbers in the documents may not match. You can confirm the correct section numbering by checking the Errata.

### 1.2.1 Normative References

We conduct frequent surveys of the normative references to assure their continued availability. If you have any issue with finding a normative reference, please contact dohelp@microsoft.com. We will assist you in finding the relevant information.

[MS-WCCE] Microsoft Corporation, "Windows Client Certificate Enrollment Protocol".

[RFC2119] Bradner, S., "Key words for use in RFCs to Indicate Requirement Levels", BCP 14, RFC 2119, March 1997, <http://www.rfc-editor.org/rfc/rfc2119.txt>

[RFC2797] Myers, M., Liu, X., Schaad, J., and Weinstein, J., "Certificate Management Messages Over CMS", RFC 2797, April 2000, <http://www.ietf.org/rfc/rfc2797.txt>

[RFC2986] Nystrom, M. and Kaliski, B., "PKCS#10: Certificate Request Syntax Specification", RFC 2986, November 2000, <http://www.ietf.org/rfc/rfc2986.txt>

[RFC3066] Alvestrand, H., "Tags for the Identification of Languages", BCP 47, RFC 3066, January 2001, <http://www.ietf.org/rfc/rfc3066.txt>

[RFC3852] Housley, R., "Cryptographic Message Syntax (CMS)", RFC 3852, July 2004, <http://www.ietf.org/rfc/rfc3852.txt>

[RFC5246] Dierks, T., and Rescorla, E., "The Transport Layer Security (TLS) Protocol Version 1.2", RFC 5246, August 2008, <http://www.ietf.org/rfc/rfc5246.txt>

[WSDL] Christensen, E., Curbera, F., Meredith, G., and Weerawarana, S., "Web Services Description Language (WSDL) 1.1", W3C Note, March 2001, <http://www.w3.org/TR/2001/NOTE-wsdl-20010315>

[WSSUTP] OASIS, "Web Services Security UsernameToken Profile 1.0", OASIS Standard, March 2004, <http://docs.oasis-open.org/wss/2004/01/oasis-200401-wss-username-token-profile-1.0.pdf>

[WSS] OASIS, "Web Services Security: SOAP Message Security 1.1 (WS-Security 2004)", February 2006, <http://www.oasis-open.org/committees/download.php/16790/wss-v1.1-spec-os-SOAPMessageSecurity.pdf>

[WSTrust1.3Schema] OASIS Standard, "WS-Trust 1.3", <http://docs.oasis-open.org/ws-sx/ws-trust/200512/ws-trust-1.3.xsd>

[WSTrust1.3] Lawrence, K., Kaler, C., Nadalin, A., et al., "WS-Trust 1.3", March 2007, <http://docs.oasis-open.org/ws-sx/ws-trust/200512/ws-trust-1.3-os.html>

[XMLNS] Bray, T., Hollander, D., Layman, A., et al., Eds., "Namespaces in XML 1.0 (Third Edition)", W3C Recommendation, December 2009, <http://www.w3.org/TR/2009/REC-xml-names-20091208/>

[XMLSCHEMA1] Thompson, H., Beech, D., Maloney, M., and Mendelsohn, N., Eds., "XML Schema Part 1: Structures", W3C Recommendation, May 2001, <http://www.w3.org/TR/2001/REC-xmlschema-1-20010502/>

[XMLSCHEMA2] Biron, P.V., Ed. and Malhotra, A., Ed., "XML Schema Part 2: Datatypes", W3C Recommendation, May 2001, <http://www.w3.org/TR/2001/REC-xmlschema-2-20010502/>

### 1.2.2 Informative References

[DUBUISSON] Dubuisson, O., "ASN.1 Communication between Heterogeneous Systems", Morgan Kaufmann, October 2000, ISBN: 0126333610.

[SCEP] Nourse, A., and Vilhuber, J. Ed., "Cisco Systems' Simple Certificate Enrollment Protocol", April 2009, <http://tools.ietf.org/html/draft-nourse-scep-19>

### 1.3 Overview

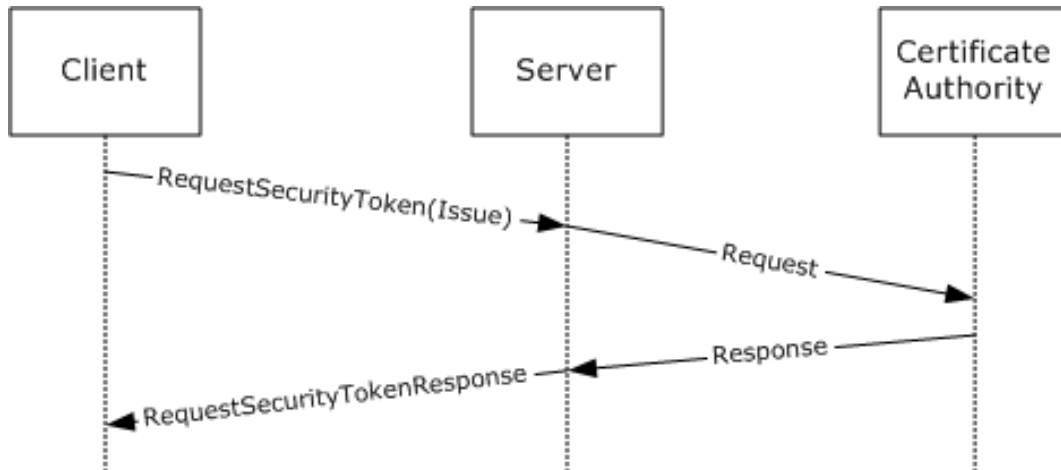
The WS-Trust X.509v3 Token Enrollment Extensions (WSTEP) defines the token enrollment profile for WS-Trust [WSTrust1.3] to allow a client to request X.509v3 certificates.

Existing certificate authorities (CAs) support Abstract Syntax Notation One (ASN.1) formats such as PKCS#10 ([RFC2986]), PKCS#7 ([RFC3852]), or CMC ([RFC2797]) to encode a certificate request, and those requests are carried in an existing protocol, such as Windows Client Certificate Enrollment Protocol [MS-WCCE] or Cisco's SCEP ([SCEP]). WSTEP also carries those requests from the client to the issuer.

WSTEP provides for issuance, renewal, and delayed-issuance scenarios for X.509v3 digital certificates. The server is known in WS-Trust [WSTrust1.3] terminology as a Security Token Service (STS).

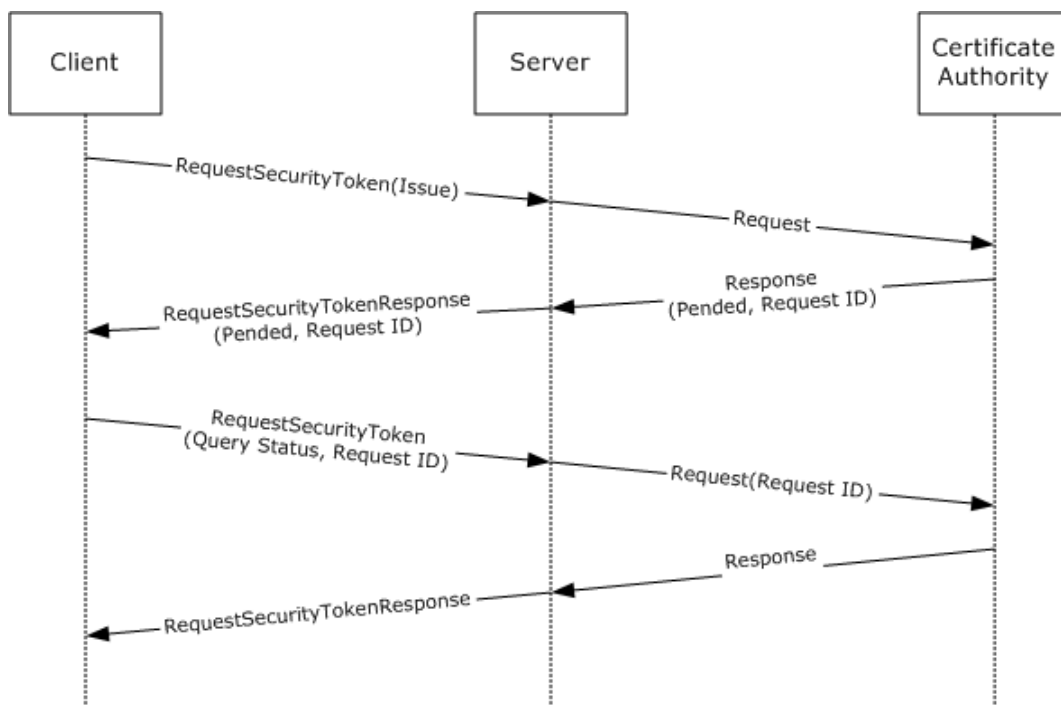


The WS-Trust protocol [WSTrust1.3] definition provides the framework for the STS and for enrollment profile extensions. A typical client interacts with a STS with a request security token (RST) message. The STS responds to a client request security token message with a request security token response (RSTR) or a SOAP fault.



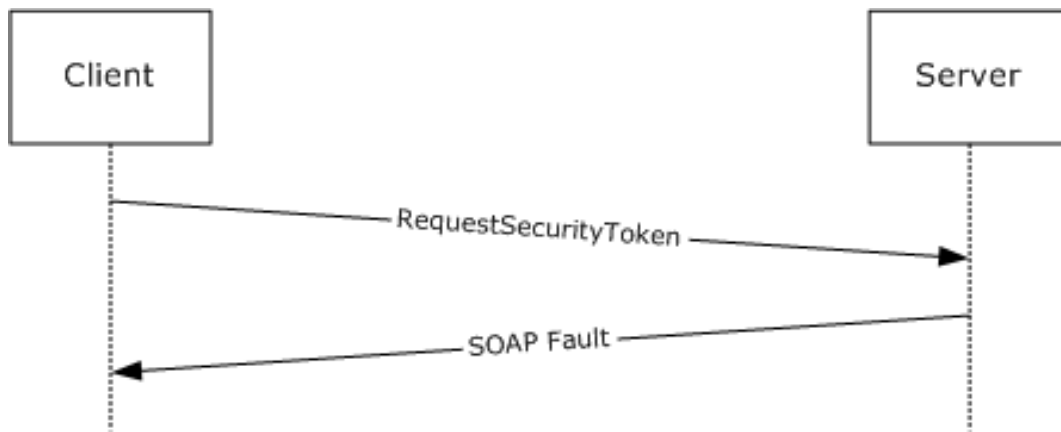
**Figure 1: Typical sequence for certificate enrollment**

The following figure shows a scenario in which a request cannot be satisfied immediately. In this scenario, the client makes a request, and the server reply indicates that the request is pending some other action. The client then queries the request at a later time, presumably after any conditions for its satisfaction have been met, and receives a reply that the request was issued, rejected, or is still pending.



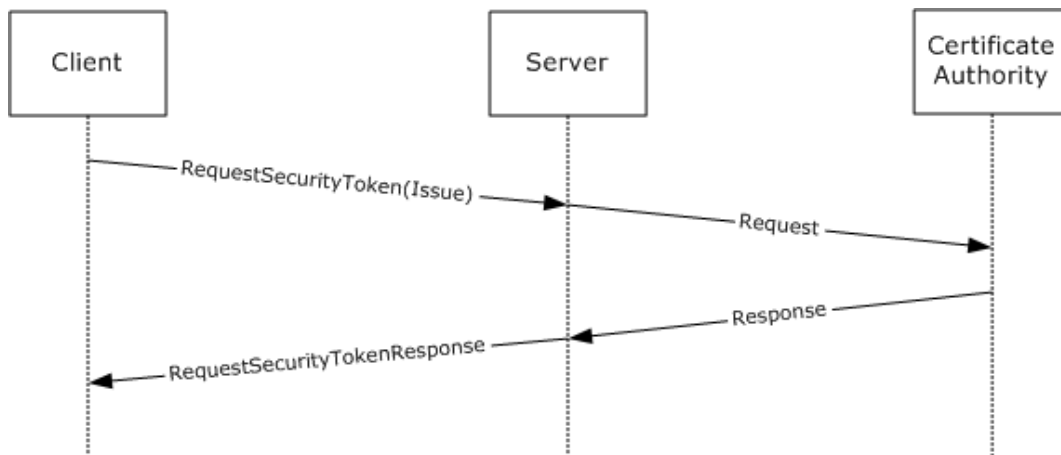
**Figure 2: Typical sequence for a pended certificate enrollment request**

In some circumstances, the client request could be rejected. In these instances, the STS responds with a SOAP fault. The following figure shows the typical sequence.



**Figure 3: Typical sequence for a rejected certificate renewal request**

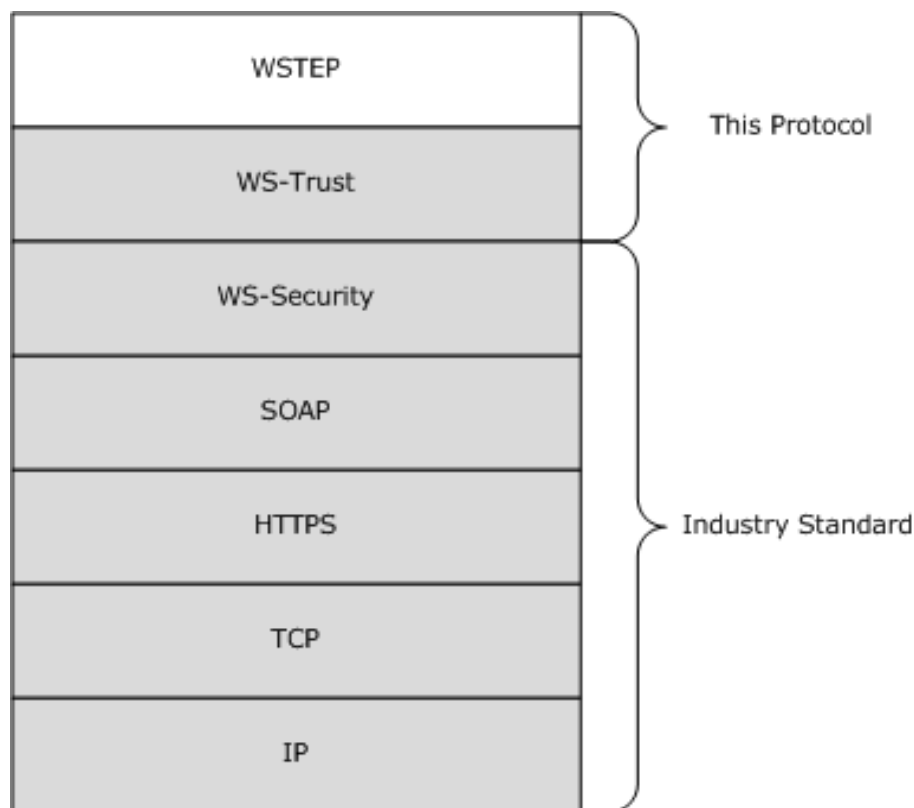
The following figure is an example of a message exchange for a renewal request. A renewal request uses an existing certificate and requests a new lifespan. From the point of view of the WSTEP protocol, this is the same as an issue request, as the message format is unchanged.



**Figure 4: Typical sequence for a certificate renewal request**

#### 1.4 Relationship to Other Protocols

The following figure shows the WSTEP Protocol stack diagram.



**Figure 5: WSTEP Protocol stack diagram**

The WSTEP protocol specification is a profile of the WS-Trust Protocol [WSTrust1.3] and makes use of the SOAP and Hypertext Transfer Protocol over Secure Sockets Layer (HTTPS) protocols for messaging and security.

### 1.5 Prerequisites/Preconditions

The WSTEP protocol specification facilitates the issuance of X.509v3 certificates. A server implementation of the protocol requires the functionality of a certificate authority, capable of interpreting requests in at least one of PKCS#7, PKCS#10, or Certificate Management Messages over CMS (CMC).

### 1.6 Applicability Statement

The WSTEP protocol specification is applicable only for requests for X.509v3 certificates.

### 1.7 Versioning and Capability Negotiation

The WSTEP protocol specification does not include versioning and capability negotiation.

### 1.8 Vendor-Extensible Fields

The WSTEP protocol specification does not include any vendor-extensible fields. WSTEP adheres to the WS-Trust 1.3 [WSTrust1.3] provided extension points.

## 1.9 Standards Assignments

None.

## 2 Messages

### 2.1 Transport

SOAP version 1.2 MUST be used for messaging for the WSTEP protocol. HTTPS protocol MUST be used as the transport.

### 2.2 Common Message Syntax

This section contains common definitions used by this protocol. The syntax of the definitions uses the XML schema as defined in [XMLSCHEMA1] and [XMLSCHEMA2], and the Web Services Description Language (WSDL) as defined in [WSDL].

#### 2.2.1 Namespaces

This specification defines and references various XML namespaces, using the mechanisms specified in [XMLNS]. Although this specification associates a specific XML namespace prefix for each XML namespace that is used, the choice of any particular XML namespace prefix is implementation-specific and not significant for interoperability.

Prefixes and XML namespaces used in this specification are as follows.

Prefix	Namespace URI	Reference
xs	http://www.w3.org/2001/XMLSchema	[XMLSCHEMA1]
wst	http://docs.oasis-open.org/ws-sx/ws-trust/200512	[WSTrust1.3]
auth	http://schemas.xmlsoap.org/ws/2006/12/authorization	[XMLSCHEMA1]
wsu	http://docs.oasis-open.org/wss/2004/01/oasis-200401-wss-wssecurity-utility-1.0.xsd	
wsse	http://docs.oasis-open.org/wss/2004/01/oasis-200401-wss-wssecurity-secext-1.0.xsd	
wstep	http://schemas.microsoft.com/windows/pki/2009/01/enrollment	This document

#### 2.2.2 Messages

None.

#### 2.2.3 Elements

This specification does not define any common XML schema element definitions.

#### 2.2.4 Complex Types

This specification does not define any common XML schema complex type definitions.

#### 2.2.5 Simple Types

The WSTEP protocol specification does not define any common XML schema simple type definitions.

## **2.2.6 Attributes**

The WSTEP protocol specification does not define any common XML schema attribute definitions.

## **2.2.7 Groups**

The WSTEP protocol specification does not define any common XML schema group definitions.

## **2.2.8 Attribute Groups**

The WSTEP protocol specification does not define any common XML schema attribute group definitions.

### 3 Protocol Details

The client side of this protocol is a simple pass-through. No additional timers or other state is required on the client side of this protocol. Calls made by the higher-layer protocol or application are passed directly to the transport layer, and the results returned by the transport are passed directly back to the higher-layer protocol or application.

This section addresses the message processing model for the protocol. It includes related information required by an implementation to successfully send and consume protocol messages.

#### 3.1 SecurityTokenService Server Details

The **SecurityTokenService** hosts a message endpoint that receives **RequestSecurityToken** messages. When received, the server processes the client request and sends it to the certificate authority. Upon receiving a response from the certificate authority, a response is generated, and the server sends either a **RequestSecurityTokenResponse** message or a SOAP fault. When the message has been sent to the client, the server returns to the waiting state.



**Figure 6: Security token service state model**

The items of information that are communicated between the server and the certificate authority are specified in this section, but the method of communication used, including timeout and error handling (local API, local remote procedure call (RPC), or some other protocol) is not specified.

The certificate authority MAY have additional requirements that MUST be met in order to issue an X.509v3 certificate, such as manager approval, payment processing, or validation of request information. In these instances, a certificate authority response indicating the issuance is pending.

### 3.1.1 Abstract Data Model

A server supporting the WSTEP protocol maintains a relationship to an issuer which processes messages submitted by the server. When communicating with requestors, a server can support a variety of languages.

**Issuer:** An address of a certificate authority (CA). The format of the stored address is specific to the implementation and to the form of communication used between the Issuer and the Server.

**SupportedLanguages:** A list of language identifiers supported by the server. The set of languages are of type xml:lang and defined in [RFC3066].

**DefaultLanguage:** The default language for the server. DefaultLanguage is of type xml:lang, and the set of supported languages is defined in [RFC3066].

#### 3.1.1.1 Authentication

The WS-Trust X.509v3 Token Enrollment Extensions use the authentication provisions in WS-Security ([WSS]) for the X.509v3 Security Token issuer to authenticate the X.509v3 Security Token requestor. This section defines the schema used to express the credential descriptor for each supported credential type.

##### 3.1.1.1.1 Kerberos Authentication

Authentication using Kerberos is done at the transport layer.

##### 3.1.1.1.2 X.509v3 Certificate Authentication

Authentication using X.509v3 certificates is done at the transport level using Transport Level Security (TLS) 1.2 as defined in [RFC5246].

##### 3.1.1.1.3 Username and Password Authentication

The username and password credential is provided in a request message using the WS-Security Username Token Profile 1.0. The username is provided as defined in section 3.1 of the Ws-Security document [WSSUTP].

##### 3.1.1.1.4 No (Anonymous) Authentication

If no authentication is provided at either the transport layer or the message layer, the request is considered to be anonymous. Anonymous authentication is supported only for renewal requests, where the signature from the existing certificate on the request object serves as authentication for the X.509v3 Security Token requestor.

### 3.1.2 Timers

None.

### 3.1.3 Initialization

The *SupportedLanguages* object MUST be initialized with the set of languages that the server supports.



The *DefaultLanguage* parameter MUST be initialized with the language that is to be used by the server when a request does not define a language preference, or the preference is not in *SupportedLanguages*.<1>

### 3.1.4 Message Processing Events and Sequencing Rules

Operation	Description
wst:RequestSecurityToken2	The wst:RequestSecurityToken2 operation is the sole operation in the WSTEP protocol. It provides the mechanism for certificate enrollment requests, retrieval of pending certificate status, and the request of the server key exchange certificate. The wst:RequestSecurityToken2 operation is defined in WS-Trust 1.3 [WSTrust1.3].

#### 3.1.4.1 wst:RequestSecurityToken2

The wst:RequestSecurityToken2 operation provides the mechanism for certificate enrollment requests, retrieval of pending certificate status, and the request of the server key exchange certificate. The wst:SecurityTokenService port and wst:RequestSecurityToken2 operation are defined in the [WSTrust1.3] WSDL wsdl:portType definition.

```
<wsdl:operation name="RequestSecurityToken2">  
  <wsdl:input message="wst:RequestSecurityTokenMsg" />  
  <wsdl:output message="wst:RequestSecurityTokenResponseCollectionMsg" />  
</wsdl:operation>
```

WSTEP makes use of the wst:RequestSecurityToken2 operation. The wst:RequestSecurityToken operation defined in the SecurityTokenService operation is not used. The **wst:RequestSecurityTokenMsg** message consists of a single object definition: the client request. The client request is made using the acceptable SOAP actions as defined in section 3.1.4.2 and RequestType values, as defined in section 3.1.4.1.2.7.

##### 3.1.4.1.1 Messages

The following WSDL message definitions are specific to this operation.

###### 3.1.4.1.1.1 wst:RequestSecurityTokenMsg

The wst:RequestSecurityTokenMsg is an incoming message, and is defined in WS-Trust 1.3 [WSTrust1.3] WSDL.

**wst:RequestSecurityToken:** An instance of a **wst:RequestSecurityTokenType** complex type as defined in section 3.1.4.1.3.3. The **wst:RequestSecurityToken** element defines the client request and the required information for it to be processed.

###### 3.1.4.1.1.2 wst:RequestSecurityTokenResponseCollectionMsg

The wst:RequestSecurityTokenResponseCollectionMsg is an outgoing message, and is defined in WS-Trust 1.3 [WSTrust1.3] WSDL.

**wst:RequestSecurityTokenResponseCollectionMsg:** An instance of a **wst:RequestSecurityTokenResponseCollection** element as defined in section 3.1.4.1.2.6. This element contains the results of the client request.

##### 3.1.4.1.2 Elements

### 3.1.4.1.2.1 wstep:CertificateEnrollmentWSDetail

The **wstep:CertificateEnrollmentWSDetail** element is used to convey additional information to a client as part of the SOAP fault structure when a server returns a SOAP fault.

```
<xs:element name="CertificateEnrollmentWSDetail" nillable="true"
type="wstep:CertificateEnrollmentWSDetailType" />
```

**wstep:CertificateEnrollmentWSDetail:** An instance of a `<wstep:CertificateEnrollmentWSDetailType>` as defined in section 3.1.4.1.3.7. If there is no additional information, the **wstep:CertificateEnrollmentWSDetail** SHOULD be omitted in the SOAP fault.

### 3.1.4.1.2.2 DispositionMessage

```
<xs:element name="DispositionMessage"
type="wstep:DispositionMessageType" nillable="true" />
```

**DispositionMessage:** An instance of a `DispositionMessageType` object as defined in section 3.1.4.1.3.1.

### 3.1.4.1.2.3 wst:KeyExchangeToken

The `<wst:KeyExchangeToken>` element is defined in WS-Trust 1.3 [WSTrust1.3] section 8.4.

**wst:KeyExchangeToken:** The `wst:KeyExchangeToken` element provides a key exchange token that can be used in certificate enrollment requests that include the private key.

### 3.1.4.1.2.4 RequestID

```
<xs:element name="RequestID"
type="xs:string" nillable="true"/>
```

**RequestID:** A string identifier used to identify a request.

### 3.1.4.1.2.5 wst:RequestSecurityToken

The `<wst:RequestSecurityToken>` element is defined in WS-Trust 1.3 [WSTrust1.3], section 3.1.

**wst:RequestSecurityToken:** An instance of a **wst:RequestSecurityTokenType** object as specified in section 3.1.4.1.3.3.

### 3.1.4.1.2.6 RequestSecurityTokenResponseCollection

The `RequestSecurityTokenResponseCollection` is defined in WS-Trust 1.3 [WSTrust1.3], section 3.2.

**RequestSecurityTokenResponseCollection:** An instance of a **wst:RequestSecurityTokenResponseCollectionType** object as specified in section 3.1.4.1.3.5.

### 3.1.4.1.2.7 wst:RequestType

The `<wst:RequestType>` element is defined in [WSTrust1.3] section 3.1.

**wst:RequestType:** An instance of a `<wst:RequestTypeOpenEnum>` object as defined in [WSTrust1.3] XML schema definition (XSD).

The <wst:RequestType> MUST have one of the following values:

```
"http://docs.oasis-open.org/ws-sx/ws-trust/200512/Issue"  
"http://schemas.microsoft.com/windows/pki/2009/01/enrollment/QueryTokenStatus"  
"http://docs.oasis-open.org/ws-sx/ws-trust/200512/KET"
```

If the <wst:RequestType> has any other value, the server MUST respond with a SOAP fault.

### 3.1.4.1.2.8 wst:TokenType

The <TokenType> element is defined in [WSTrust1.3], section 3.1.

**wst:TokenType:** For the X.509v3 enrollment extension to WS-Trust, the <wst:tokentype> element MUST be http://docs.oasis-open.org/wss/2004/01/oasis-200401-wss-x509-token-profile-1.0#X509v3.

### 3.1.4.1.3 Complex Types

The following XML schema complex type definitions are specific to this operation.

#### 3.1.4.1.3.1 DispositionMessageType

The DispositionMessageType is an extension to the string type that allows an attribute definition of the language for the string. The DispositionMessageType is used to provide additional information about the server processing.

```
<xs:complexType name="DispositionMessageType">  
  <xs:simpleContent>  
    <xs:extension base="xs:string">  
      <xs:attribute ref="xml:lang" use="optional" />  
    </xs:extension>  
  </xs:simpleContent>  
</xs:complexType>
```

**xs:string:** The string element contains the literal string disposition message returned from the server. The string element contains an xml:lang attribute that defines the language for the string. The language SHOULD be provided for each string element instance.

**xml:lang:** The language reference xml:lang, indicating the natural or formal language the string element content is written in.

#### 3.1.4.1.3.2 wst:RequestedSecurityTokenType

The wst:RequestedSecurityTokenType is defined in WS-Trust XML schema definition (XSD) [WSTrust1.3Schema].

```
<xs:complexType name="RequestedSecurityTokenType">  
  <xs:sequence>  
    <xs:any namespace="##any" processContents="lax" />  
  </xs:sequence>  
</xs:complexType>
```

The WSTEP extends wst: RequestedSecurityTokenType with two additional elements.

```
<xs:element ref="wsse:BinarySecurityToken" />
```

```
<xs:element ref="wsse:SecurityTokenReference" />
```

**wsse:BinarySecurityToken:** The wsse:BinarySecurityToken element contains the issued certificate. The issued certificate follows the encoding and data structure defined in [MS-WCCE] section 2.2.2.8.

**wsse:SecurityTokenReference:** A URI reference used to indicate where a pending Certificate Request can be retrieved. The server MUST provide its own URI as the value of the <wsse:BinarySecurityTokenReference:Reference> element as specified in [WSTrust1.3] section 4.2.

### 3.1.4.1.3.3 wst:RequestSecurityTokenType

The **wst:RequestSecurityTokenType** complex type contains the elements for the security token request in the RequestSecurityTokenMsg message. It is the client-provided object for a certificate enrollment request. **wst:RequestSecurityTokenType** is defined in the WS-Trust [WSTrust1.3] XML schema definition (XSD).

```
<xs:complexType name="RequestSecurityTokenType">
  <xs:annotation>
    <xs:documentation>
      Actual content model is non-deterministic, hence wildcard. The following shows intended
      content model:
      <xs:element ref='wst:TokenType' minOccurs='0' />
      <xs:element ref='wst:RequestType' />
      <xs:element ref='wsp:AppliesTo' minOccurs='0' />
      <xs:element ref='wst:Claims' minOccurs='0' />
      <xs:element ref='wst:Entropy' minOccurs='0' />
      <xs:element ref='wst:Lifetime' minOccurs='0' />
      <xs:element ref='wst:AllowPostdating' minOccurs='0' />
      <xs:element ref='wst:Renewing' minOccurs='0' />
      <xs:element ref='wst:OnBehalfOf' minOccurs='0' />
      <xs:element ref='wst:Issuer' minOccurs='0' />
      <xs:element ref='wst:AuthenticationType' minOccurs='0' />
      <xs:element ref='wst:KeyType' minOccurs='0' />
      <xs:element ref='wst:KeySize' minOccurs='0' />
      <xs:element ref='wst:SignatureAlgorithm' minOccurs='0' />
      <xs:element ref='wst:Encryption' minOccurs='0' />
      <xs:element ref='wst:EncryptionAlgorithm' minOccurs='0' />
      <xs:element ref='wst:CanonicalizationAlgorithm' minOccurs='0' />
      <xs:element ref='wst:ProofEncryption' minOccurs='0' />
      <xs:element ref='wst:UseKey' minOccurs='0' />
      <xs:element ref='wst:SignWith' minOccurs='0' />
      <xs:element ref='wst:EncryptWith' minOccurs='0' />
      <xs:element ref='wst:DelegateTo' minOccurs='0' />
      <xs:element ref='wst:Forwardable' minOccurs='0' />
      <xs:element ref='wst:Delegatable' minOccurs='0' />
      <xs:element ref='wsp:Policy' minOccurs='0' />
      <xs:element ref='wsp:PolicyReference' minOccurs='0' />
      <xs:any namespace='##other' processContents='lax' minOccurs='0' maxOccurs='unbounded'
    />
  />
</xs:documentation>
</xs:annotation>
<xs:sequence>
  <xs:any namespace="##any" processContents="lax" minOccurs="0" maxOccurs="unbounded" />
</xs:sequence>
<xs:attribute name="Context" type="xs:anyURI" use="optional" />
<xs:anyAttribute namespace="##other" processContents="lax" />
</xs:complexType>
```

WSTEP extends <wst:RequestSecurityTokenType> with the following elements:

```
<xs:element ref="wsse:BinarySecurityToken" minOccurs="0"
```

```

maxOccurs="1" />
<xs:element ref="auth:AdditionalContext" minOccurs="0"
maxOccurs="1" />
<xs:element ref="wst:RequestKET" minOccurs="0" maxOccurs="1" />
<xs:element ref="wstep:RequestID" minOccurs="0" maxOccurs="1" />

```

Only the elements specified below are used in WSTEP. Any element received that is not specified below SHOULD be ignored.

**wst:TokenType:** Refers to the wst:TokenType definition in section 3.1.4.1.2.8.

**wst:RequestType:** Refers to the wst:RequestType definition in section 3.1.4.1.2.7. The wst:RequestType is used to identify the type of the security token request.

**wst:RequestKET:** Used when requesting a key exchange token as defined in [WSTrust1.3] section 8.4.

**wsse:BinarySecurityToken:** Provides the DER ASN.1 representation of the certificate request. The type of token is defined by the wst:TokenType element. For the X.509v3 enrollment extension the wst:TokenType MUST be specified as in section 3.1.4.1.2.8. The certificate request follows the formatting from [MS-WCCE] section 2.2.2.6. The EncodingType attribute of the wsse:BinarySecurityToken element MUST be set to base64Binary.

**auth:AdditionalContext:** The auth:AdditionalContext element is used to provide extra information in a wst:RequestSecurityToken message. It is an optional element, and SHOULD be omitted if there is no extra information to be passed.

**wstep:RequestID:** An instance of **wstep:RequestID** as specified in section 3.1.4.1.2.4.

### 3.1.4.1.3.4 wst:RequestSecurityTokenResponseType

The wst:RequestSecurityTokenResponseType contains the elements that are part of a server response to a wst:RequestSecurityToken message. wst:RequestSecurityTokenResponseType is defined in the WS-Trust [WSTrust1.3] XML schema definition (XSD).

```

<xs:complexType name="RequestSecurityTokenResponseType">
  <xs:annotation>
    <xs:documentation>
      Actual content model is non-deterministic, hence wildcard. The following shows intended
      content model:
      <xs:element ref='wst:TokenType' minOccurs='0' />
      <xs:element ref='wst:RequestType' />
      <xs:element ref='wst:RequestedSecurityToken' minOccurs='0' />
      <xs:element ref='wsp:AppliesTo' minOccurs='0' />
      <xs:element ref='wst:RequestedAttachedReference' minOccurs='0' />
      <xs:element ref='wst:RequestedUnattachedReference' minOccurs='0' />
      <xs:element ref='wst:RequestedProofToken' minOccurs='0' />
      <xs:element ref='wst:Entropy' minOccurs='0' />
      <xs:element ref='wst:Lifetime' minOccurs='0' />
      <xs:element ref='wst:Status' minOccurs='0' />
      <xs:element ref='wst:AllowPostdating' minOccurs='0' />
      <xs:element ref='wst:Renewing' minOccurs='0' />
      <xs:element ref='wst:OnBehalfOf' minOccurs='0' />
      <xs:element ref='wst:Issuer' minOccurs='0' />
      <xs:element ref='wst:AuthenticationType' minOccurs='0' />
      <xs:element ref='wst:Authenticator' minOccurs='0' />
      <xs:element ref='wst:KeyType' minOccurs='0' />
      <xs:element ref='wst:KeySize' minOccurs='0' />
      <xs:element ref='wst:SignatureAlgorithm' minOccurs='0' />
      <xs:element ref='wst:Encryption' minOccurs='0' />
      <xs:element ref='wst:EncryptionAlgorithm' minOccurs='0' />
      <xs:element ref='wst:CanonicalizationAlgorithm' minOccurs='0' />
      <xs:element ref='wst:ProofEncryption' minOccurs='0' />
    
```

```

    <xs:element ref='wst:UseKey' minOccurs='0' />
    <xs:element ref='wst:SignWith' minOccurs='0' />
    <xs:element ref='wst:EncryptWith' minOccurs='0' />
    <xs:element ref='wst:DelegateTo' minOccurs='0' />
    <xs:element ref='wst:Forwardable' minOccurs='0' />
    <xs:element ref='wst:Delegatable' minOccurs='0' />
    <xs:element ref='wsp:Policy' minOccurs='0' />
    <xs:element ref='wsp:PolicyReference' minOccurs='0' />
    <xs:any namespace='##other' processContents='lax' minOccurs='0' maxOccurs='unbounded'
  />
</xs:documentation>
</xs:annotation>
<xs:sequence>
  <xs:any namespace="##any" processContents="lax" minOccurs="0" maxOccurs="unbounded" />
</xs:sequence>
<xs:attribute name="Context" type="xs:anyURI" use="optional" />
<xs:anyAttribute namespace="##other" processContents="lax" />
</xs:complexType>

```

WSTEP extends the `wst:RequestSecurityTokenResponseType` with the following elements:

```

  <xs:element ref="wstep:DispositionMessage" />
  <xs:element ref="wsse:BinarySecurityToken" minOccurs="0" maxOccurs="1" />
  <xs:element ref="wstep:RequestID" minOccurs="0" maxOccurs="1"
<xs:element ref="wst:KeyExchangeToken" minOccurs="0" maxOccurs="1" />
/>

```

Only the elements documented as follows are used by WSTEP. Any element received that is not documented as follows SHOULD be ignored.

**wst:TokenType:** Refers to the `TokenType` definition in section 3.1.4.1.2.8.

**wstep:DispositionMessage:** Refers to the definition in section 3.1.4.1.2.2. The `wstep:DispositionMessage` element is used to convey any additional server disposition information as part of the response message.

**wsse:BinarySecurityToken:** Refers to the `wsse:BinarySecurityToken` definition in section 3.1.4.1.3.2.

**wst: KeyExchangeToken:** Refers to the `wst:KeyExchangeToken` definition in section 3.1.4.1.2.3.

**wst:RequestedSecurityToken:** An instance of a `wst:RequestedSecurityTokenType` object as defined in section 3.1.4.1.3.2.

**wstep:RequestID:** An instance of a **wstep:RequestID** as defined in section 3.1.4.1.2.4 that conveys the request identifier of the originating request.

### 3.1.4.1.3.5 wst:RequestSecurityTokenResponseCollectionType

The `<wst:RequestSecurityTokenResponseCollectionType>` is defined in the [WSTrust1.3] XML schema definition (XSD) as a collection of one or more `<wst:RequestSecurityTokenResponse>` elements. The WS-Trust X.509v3 Token Enrollment Extensions further constrain the [WSTrust1.3] definition and the `<wst:RequestSecurityTokenResponseCollection>` collection MUST contain at most one `<wst:RequestSecurityTokenResponse>` element.

```

<xs:complexType name="RequestSecurityTokenResponseCollectionType">
  <xs:annotation>
    <xs:documentation>
      The <wst:RequestSecurityTokenResponseCollection> element (RSTRC) MUST be used to return a
      security token or response to a security token request on the final
      response.</xs:documentation>

```

```

</xs:annotation>
<xs:sequence>
<xs:element ref="wst:RequestSecurityTokenResponse" minOccurs="1" maxOccurs="unbounded" />
</xs:sequence>
<xs:anyAttribute namespace="##other" processContents="lax" />
</xs:complexType>

```

**wst:RequestSecurityTokenResponse:** An instance of a wst:RequestSecurityTokenResponseType object. The <wst:RequestSecurityTokenResponseCollectionType> MUST contain only one <RequestSecurityTokenResponse> element.

### 3.1.4.1.3.6 wst:RequestTypeEnum

The <wst:RequestTypeEnum> is defined in WS-Trust [WSTrust1.3] XML schema definition (XSD). WSTEP defines the following values for <wst:RequestTypeEnum>.

```
"http://schemas.microsoft.com/windows/pki/2009/01/enrollment/QueryTokenStatus"
```

WSTEP makes use of the Key Exchange Token request type defined in [WSTrust1.3] section 10:

```
"http://docs.oasis-open.org/ws-sx/ws-trust/200512/KET"
```

and the issue request type defined in [WSTrust1.3] XML schema definition (XSD):

```
"http://docs.oasis-open.org/ws-sx/ws-trust/200512/Issue"
```

### 3.1.4.1.3.7 wstep:CertificateEnrollmentWSDetailType

The <wstep:CertificateEnrollmentWSDetailType> contains additional information pertaining to error conditions.

```

<xs:complexType name="CertificateEnrollmentWSDetailType">
  <xs:sequence>
    <xs:element minOccurs="0" maxOccurs="1" name="BinaryResponse" nillable="true"
type="xs:string" />
    <xs:element minOccurs="0" maxOccurs="1" name="ErrorCode" nillable="true" type="xs:int"
/>
    <xs:element minOccurs="0" maxOccurs="1" name="InvalidRequest" nillable="true"
type="xs:boolean" />
    <xs:element minOccurs="0" maxOccurs="1" name="RequestID" type="xs:string"
nillable="true" />
  </xs:sequence>
</xs:complexType>

```

**wstep:BinaryResponse:** The wstep:BinaryResponse element is used to provide a response if the Issuer generates one. If there is no response to provide, the wstep:BinaryResponse element MUST be nil.

**wstep:ErrorCode:** An integer value representing a server error. If there is no error to provide, wstep:ErrorCode MUST be specified as nil.

**wstep:InvalidRequest:** If the request is denied by the Issuer the server MUST return true. For other errors the wstep:InvalidRequest SHOULD be false.

**wstep:RequestID:** If the Issuer provides a wstep:RequestID to the server, it MUST be provided to a client. If no wstep:RequestID is provided by the Issuer, the wstep:RequestID element must be specified as nil.

#### 3.1.4.1.4 Attributes

There are no attributes that are specific to this operation.

#### 3.1.4.2 Processing Rules

An incoming SOAP message MUST be processed to evaluate the SOAP actions and authentication information.

If the user is authenticated successfully using the provided authentication information, message processing MUST continue, and the authentication information SHOULD be provided to the Issuer. If the authentication fails, the server MUST respond with a SOAP fault.

If the SOAP action is "http://schemas.microsoft.com/windows/pki/2009/01/enrollment/RST/wstep" the server must follow the Request Security Token Processing Rules per section 3.1.4.2.1.

If the SOAP action is "http://docs.oasis-open.org/ws-sx/ws-trust/200512/RST/KET" the server must follow the Key Exchange Token Processing Rules per section 3.1.4.2.2.

If any other SOAP action is defined, the server SHOULD respond with a SOAP fault.

##### 3.1.4.2.1 WSTEP Action: Request Security Token Processing Rules

A <wst:RequestSecurityTokenMsg> MUST contain a <wst:RequestType> element as defined in section 3.1.4.1.2.7. If the <wst:RequestType> element is absent, nil, or undefined, the server MUST respond with a SOAP fault.

If a **wstep:PreferredLanguage** attribute is not present in a <RequestSecurityTokenType> object, or the value is not in SupportedLanguages, the server SHOULD use DefaultLanguage.

If the <wst:RequestType> is "http://docs.oasis-open.org/ws-sx/ws-trust/200512/Issue", the server MUST process the request per section 3.1.4.2.1.1.

If the <wst:RequestType> is "http://schemas.microsoft.com/windows/pki/2009/01/enrollment/QueryTokenStatus" the server MUST process the request per section 3.1.4.2.1.2.

If the <wst:RequestType> is any other value, the server MUST respond with a SOAP fault.

##### 3.1.4.2.1.1 New and Renewal Request Processing

A wst:RequestSecurityToken message with a wst:RequestType value of "http://docs.oasis-open.org/ws-sx/ws-trust/200512/Issue" is used for the purposes of issuing an X.509v3 certificate or for renewal of an existing X.509v3 certificate.

For this type of message, a server has additional syntax constraints on the request message.

**wsse:BinarySecurityToken:** If the wsse:BinarySecurityToken element is absent or undefined, the server MUST respond with a SOAP fault.

**wstep:RequestID:** If the **wstep:RequestID** element is present and defined, the server SHOULD ignore it.

The server MUST provide the **wsse:BinarySecurityToken** to the Issuer and SHOULD provide the **auth:AdditionalContext** (see section 3.1.4.1.3.3) to the Issuer.



If the Issuer responds with an error, the server MUST respond with a SOAP fault. If the Issuer indicates the issuance is pending, the server MUST use the Issuer response to generate a pending **wst:RequestSecurityTokenResponseCollectionMsg** message. If the Issuer responds with an issued certificate, the server MUST respond with a **wst:RequestSecurityTokenResponseCollectionMsg** message providing the issued certificate.

#### 3.1.4.2.1.2 QueryTokenStatus Request Processing

A **wst:RequestSecurityToken** message with a `<wst:RequestType>` of "http://schemas.microsoft.com/windows/pki/2009/01/enrollment/QueryTokenStatus" is used to retrieve an issued certificate or check the status of a certificate request that was pending.

For this type of message, the server has additional syntax constraints on the request message.

The **wstep:RequestID** element is a null-terminated Unicode string that contains a certificate request identifier (as defined in section 3.1.4.1.2.4). If the `<wstep:RequestID>` element is absent, defined as nil, or contains no value the server MUST return a SOAP fault.

The server MUST provide the **wstep:RequestID** to the Issuer.

If the Issuer responds with an error, the server MUST respond with a SOAP fault. If the Issuer indicates the issuance is pending, the server MUST use the Issuer response to generate a pending **wst:RequestSecurityTokenResponseCollectionMsg** message. If the Issuer responds with an issued certificate, the server MUST respond with a **wst:RequestSecurityTokenResponseCollectionMsg** message providing the issued certificate.

#### 3.1.4.2.2 KET Action: Request Security Token Processing Rules

A **wst:RequestSecurityTokenMsg** MUST contain a `<wst:RequestType>` element as defined in section 3.1.4.1.2.7. If the `<wst:RequestType>` element is absent, nil, or undefined, the server MUST respond with a SOAP fault.

If the `<wst:RequestType>` is "http://docs.oasis-open.org/ws-sx/ws-trust/200512/KET" the server MUST process the request per section 3.1.4.2.2.1.

If the `<wst:RequestType>` is any other value, the server MUST respond with a SOAP fault.

##### 3.1.4.2.2.1 Key Exchange Token Request Processing

A RequestSecurityToken message of `wst:RequestType` of "http://docs.oasis-open.org/ws-sx/ws-trust/200512/KET" is used to retrieve the Key Exchange Token.

For this type of message, a server has additional syntax constraints on the **wst:RequestSecurityTokenMsg** message.

If the `<wst:RequestKET>` element is absent, the server MUST return a SOAP fault.

The server requests the Key Exchange Token from the issuer. If the issuer responds with an error, the server MUST respond with a SOAP fault. Otherwise, the server uses the Issuer response to generate a **wst:RequestSecurityTokenResponseCollectionMsg** message.

The `<wst:RequestSecurityTokenResponse>` element in the server response follows the [WSTrust1.3] definition in section 8, but for key exchange in the WSTEP protocol, the `<wst:KeyExchangeToken>` element MUST be present, and provides the key exchange token provided from the Issuer.

#### 3.1.5 Timer Events

None.

### **3.1.6 Other Local Events**

None.

## 4 Protocol Examples

### 4.1 RequestSecurityToken Request/Response Message Sequence

In the following message sequence, the username/password authentication headers have been included in the message sequences for clarity.

#### 4.1.1 Standard Certificate Request

##### 4.1.1.1 RequestSecurityToken Message (Issue Request)

```
<s:Envelope xmlns:a="http://www.w3.org/2005/08/addressing"
xmlns:s="http://www.w3.org/2003/05/soap-envelope">
  <s:Header>
    <a:Action s:mustUnderstand="1">
http://schemas.microsoft.com/windows/pki/2009/01/enrollment/RST/wstep</a:Action>
    <a:MessageID>urn:uuid:b5d1a601-5091-4a7d-b34b-5204c18b5919</a:MessageID>
    <a:ReplyTo>
<a:Address>http://www.w3.org/2005/08/addressing/anonymous</a:Address>
</a:ReplyTo>
</s:Header>
  <s:Body xmlns:xsi="http://www.w3.org/2001/XMLSchema-instance"
xmlns:xsd="http://www.w3.org/2001/XMLSchema">
  <RequestSecurityToken xmlns="http://docs.oasis-open.org/ws-sx/ws-trust/200512">
  <TokenType>http://docs.oasis-open.org/wss/2004/01/oasis-200401-wss-x509-token-profile-
1.0#X509v3</TokenType>
  <RequestType>http://docs.oasis-open.org/ws-sx/ws-trust/200512/Issue</RequestType>
  <BinarySecurityToken EncodingType="http://docs.oasis-open.org/wss/2004/01/
oasis-200401-wss-wssecurity-secext-1.0.xsd#base64binary"
ValueType="http://docs.oasis-open.org/wss/2004/01/
oasis-200401-wss-wssecurity-secext-1.0.xsd#PKCS7"
xmlns="http://docs.oasis-open.org/wss/2004/01/oasis-200401-wss-wssecurity-secext-
1.0.xsd">MIIEDDCCAvQCAQAwADCCASIwDQYJKoZIhvcNAQEBBQADggEPADCCAQoCggEBANPk
/LA0EvYikbMjvabzapKyJkqLnaXWm2FvnO6UNcTXWf9WchbbumLqkIas9BUcMiSE
Eh4tVZNFUgi3bahnjUjTG9MIvAZd3/C0YfuLX8y19mcIVWZhyYZVwUeMh4GYS5ht
90NFZP0vXb7c0brSRyvhvWzq+kg7om24qMTZBgSIRsajcDVY+uGLdhixy4AtXNw5
pzzRdS/lQBf1wsDT3C0bceWy2uej2hsLYolyGdd0fHkly/tOusoyjc3itw2o3P9j
k+bP4eDG2ukRjMMcjxqQ500Bze7hXQf2hrNEJRTd6pPIOdAub8Hz/DiPYaEY75XN
EQepc1lLmq2GQ9YghcCAwEAAACCAcUwGgYKKwYBBAGCNw0CAzEMFgo2LjEuNzA1
My4yMGQGCSSGAQQBgjcVFDFXMFUCAQUMLzktMTM1MUMwNDA1QS5kOS0xMzUxQzA0
MDZBLm50dGVzdC5taWNyb3NvZnQuY29tDBJEOS0xMzUxQzA0MDZBXGFiYnkMCO1l
c1Rlc3QuZlMhMHQGCisGAQQBgjcNAgIxZjBkAgEBHlwATQBpAGMAcGvBvAHMAbwBm
AHQAIABFAG4AaABhAG4AYwBlAGQAIABDAAHIAeQBwAHQAAbwBnAHIAIYQBwAGGAAQBj
ACAAUABYAG8AdgBpAGQAZQBvACAAdgAxAC4AMAMBADCBYgYJKoZIhvcNAQkOMYG8
MIG5MbcGCSSGAQQBgjcUAQKKhggAVQBzAGUAcjApBgNVHSUEIjAgBgorBgEEAYI3
CgMEBggrBgEFBQcDBAYIKwYBBQUHAWIwDgYDVROPAQH/BAQDAgWgMEQGCSSqGSIb3
DQEJJDwQ3MDUwDgYIKoZIhvcNAwICAQCAMAA4GCCqGSIb3DQMEAgIAgDAHBGUrDgMC
BzAKBggqhkiG9w0DBzAdBgNVHQ4EFgQUavblZB2QWg6vt+ag4T4jZMPFe3owDQYJ
KoZIhvcNAQEFBQADggEBAGId8Dv9gvCVNgnSHkNuTiErtwIacv609MnMt2WxhnAj
zGQZS4b29JNH+CR49yswieFCS3zFiP5PxGL5CCogn2XHGs7LCCzHtrltAZBACTC
tzLF5Qcj0Ki/H5GRa4Q+ZelUrcMlcSnD52zY+V1vFXX1Xc2P5hTB0bq8GbZME/MW
84XE1sz75NqZeQ2vh066ozAMyMtC26Q+7DOfBaPMxXrWgMQBm6qO/Yjj3vDY/U8
T9rpJqGHHTG7E7E+/3EcgPeKNExxf0n+VXRwLO9C5wOS6Xy/JNGfuipw+SzarBPs
H5/6UiS+uqtSVzaJmA0a9vzxJQfgARCucr49wM3YUek=</BinarySecurityToken>
  <RequestID xsi:nil="true"
xmlns="http://schemas.microsoft.com/windows/pki/2009/01/enrollment" />
</RequestSecurityToken>
</s:Body>
</s:Envelope>
```



aWm1mJbLzXk1mJbTZXJ2aWn1cyxDTj1TZxJ2aWn1cyxDTj1Db25maWd1cmF0aW9u  
LERDPWQ5LTeZnTFdMDQwNkEsREM9bnR0ZXN0LERDPW1pY3Jvc29mdCxEQz1jb20/  
Y0FDZxJ0aWZpY2F0ZT9iYXNlP29iamVjdENsYXNzPWNlcnRpZmljYXRpb25BdXR0  
b3JpdHkwDQYJKoZIhvcNAQEFBQADggEBACUFJf5b34y2bob4+rmjcJ2F4MRRg8C3  
v91tkpai68neRyC2tNU0C+hav5QZ2DjW8Kwns+rRblUW/5iRa/7uKhNHYyS14Yv0  
I/LddTl1v5Pf5uV5CK0YbmqiGx37aLLHjDngerh346N+z75kZJ18eEVnUPZUQ/ZB  
btqb7GAKCIRViJJ+9rSpGRJoIFjFIAUI7jThssGlzobaLjyw4IvMX0+VpGpr8zxM  
ZfK0P4kr30u+TSVK1H0cBSFy4SgkcSdxVFkoyCEm7Pr4osxVHCfKc9JgiihY1di1  
xgt4U54nFAGUrTbHjB+JYjHLqQYafPGCYfB9bR4M1/1jhV05F1V61zIwggAOMIIF  
dqADAgECAgoY2dXTAAAAA9MA0GCSqGSIB3DQEERBBQUAMDMxGzAZBgNVBAsTEk1p  
Y3Jvc29mdCBQSOkgVGVhbTEUMBIGA1UEAwWLRkJfRW50U3ViQ0EwHhcNMDkwMzA1  
MTgyNTQ1WhcNMTAwMzA1MTgyNTQ1WjCBvjETMBEGCgmsJomT8ixkARkWA2NvbTEZ  
MBCGCGmsJomT8ixkARkWCW1pY3Jvc29mdDEWMBQGCgmsJomT8ixkARkWBm50dGVz  
dEdMBSGCGmsJomT8ixkARkWDWQ5LTeZnTFdMDQwNkEsREM9bnR0ZXN0LERDPW1pY3Jv  
c29mdCxEQz1jb20/Y0FDZxJ0aWZpY2F0ZT9iYXNlP29iamVjdENsYXNzPWNlcnRp  
ZmljYXRpb25BdXR0b3JpdHkwHQYDVUR0OBByEFGGr25WQdkFhur7fmoOE+I2TDxXt6  
MA4GA1UdHwEB/wQEAwIwDQgMBGgqhk1G9w0DBAICAIaWbYfKw4DAgCW  
CgYIKoZIhvcNAQcFwYJKwYBBAAGCnQCBAAoeCABVAHMAZQBYMIHaBgggrBgEFBQcB  
AQSBzTCByjCBxwYIKwYBBQUHMAKGGbbsZGFwOi8vL0NOPUZCX0VudFN1YknBLENO  
PUNEUcxDTj1QdWJsaWm1mJbLzXk1mJbTZXJ2aWn1cyxDTj1TZxJ2aWn1cyxDTj1D  
b25maWd1cmF0aW9uLERDPWQ5LTeZnTFdMDQwNkEsREM9bnR0ZXN0LERDPW1pY3Jv  
c29mdCxEQz1jb20/Y0FDZxJ0aWZpY2F0ZT9iYXNlP29iamVjdENsYXNzPWNlcnRp  
ZmljYXRpb25BdXR0b3JpdHkwHQYDVUR0OBByEFGGr25WQdkFhur7fmoOE+I2TDxXt6  
MA4GA1UdHwEB/wQEAwIwDQgMBGgqhk1G9w0DBAICAIaWbYfKw4DAgCW  
CgYIKoZIhvcNAQcFwYJKwYBBAAGCnQCBAAoeCABVAHMAZQBYMIHaBgggrBgEFBQcB  
AQSBzTCByjCBxwYIKwYBBQUHMAKGGbbsZGFwOi8vL0NOPUZCX0VudFN1YknBLENO  
PUNEUcxDTj1QdWJsaWm1mJbLzXk1mJbTZXJ2aWn1cyxDTj1TZxJ2aWn1cyxDTj1D  
b25maWd1cmF0aW9uLERDPWQ5LTeZnTFdMDQwNkEsREM9bnR0ZXN0LERDPW1pY3Jv  
c29mdCxEQz1jb20/Y2VydG1maWnhdGVsZXZvY2F0aW9uTG1zdD9iYXNlP29iamVj  
dENsYXNzPWNSTERpc3RyaWJ1dG1vblBvaW50MB8GA1UdIwQYMBaAFJ+3jZGC0QUd  
0DHI1PfaXeoF15vZIMCKGA1UdJQIcMAGCisGAQQBgjckAwQGCCsGAQUFBwMEEBggr  
BgEFBQcDAjANBgkqhkiG9w0BAQUFAAOCAQEAWLndycUwoaaIU8itsOhThdSiImen  
Izf4Gz4f0IcWkuc10RaHbeKDBp5e91x1z6My+4fbGn2o58vB05wRmfYa31HIngO/  
+C2W+9pOxsPGXSfR8qwfIYcPLou6aZC40G21TSkclpZvucqCOED2CPaHocW9f20F  
Z8OQYi+zFtNFY04B5TH2i9sCoOWivf4EsbamTLlBqTRdPLBJ2Vz+BB/nemTz1  
vd7ZBw89C9qebI6QVb8udRi2lx50LqQZUtJyiWpv/3zhpR6eL9DobsxIrhc4Np7r  
ft2hfopnHulZLhwFrk2GXGRZqBabDN06kCe1qV6X2gwlv6NbDRXc/OfFOTGAakw  
ggGlagEBMEIwNDEbMBkGA1UECXMSTW1jcm9zb2Z0IFBLSSBUZWFtMRUwEwYDVQQD  
DAXGQ19FbnR5b290Q0ECCmEMfNwAAAAAAIwCYfKw4DahoFAKA+MBCGCSqGSIB3  
DQEJAZeKBBgggrBgEFBQcMAzAjBgkqhkiG9w0BCQQxFgQUy/W4vpjAGswflv6yOirp  
M+kawzEwDQYJKoZIhvcNAQEFBQAEggEakQr0469R/EGRQaF4jdvLz/NGG+7WPnv8  
SKKS0h3U5ZwKUPHjCtLkfa7oJDgCMMaO26/VVN3nAwCiFtA3ZCc+FASd+5rmUtUq  
k25eeCTaBH/6NykUoddsyKrt1Gzvj+uavqQ0uNhQeZyWBjNgWlOQ09ENXcw4qe  
IO5oOF8T5Z2wACKunoY/xrvrWoPoS58TkSDGkd/BWq8R6ZzafdjAF26bGB7Hif5  
OMzCxn5Sd/AlLozG3F99/wnqijCxnsFPP6EYrVGs8gjDKfduaIb+cyw4X+wFZch2  
DMryOkIN+6YDN60SNpNHCmq+19P5IjX2aCk3EAyx3NWtf/BOu4KCw==</BinarySecurityToken>  
<RequestedSecurityToken>  
<BinarySecurityToken ValueType="http://docs.oasis-open.org/wss/2004/01/  
oasis-200401-wss-x509-token-profile-1.0#X509v3"  
EncodingType="http://docs.oasis-open.org/wss/2004/01/  
oasis-200401-wss-wssecurity-secext-1.0.xsd#base64binary"  
xmlns="http://docs.oasis-open.org/wss/2004/01/oasis-200401-wss-wssecurity-secext-  
1.0.xsd">MIIGjCCBxagAwIBAgIKGNnV0wAAAAAPTANBgkqhkiG9w0BAQUFADAzMRswGQYD  
VQQLEwJNaWm1mJbLzXk1mJbTZXJ2aWn1cyxDTj1TZxJ2aWn1cyxDTj1Db25maWd1cmF0aW9u  
LERDPWQ5LTeZnTFdMDQwNkEsREM9bnR0ZXN0LERDPW1pY3Jvc29mdCxEQz1jb20/Y0FDZxJ0aWZpY2F0ZT9iYXNlP29iamVjdENsYXNzPWNlcnRpZmljYXRpb25BdXR0b3JpdHkwDQYJKoZIhvcNAQEFBQADggEBACUFJf5b34y2bob4+rmjcJ2F4MRRg8C3v91tkpai68neRyC2tNU0C+hav5QZ2DjW8Kwns+rRblUW/5iRa/7uKhNHYyS14Yv0I/LddTl1v5Pf5uV5CK0YbmqiGx37aLLHjDngerh346N+z75kZJ18eEVnUPZUQ/ZBbtqb7GAKCIRViJJ+9rSpGRJoIFjFIAUI7jThssGlzobaLjyw4IvMX0+VpGpr8zxMZfK0P4kr30u+TSVK1H0cBSFy4SgkcSdxVFkoyCEm7Pr4osxVHCfKc9JgiihY1di1xgt4U54nFAGUrTbHjB+JYjHLqQYafPGCYfB9bR4M1/1jhV05F1V61zIwggAOMIIFdqADAgECAgoY2dXTAAAAA9MA0GCSqGSIB3DQEERBBQUAMDMxGzAZBgNVBAsTEk1pY3Jvc29mdCBQSOkgVGVhbTEUMBIGA1UEAwWLRkJfRW50U3ViQ0EwHhcNMDkwMzA1MTgyNTQ1WhcNMTAwMzA1MTgyNTQ1WjCBvjETMBEGCgmsJomT8ixkARkWA2NvbTEZMBCGCGmsJomT8ixkARkWCW1pY3Jvc29mdDEWMBQGCgmsJomT8ixkARkWBm50dGVzdEdMBSGCGmsJomT8ixkARkWDWQ5LTeZnTFdMDQwNkEsREM9bnR0ZXN0LERDPW1pY3Jvc29mdCxEQz1jb20/Y0FDZxJ0aWZpY2F0ZT9iYXNlP29iamVjdENsYXNzPWNlcnRpZmljYXRpb25BdXR0b3JpdHkwHQYDVUR0OBByEFGGr25WQdkFhur7fmoOE+I2TDxXt6MA4GA1UdHwEB/wQEAwIwDQgMBGgqhk1G9w0DBAICAIaWbYfKw4DAgCWCGYIKoZIhvcNAQcFwYJKwYBBAAGCnQCBAAoeCABVAHMAZQBYMIHaBgggrBgEFBQcBAQSBzTCByjCBxwYIKwYBBQUHMAKGGbbsZGFwOi8vL0NOPUZCX0VudFN1YknBLENOPUNEUcxDTj1QdWJsaWm1mJbLzXk1mJbTZXJ2aWn1cyxDTj1TZxJ2aWn1cyxDTj1Db25maWd1cmF0aW9uLERDPWQ5LTeZnTFdMDQwNkEsREM9bnR0ZXN0LERDPW1pY3Jvc29mdCxEQz1jb20/Y2VydG1maWnhdGVsZXZvY2F0aW9uTG1zdD9iYXNlP29iamVjdENsYXNzPWNSTERpc3RyaWJ1dG1vblBvaW50MB8GA1UdIwQYMBaAFJ+3jZGC0QUd0DHI1PfaXeoF15vZIMCKGA1UdJQIcMAGCisGAQQBgjckAwQGCCsGAQUFBwMEEBggrBgEFBQcDAjANBgkqhkiG9w0BAQUFAAOCAQEAWLndycUwoaaIU8itsOhThdSiImenIzf4Gz4f0IcWkuc10RaHbeKDBp5e91x1z6My+4fbGn2o58vB05wRmfYa31HIngO/+C2W+9pOxsPGXSfR8qwfIYcPLou6aZC40G21TSkclpZvucqCOED2CPaHocW9f20FZ8OQYi+zFtNFY04B5TH2i9sCoOWivf4EsbamTLlBqTRdPLBJ2Vz+BB/nemTz1vd7ZBw89C9qebI6QVb8udRi2lx50LqQZUtJyiWpv/3zhpR6eL9DobsxIrhc4Np7rft2hfopnHulZLhwFrk2GXGRZqBabDN06kCe1qV6X2gwlv6NbDRXc/OfFOTGAakwggGlagEBMEIwNDEbMBkGA1UECXMSTW1jcm9zb2Z0IFBLSSBUZWFtMRUwEwYDVQQDDAXGQ19FbnR5b290Q0ECCmEMfNwAAAAAAIwCYfKw4DahoFAKA+MBCGCSqGSIB3DQEJAZeKBBgggrBgEFBQcMAzAjBgkqhkiG9w0BCQQxFgQUy/W4vpjAGswflv6yOirpM+kawzEwDQYJKoZIhvcNAQEFBQAEggEakQr0469R/EGRQaF4jdvLz/NGG+7WPnv8SKKS0h3U5ZwKUPHjCtLkfa7oJDgCMMaO26/VVN3nAwCiFtA3ZCc+FASd+5rmUtUqk25eeCTaBH/6NykUoddsyKrt1Gzvj+uavqQ0uNhQeZyWBjNgWlOQ09ENXcw4qeIO5oOF8T5Z2wACKunoY/xrvrWoPoS58TkSDGkd/BWq8R6ZzafdjAF26bGB7Hif5OMzCxn5Sd/AlLozG3F99/wnqijCxnsFPP6EYrVGs8gjDKfduaIb+cyw4X+wFZch2DMryOkIN+6YDN60SNpNHCmq+19P5IjX2aCk3EAyx3NWtf/BOu4KCw==</BinarySecurityToken>  
<RequestedSecurityToken>

```
eTXL+066yjkNzeK3Dajc/2OT5s/h4Mba6RGMwxyOrFDnQ4HN7uFdB/aGs0QLFN3q
k8g50C5vwpP8OI9hoRjv1c0RB61zXWcuarYZD1iCFwIDAQABo4IDFjCCAxIwRAYJ
KoZIHvcNAQkPBDCwNTAObGgghkiG9w0DAGICAIwDgYIKoZIhvcNAwQCAGCAMACG
BSs0AwIHMAoGCCqGSIb3DQMHMBcGCCsGAQQBgjcUAQKHggAVQBzAGUAcjCB2gYI
KwYBBQUHAQEgc0wgcowgccGCCsGAQUFBzAChoG6bGRhcDovLy9DTj1GQl9FbnRT
dWJDQSxDtj1BSUESQ049UHVibG1jJTIwS2V5JTlWU2Vydm1jZXMsQ049U2Vydm1j
ZXMsQ049Q29uZmlndXJhdG1vbixEQz1kOS0xMzUxQzA0MDZBLERDPW50dGVzdCxE
Qz1taWNyb3NvZnQsREM9Y29tP2NBQ2VydG1maWNhdGU/YmFzZT9vYmplY3RDdGFz
cz1jZXJ0aWZpY2F0aW9uQXV0aG9yaXR5MB0GAlUdDgQWBRRq9uVkhZBYbq+35qDh
PiNkw8V7ejAObGNVHQ8BAf8EBAMCBaAwawYDVR0RBGQwYqA3BgorBgEEAYI3FAID
oCkMJ2FiYn1AZDktMTM1MUMwNDA2QS5udHRlc3QubW1jcm9zb2Z0LmNvbYEnYWJi
eUBEOS0xMzUxQzA0MDZBLk5UVEVTVCS5NSUNST1NPR1QuQ09NMIHrBgNVHR8EgeMw
geAwgd2ggdggdeGgdRrsZGFwOi8vL0NOPUZCX0VudFN1YknBLENOPTktMTM1MUMw
NDA3QSxDtj1DRFASQ049UHVibG1jJTIwS2V5JTlWU2Vydm1jZXMsQ049U2Vydm1j
ZXMsQ049Q29uZmlndXJhdG1vbixEQz1kOS0xMzUxQzA0MDZBLERDPW50dGVzdCxE
Qz1taWNyb3NvZnQsREM9Y29tP2N1cnRpZmljYXR1UmV2b2NhdG1vbixkxpc3Q/YmFz
ZT9vYmplY3RDdGFzcz1jUkxEaXN0cmliXRPb25Qb2ludDAfBgNVHSMEGDAWgBSf
t42RgtEFHdAx4j3213qBdeVcyDApBgNVHSUEIjAgBgorBgEEAYI3CgMEBggrBgEF
BQcDBAYIKwYBBQUHAwIwDQYJKoZIhvcNAQEFBQADggEBAMC53cnFMKGmiFPiRbDo
U4XUoiJnpyM3+Bs+HzihMCRnJdEWh23igwaeXvZcdWejMvuH2xp9qOfLwdOcETH2
Gt9RyJ4Dv/gt1vvaTsbDx10n0fKsH4mAqS6LummQuNBttU0pHJaWb7gqnDhA9gj2
h6HFvX9jhWfDKMovsxbTRWNOAeUx9ovbMgqDl0rxeBLG2pkyy26k0XTywsdlc/gQ
f58E3pmc9b3e2QcPPQvanmyOkFW/LnUYtpceTi6kGVLScolqb/984aUeni/Q6G7M
SK4XODae637doX6KZx7pWS4cBUZnhlXkWagWmwzDpAntale19oMjB+jWw0V3Pzn
xTk=</BinarySecurityToken>
</RequestedSecurityToken>
<RequestID
xmlns="http://schemas.microsoft.com/windows/pki/2009/01/enrollment">61</RequestID>
</RequestSecurityTokenResponse>
</RequestSecurityTokenResponseCollection>
</s:Body>
</s:Envelope>
```

## 4.1.2 Key Exchange Token Request

### 4.1.2.1 Client Exchange Token Request

```
<s:Envelope xmlns:a="http://www.w3.org/2005/08/addressing"
xmlns:s="http://www.w3.org/2003/05/soap-envelope">
  <s:Header>
    <a:Action s:mustUnderstand="1">
http://docs.oasis-open.org/ws-sx/ws-trust/200512/RST/KET</a:Action>
    <a:MessageID>urn:uuid:c2884a79-b943-45c6-ac02-7256071de309</a:MessageID>
    <a:ReplyTo>
    <a:Address>http://www.w3.org/2005/08/addressing/anonymous</a:Address>
    </a:ReplyTo>
    </s:Header>
  <s:Body xmlns:xsi="http://www.w3.org/2001/XMLSchema-instance"
xmlns:xsd="http://www.w3.org/2001/XMLSchema">
    <RequestSecurityToken xmlns="http://docs.oasis-open.org/ws-sx/ws-trust/200512">
    <TokenType>http://docs.oasis-open.org/wss/2004/01/oasis-200401-wss-x509-token-profile-
1.0#X509v3</TokenType>
    <RequestType>http://docs.oasis-open.org/ws-sx/ws-trust/200512/KET</RequestType>
    <RequestKET />
    <RequestID xsi:nil="true"
xmlns="http://schemas.microsoft.com/windows/pki/2009/01/enrollment" />
    </RequestSecurityToken>
  </s:Body>
</s:Envelope>
```



## 4.1.3 Retrieval of a previously pended certificate request with Query Token Status

### 4.1.3.1 Client Request

```
<s:Envelope xmlns:a="http://www.w3.org/2005/08/addressing"
xmlns:s="http://www.w3.org/2003/05/soap-envelope">
  <s:Header>
    <a:Action s:mustUnderstand="1">
http://schemas.microsoft.com/windows/pki/2009/01/enrollment/RST/wstep</a:Action>
    <a:MessageID>urn:uuid:ce330bb2-0ca2-473b-a29a-19e9264666ff</a:MessageID>
    <a:ReplyTo>
    <a:Address>http://www.w3.org/2005/08/addressing/anonymous</a:Address>
    </a:ReplyTo>
  </s:Header>
  <s:Body xmlns:xsi="http://www.w3.org/2001/XMLSchema-instance"
xmlns:xsd="http://www.w3.org/2001/XMLSchema">
    <RequestSecurityToken xmlns="http://docs.oasis-open.org/ws-sx/ws-trust/200512">
    <TokenType>http://docs.oasis-open.org/wss/2004/01/oasis-200401-wss-x509-token-profile-
1.0#X509v3</TokenType>

<RequestType>http://schemas.microsoft.com/windows/pki/2009/01/enrollment/QueryTokenStatus</Re
questType>
    <RequestID
xmlns="http://schemas.microsoft.com/windows/pki/2009/01/enrollment">65</RequestID>
    </RequestSecurityToken>
  </s:Body>
</s:Envelope>
```

## 4.1.4 Message exchange with a server fault

### 4.1.4.1 Client Request

See section 4.1.1.1 for an example of a client request.

### 4.1.4.2 Server Fault Response

```
<s:Envelope xmlns:s="http://www.w3.org/2003/05/soap-envelope"
xmlns:a="http://www.w3.org/2005/08/addressing">
  <s:Header>
    <a:Action s:mustUnderstand="1">http://schemas.microsoft.com/net/2005/12/
windowscommunicationfoundation/dispatcher/fault</a:Action>
    <a:RelatesTo>urn:uuid:ce330bb2-0ca2-473b-a29a-19e9264666ff</a:RelatesTo>
    <ActivityId CorrelationId="4f0e4425-4883-41c1-b704-771135d18f84"
xmlns="http://schemas.microsoft.com/2004/09/ServiceModel/Diagnostics">
eda7e63d-0c42-455d-9c4f-47ab85803a50</ActivityId>
  </s:Header>
  <s:Body>
    <s:Fault>
    <s:Code>
    <s:Value>s:Receiver</s:Value>
    <s:Subcode>
    <s:Value xmlns:a="http://schemas.microsoft.com/net/2005/12/windowscommunicationfoundation/
dispatcher">a:InternalServiceFault</s:Value>
    </s:Subcode>
    </s:Code>
    <s:Reason>
    <s:Text xml:lang="en-US">The server was unable to process the request
due to an internal error. For more information about the error, either turn
on IncludeExceptionDetailInFaults (either from ServiceBehaviorAttribute or
from the <lt;<serviceDebug>&gt; configuration behavior) on the server in order to
```



```
send the exception information back to the client, or turn on tracing as per
the Microsoft .NET Framework 3.0 SDK documentation and inspect the server
trace logs.</s:Text>
</s:Reason>
</s:Fault>
</s:Body>
</s:Envelope>
```

## 4.1.5 Certificate Renewal

### 4.1.5.1 Client Renewal Request

```
<s:Envelope xmlns:a="http://www.w3.org/2005/08/addressing"
xmlns:s="http://www.w3.org/2003/05/soap-envelope">
  <s:Header>
    <a:Action s:mustUnderstand="1">http://schemas.microsoft.com/windows/pki/2009/
01/enrollment/RST/wstep</a:Action>
    <a:MessageID>urn:uuid:b0a9b388-2581-451d-8c03-270d4ffe2928</a:MessageID>
    <a:ReplyTo>
      <a:Address>http://www.w3.org/2005/08/addressing/anonymous</a:Address>
    </a:ReplyTo>
  </s:Header>
  <s:Body xmlns:xsi="http://www.w3.org/2001/XMLSchema-instance"
xmlns:xsd="http://www.w3.org/2001/XMLSchema">
    <RequestSecurityToken xmlns="http://docs.oasis-open.org/ws-sx/ws-trust/200512">
      <TokenType>http://docs.oasis-open.org/wss/2004/01/
oasis-200401-wss-x509-token-profile-1.0#X509v3</TokenType>
      <RequestType>http://docs.oasis-open.org/ws-sx/ws-trust/200512/Issue</RequestType>
      <BinarySecurityToken EncodingType="http://docs.oasis-open.org/wss/2004/01/
oasis-200401-wss-wssecurity-secext-1.0.xsd#base64binary"
ValueType="http://docs.oasis-open.org/wss/2004/01/
oasis-200401-wss-wssecurity-secext-1.0.xsd#PKCS7"
xmlns="http://docs.oasis-open.org/wss/2004/01/
oasis-200401-wss-wssecurity-secext-1.0.xsd">
MIUIIAYJKoZiHvcNAQcCoIIUETCCFA0CAQExCzAJBgUrDgMCGGUAMIIL9wYJKoZI
hvcNAQcBoIIL6ASCC-QwggvGMI IKyAIBADCBvjETMBEGCgmsJomT8ixkARKWA2Nv
bTEZMBCGcGmsJomT8ixkARKWCW1pY3Jvc29mdDEWMBQGCGmsJomT8ixkARKWBM50
dGVzdDEdMBSGCGmsJomT8ixkARKWDWQ5LTEzNTFDMDQwNkExDjAMBgNVBAMTBVVz
ZXJzMQ0wCwYDVQQDEwRhYmJjYjY3MTYwNAZJKoZiHvcNAQcBFidhYmJ5QE05LTEzNTFD
MDQwNkEuTlRURVNUlk1JQ1JPU09GVC5DT00wggEiMA0GCSqGSIb3DQEBAQUAA4IB
DwAwggEKAoIBAQQD7WYEmBjrr1iF0S4zEY2JZG7yTThp8cXI50LdYS0bwXJLZWJ3
fmTD646zr/oCeGKi0ogMJO7JUeMgb0F70fqmJH7GaXe6i+QGPY7DaYYCtn94wPZQ
QGK6Mrnr1jPQyUU/1IOVQxukjZnzT11y9E/XfPQqTm6p3F6GksLe0kT0MIq0xqX
Vl8lHh5mzR7ddrZ4YUjyQf200n1qNe233vHmiJbLTRLWFn4a+onBSFAUINtYJXqu
NdDgza8eyNWeleJlJzXWbGtGjPhXrjL8wqpxOCS1VgOvdDEDU3mCoCaOLw4i5pU
RRnj6RN8VemOIVQSB/XR7si3Xfi5wauKNC6rAgMBAAGgggjaMBoGCisGAQQBgjcN
AgMxDBYKNI4xLjcwNTMuMjBkBgkrBgEEAYI3FRQxVzBVAgEFDc85LTEzNTFDMDQw
NUEuZDktMTM1MUMwNDA2QS5udHRLc3QubWljcm9zb2Z0LmNvbQwSRDktMTM1MUMw
NDA2QVxhYmJ5J5DAtDZXNUZXN0LmV4ZTB0BgorBgEEAYI3DQICMwYwZAIAR5cAE0A
aQBJAHIAbwBzAG8AZgB0ACAARQBuaGgAYQBuaGMAZQBkACAQwByAHkAcAB0AG8A
ZwByAGEAcAB0AGkAYwAgAFAAcgBvAHYAaQBkAGUAcgAgAHYAMQAuADADAQAwwgE5
BgkqhkiG9w0BCQ4xggEgMIIBJjBEBGkqhkiG9w0BCQENzA1MA4GCCqGSIb3DQMC
AgIAgDAOBggqhkiG9w0DBAICAIawBwYFKw4DAgcwCgYIKoZIhvcNAQcwwYDVR0R
BGQwYqA3BgorBgEEAYI3FAIDoCkMJ2FiYnlaZDktMTM1MUMwNDA2QS5udHRLc3Qu
bWljcm9zb2Z0LmNvbYEnYwJieUBEOS0xMzUxQzA0MDZBLk5UVEVTVVC5NSUNST1NP
RlQuQ09NMBcGCSSGAQQBgjcUAgQKHggAVQBzAGUAcjApBgNVHSUEIjAgBgorBgEE
AYI3CgMEBggrBgEFBQcDBAYIKwYBBQUHAWIwDgYDVR0PAQH/BAQDAgWgMB0GA1Ud
dGQWB2ht3VgSMOvE7763YZRfhPYEZ0zCCBqEGCSsGAQQBgjcNATGCBpIwggA0
MIIFdQADAgECAgY2d8GAAAAA+MA0GCSqGSIb3DQEBBQUAMDMxGzAZBgNVBAst
Ek1pY3Jvc29mdCBQSQ0kgVGVhbTEUMBIGA1UEAwLRkYjERW50U3ViQ0EwHhcnMDkw
MzA1MTgyNjE3W3hcnMTA1MTgyNjE3W3JvY3Jvc29mdDEWMBQGCGmsJomT8ixkARKWA2Nv
bTEZMBCGcGmsJomT8ixkARKWCW1pY3Jvc29mdDEWMBQGCGmsJomT8ixkARKWBM50
dGVzdDEdMBSGCGmsJomT8ixkARKWDWQ5LTEzNTFDMDQwNkExDjAMBgNVBAMTBVVz
ZXJzMQ0wCwYDVQQDEwRhYmJjYjY3MTYwNAZJKoZiHvcNAQcBFidhYmJ5QE05LTEzNTFD
MDQwNkEuTlRURVNUlk1JQ1JPU09GVC5DT00wggEiMA0GCSqGSIb3DQEBAQUAA4IB
```

DwAwggEKAoIBAQCUIUFleKRjXgChj0u0lmiL+GqluG85wgfz2th+w0jM+BA+lKL  
e57dbCc+FqzpzqJruPgGDSAFMP4o6Kk8roM/4kPEVJSYIBidnC3hRx2txSR7HrcS  
Lo8/xhnxWY7m8WjpcFro2mBV/JbOnTT5KFU0Z+YSSCGzEVahJqN2Wj1l3VBZ8YC  
J3BEUWY1UDYp33zDnPAMULKDPUPJlMXUmlX+pUL4vycfnmlon4iGw0kHHCqfM77L  
NPyJfkdZSgeTFRd2qSPDFUeOurwoS8whyFvPe2LFT5BRcAoF4dIaRK5DYSCP8yv1  
xQ+6z/yqD+tZ9WpR0TC7gFi1xeHPrU3TpBq5AgMBAAGjggMwMIIDEjBEBgkqhkiG  
9w0BCQ8ENzA1MA4GCCqGSIB3DQMCAGIAgDAOBggqhk1G9w0DBAICAIAwBwYFKw4D  
AgcwCgYIKoZIhvcNAwcwFwYJKwYBAGCNxQCBaoeCABVAHMAZQBByMIHaBggrBgEF  
BQcBAQSBzTCByjCBxwYIKwYBBQUHMAKGbbsZGFwOi8vLONOPUZCX0VudFN1YkNB  
LENOPUFJQSxDtj1QdWJsaWMLMjBLZXXk1MjBTZXJ2aWN1cyxDtj1TZXXJ2aWN1cyxD  
Tj1Db25maWdlcmF0aW9uLERDPWQ5LTEzNTFDMDQwNkEsREM9bnR0ZXN0LERDPW1p  
Y3Jvc29mdCxEQz1jb20/Y0FDZXJ0aWZpY2F0ZT9iYXNlP29iamVjdENsYXNzPWN1  
cnRpb25ldXRob3JpdHkwHQYDVR0OBBYEFaIBMzPGoRkGpoPN1ZHy7InY1lG+MA4G  
AlUdDwEB/wQEAWIfoDBrBgNVHREEZDBioDcGCisGAQQBgjcuUAGOGKQwnYWJieUBk  
OS0xMzUxQzA0MDZBLm50dGVzdC5taWNyb3NvZnQuY29tgSdhYmJ5QE05LTEzNTFD  
MDQwNkEuTlRURVNUk1JQ1JPU09GVC5DT00wgesGA1UdHwSB4zCB4DCB3aCB2qCB  
14aB1GxkYXA6Ly8vQ049RkJFRW50U3ViQ0EsQ049OS0xMzUxQzA0MDdBLENOPUNE  
UCxDTj1QdWJsaWMLMjBLZXXk1MjBTZXJ2aWN1cyxDtj1TZXXJ2aWN1cyxDtj1Db25  
maWdlcmF0aW9uLERDPWQ5LTEzNTFDMDQwNkEsREM9bnR0ZXN0LERDPW1pY3Jvc29  
mdCxEQz1jb20/Y2VydGlmawNhdGVsZXZvY2F0aW9uTG1zdD9iYXNlP29iamVjdENs  
YXNzPWNSTERpc3RyaWJldG1vblBvaW50MB8GA1UdIwQYMBaAFJ+3jZGC0QUd0DHi  
PfaXeoF15VzIMCGA1UdJQJiMCAgCisGAQQBgjckAwQGCCsGAQUFBwMEBggrBgEFBQcD  
AjANBgkqhkiG9w0BAQUFAAOCAQEAge5W3XJ3766qGf8Y+r2Yu1GmQ0cSkpa7tqeZ  
XwZW51skiv6i0S1NPo67HNp08+UFlYRpdghF+ZwtPnhCdTPieAvN0Hmd1LvO+LxT  
GA16oVCixa3qRG1x2NUQLH7VzH34ugf/YEaJDPJ/9818TJhQQ7iPTi3jl9e52rYm  
NLb450egdmVjhKJIftpcQqbWZY7HP3tziZf50dXhhzg3CGkOJIWqSQPQRKnUkvx  
CjvFIIovrvNM3IlUGDjIu9Ejj1gE1ZSqa4Lixjko2M/hzhWpejKnVAEV9eb+ppWh  
25jblEevk6WrYMgnwPgS9gRBB150q01ahPi6Vj5EOfxOe99KGTANBgkqhkiG9w0B  
AQUFAAOCAQEAL89mJFAUL4Bi2e/8KvIXY6r8CLEsXVVU5NNv16r4wPdkWeuGNtecl  
vyufhxr3jNAEVwaechKQcIGKNz5cYd6fBE4LDPp+fiI4YwblbPUgJvZvQpJV5j2+d  
Sux5TiJQYYeX1qrQfG3ioz7m7WSOvoFlmBomGpfUmH2MMdsVSjxFvJ7DShQe0Jom  
RKc5G1Xp7o5/W5Xi6bn4T0RTIGd6vtsbVata1DJ/jaisGurlv8yqedfAJIE62BbbEWO  
vIoa6wqdhCLLUXilPv3eZy5SsyZdDBwkbJsVfEhr0yivq6q0ErE0fcdm/WBqWfUg  
JwIUF9Dte7vykt7n043VZYQLTAcCBPwgggaOMIIFdQADAgECAGoY2d8GAAAAA+MA  
0GCSqGSIB3DQEBBQUAMDMxGzAZBgNVBAsTEk1pY3Jvc29mdCBQ50kgVGVhbnTEUM  
BIGA1UEAwLRk1FRW50U3ViQ0EwHhcNM2k1MzUxQzA0MDdBLENOPUNEUCxDTj1QdW  
JsaWMLMjBLZXXk1MjBTZXJ2aWN1cyxDtj1TZXXJ2aWN1cyxDtj1Db25maWdlcmF0  
aW9uLERDPWQ5LTEzNTFDMDQwNkEsREM9bnR0ZXN0LERDPW1pY3Jvc29mdCxEQz1  
jb20/Y0FDZXJ0aWZpY2F0ZT9iYXNlP29iamVjdENsYXNzPWN1cnRpb25ldXRob3Jp  
dHkwHQYDVR0OBBYEFaIBMzPGoRkGpoPN1ZHy7InY1lG+MA4GAlUdDwEB/wQEAWIfo  
DBrBgNVHREEZDBioDcGCisGAQQBgjcuUAGOGKQwnYWJieUBkOS0xMzUxQzA0MDZBL  
m50dGVzdC5taWNyb3NvZnQuY29tgSdhYmJ5QE05LTEzNTFDMDQwNkEuTlRURVNUk1  
JQ1JPU09GVC5DT00wggEiMA0GCSqGSIB3DQEBQUAA4IBDwAwggEK AoIBAQCUIUFleKR  
jXgChj0u0lmiL+GqluG85wgfz2th+w0jM+BA+lKLe57dbCc+FqzpzqJruPgGDSAFMP  
4o6Kk8roM/4kPEVJSYIBidnC3hRx2txSR7HrcSLo8/xhnxWY7m8WjpcFro2mBV/Jb  
OnTT5KFU0Z+YSSCGzEVahJqN2Wj1l3VBZ8YCJ3BEUWY1UDYp33zDnPAMULKDPUPJl  
MXUmlX+pUL4vycfnmlon4iGw0kHHCqfM77LNPYJfkdZSgeTFRd2qSPDFUeOurwoS  
8whyFvPe2LFT5BRcAoF4dIaRK5DYSCP8yv1xQ+6z/yqD+tZ9WpR0TC7gFi1xeHPrU  
3TpBq5AgMBAAGjggMwMIIDEjBEBgkqhkiG9w0BCQ8ENzA1MA4GCCqGSIB3DQMCAG  
IAgDAOBggqhk1G9w0DBAICAIAwBwYFKw4DAgcwCgYIKoZIhvcNAwcwFwYJKwYBAGCN  
xQCBaoeCABVAHMAZQBByMIHaBggrBgEFBQcBAQSBzTCByjCBxwYIKwYBBQUHMAK  
GbbsZGFwOi8vLONOPUZCX0VudFN1YkNBLENOPUFJQSxDtj1QdWJsaWMLMjBLZXXk1  
MjBTZXJ2aWN1cyxDtj1TZXXJ2aWN1cyxDtj1Db25maWdlcmF0aW9uLERDPWQ5LTEz  
NTFDMDQwNkEsREM9bnR0ZXN0LERDPW1pY3Jvc29mdCxEQz1jb20/Y0FDZXJ0aWZp  
Y2F0ZT9iYXNlP29iamVjdENsYXNzPWN1cnRpb25ldXRob3JpdHkwHQYDVR0OBBYEF  
aIBMzPGoRkGpoPN1ZHy7InY1lG+MA4GAlUdDwEB/wQEAWIfoDBrBgNVHREEZDBioDc  
GCisGAQQBgjcuUAGOGKQwnYWJieUBkOS0xMzUxQzA0MDZBLm50dGVzdC5taWNyb3  
NvZnQuY29tgSdhYmJ5QE05LTEzNTFDMDQwNkEuTlRURVNUk1JQ1JPU09GVC5DT00  
wgesGA1UdHwSB4zCB4DCB3aCB2qCB14aB1GxkYXA6Ly8vQ049RkJFRW50U3ViQ0Es  
Q049OS0xMzUxQzA0MDdBLENOPUNEUCxDTj1QdWJsaWMLMjBLZXXk1MjBTZXJ2aWN1  
cyxDtj1TZXXJ2aWN1cyxDtj1Db25maWdlcmF0aW9uLERDPWQ5LTEzNTFDMDQwNkEs  
REM9bnR0ZXN0LERDPW1pY3Jvc29mdCxEQz1jb20/Y2VydGlmawNhdGVsZXZvY2F0  
aW9uTG1zdD9iYXNlP29iamVjdENsYXNzPWNSTERpc3RyaWJldG1vblBvaW50MB8GA  
1UdIwQYMBaAFJ+3jZGC0QUd0DHiPfaXeoF15VzIMCGA1UdJQJiMCAgCisGAQQBgjck  
AwQGCCsGAQUFBwMEBggrBgEFBQcDAjANBgkqhkiG9w0BAQUFAAOCAQEAge5W3XJ376  
6qGf8Y+r2Yu1GmQ0cSkpa7tqeZXwZW51skiv6i0S1NPo67HNp08+UFlYRpdghF+Z  
wtPnhCdTPieAvN0Hmd1LvO+LxTGA16oVCixa3qRG1x2NUQLH7VzH34ugf/YEaJDPJ/  
9818TJhQQ7iPTi3jl9e52rYmNLb450egdmVjhKJIftpcQqbWZY7HP3tziZf50dXhhz  
g3CGkOJIWqSQPQRKnUkvxCjvFIIovrvNM3IlUGDjIu9Ejj1gE1ZSqa4Lixjko2M/h  
zhWpejKnVAEV9eb+ppWh25jblEevk6WrYMgnwPgS9gRBB150q01ahPi6Vj5EOfxOe  
99KGTANBgkqhkiG9w0BAQUFAAOCAQEAL89mJFAUL4Bi2e/8KvIXY6r8CLEsXVVU5NN  
v16r4wPdkWeuGNteclvyufhxr3jNAEVwaechKQcIGKNz5cYd6fBE4LDPp+fiI4Ywbl  
bPUgJvZvQpJV5j2+dSux5TiJQYYeX1qrQfG3ioz7m7WSOvoFlmBomGpfUmH2MMds  
VSjxFvJ7DShQe0JomRKc5G1Xp7o5/W5Xi6bn4T0RTIGd6vtsbVata1DJ/jaisGurlv8  
yqedfAJIE62BbbEWOvIoa6wqdhCLLUXilPv3eZy5SsyZdDBwkbJsVfEhr0yivq6q0  
ErE0fcdm/WBqWfUgJwIUF9Dte7vykt7n043VZYQLTAcCBPwgggaOMIIFdQADAgECAG  
oY2d8GAAAAA+MA0GCSqGSIB3DQEBBQUAMDMxGzAZBgNVBAsTEk1pY3Jvc29mdCBQ5  
0kgVGVhbnTEUMBIGA1UEAwLRk1FRW50U3ViQ0EwHhcNM2k1MzUxQzA0MDdBLENOPUN  
EUCxDTj1QdWJsaWMLMjBLZXXk1MjBTZXJ2aWN1cyxDtj1TZXXJ2aWN1cyxDtj1Db25  
maWdlcmF0aW9uLERDPWQ5LTEzNTFDMDQwNkEsREM9bnR0ZXN0LERDPW1pY3Jvc29m  
dCxEQz1jb20/Y2VydGlmawNhdGVsZXZvY2F0aW9uTG1zdD9iYXNlP29iamVjdENsY  
XNzPWNSTERpc3RyaWJldG1vblBvaW50MB8GA1UdIwQYMBaAFJ+3jZGC0QUd0DHiPfa  
XeoF15VzIMCGA1UdJQJiMCAgCisGAQQBgjckAwQGCCsGAQUFBwMEBggrBgEFBQcDAj  
ANBgkqhkiG9w0BAQUFAAOCAQEAge5W3XJ3766qGf8Y+r2Yu1GmQ0cSkpa7tqeZXw  
ZW51skiv6i0S1NPo67HNp08+UFlYRpdghF+ZwtPnhCdTPieAvN0Hmd1LvO+LxTGA1  
6oVCixa3qRG1x2NUQLH7VzH34ugf/YEaJDPJ/9818TJhQQ7iPTi3jl9e52rYmNLb4  
50egdmVjhKJIftpcQqbWZY7HP3tziZf50dXhhzg3CGkOJIWqSQPQRKnUkvxCjvFII  
ovrvNM3IlUGDjIu9Ejj1gE1ZSqa4Lixjko2M/hzhWpejKnVAEV9eb+ppWh25jblEev  
k6WrYMgnwPgS9gRBB150q01ahPi6Vj5EOfxOe99KGTANBgkqhkiG9w0BAQUFAAOCA  
QEAL89mJFAUL4Bi2e/8KvIXY6r8CLEsXVVU5NNv16r4wPdkWeuGNteclvyufhxr3j  
NAEVwaechKQcIGKNz5cYd6fBE4LDPp+fiI4YwblbPUgJvZvQpJV5j2+dSux5TiJQY  
YeX1qrQfG3ioz7m7WSOvoFlmBomGpfUmH2MMdsVSjxFvJ7DShQe0JomRKc5G1Xp7  
o5/W5Xi6bn4T0RTIGd6vtsbVata1DJ/jaisGurlv8yqedfAJIE62BbbEWOvIoa6wqdh  
CLLUXilPv3eZy5SsyZdDBwkbJsVfEhr0yivq6q0ErE0fcdm/WBqWfUgJwIUF9Dte7  
vykt7n043VZYQLTAcCBPwgggaOMIIFdQADAgECAGoY2d8GAAAAA+MA0GCSqGSIB3D  
QEBBQUAMDMxGzAZBgNVBAsTEk1pY3Jvc29mdCBQ50kgVGVhbnTEUMBIGA1UEAwLRk1  
FRW50U3ViQ0EwHhcNM2k1MzUxQzA0MDdBLENOPUNEUCxDTj1QdWJsaWMLMjBLZXXk1  
MjBTZXJ2aWN1cyxDtj1TZXXJ2aWN1cyxDtj1Db25maWdlcmF0aW9uLERDPWQ5LTEz  
NTFDMDQwNkEsREM9bnR0ZXN0LERDPW1pY3Jvc29mdCxEQz1jb20/Y2VydGlmawNhd  
GVsZXZvY2F0aW9uTG1zdD9iYXNlP29iamVjdENsYXNzPWNSTERpc3RyaWJldG1vbl  
BvaW50MB8GA1UdIwQYMBaAFJ+3jZGC0QUd0DHiPfaXeoF15VzIMCGA1UdJQJiMCAg  
CisGAQQBgjckAwQGCCsGAQUFBwMEBggrBgEFBQcDAjANBgkqhkiG9w0BAQUFAAOCAQ  
EAge5W3XJ3766qGf8Y+r2Yu1GmQ0cSkpa7tqeZXwZW51skiv6i0S1NPo67HNp08+U  
FlYRpdghF+ZwtPnhCdTPieAvN0Hmd1LvO+LxTGA16oVCixa3qRG1x2NUQLH7VzH34  
ugf/YEaJDPJ/9818TJhQQ7iPTi3jl9e52rYmNLb450egdmVjhKJIftpcQqbWZY7HP3  
tziZf50dXhhzg3CGkOJIWqSQPQRKnUkvxCjvFIIovrvNM3IlUGDjIu9Ejj1gE1ZSqa  
4Lixjko2M/hzhWpejKnVAEV9eb+ppWh25jblEevk6WrYMgnwPgS9gRBB150q01ahPi  
6Vj5EOfxOe99KGTANBgkqhkiG9w0BAQUFAAOCAQEAL89mJFAUL4Bi2e/8KvIXY6r8C  
LEsXVVU5NNv16r4wPdkWeuGNteclvyufhxr3jNAEVwaechKQcIGKNz5cYd6fBE4LDP  
p+fiI4YwblbPUgJvZvQpJV5j2+dSux5TiJQYYeX1qrQfG3ioz7m7WSOvoFlmBomGpf  
UmH2MMdsVSjxFvJ7DShQe0JomRKc5G1Xp7o5/W5Xi6bn4T0RTIGd6vtsbVata1DJ/j  
aisGurlv8yqedfAJIE62BbbEWOvIoa6wqdhCLLUXilPv3eZy5SsyZdDBwkbJsVfEhr0  
yivq6q0ErE0fcdm/WBqWfUgJwIUF9Dte7vykt7n043VZYQLTAcCBPwgggaOMIIFdQAD  
AgECAGoY2d8GAAAAA+MA0GCSqGSIB3DQEBBQUAMDMxGzAZBgNVBAsTEk1pY3Jvc29  
mdCBQ50kgVGVhbnTEUMBIGA1UEAwLRk1FRW50U3ViQ0EwHhcNM2k1MzUxQzA0MDd  
BLENOPUNEUCxDTj1QdWJsaWMLMjBLZXXk1MjBTZXJ2aWN1cyxDtj1TZXXJ2aWN1cy  
xDtj1Db25maWdlcmF0aW9uLERDPWQ5LTEzNTFDMDQwNkEsREM9bnR0ZXN0LERDPW1p  
Y3Jvc29mdCxEQz1jb20/Y0FDZXJ0aWZpY2F0ZT9iYXNlP29iamVjdENsYXNzPWN1cn  
Rpb25ldXRob3JpdHkwHQYDVR0OBBYEFaIBMzPGoRkGpoPN1ZHy7InY1lG+MA4GAlUd  
DwEB/wQEAWIfoDBrBgNVHREEZDBioDcGCisGAQQBgjcuUAGOGKQwnYWJieUBkOS0xMz  
UxQzA0MDZBLm50dGVzdC5taWNyb3NvZnQuY29tgSdhYmJ5QE05LTEzNTFDMDQwNkEu  
TlRURVNUk1JQ1JPU09GVC5DT00wggEiMA0GCSqGSIB3DQEBQUAA4IBDwAwggEK AoIB  
AQCUIUFleKRjXgChj0u0lmiL+GqluG85wgfz2th+w0jM+BA+lKLe57dbCc+FqzpzqJru  
PgGDSAFMP4o6Kk8roM/4kPEVJSYIBidnC3hRx2txSR7HrcSLo8/xhnxWY7m8WjpcFro  
2mBV/JbOnTT5KFU0Z+YSSCGzEVahJqN2Wj1l3VBZ8YCJ3BEUWY1UDYp33zDnPAMULK  
DPUPJlMXUmlX+pUL4vycfnmlon4iGw0kHHCqfM77LNPYJfkdZSgeTFRd2qSPDFUeOur  
woS8whyFvPe2LFT5BRcAoF4dIaRK5DYSCP8yv1xQ+6z/yqD+tZ9WpR0TC7gFi1xeHPr  
U3TpBq5AgMBAAGjggMwMIIDEjBEBgkqhkiG9w0BCQ8ENzA1MA4GCCqGSIB3DQMCAG  
IAgDAOBggqhk1G9w0DBAICAIAwBwYFKw4DAgcwCgYIKoZIhvcNAwcwFwYJKwYBAGCN  
xQCBaoeCABVAHMAZQBByMIHaBggrBgEFBQcBAQSBzTCByjCBxwYIKwYBBQUHMAKGB  
bsZGFwOi8vLONOPUZCX0VudFN1YkNBLENOPUFJQSxDtj1QdWJsaWMLMjBLZXXk1MjB  
TZXJ2aWN1cyxDtj1TZXXJ2aWN1cyxDtj1Db25maWdlcmF0aW9uLERDPWQ5LTEzNTFD  
MDQwNkEsREM9bnR0ZXN0LERDPW1pY3Jvc29mdCxEQz1jb20/Y0FDZXJ0aWZpY2F0Z  
T9iYXNlP29iamVjdENsYXNzPWN1cnRpb25ldXRob3JpdHkwHQYDVR0OBBYEFaIBMzP  
GoRkGpoPN1ZHy7InY1lG+MA4GAlUdDwEB/wQEAWIfoDBrBgNVHREEZDBioDcGCisGA  
QQBgjcuUAGOGKQwnYWJieUBkOS0xMzUxQzA0MDZBLm50dGVzdC5taWNyb3NvZnQuY2  
9tgSdhYmJ5QE05LTEzNTFDMDQwNkEuTlRURVNUk1JQ1JPU09GVC5DT00wgesGA1Ud  
HwSB4zCB4DCB3aCB2qCB14aB1GxkYXA6Ly8vQ049RkJFRW50U3ViQ0EsQ049OS0xMz  
UxQzA0MDdBLENOPUNEUCxDTj1QdWJsaWMLMjBLZXXk1MjBTZXJ2aWN1cyxDtj1TZXX  
J2aWN1cyxDtj1Db25maWdlcmF0aW9uLERDPWQ5LTEzNTFDMDQwNkEsREM9bnR0ZXN0  
LERDPW1pY3Jvc29mdCxEQz1jb20/Y2VydGlmawNhdGVsZXZvY2F0aW9uTG1zdD9iYX  
NlP29iamVjdENsYXNzPWNSTERpc3RyaWJldG1vblBvaW50MB8GA1UdIwQYMBaAFJ+3  
jZGC0QUd0DHiPfaXeoF15VzIMCGA1UdJQJiMCAgCisGAQQBgjckAwQGCCsGAQUFBwME  
BggrBgEFBQcDAjANBgkqhkiG9w0BAQUFAAOCAQEAge5W3XJ3766qGf8Y+r2Yu1GmQ0c  
Skpa7tqeZXwZW51skiv6i0S1NPo67HNp08+UFlYRpdghF+ZwtPnhCdTPieAvN0Hmd1L  
vO+LxTGA16oVCixa3qRG1x2NUQLH7VzH34ugf/YEaJDPJ/9818TJhQQ7iPTi3jl9e52  
rYmNLb450egdmVjhKJIftpcQqbWZY7HP3tziZf50dXhhzg3CGkOJIWqSQPQRKnUkvx  
CjvFIIovrvNM3IlUGDjIu9Ejj1gE1ZSqa4Lixjko2M/hzhWpejKnVAEV9eb+ppWh25  
jblEevk6WrYMgnwPgS9gRBB150q01ahPi6Vj5EOfxOe99KGTANBgkqhkiG9w0BAQUF  
AAOCAQEAL89mJFAUL4Bi2e/8KvIXY6r8CLEsXVVU5NNv16r4wPdkWeuGNteclvyufh  
xr3jNAEVwaechKQcIGKNz5cYd6fBE4LDPp+fiI4YwblbPUgJvZvQpJV5j2+dSux5Ti  
JQYYeX1qrQfG3ioz7m7WSOvoFlmBomGpfUmH2MMdsVSjxFvJ7DShQe0JomRKc5G1X  
p7o5/W5Xi6bn4T0RTIGd6vtsbVata1DJ/jaisGurlv8yqedfAJIE62BbbEWOvIoa6wq  
dhCLLUXilPv3eZy5SsyZdDBwkbJsVfEhr0yivq6q0ErE0fcdm/WBqWfUgJwIUF9Dte7  
vykt7n043VZYQLTAcCBPwgggaOMIIFdQADAgECAGoY2d8GAAAAA+MA0GCSqGSIB3DQ  
EBBQUAMDMxGzAZBgNVBAsTEk1pY3Jvc29mdCBQ50kgVGVhbnTEUMBIGA1UEAwLRk1F  
RW50U3ViQ0EwHhcNM2k1MzUxQzA0MDdBLENOPUNEUCxDTj1QdWJsaWMLMjBLZXXk1M  
jBTZXJ2aWN1cyxDtj1TZXXJ2aWN1cyxDtj1Db25maWdlcmF0aW9uLERDPWQ5LTEzNT  
FDMDQwNkEsREM9bnR0ZXN0LERDPW1pY3Jvc29mdCxEQz1jb20/Y2VydGlmawNhdGVs  
ZXZvY2F0aW9uTG1zdD9iYXNlP29iamVjdENsYXNzPWNSTERpc3RyaWJldG1vblBvaW  
50MB8GA1UdIwQYMBaAFJ+3jZGC0QUd0DHiPfaXeoF15VzIMCGA1UdJQJiMCAgCisG  
AQQBgjckAwQGCCsGAQUFBwMEBggrBgEFBQcDAjANBgkqhkiG9w0BAQUFAAOCAQEAge5  
W3XJ3766qGf8Y+r2Yu1GmQ0cSkpa7tqeZXwZW51skiv6i0S1NPo67HNp08+UFlYRpd  
ghF+ZwtPnhCdTPieAvN0Hmd1LvO+LxTGA16oVCixa3qRG1x2NUQLH7VzH34ugf/YEa  
JDPJ/9818TJhQQ7iPTi3jl9e52rYmNLb450egdmVjhKJIftpcQqbWZY7HP3tziZf50d  
Xhhzg3CGkOJIWqSQPQRKnUkvxCjvFIIovrvNM3IlUGDjIu9Ejj1gE1ZSqa4Lixjko2  
M/hzhWpejKnVAEV9eb+ppWh25jblEevk6WrYMgnwPgS9gRBB150q01ahPi6Vj5EOfx  
Oe99KGTANBgkqhkiG9w0BAQUFAAOCAQEAL89mJFAUL4Bi2e/8KvIXY6r8CLEsXVVU5  
NNv16r4wPdkWeuGNteclvyufhxr3jNAEVwaechKQcIGKNz5cYd6fBE4LDPp+fiI4Yw  
blbPUgJvZvQpJV5j2+dSux5TiJQYYeX1qrQfG3ioz7m7WSOvoFlmBomGpfUmH2MMds  
VSjxFvJ7DShQe0JomRKc5G1Xp7o5/W5Xi6bn4T0RTIGd6vtsbVata1DJ/jaisGurlv8  
yqedfAJIE62BbbEWOvIoa6wqdhCLLUXilPv3eZy5SsyZdDBwkbJsVfEhr0yivq6q0Er  
E0fcdm/WBqWfUgJwIUF9Dte7vykt7n043VZYQLTAcCBPwgggaOMIIFdQADAgECAGoY  
2d8GAAAAA+MA0GCSqGSIB3DQEBBQUAMDMxGzAZBgNVBAsTEk1pY3Jvc29mdCBQ50k  
gVGVhbnTEUMBIGA1UEAwLRk1FRW50U3ViQ0EwHhcNM2k1MzUxQzA0MDdBLENOPUNE  
UCxDTj1QdWJsaWMLMjBLZXXk1MjBTZXJ2aWN1cyxDtj1TZXXJ2aWN1cyxDtj1Db25m  
aWdlcmF0aW9uLERDPWQ5LTEzNTFDMDQwNkEsREM9bnR0ZXN0LERDPW1pY3Jvc29md  
CxEQz1jb20/Y2VydGlmawNhdGVsZXZvY2F0aW9uTG1zdD9iYXNlP29iamVjdENsYXNz  
PWNSTERpc3RyaWJldG1vblBvaW50MB8GA1UdIwQYMBaAFJ+3jZGC0QUd0DHiPfaXeo  
F15VzIMCGA1UdJQJiMCAgCisGAQQBgjckAwQGCCsGAQUFBwMEBggrBgEFBQcDAjANB  
gkqhkiG9w0BAQUFAAOCAQEAL89mJFAUL4Bi2e/8KvIXY6r8CLEsXVVU5NNv16r4wPdk  
WeuGNteclvyufhxr3jNAEVwaechKQcIGKNz5cYd6fBE4LDPp+fiI4YwblbPUgJvZvQp  
JV5j2+dSux5TiJQYYeX1qrQfG3ioz7m7WSOvoFlmBomGpfUmH2MMdsVSjxFvJ7DShQ  
e0JomRKc5G1Xp7o5/W5Xi6bn4T0RTIGd6vtsbVata1DJ/jaisGurlv8yqedfAJIE62B  
bbEWOvIoa6wqdhCLLUXilPv3eZy5SsyZdDBwkbJsVfEhr0yivq6q0ErE0fcdm/WBqW  
fUgJwIUF9Dte7vykt7n043VZYQLTAcCBPwgggaOMIIFdQADAgECAGoY2d8GAAAAA+MA  
0GCSqGSIB3DQEBBQUAMDMxGzAZBgNVBAsTEk1pY3Jvc29mdCBQ50kgVGVhbnTEUMBI  
GA1UEAwLRk1FRW50U3ViQ0EwHhcNM2k1MzUxQzA0MDdBLENOPUNEUCxDTj1QdWJsaW  
MLMjBLZXXk1MjBTZXJ2aWN1cyxDtj1TZXXJ2aWN1cyxDtj1Db25maWdlcmF0aW9uL  
ERDPWQ5LTEzNTFDMDQwNkEsREM9bnR0ZXN0LERDPW1pY3Jvc29mdCxEQz1jb20/Y2V  
ydGlmawNhdGVsZXZvY2F0aW9uTG1zdD9iYXNlP29iamVjdENsYXNzPWNSTERpc3Rya  
WJldG1vblBvaW50MB8GA1UdIwQYMBaAFJ+3jZGC0QUd0DHiPfaXeoF15VzIMCGA1U  
dJQJiMCAgCisGAQQBgjckAwQGCCsGAQUFBwMEBggrBgEFBQcDAjANBgkqhkiG9w0BA  
QUFAAOCAQEAL89mJFAUL4Bi2e/8KvIXY6r8CLEsXVVU5NNv16r4wPdkWeuGNteclvy  
ufhxr3jNAEVwaechKQcIGKNz5cYd6fBE4LDPp+fiI4YwblbPUgJvZvQpJV5j2+dSux5  
TiJQYYeX1qrQfG3ioz7m7WSOvoFlmBomGpfUmH2MMdsVSjxFvJ7DShQe0JomRKc5G1  
Xp7o5/W5Xi6bn4T0RTIGd6vtsbVata1DJ/jaisGurlv8yqedfAJIE62BbbEWOvIoa6w  
qdhCLLUXilPv3eZy5SsyZdDBwkbJsVfEhr0yivq6q0ErE0fcdm/WBqWfUgJwIUF9Dte  
7vykt7n043VZYQLTAcCBPwgggaOMIIFdQADAgECAGoY2d8GAAAAA+MA0GCSqGSIB3D  
QEBBQUAMDMxGzAZBgNVBAsTEk1pY3Jvc29mdCBQ50kgVGVhbnTEUMBIGA1UEAwLRk1  
FRW50U3ViQ0EwHhcNM2k1MzUxQzA0MDdBLENOPUNEUCxDTj1QdWJsaWMLMjBLZXXk1  
MjBTZXJ2aWN1cyxDtj1TZXXJ2aWN1cyxDtj1Db25maWdlcmF0aW9uLERDPWQ5LTEz  
NTFDMDQwNkEsREM9bnR0ZXN0LERDPW1pY3Jvc29mdCxEQz1jb20/Y2VydGlmawNhd  
GVsZXZvY2F0aW9uTG1zdD9iYXNlP29iamVjdENsYXNzPWNSTERpc3RyaWJldG1vbl  
BvaW50MB8GA1UdIwQYMBaAFJ+3jZGC0QUd0DHiPfaXeoF15VzIMCGA1UdJQJiMCAg  
CisGAQQBgjckAwQGCCsGAQUFBwMEBggrBgEFBQcDAjANBgkqhkiG9w0BAQUFAAOCAQ  
EAge5W3XJ3766qGf8Y+r2Yu1GmQ0cSkpa7tqeZXwZW51skiv6i0S1NPo67HNp08+U  
FlYRpdghF+ZwtPnhCdTPieAvN0Hmd1LvO+LxTGA16oVCixa3qRG1x2NUQLH7VzH34ug  
f/YEaJDPJ/9818TJhQQ7iPTi3jl9e52rYmNLb450egdmVjhKJIftpcQqbWZY7HP3tzi  
Zf50dXhhzg3CGkOJIWqSQPQRKnUkvxCjvFIIovrvNM3IlUGDjIu9Ejj1gE1ZSqa4L  
ixjko2M/hzhWpejKnVAEV9eb+ppWh25jblEevk6WrYMgnwPgS9gRBB150q01ahPi6V  
j5EOfxOe99KGTANBgkqhkiG9w0BAQUFAAOCAQEAL89mJFAUL4Bi2e/8KvIXY6r8CLEs  
XVVU5NNv16r4wPdkWeuGNteclvyufhxr3jNAEVwaechKQcIGKNz5cYd6fBE4LDPp+fi  
I4YwblbPUgJvZvQpJV5j2+dSux5TiJQYYeX1qrQfG3ioz7m7WSOvoFlmBomGpfUmH2  
MMdsVSjxFvJ7DShQe0JomRKc5G1Xp7o5/W5Xi6bn4T0RTIGd6vtsbVata1DJ/jaisGur  
lv8yqedfAJIE62BbbEWOvIoa6wqdhCLLUXilPv3eZy5SsyZdDBwkbJsVfEhr0yivq6q  
0ErE0fcdm/WBqWfUgJwIUF9Dte7vykt7n043VZYQLTAcCBPwgggaOMIIFdQADAgECAG  
oY2d8GAAAAA+MA0GCSqGSIB3DQEBBQUAMDMxGzAZBgNVBAsTEk1pY3Jvc29mdCBQ50  
kgVGVhbnTEUMBIGA1UEAwLRk1FRW50U3ViQ0EwHhcNM2k1MzUxQzA0MDdBLENOPUNE  
UCxDTj1QdWJsaWMLMjBLZXXk1MjBTZXJ2aWN1cyxDtj1TZXXJ2aWN1cyxDtj1Db25m  
aWdlcmF0aW9uLERDPWQ5LTEzNTFDMDQwNkEsREM9bnR0ZXN0LERDPW1pY3Jvc29md  
CxEQz1jb20/Y2VydGlmawNhdGVsZXZvY2F0aW9uTG1zdD9iYXNlP29iamVjdENsYXNz  
PWNSTERpc3RyaWJldG1vblBvaW50MB8GA1UdIwQYMBaAFJ+3jZGC0QUd0DHiPfaXeo  
F15VzIMCGA1UdJQJiMCAgCisGAQQBgjckAwQGCCsGAQUFBwMEBggrBgEFBQcDAjANB  
gkqhkiG9w0BAQUFAAOCAQEAL89mJFAUL4Bi2e/8KvIXY6r8CLEsXVVU5NNv16r4wPdk  
WeuGNteclvyufhxr3jNAEVwaechKQcIGKNz5cYd6fBE4LDPp+fiI4YwblbPUgJvZvQp  
JV5j2+dSux5TiJQYYeX1qrQfG3ioz7m7WSOvoFlmBomGpfUmH2MMdsVSjxFvJ7DShQ  
e0JomRKc5G1Xp7o5/W5Xi6bn4T0RTIGd6vtsbVata1DJ/jaisGurlv8yqedfAJIE62B  
bbEWOvIoa6wqdhCLLUXilPv3eZy5SsyZdDBwkbJsVfEhr0yivq6q0ErE0fcdm/WBqW  
fUgJwIUF9Dte7vykt7n043VZYQLTAcCBPwgggaOMIIFdQADAgECAGoY2d8GAAAAA+MA  
0GCSqGSIB3DQEBBQUAMDMxGzAZBgNVBAsTEk1pY3Jvc29mdCBQ50kgVGVhbnTEUMBI  
GA1UEAwLRk1FRW50U3ViQ0EwHhcNM2k1MzUxQzA0MDdBLENOPUNEUCxDTj1QdWJsaW  
MLMjBLZXXk1MjBTZXJ2aWN1cyxDtj1TZXXJ2aWN1cyxDtj1Db25maWdlcmF0aW9uL  
ERDPWQ5LTEzNTFDMDQwNkEsREM9bnR0ZXN0LERDPW1pY3Jvc29mdCxEQz1jb20/Y2V  
ydGlmawNhdGVsZXZvY2F0aW9uTG1zdD9iYXNlP29iamVjdENsYXNzPWNSTERpc3Rya  
WJldG1vblBvaW50MB8GA1UdIwQYMBaAFJ+3jZGC0QUd0DHiPfaXeoF15VzIMCGA1U  
dJQJiMCAgCisGAQQBgjckAwQGCCsGAQUFBwMEBggrBgEFBQcDAjANBgkqhkiG9w0BA  
QUFAAOCAQEAL89mJFAUL4Bi2e/8KvIXY6r8CLEsXVVU5NNv16r4wPdkWeuGNteclvy  
ufhxr3jNAEVwaechKQcIGKNz5cYd6fBE4LDPp+fiI4YwblbPUgJvZvQpJV5j2+dSux5  
TiJQYYeX1qrQfG3ioz7m7WSOvoFlmBomGpfUmH2MMdsVSjxFvJ7DShQe0JomRKc5G1  
Xp7o5/W5Xi6bn4T0RTIGd6vtsbVata1DJ/jaisGurlv8yqedfAJIE62BbbEWOvIoa6w  
qdhCLLUXilPv3eZy5SsyZdDBwkbJsVfEhr0yivq6q0ErE0fcdm/WBqWfUgJwIUF9Dte  
7vykt7n043VZYQLTAcCBPwgggaOMIIFdQADAgECAGoY2d8GAAAAA+MA0GCSqGSIB3D  
QEBBQUAMDMxGzAZBgNVBAsTEk1pY3Jvc29mdCBQ50kgVGVhbnTEUMBIGA1UEAwLRk1  
FRW50U3ViQ0EwHhcNM2k1MzUxQzA0MDdBLENOPUNEUCxDTj1QdWJsaWMLMjBLZXXk1  
MjBTZXJ2aWN1cyxDtj1TZXXJ2aWN1cyxDtj1Db25maWdlcmF0aW9uLERDPWQ5LTEz  
NTFDMDQwNkEsREM9bnR0ZXN0LERDPW1pY3Jvc29mdCxEQz1jb20/Y2VydGlmawNhd  
GVsZXZvY2F0aW9uTG1zdD9iYXNlP29iamVjdENsYXNzPWNSTERpc3RyaWJldG1vbl  
BvaW50MB8GA1UdIwQYMBaAFJ+3jZGC0QUd0DHiPfaXeoF15VzIMCGA1UdJQJiMCAg  
CisGAQQBgjckAwQGCCsGAQUFBwMEBggrBgEFBQcDAjANBgkqhkiG9w0BAQUFAAOCAQ  
EAge5W3XJ3766qGf8Y+r2Yu1GmQ

```

Q19FbnRTdWJDQKIGNfBgAAAAAPjAJBgUrDgMCGGUAMA0GCSqGSIb3DQEBAQUA
BIIBAF06/80HTk6v4fX5rYijOEpz43tvLQOk/0SfXeg4Nlm47SAzqDzNSZ3Q1jLJ
vZoBnz4E2vc1TzSLyPMN0o4rxflZwc+2X7MtoYbnbmV1lZnTnQINDfBmIiXyi+L
zkjw+ZOTZUxqNYIXhevKru3P3nDhFENhhSm/qC5Wovg7igCsDh9XJ/G6ZkQ8SEb1
vkBU21RjpOyKYaEUXz/Y0yViIxpYCFPrByDU50ngXhwOhBcbAc5RImhI807xE04W
YQ13sBxW1lsFuxMsmzWQ1TjrFauvjoPt96Hflog96p9w8D1zKxtlhcI+XqIIqur
30aWtKmxTQTxG8uBCrczYAgfWGk=</BinarySecurityToken>
<RequestID xsi:nil="true"
xmlns="http://schemas.microsoft.com/windows/pki/2009/01/enrollment" />
</RequestSecurityToken>
</s:Body>
</s:Envelope>

```

#### 4.1.5.2 Server Request Security Token Response

```

<s:Envelope xmlns:s="http://www.w3.org/2003/05/soap-envelope"
xmlns:a="http://www.w3.org/2005/08/addressing">
  <s:Header>
    <a:Action s:mustUnderstand="1">
http://schemas.microsoft.com/windows/pki/2009/01/enrollment/RSTRC/wstep</a:Action>
    <ActivityId CorrelationId="b17bfb40-747b-477a-a83c-175624e401aa"
xmlns="http://schemas.microsoft.com/2004/09/ServiceModel/Diagnostics">
0a9f1849-8211-489c-a2b7-6a07ed1e6832</ActivityId>
    <a:RelatesTo>urn:uuid:b0a9b388-2581-451d-8c03-270d4ffe2928</a:RelatesTo>
  </s:Header>
  <s:Body>
    <RequestSecurityTokenResponseCollection
xmlns="http://docs.oasis-open.org/ws-sx/ws-trust/200512">
    <RequestSecurityTokenResponse>
    <TokenType>
http://docs.oasis-open.org/wss/2004/01/
oasis-200401-wss-x509-token-profile-1.0#X509v3</TokenType>
    <DispositionMessage xml:lang="en-US"
xmlns="http://schemas.microsoft.com/windows/pki/2009/01/
enrollment">Issued</DispositionMessage>
    <BinarySecurityToken
ValueType="http://docs.oasis-open.org/wss/2004/01/
oasis-200401-wss-wssecurity-secext-1.0.xsd#PKCS7"
EncodingType="http://docs.oasis-open.org/wss/2004/01/
oasis-200401-wss-wssecurity-secext-1.0.xsd#base64binary"
xmlns="http://docs.oasis-open.org/wss/2004/01/oasis-200401-wss-wssecurity-secext-
1.0.xsd">MIIRL1AYJKoZIhvcNAQcCoIIRhTCCEYECAQMxCzAJBgUrDgMCGGUAMH0GCCsGAQUF
BwwDoHEEbzBtMGcwIQIBAQYIKwYBBQUHwExEjAQAQEAAMAMCAQEMBKlzc3VlZDBC
AgECBgorBgEEAYI3CgoBMTEwLwIBADADAgEBMSUwIwYJKwYBBAGCNxURMRYEfIog
XmwOBoUm1DF7AGxjuxgurDsImAAwAKCCD0EwggNbMIIcQ6ADAgECAhAeqf9153Dz
n0o0G27H8w6RMA0GCSqGSIb3DQEBBQUAMdQxGzAZBgNVBAsTEklpY3Jvc29mdCBQ
S0kgVG9vbTEVMBMGAlUEAwMRkJfRW50Um9vdENBMB4XDTA5MDMwMzAzMjQxMl0x
DTE0MDMwMzAzMzQxMFowNDEbMBkGA1UECXMSTWljcm9zb2Z0IFBLSzBUZWFtMRUw
EwYDVQDDAxGQ19FbnRSb290Q0EwggEiMA0GCSqGSIb3DQEBAQUAA4IBDwAwggEK
AoIBAQCnEl54od1KuJPZ8BoaqVIsuE4BX9dXTsk0BmBVbl1PlyZi1RWm0NE1Zr40
TdgGZ/Nv69kwCozi0D0Eo58fHYz3FAh6rw4o+ABpx9nFJlJj69D9H7JIQWswdTOe
nQxvW59vzotQfMz00T//lNCilX3aEMj6VjArX51fYLCqBr2Qgw9BmEkaiVntw9Vd
1gvJTPNoyG79c2V2Mux+4M9dzIR17xw8Mx4LhJrXXXQPZ1YgwVeWdAXelS5aaoXG
LI2Gixl5LtsUQzYxcel1SVotVcFR4NM31Xkis5x679DtxMoB2gYqjUhkBlhTLIQwK
8V5v5jjjy7tXP5qIEpOq7B6NCzAgMBAAGjaTBnMBMGCSsGAQQBgjCUAgQGhGQA
QwBBMA4GA1UdDwEB/wQEAwIBhjAPBgNVHRMBAf8EBTADAQH/MB0GA1UdDgQWBBS9
oNbJuWz92vLuQSIJlDzAmg3dVTAQBgkrBgEEAYI3FQEEAwIBADANBgkqhkiG9w0B
AQUFAAOCAQEAVr8MMHZhcnuUyKGFNBE8qNPKIHI9oDeee3jnChqO9wmKbEzV4701
+ejdiDjciC9FQlHHbuWxhkPj0nAtqXN48E9XLPzS/ezx/LwsEv5LlroioRBym8NbA
ldLJNFqskrC0FAhefg9Jc4c91Q3uyGUjMb4Hoa9b2c9NIeMeRzV+L1oH0wVZpg9o
i8OoCIFX/woETKbryiLnXPLYbdQu0E7brTkyYmXJsGuFPGLzj6DVFOdb1ZMmEJNy
6Qpr98dfJYwcnwhjdVx0FtRTsXnU8epeAYOEHWJCuU01bWpcRPF6C6sJY0wmRaP7
iOCGXhoF061cbL08fztvGpUkyZfDoHg3DCCBUwggQ0oAMCAQICcmEMfNwAAAA
AAIwDQYJKoZIhvcNAQEFBQAwNDEbMBkGA1UECXMSTWljcm9zb2Z0IFBLSzBUZWFt
MRUwEwYDVQDDAxGQ19FbnRSb290Q0EwHhcNMDkMwzAzMDMyNjE2W2hcnMTEmMzAz

```

MDMzNjE2WjAzMRswGQYDVQQLExJNaWNyb3NvZnQgUETJFRlYW0xYDASBGNVBAAM  
C0ZCX0VudFNlYkNBMIIBIjANBgkqhkiG9w0BAQEFAAOCAQ8AMIIBcGKCAQEAzqt1  
8VMe3t1durXs8LORjWbWoxDQtTPJALYNQdqvs+H2HutRUnjvW/+vK0Am0ib8GR3u  
D8IT+Kk8TJvzSGOwQAKxYtzaqjDt7Alc7Utsne1SiKDT5ZSf1pmfUvASKd28jJ4Y  
B1SDJSiJmOyWqUZCnwAwW0VXCRmK1QnyGjr3Akq+p6Mgo/ZqaeFuJ4o7jJjI/em  
BN5mM0Lx00yYjQF79bQbJagd0bidQkfsASDW3HAyctcWuKfmfjF5vPMZqLwcaRjAS  
v2tEn9urPDJv4mhXrTz53ETuplkA0m95BQULnLXXHreXImUkGacdPhd1hCWm9KE  
v1Q1vsks9UUBFHUCkWIQAQBo4ICXzCCALswEAYJKWYBBAGCNxUBBAMCAQAwHQYD  
VR0OBbYEFJ+3jZGC0Qud0DHipfaXeoF15VzIMBkGCSsGAQQBgjCUAgQMhgoAUwB1  
AGIAQwBBMA4GA1UdDwEB/wQEAWIBhjAPBgNVHRMBAf8EBTADAQH/MB8GA1UdIwQY  
MBaAFL2g1sm5bP3a8u5B1gmUPNqaDd1VMIHsBgNVHR8EgeQwgeEwgddggduggdiG  
gdVsZGFwOi8vLONOPUZCX0VudFJvb3RDQsXDTj05LTEzNTFDMDQwNkEsQ049Q0RQ  
LENOFVBlYmYyYUyMetleSUyMFNlcnZpY2VzLENOFVNlcnZpY2VzLENOFVNvbmZp  
Z3VyYXRpb24sREM9ZDktMTM1MUMwNDA2QsXEQz1udHRlcn3QsREM9bW1jcm9zb2Z0  
LERDPWNvbT9jZXJ0aWZpY2F0ZVJldm9jYXRpb25MaXN0P2Jhc2U/b2JqZWN0Q2xh  
c3M9Y1JMRGlzdHJpYnV0aW9uUG9pbmQwGdsGCCsGAQUFBwEBBIBHOMIHLMIHIBggr  
BgEFBQcwAoaBu2xkYXA6Ly8vQ049RkRkRFRW50Um9vdENBLENOFUFJQSxDTj1QdWJs  
aWMLMjBLZXklMjBTZXJ2aWNlcyxDTj1TZXJ2aWNlcyxDTj1Db25maWdlcmF0aW9u  
LERDPWQ5LTEzNTFDMDQwNkEsREM9bnR0ZXN0LERDPW1pY3Jvc29mdCxEQz1jb20/  
Y0FDZlJ0aWZpY2F0ZT9iYXNlP29iamVjdENsYXNzPWNlcnRpb25BdXR0b3Jp  
dHkwdQYKJ0ZiHvcNAQEFBQADggEBACUFJf5b34y2bob4+rmjCJ2F4MRRg8C3  
v91tkpa168neRyC2tNUOC+hav5QZ2DjW8Kwns+rRblUW/5iRa/7uKhnHYyS14Yv0  
I/LddT1v5Pf5uv5CK0YbmQiGx37aLLHjDngerh346N+z75kZJ18eEVNUPZUQ/ZB  
btqb7GAKCIRVijJ+9sprGRJoIFjFAUI7jThssG1zobaLjyW4IvMX0+VpGpr8zxM  
Zfk0P4kr3Ou+TSVK1H0cBSFy4SgkcSdxVfKoyCEm7Pr4osxVhCfkC9JgiihYldil  
xgt4U54nFAGUrtbHj+YjHJLqQYafPGCYfB9bR4M1/1jhV05F1V61zIwggAOMIIF  
dqADAgECAgoY2eyOAAAAA/MA0GCSqGSIB3DQEBBQUAMDMxGAZBgNVBAsTEklp  
Y3Jvc29mdCBQ50kgVGVhbTEUMBIGA1UEAwLRkRFRW50U3ViQ0EwHhcnMDkMzA1  
MTgyNjIxWhcNMTAwMzA1MTgyNjIxWjCBvjETMBEGCgmsJomT8ixkARkWA2NvbTEZ  
MbcGcmSjOMT8ixkARkWCW1pY3Jvc29mdDEWMBQGCgmsJomT8ixkARkWBm50dGVz  
dEdEMBsGCgmsJomT8ixkARkWDWQ5LTEzNTFDMDQwNkEsDjAMBGNVBAMTBVVzZXJz  
MQ0wCwYDVQDEwRhYm5MTYwNAyJKoZiHvcNAQkBFidhYmJ5QEQ5LTEzNTFDMDQw  
NkEuTlRURVNULk1JQ1JPU09GVC5DT00wggeEiMA0GCSqGSIB3DQEBQUAA4IBDwAw  
ggEKAoIBAQQD7G7WYtjrl1F0S4zEY2JZG7yTThp8cXI50LdYS0bWxJLZJ3fmTD  
646r/oCeGki0ogMJO7JUeMgb0F70fqmJH7GaXe6i+QGPy7DaTYYCtn94wPZQQGK6  
Mrnl1jPQyUU/1IOVQxukjZnzT11y9E/XfPloqTm6p3F6GksLe0kTOMIq0xqXV181  
Hh5mzR7ddrZ4YjyQf200nlqNe233vHmiJbLTR1WFN4a+onBSFAUiNTyJXquNdDg  
za8eyNwe1eJlJzxxARKWCW1pY3Jvc29mdDEWMBQGCs1VgOvdDEDU3mCoCaOLw4i5pURRnj  
6RN8VemOIVQSB/XR7si3Xfi5wauKNC6rAgMBAAGjggMWMIIDEjBEBGkqhkiG9w0B  
CQ8ENzA1MA4GCCqGSIB3DQMCAGIAgDAOBggqhkkiG9w0DBAICAIABwYFKw4DAgcw  
CgYIKoZIhvcNAQcFwYJKWYBBAGCNxQCBAAoeCABVAHMAZQBYMIHaBggrBgEFBQcB  
AQSBzTCByjCBxwYIKwYBBQUHMAKGGbbsZGFwOi8vLONOPUZCX0VudFNlYkNBLENO  
PUFJQSxDTj1QdWJsawMLMjBLZXklMjBTZXJ2aWNlcyxDTj1TZXJ2aWNlcyxDTj1D  
b25maWdlcmF0aW9uLERDPWQ5LTEzNTFDMDQwNkEsREM9bnR0ZXN0LERDPW1pY3Jv  
c29mdCxEQz1jb20/Y0FDZlJ0aWZpY2F0ZT9iYXNlP29iamVjdENsYXNzPWNlcnRpb25B  
dXR0b3JpZDhkbW9uLERDPWQ5LTEzNTFDMDQwNkEsREM9bnR0ZXN0LERDPW1pY3Jv  
c29mdCxEQz1jb20/Y2VydG1maWNhdGVsZXZvY2F0aW9uTG1zdD9iYXNlP29iamVj  
dENsYXNzPWNSTERpc3RyaWJldGlvblBvaW50MB8GA1UdIwQYMBaAFJ+3jZGC0Qud  
0DHipfaXeoF15VzIMCkGAlUdJQqIMCAGCisGAQQBgjCUAgQGCCsGAQUFBwEBBgggr  
BgEFBQcDAjANBgkqhkiG9w0BAQUFAAOCAQEAOZEIMPDLBVA9G10i/Y4S4EN9x6C  
MpbZ6krcUPEL2bRy1J7XJxxmq5VD6Fds90jdTHkLng4U5TtW6B1cjC55JiaUsQMj  
Etyr8/b08Xvbg4pR6MDLHIO5hxQScXNOubX4hjKyG9guJbTau9zLVVziHO7YXzYE  
AJ95NiQKw+bIks/uLnF0HjOgq9NE2q6CEDpduP3X4N3X6WjDuZL8aj42GipN9PW  
9emOn2fwhQz05VT4KIM6y+PjC93B8k3wayStolsGKHChb80Trj6jFLUR7RtN5LuN  
7MnUA1B/xsEP/T4iafSYaPmpLikaRJEwqJAvkQ/g7pmGrYNJ2I0Xww/4jGCAakw  
gg1AgEBMEIwNDEbMBKGA1UECXMSTW1jcm9zb2Z0IFBLSzBUZWFtMRUwEwYDVQDD  
DAXQ19FbnRsb290QDECCEMfNwAAAAAIAwCQYFKw4DAHoFAKA+MBCGCCsGIB3  
DQEJAZEKBggrBgEFBQcMAZAJBgkqhkiG9w0BCQQQxFgQUoOwV5P4v001TW171ZHHO  
acJ3I2QwDQYJKoZIhvcNAQEBBQAEggEANOUXGUWciZM9zOIFt50AkL82/Dhk43t  
PelklvP4s3s/7EtKn04qbfVV4//HYWpcXz24dJ/SWZSTApW1KffKIY6Y67nL/dsn  
swYSeBwxhZp6ZiYk81lepCR+ebR8nR1G9ZTow7yE0e9NZW/OR9IiifwvPf8EMJBo/  
6kXZaY/Ppz3ON1jXfVmuAipYHn033A8PqR2i2/fj0+z2MC5grmkFOHxd4Sg90inQ  
deTO8i8ksQ+aO/LsbEShmK/qWmHnnQ45Z8bWxkpvt7EtxpYwQiZt61U2oQt/UYL  
hZBPEYQC1KpgCTMmVuzk6NdEim2z7RXUMIFBmjDTA6M9FdlmMKQDw==</BinarySecurityToken>



## **5 Security**

### **5.1 Security Considerations for Implementers**

None.

### **5.2 Index of Security Parameters**

None.

## 6 Appendix A: Full WSDL

The WSTEP protocol is a profile extension of WS-Trust1.3. As such, it does not have a WSDL.

**WS-Trust 1.3 WSDL:** The full WSDL for WS-Trust can be found at: <http://docs.oasis-open.org/ws-sx/ws-trust/200512/ws-trust-1.3.wsdl>.

**WSTEP XML Schema:** For the convenience of implementation, the XML Schema is provided here.

```
<xs:schema xmlns:xs="http://www.w3.org/2001/XMLSchema"
  xmlns:wstep="http://schemas.microsoft.com/windows/pki/2009/01/enrollment"
  targetNamespace="http://schemas.microsoft.com/windows/pki/2009/01/enrollment"
  elementFormDefault="qualified">

  <xs:import namespace="http://www.w3.org/XML/1998/namespace"
    schemaLocation="http://www.w3.org/2001/xml.xsd" />

  <xs:element name="DispositionMessage" type="wstep:DispositionMessageType" nillable="true"
  />
  <xs:complexType name="DispositionMessageType">
    <xs:simpleContent>
      <xs:extension base="xs:string">
        <xs:attribute ref="xml:lang" use="optional" />
      </xs:extension>
    </xs:simpleContent>
  </xs:complexType>
  <xs:element name="CertificateEnrollmentWSDetail" nillable="true"
    type="wstep:CertificateEnrollmentWSDetailType" />
  <xs:complexType name="CertificateEnrollmentWSDetailType">
    <xs:sequence>
      <xs:element minOccurs="0" maxOccurs="1" name="BinaryResponse" nillable="true"
        type="xs:string" />
      <xs:element minOccurs="0" maxOccurs="1" name="ErrorCode" nillable="true" type="xs:int"
        />
      <xs:element minOccurs="0" maxOccurs="1" name="InvalidRequest" nillable="true"
        type="xs:boolean" />
      <xs:element minOccurs="0" maxOccurs="1" name="RequestID" type="xs:string"
        nillable="true" />
    </xs:sequence>
  </xs:complexType>
  <xs:element name="RequestID" type="xs:string" nillable="true" />
</xs:schema>
```

## 7 (Updated Section) Appendix B: Product Behavior

The information in this specification is applicable to the following Microsoft products or supplemental software. References to product versions include updates to those products.

The following table shows the relationships between Microsoft product versions or supplemental software and the roles they perform.

Windows Releases	Server Role	Client Role
Windows 7 operating system	No	Yes
Windows Server 2008 R2 operating system	Yes	Yes
Windows 8 operating system	No	Yes
Windows Server 2012 operating system	Yes	Yes
Windows 8.1 operating system	No	Yes
Windows Server 2012 R2 operating system	Yes	Yes
Windows 10 operating system	No	Yes
Windows Server 2016 operating system	Yes	Yes
Windows Server operating system	Yes	Yes
Windows Server 2019 operating system	Yes	Yes
Windows Server 2022 operating system	Yes	Yes
Windows 11 operating system	No	Yes

Exceptions, if any, are noted in this section. If an update version, service pack or Knowledge Base (KB) number appears with a product name, the behavior changed in that update. The new behavior also applies to subsequent updates unless otherwise specified. If a product edition appears with the product version, behavior is different in that product edition.

Unless otherwise specified, any statement of optional behavior in this specification that is prescribed using the terms "SHOULD" or "SHOULD NOT" implies product behavior in accordance with the SHOULD or SHOULD NOT prescription. Unless otherwise specified, the term "MAY" implies that the product does not follow the prescription.

<1> Section 3.1.3: Applicable Windows Server releases set the *DefaultLanguage* parameter to the installed language.



## 8 Change Tracking

This section identifies changes that were made to this document since the last release. Changes are classified as Major, Minor, or None.

The revision class **Major** means that the technical content in the document was significantly revised. Major changes affect protocol interoperability or implementation. Examples of major changes are:

- A document revision that incorporates changes to interoperability requirements.
- A document revision that captures changes to protocol functionality.

The revision class **Minor** means that the meaning of the technical content was clarified. Minor changes do not affect protocol interoperability or implementation. Examples of minor changes are updates to clarify ambiguity at the sentence, paragraph, or table level.

The revision class **None** means that no new technical changes were introduced. Minor editorial and formatting changes may have been made, but the relevant technical content is identical to the last released version.

The changes made to this document are listed in the following table. For more information, please contact [dochelp@microsoft.com](mailto:dochelp@microsoft.com).

Section	Description	Revision class
7 Appendix B: Product Behavior	Updated for this version of Windows Client.	Major

## 9 Index

### A

- Abstract data model 16
  - server 16
- Applicability 11
- Attribute groups 14
- Attributes 14
  - overview 14
  - RequestSecurityToken2 24
- Authentication 16

### C

- Capability negotiation 11
- Change tracking 41
- Complex types 13
  - overview 13
  - RequestSecurityToken2
    - DispositionMessageType 19
    - overview 19
    - RequestedSecurityTokenEnrollmentType 19
    - RequestSecurityTokenEnrollmentType 20
    - RequestSecurityTokenResponseCollectionEnrollmentType 22
    - RequestSecurityTokenResponseEnrollmentType 21
    - RequestTypeEnum 23

### D

- Data model - abstract 16
  - server 16

### E

- Elements
  - overview 13
  - RequestSecurityToken2
    - DispositionMessage 18
    - RequestID 18
    - RequestSecurityToken 18
    - RequestSecurityTokenResponseCollection 18
    - RequestType 18
    - TokenType 19
- Events
  - local 26
  - local - server 26
  - timer 25
  - timer - server 25
- Examples - RequestSecurityToken request/response message sequence 27

### F

- Fields - vendor-extensible 11
- Full WSDL 39

### G

- Glossary 6
- Groups 14

### I

- Implementer - security considerations 38
- Index of security parameters 38
- Informative references 8
- Initialization 16
  - server 16
- Introduction 6
- Issue request processing 24

## **K**

- Key Exchange Token request processing 25

## **L**

- Local events 26
  - server 26

## **M**

- Message processing
  - overview 17
  - RequestSecurityToken2
    - attributes 24
    - complex types 19
    - elements 17
    - messages 17
    - overview 17
    - server 17
- Messages
  - attribute groups 14
  - attributes 14
  - complex types 13
  - elements 13
  - enumerated 13
  - groups 14
  - namespaces 13
  - simple types 13
  - syntax 13
  - transport 13

## **N**

- Namespaces 13
- Normative references 7

## **O**

- Operations
  - Processing Rules 24
  - wst:RequestSecurityToken2 17
- Overview (synopsis) 8

## **P**

- Parameters - security index 38
- Preconditions 11
- Prerequisites 11
- Processing rules
  - Issue request 24
  - Key Exchange Token request 25
  - overview 24
  - QueryTokenStatus request 25
  - Renew request 24
- Product behavior 40

Protocol Details  
overview 15

## Q

QueryTokenStatus request processing 25

## R

References 7  
  informative 8  
  normative 7  
Relationship to other protocols 10  
Renew request processing 24  
RequestSecurityToken request/response message sequence example 27  
RequestSecurityToken2  
  attributes 24  
  complex types  
    DispositionMessageType 19  
    overview 19  
    RequestedSecurityTokenEnrollmentType 19  
    RequestSecurityTokenEnrollmentType 20  
    RequestSecurityTokenResponseCollectionEnrollmentType 22  
    RequestSecurityTokenResponseEnrollmentType 21  
    RequestTypeEnum 23  
  elements  
    DispositionMessage 18  
    RequestID 18  
    RequestSecurityToken 18  
    RequestSecurityTokenResponseCollection 18  
    RequestType 18  
    TokenType 19  
  messages  
    overview 17  
    RequestSecurityTokenMsg 17  
    RequestSecurityTokenResponseCollectionMsg 17  
  overview 17

## S

Security  
  implementer considerations 38  
  parameter index 38  
SecurityTokenService server  
  abstract data model 16  
  initialization 16  
  local events 26  
  message processing  
    overview 17  
    RequestSecurityToken2 17  
  overview 15  
  processing rules  
    Issue request 24  
    Key Exchange Token request 25  
    overview 24  
    QueryTokenStatus request 25  
    Renew request 24  
  sequencing rules  
    overview 17  
    RequestSecurityToken2 17  
  timer events 25  
  timers 16  
Sequencing rules  
  overview 17  
  RequestSecurityToken2

- attributes 24
- complex types 19
- elements 17
- messages 17
- overview 17
- server 17
- Server
  - abstract data model 16
  - initialization 16
  - local events 26
  - message processing 17
  - Processing Rules operation 24
  - sequencing rules 17
  - timer events 25
  - timers 16
  - wst:RequestSecurityToken2 operation 17
- Server - SecurityTokenService - overview 15
- Simple types 13
- Standards assignments 12
- Syntax
  - messages - overview 13
- Syntax - messages - overview 13

## **T**

- Timer events 25
  - server 25
- Timers 16
  - server 16
- Tracking changes 41
- Transport 13
- Types
  - complex 13
  - simple 13

## **V**

- Vendor-extensible fields 11
- Versioning 11

## **W**

- WSDL 39