

[MS-WDSC]: Windows Deployment Services Control Protocol

Intellectual Property Rights Notice for Open Specifications Documentation

- **Technical Documentation.** Microsoft publishes Open Specifications documentation for protocols, file formats, languages, standards as well as overviews of the interaction among each of these technologies.
- **Copyrights.** This documentation is covered by Microsoft copyrights. Regardless of any other terms that are contained in the terms of use for the Microsoft website that hosts this documentation, you may make copies of it in order to develop implementations of the technologies described in the Open Specifications and may distribute portions of it in your implementations using these technologies or your documentation as necessary to properly document the implementation. You may also distribute in your implementation, with or without modification, any schema, IDL's, or code samples that are included in the documentation. This permission also applies to any documents that are referenced in the Open Specifications.
- **No Trade Secrets.** Microsoft does not claim any trade secret rights in this documentation.
- **Patents.** Microsoft has patents that may cover your implementations of the technologies described in the Open Specifications. Neither this notice nor Microsoft's delivery of the documentation grants any licenses under those or any other Microsoft patents. However, a given Open Specification may be covered by Microsoft [Open Specification Promise](#) or the [Community Promise](#). If you would prefer a written license, or if the technologies described in the Open Specifications are not covered by the Open Specifications Promise or Community Promise, as applicable, patent licenses are available by contacting iplg@microsoft.com.
- **Trademarks.** The names of companies and products contained in this documentation may be covered by trademarks or similar intellectual property rights. This notice does not grant any licenses under those rights. For a list of Microsoft trademarks, visit www.microsoft.com/trademarks.
- **Fictitious Names.** The example companies, organizations, products, domain names, email addresses, logos, people, places, and events depicted in this documentation are fictitious. No association with any real company, organization, product, domain name, email address, logo, person, place, or event is intended or should be inferred.

Reservation of Rights. All other rights are reserved, and this notice does not grant any rights other than specifically described above, whether by implication, estoppel, or otherwise.

Tools. The Open Specifications do not require the use of Microsoft programming tools or programming environments in order for you to develop an implementation. If you have access to Microsoft programming tools and environments you are free to take advantage of them. Certain Open Specifications are intended for use in conjunction with publicly available standard specifications and network programming art, and assumes that the reader either is familiar with the aforementioned material or has immediate access to it.

Revision Summary

Date	Revision History	Revision Class	Comments
02/27/2009	0.1	Major	First Release.
04/10/2009	1.0	Major	Updated and revised the technical content.
05/22/2009	1.0.1	Editorial	Revised and edited the technical content.
07/02/2009	1.0.2	Editorial	Revised and edited the technical content.
08/14/2009	1.0.3	Editorial	Revised and edited the technical content.
09/25/2009	1.1	Minor	Updated the technical content.
11/06/2009	1.1.1	Editorial	Revised and edited the technical content.
12/18/2009	1.2	Minor	Updated the technical content.
01/29/2010	1.2.1	Editorial	Revised and edited the technical content.
03/12/2010	1.2.2	Editorial	Revised and edited the technical content.
04/23/2010	1.2.3	Editorial	Revised and edited the technical content.
06/04/2010	1.3	Minor	Updated the technical content.
07/16/2010	1.3	No change	No changes to the meaning, language, or formatting of the technical content.
08/27/2010	1.3	No change	No changes to the meaning, language, or formatting of the technical content.
10/08/2010	1.3	No change	No changes to the meaning, language, or formatting of the technical content.
11/19/2010	1.3	No change	No changes to the meaning, language, or formatting of the technical content.
01/07/2011	1.3	No change	No changes to the meaning, language, or formatting of the technical content.
02/11/2011	1.3	No change	No changes to the meaning, language, or formatting of the technical content.
03/25/2011	1.3	No change	No changes to the meaning, language, or formatting of the technical content.
05/06/2011	2.0	Major	Significantly changed the technical content.
06/17/2011	2.1	Minor	Clarified the meaning of the technical content.
09/23/2011	2.1	No change	No changes to the meaning, language, or formatting of the technical content.

Date	Revision History	Revision Class	Comments
12/16/2011	3.0	Major	Significantly changed the technical content.
03/30/2012	3.0	No change	No changes to the meaning, language, or formatting of the technical content.
07/12/2012	3.0	No change	No changes to the meaning, language, or formatting of the technical content.
10/25/2012	3.0	No change	No changes to the meaning, language, or formatting of the technical content.
01/31/2013	3.0	No change	No changes to the meaning, language, or formatting of the technical content.
08/08/2013	4.0	Major	Significantly changed the technical content.

Contents

1 Introduction	6
1.1 Glossary	6
1.2 References	6
1.2.1 Normative References	7
1.2.2 Informative References	7
1.3 Overview	7
1.4 Relationship to Other Protocols	8
1.5 Prerequisites/Preconditions	8
1.6 Applicability Statement	8
1.7 Versioning and Capability Negotiation	9
1.8 Vendor-Extensible Fields	9
1.9 Standards Assignments	9
2 Messages	10
2.1 Transport	10
2.1.1 Server Security Settings	10
2.1.2 Client Security Settings	10
2.1.3 RPC as Transport	10
2.2 Common Data Types	10
2.2.1 Messages	11
2.2.1.1 Endpoint Header	11
2.2.1.2 Operation Header	12
2.2.1.2.1 Packet Type	13
2.2.1.3 Variables Section	13
2.2.1.3.1 Variable Description Block	13
2.2.1.3.2 Variable Types	14
2.2.1.3.2.1 Base Types	15
2.2.1.3.2.2 Type Modifiers	15
2.2.1.3.3 Variable Value Length	15
2.2.1.3.3.1 Variables without Type Modifiers	16
2.2.1.3.3.2 Variables with WDS CPL_VAR_ARRAY Type Modifier	16
3 Protocol Details	17
3.1 Server Details	17
3.1.1 Abstract Data Model	17
3.1.1.1 Configuration	17
3.1.2 Timers	17
3.1.3 Initialization	17
3.1.3.1 Service Providers Initialization	18
3.1.3.2 RPC Server Initialization	18
3.1.4 Message Processing Events and Sequencing Rules	18
3.1.4.1 WdsRpcMessage (opnum 0)	18
3.1.4.2 Failure Cases	19
3.1.5 Timer Events	20
3.1.6 Other Local Events	20
3.2 Client Details	20
3.2.1 Abstract Data Model	20
3.2.2 Timers	20
3.2.3 Initialization	20
3.2.4 Message Processing Events and Sequencing Rules	20

3.2.5	Timer Events	21
3.2.6	Other Local Events	21
4	Protocol Examples	22
5	Security	23
5.1	Security Considerations for Implementers	23
5.2	Index of Security Parameters	23
6	Appendix A: Full IDL	24
7	Appendix B: Product Behavior	25
8	Change Tracking	26
9	Index	28

1 Introduction

The Windows Deployment Services (WDS) Control Protocol specifies an RPC interface that provides the ability to remotely invoke services provided by **WDS Server**. It is a client/server protocol which uses RPC as a transport. The protocol provides a generic invocation mechanism to send requests to a server and receive replies.

Sections 1.8, 2, and 3 of this specification are normative and can contain the terms MAY, SHOULD, MUST, MUST NOT, and SHOULD NOT as defined in RFC 2119. Sections 1.5 and 1.9 are also normative but cannot contain those terms. All other sections and examples in this specification are informative.

1.1 Glossary

The following terms are defined in [\[MS-GLOS\]](#):

authentication level
dynamic endpoint
endpoint
globally unique identifier (GUID)
Interface Definition Language (IDL)
opnum
remote procedure call (RPC)
RPC protocol sequence
RPC transport
universally unique identifier (UUID)

The following terms are specific to this document:

Endpoint GUID: Set of relevant services provided by a **Service Provider** are grouped together and as a whole identified by a unique Endpoint GUID.

OpCode: Each service provided by Service Provider under an **Endpoint GUID** is identified by a number which must be unique under that **Endpoint GUID**.

Service Provider: A module that is loaded by the WDS Server and is responsible for providing services to the clients.

WDS Server: Windows Deployment Services Server provides an extensible mechanism to allow **Service Providers** to provide services to clients.

MAY, SHOULD, MUST, SHOULD NOT, MUST NOT: These terms (in all caps) are used as described in [\[RFC2119\]](#). All statements of optional behavior use either MAY, SHOULD, or SHOULD NOT.

1.2 References

References to Microsoft Open Specifications documentation do not include a publishing year because links are to the latest version of the documents, which are updated frequently. References to other documents include a publishing year when one is available.

A reference marked "(Archived)" means that the reference document was either retired and is no longer being maintained or was replaced with a new document that provides current implementation details. We archive our documents online [\[Windows Protocol\]](#).

1.2.1 Normative References

We conduct frequent surveys of the normative references to assure their continued availability. If you have any issue with finding a normative reference, please contact dochelp@microsoft.com. We will assist you in finding the relevant information. Please check the archive site, <http://msdn2.microsoft.com/en-us/library/E4BD6494-06AD-4aed-9823-445E921C9624>, as an additional source.

[C706] The Open Group, "DCE 1.1: Remote Procedure Call", C706, August 1997, <http://www.opengroup.org/public/pubs/catalog/c706.htm>

[MS-DTYP] Microsoft Corporation, "[Windows Data Types](#)".

[MS-ERREF] Microsoft Corporation, "[Windows Error Codes](#)".

[MS-RPCE] Microsoft Corporation, "[Remote Procedure Call Protocol Extensions](#)".

[RFC2119] Bradner, S., "Key words for use in RFCs to Indicate Requirement Levels", BCP 14, RFC 2119, March 1997, <http://www.rfc-editor.org/rfc/rfc2119.txt>

[RFC4122] Leach, P., Mealling, M., and Salz, R., "A Universally Unique Identifier (UUID) URN Namespace", RFC 4122, July 2005, <http://www.ietf.org/rfc/rfc4122.txt>

1.2.2 Informative References

[MS-GLOS] Microsoft Corporation, "[Windows Protocols Master Glossary](#)".

1.3 Overview

Windows Deployment Services (WDS) Control Protocol is a generic client/server protocol which is used to invoke services provided by **Service Providers** in WDS Server. The WDS Control Protocol is a simple protocol with no state shared across multiple calls. Each call is considered one complete request.

A typical service invocation involves the following:

1. The client has already obtained the name of the WDS Server, **Endpoint GUID** for Service Provider and **OpCode** for the operation being invoked.
2. The client constructs a request by packaging required variables (as specified in section [2.2.1](#)), Endpoint GUID and OpCode.
3. The WDS Control Protocol sends the request to the server by using **RPC** interface (as specified in section [3](#)).
4. The WDS Server dispatches the request to the appropriate Service Provider based on Endpoint GUID.
5. Based on the Endpoint GUID and OpCode in the request, Service Provider will:
 - Validate that the client has appropriate rights to perform the operation.
 - Unpack the variables stored in the packet.
 - Perform the requested operation.
 - Package the results in pre-determined variables and complete the RPC request.

6. The client will check for success or failure of the request (as specified in section [3.1.4.2](#) and [3.2](#)).
7. Unpack the variables from the reply packet and process the results.

The following diagram shows a client making a request to the WDS Server:

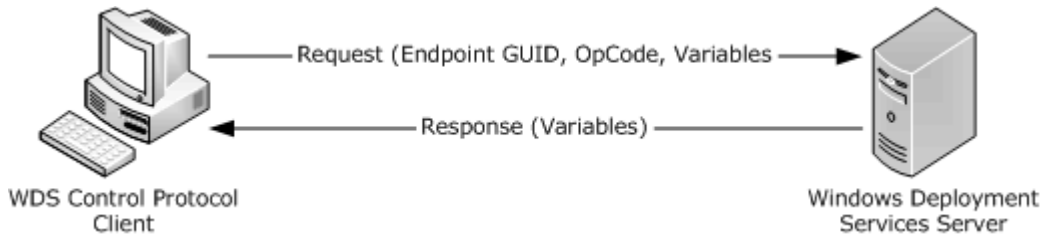


Figure 1: Client to server request

1.4 Relationship to Other Protocols

The WDS Control Protocol relies on RPC, as defined in [\[MS-RPCE\]](#), as the transport. It uses RPC to send the request to the WDS Server and receive replies.

The following diagram illustrates the relationship of WDS Control Protocol and how it relates to RPC:

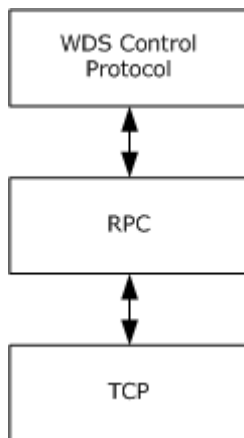


Figure 2: Relationship to other protocols

1.5 Prerequisites/Preconditions

This protocol is implemented on top of RPC and, as a result, has the prerequisites identified in [\[MS-RPCE\]](#).

The WDS Control Protocol assumes that a client has obtained the name of the server that supports this protocol, as well as an Endpoint GUID, security (authenticated or unauthenticated) requirements, an OpCode, variables required for each service the client intends to invoke, and variables used by these services to return the results.

1.6 Applicability Statement

This protocol is applicable when an application needs to invoke services provided by Service Providers residing on WDS Server.

1.7 Versioning and Capability Negotiation

This document covers versioning issues in the following areas:

- Supported Transports: This protocol uses single **RPC Protocol Sequence**.
- Protocol Versions: This protocol uses a single RPC interface.
- Security and Authentication Methods: Authentication and security are provided as specified in [\[MS-RPCE\]](#).
- Localization: This protocol acts as pass-thru for all strings with no support for localization built into the protocol.
- Capability Negotiation: The WDS Control Protocol does not support negotiation of the interface version to use. Instead, this protocol uses only the interface version number specified in the **IDL** for versioning and capability negotiation.

1.8 Vendor-Extensible Fields

Vendors can add new Service Providers by generating a new **Globally Unique Identifier (GUID)** as specified in [\[RFC4122\]](#), and exposing new OpCodes for the Service Providers.

This protocol uses Win32 error codes as defined in [\[MS-ERREF\]](#) section 2.2. Vendors SHOULD reuse those values with their indicated meaning. Choosing any other value runs the risk of a collision in the future.

1.9 Standards Assignments

Parameter	Value	Reference
RPC Interface UUID for WDS Control Protocol	1A927394-352E-4553-AE3F-7CF4AAFCA620	[C706] section A.2.5

2 Messages

2.1 Transport

All implementations MUST support RPC over TCP with **dynamic endpoints**.

The protocol MUST use the following **UUID**: 1A927394-352E-4553-AE3F-7CF4AAFCA620.

WDS Control Protocol uses RPC to transport the request packet from client to WDS Server and to transport the reply packet back to the client.

2.1.1 Server Security Settings

The WDS Control Protocol uses Security Service Provider (SSP) security provided by RPC as specified in [\[MS-RPCE\]](#) for sessions. The server SHOULD register the following SSPs, as supported **security providers**:

- RPC_C_AUTHN_GSS_NEGOTIATE
- RPC_C_AUTHN_GSS_KERBEROS
- RPC_C_AUTHN_WINNT

The WDS Server MUST allow authenticated and unauthenticated access to RPC clients. The WDS Server SHOULD support the maximum number of concurrent calls supported by RPC, as specified in [\[MS-RPCE\]](#) section 3.3.1.5.8.

2.1.2 Client Security Settings

The client MUST choose the security settings as required by the Service Provider for a given Endpoint GUID. An Endpoint GUID is a unique **GUID** used to identify a set of RPC services provided by a **Service Provider** that are grouped together as a relevant whole. All services under an Endpoint GUID for a Service Provider share the same security requirements. A Service Provider MAY expose multiple Endpoint GUIDs and each MAY have different security requirements.

The WDS Control Protocol RPC client MUST use SSP security provided by RPC as specified in [\[MS-RPCE\]](#) when invoking a service of a Service Provider that requires authenticated clients for the Endpoint GUID. A client SHOULD authenticate using RPC_C_AUTHN_GSS_NEGOTIATE.

A client communicating to WDS Server using authentication MUST use RPC_C_AUTHN_LEVEL_PKT_PRIVACY. An unauthenticated client SHOULD use RPC_AUTHN_LEVEL_NONE.

2.1.3 RPC as Transport

WDS Control Protocol uses RPC to transport a packet to the WDS Server. The request packet acts as the input parameter for the RPC function call. The reply packet from WDS Server is transported back to the client as an output parameter of the RPC function call.

2.2 Common Data Types

The base types used by the WDS Control Protocol are defined as the RPC base types. Additional data types are specified in [\[C706\]](#) and [\[MS-RPCE\]](#).

2.2.1 Messages

The following diagram illustrates the overall structure of request and reply packets.

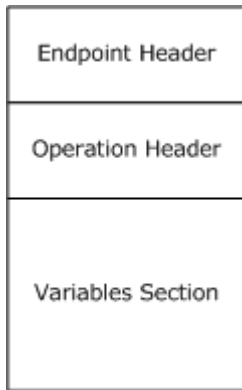


Figure 3: Overall packet structure

The Endpoint Header is defined in section [2.2.1.1](#) and specifies the target Endpoint GUID.

The Operation Header is defined in section [2.2.1.2](#). For request packets, this header specifies the target operation (OpCode) to perform. For reply packets, this header specifies the results of the operation.

The Variables Section is defined in section [2.2.1.3](#). For request packets, this section MUST specify the variables required by the service being invoked on the WDS Server. For reply packets, this section MUST specify the variables as expected by the client for the service invoked on the WDS Server.

All multibyte values specified in this document are in little-endian format unless specified otherwise.

2.2.1.1 Endpoint Header

The **Endpoint** Header is defined as follows:

0	1	2	3	4	5	6	7	8	9	10	11	12	13	14	15	16	17	18	19	20	21	22	23	24	25	26	27	28	29	30	31
Size-Of-Header																Version															
Packet-Size																															
Endpoint-GUID																															
...																															
...																															
...																															

Reserved
...
...
...

Size-Of-Header (2 bytes): MUST be set to the size of header in bytes, which is 0x0028.

Version (2 bytes): MUST be set to 0x0100.

Packet-Size (4 bytes): MUST be set to the number of bytes being transmitted for the packet. It MUST be the arithmetic sum of the sizes in bytes of Endpoint Header, Operation Header, and Variables Section.

Endpoint-GUID (16 bytes): MUST be set to the Endpoint GUID, as specified in [\[MS-DTYP\]](#) section 2.3.4.2, of the Service Provider, which provides the service to be invoked.

Reserved (16 bytes): MUST be set to zeros.

2.2.1.2 Operation Header

The Operation Header is defined as follows:

0	1	2	3	4	5	6	7	8	9	10	11	12	13	14	15	16	17	18	19	20	21	22	23	24	25	26	27	28	29	30	31
Packet-Size																															
Version																Packet-Type								Padding1							
OpCode-ErrorCode																															
Variable-Count																															

Packet-Size (4 bytes): MUST be set to the arithmetic addition of the sizes in bytes of the Operation Header and Variables Section.

Version (2 bytes): MUST be set to 0x0100.

Packet-Type (1 byte): SHOULD be set to value as defined in section [2.2.1.2.1](#).

Padding1 (1 byte): Padding MAY be set to zero and MUST be ignored by receiver.

OpCode-ErrorCode (4 bytes): For request packets, this field MUST be set to the OpCode for the service being invoked on the WDS Server. The Endpoint GUID combined with the OpCode uniquely identifies the service to be invoked on the WDS Server. For reply packets, this field specifies the error code for the invoked service. Section [3.1.4.2](#) specifies in detail how operation results are communicated to the client.

Variable-Count (4 bytes): MUST set to the number of variables in the Variables Section.

2.2.1.2.1 Packet Type

The Packet Type field in the Operation Header SHOULD be set to the value in the following table. The receiver MAY validate the Packet Type before accepting the packet. <1>

Packet Type	Description
WDSOPL_PACKET_REQUEST 0x01	The client SHOULD set this value for all request packets. WDS Server MAY validate the packet type before accepting the packet.
WDSOPL_PACKET_REPLY 0x02	The reply packet from WDS Server SHOULD set the packet type to this value. The client SHOULD NOT reject a packet if the packet type is not properly set.

2.2.1.3 Variables Section

The Variables Section in the request packet is used to specify parameters required by the service being invoked on WDS Server. In reply packets from WDS Server, the variables are used to communicate and provide output of the operation performed by Service Provider on WDS Server. The count of variables in the Variables Section MUST match the count of variables specified in the Operation Header. Each variable is defined using Variable Description Block as defined in section 2.2.1.3.1.

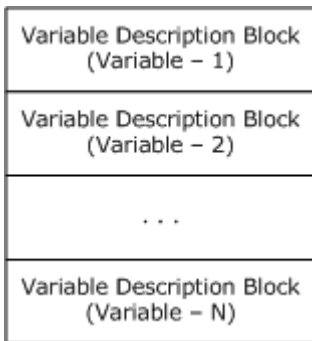
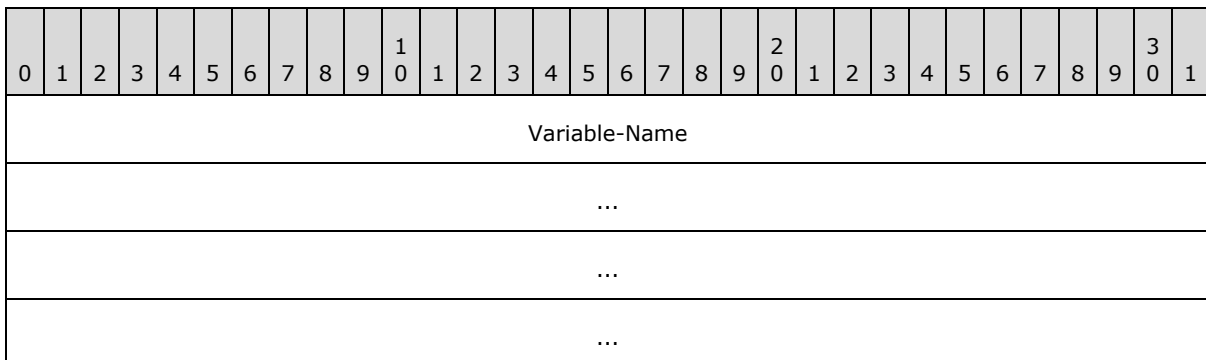


Figure 4: Variables section

2.2.1.3.1 Variable Description Block

The Variable Description Block is defined as follows:



...	
...	
...	
...	
(Variable-Name cont'd for 8 rows)	
...	Padding1
Variable-Type	
Value-Length	
Array-Size	
Variable-Value (variable)	
...	
Padding_end (variable)	
...	

Variable-Name (66 bytes): Specifies the name of the variable as a Unicode string. The variable name MUST end with a null character. Duplicate variable names MUST not be allowed. **Variable-Name** MUST be treated as case-insensitive.

Padding1 (2 bytes): Padding MAY be set to zero and MUST be ignored by receiver.

Variable-Type (4 bytes): MUST be set to the data type of the variable as specified in section [2.2.1.3.2](#).

Value-Length (4 bytes): This field MUST be set as specified in section [2.2.1.3.3](#).

Array-Size (4 bytes): This field MUST be set as specified in section [2.2.1.3.3](#).

Variable-Value (variable): Specifies the value for the variable.

Padding_end (variable): Padding MAY be set to zero and MUST be ignored by receiver. Padding_end size must be such that the total size (in bytes) of the Variable Description Block is evenly divisible by 16.

2.2.1.3.2 Variable Types

WDS Control Protocol supports multiple data types. The identifier for each data type is a four bytes unsigned numeric value. The identifier for data type consists of the base data type and set of optional type modifiers.

0	1	2	3	4	5	6	7	8	9	0	1	2	3	4	5	6	7	8	9	0	1	2	3	4	5	6	7	8	9	0	1
Base Type																Type Modifier															

If a data type does not have a type modifier then the type modifier MUST be set to zero.

2.2.1.3.2.1 Base Types

WDS Control Protocol supports following base data types:

Base Type	Size of Value in Bytes	Fixed Length?	Description
WDS CPL_VAR_BYTE 0x0001	1	Yes	Single byte unsigned value
WDS CPL_VAR_USHORT 0x0002	2	Yes	Specifies two byte unsigned numeric value
WDS CPL_VAR_ULONG 0x0004	4	Yes	Specifies four byte unsigned numeric value
WDS CPL_VAR_ULONG64 0x0008	8	Yes	Specifies an eight byte unsigned numeric value
WDS CPL_VAR_STRING 0x0010	Variable length	No	Specifies a CHAR ([MS-DTYP] section 2.2.7) string which MUST be terminated by a zero (null) character.
WDS CPL_VAR_WSTRING 0x0020	Variable length	No	Specifies a UNICODE ([MS-DTYP] section 2.2.56) string which MUST be terminated by a zero (null) character.
WDS CPL_VAR_BLOB 0x0040	Variable length	No	Specifies variable length stream of bytes.

2.2.1.3.2.2 Type Modifiers

Each data type (as specified in section [2.2.1.3.2.1](#)) can have a type modifier associated with it. The following list specifies the list of available type modifiers:

Type Modifier	Description
WDS CPL_VAR_ARRAY 0x1000	Specifies that the value contains an array of base data type.

2.2.1.3.3 Variable Value Length

The count of bytes that hold the value for a variable in Variable Description Block are computed using the **Value-Length** and **Array-Size** fields of the Variable Description Block.

2.2.1.3.3.1 Variables without Type Modifiers

For data types without any type modifiers, the **Array-Size** field SHOULD be set to zero.

For fixed length data type the **Value-Length** field SHOULD be set to the size in bytes as specified in section [2.2.1.3.2.1](#).

For variable length data types the **Value-Length** field MUST specify the total number of bytes containing the value.

2.2.1.3.3.2 Variables with WDS_CPL_VAR_ARRAY Type Modifier

For fixed length data types the **Value-Length** field SHOULD be set to the size in bytes as specified in section [2.2.1.3.2.1](#).

For variable length data types the **Value-Length** field MUST specify the total number of bytes containing the value.

The **Array-Size** field MUST not be zero.

The total number of bytes that hold the value for a variable are obtained by arithmetic multiplication of **Value-Length** and **Array-Size**.

The individual elements of the array are accessed using a 0-based index with a maximum value for the index being (**Array-Size** - 1).

To access a value at a specified index, multiply the **Value-Length** by the index to obtain an offset into the **Variable-Value** field. The **Value-Length** field specifies the number of bytes to read at the derived offset in order to read the value at that index.

3 Protocol Details

3.1 Server Details

This section specifies the WDS Server Control Protocol behavior.

3.1.1 Abstract Data Model

This section describes a conceptual model for handling the WDS Control Protocol by a WDS Server. The described model is provided to explain how the protocol behaves. Implementations are not required to adhere to this model as long as their external behavior is consistent with that described in this document.

Global Server State: The global state of the server, set to one of the following values:

- Loading: the WDS Server is loading and initializing the Service Providers.
- Running: WDS Server has loaded and initialized all Service Providers and serving client requests.
- Stopping: WDS Server is shutting down.
- Service Provider: A Service Provider is a module that is loaded by WDS Server based on configuration. A Service Provider registers the Endpoint GUID with the WDS Server so that incoming requests can be routed.
- Configuration: A list of Service Providers that are to be loaded by WDS Server during initialization.
- Endpoint GUID: An Endpoint GUID is registered by a Service Provider with the WDS Server. The details provided by a Service Provider when registering an Endpoint GUID can be found in section [3.1.3.1](#).
- OpCode: An OpCode uniquely identifies a service offered by a Service Provider under a registered Endpoint GUID.

3.1.1.1 Configuration

The list of names used as (name, value) pair in WDS Server Configuration information are given below:

ServiceProviderList: A list of modules that will be loaded during WDS Server initialization. Each module represents a Service Provider.

3.1.2 Timers

No timers are required for WDS Server beyond those used internally by RPC to implement resiliency to network outages, as specified in [\[MS-RPCE\]](#) section 3.2.3.2.1.

3.1.3 Initialization

At initialization time, WDS Server MUST initialize all registered Service Providers and RPC server.

3.1.3.1 Service Providers Initialization

WDS Server: MUST read the configuration (as defined in section [3.1.1.1](#)) and initialize each Service Provider. Each Service Provider MUST register all Endpoint GUIDs it is to offer clients using WDS Server. Each registered Endpoint GUID MUST include the following configuration information:

GUID: A 128 bit value, which uniquely identifies that Endpoint GUID.

SecurityAccess: MUST specify if WDS Server allows authenticated and/or unauthenticated clients to invoke services offered by Service Provider under this Endpoint GUID.

3.1.3.2 RPC Server Initialization

The WDS Server Control Provider server MUST register the RPC interface and begin listening on the **RPC transport** as specified in section [2.1](#).

3.1.4 Message Processing Events and Sequencing Rules

Methods in RPC Opnum Order

Method	Description
WdsRpcMessage	This function is used to transport the request packet to the server and to bring the reply packet. Opnum: 0

3.1.4.1 WdsRpcMessage (opnum 0)

The **WdsRpcMessage (opnum 0)** method sends the request packet to the server and returns the corresponding reply packet.

```
unsigned long WdsRpcMessage(  
    handle_t hBinding,  
    [in] unsigned long uRequestPacketSize,  
    [in, size_is(uRequestPacketSize)]  
    byte bRequestPacket[],  
    [out] unsigned long* puReplyPacketSize,  
    [out, size_is(*puReplyPacketSize)]  
    byte** pbReplyPacket  
);
```

hBinding: The RPC binding handle that the client established when it connected to the server.

uRequestPacketSize: The client MUST pass the total size of request packet in bytes.

bRequestPacket: A pointer to the request packet. The packet MUST be constructed as specified in section [2.2.1](#).

puReplyPacketSize: The WDS Server MUST set this to the total size of the reply packet in bytes.

pbReplyPacket: The WDS Server MUST set this to the reply packet. The reply packet MUST be constructed as specified in section [2.2.1](#).

Return Values: The method MUST return ERROR_SUCCESS (0x00000000) on success or a non-zero Win32 error code value if an error occurred.

When processing this call, the WDS Server MUST do the following:

- If the Global Server State is not Running (section [3.1](#)), the server MUST return a failure.
- Server MUST validate the Endpoint Header (section [2.2.1.1](#)) and extract the Endpoint GUID, and if invalid, the server MUST return a failure.
- Server MUST search through the list of registered Endpoint GUIDs to match the Endpoint GUID specified in the Endpoint Header. If no match is found, the server MUST return a failure.
- Server MUST query the **authentication level** of the RPC call and validate as follows:
 - If registered Endpoint GUID allows both authenticated and unauthenticated clients, then continue to next step.
 - If the registered Endpoint GUID requires an authenticated client and client RPC call is unauthenticated, the server MUST return a failure.
 - If the registered Endpoint GUID requires an unauthenticated client and the client RPC call is authenticated, the server MUST return a failure.
 - For authenticated clients, server MUST enforce RPC_C_AUTHN_LEVEL_PKT_PRIVACY and return failure if client is not using it.
- Server MUST dispatch the request packet to the Service Provider that registered the Endpoint GUID.
- Service Provider MUST validate the Operation Header (section [2.2.1.2](#)) and extract the OpCode. The server MUST return failure if invalid.
- Service Provider MUST validate that it offers the requested OpCode under the registered Endpoint, and if invalid the server MUST return failure.
- Service Provider MUST validate and extract all variables from the Variables Section (section [2.2.1.3](#)), and return failure if invalid.
- For the requested OpCode, Service Provider MUST validate that all required variables are present.
- Service Provider MAY validate that the client is authorized to perform the requested operation.
- Service Provider MUST perform the requested operation as identified by the Endpoint GUID and OpCode from the request packet. If an error is encountered, it MUST be handled as specified in section [3.1.4.2](#).
- Service Provider MUST construct the reply packet (section [2.2.1](#)) and hand it to WDS Server.
- WDS Server MUST complete the RPC call setting the output parameters for the function to the packet provided by Service Provider.

3.1.4.2 Failure Cases

WDS Server MUST return a failure status for the RPC call if it encounters any failure before passing the request to a Service Provider, or after the reply packet has been handed to WDS Server by a Service Provider.

Service Providers SHOULD report failures by instructing the WDS Server to return the appropriate failure code for the RPC call.

Service Providers MAY construct a reply packet and set the failure error code in the Operation Header (section [2.2.1.2](#)). In this case, the RPC call succeeds, but the OpCode-ErrorCode field in the Operation Header MUST contain the appropriate error code. [<2>](#)

3.1.5 Timer Events

None.

3.1.6 Other Local Events

None.

3.2 Client Details

3.2.1 Abstract Data Model

This section describes a conceptual model of possible handling of WDS Control Protocol by clients to participate in this protocol. The described model is provided to facilitate the explanation of how the protocol behaves. This document does not mandate that implementations adhere to this model as long as their external behavior is consistent with that described in this document.

3.2.2 Timers

The clients MAY request a timeout for the operation when using WDS Control Protocol. If a timeout is specified and a request to WDS Server does not complete before the timeout, then WDS Control Protocol MUST cancel the RPC call and return appropriate failure.

If client does not request a timeout, then WDS Control Protocol requires no timers beyond those used internally by RPC to implement resiliency to network outages, as specified in [\[MS-RPCE\]](#) section 3.2.3.2.1.

3.2.3 Initialization

None.

3.2.4 Message Processing Events and Sequencing Rules

The client MUST provide information to WDS Control Protocol to uniquely identify the service to be invoked. It MUST include all variables required by service being invoked. The following is the list of information to be provided:

- Server name or IP address
- Endpoint GUID
- Security (authenticated or unauthenticated call)
- OpCode
- Required variables

The client MAY also specify a timeout for the RPC call.

When processing the request, the client MUST follow these steps:

1. Construct the request packet as specified in section [2.2.1](#).
2. Set the authentication level for the RPC call (either authenticated or unauthenticated).
3. Set the timeout for RPC call if one is specified by client.
4. Send request to server as specified in section [3.1.4.1](#).

If call executes and returns with success code of ERROR_SUCCESS (0x00000000), the WDS Control Protocol MUST do the following:

1. Validate the Endpoint Header (section [2.2.1.1](#)), Operation Header (section [2.2.1.2](#)) and Variables Section (section [2.2.1.3](#)).
2. The Endpoint GUID in the Endpoint Header MUST match the Endpoint GUID specified by client.
3. If the **OpCode-ErrorCode** field in the Operation Header is not set to error code ERROR_SUCCESS (0x00000000), the WDS Control Protocol MAY return the same error code to the client.

3.2.5 Timer Events

The timer event is start just before the RPC call is initiated. If the timer expires and the RPC call has still not completed, the WDS Control Protocol MUST cancel the RPC call and return the appropriate error code to the client.

3.2.6 Other Local Events

None.

4 Protocol Examples

The following diagram illustrates a client invoking a service provided by Service Provider on a WDS Server:

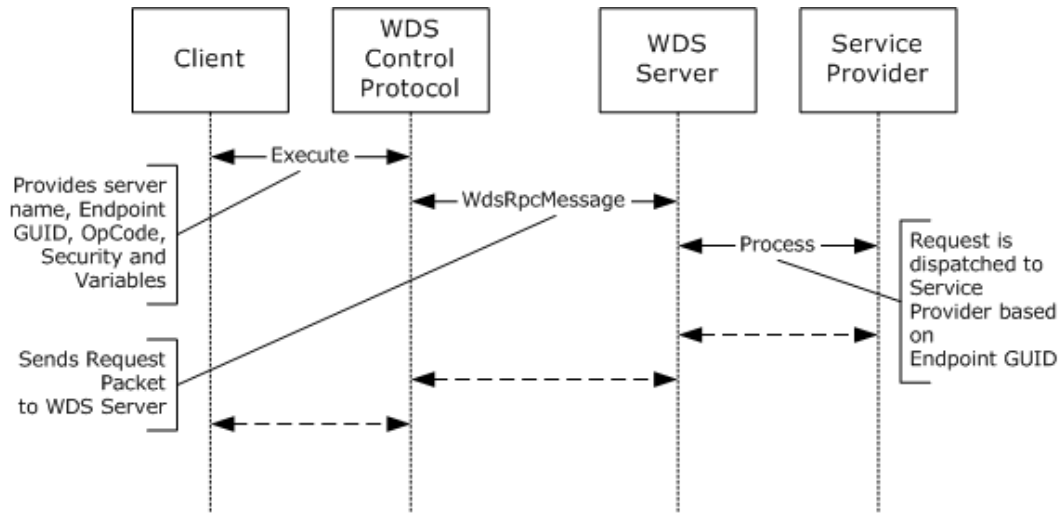


Figure 5: Client invoking a service

5 Security

5.1 Security Considerations for Implementers

None.

5.2 Index of Security Parameters

None.

6 Appendix A: Full IDL

For ease of implementation, the full IDL is provided below, where "ms-dtyp.idl" refers to the IDL found in [\[MS-DTYP\] Appendix A](#).

```
import "ms-dtyp.idl";

[
    uuid(1A927394-352E-4553-AE3F-7CF4AAFC620),
    version(1.0)
]
interface WdsRpcInterface
{
    unsigned long
    WdsRpcMessage(
        handle_t hBinding,
        [in, size_is(uRequestPacketSize)] byte bRequestPacket[],
        [out] unsigned long* puReplyPacketSize,
        [out, size_is(*puReplyPacketSize)] byte** pbReplyPacket
    );
}
```


7 Appendix B: Product Behavior

The information in this specification is applicable to the following Microsoft products or supplemental software. References to product versions include released service packs:

- Windows Server 2003 operating system with Service Pack 1 (SP1)
- Windows Server 2003 operating system with Service Pack 2 (SP2)
- Windows Server 2008 operating system
- Windows 7 operating system
- Windows 8 operating system
- Windows 8.1 operating system

Exceptions, if any, are noted below. If a service pack or Quick Fix Engineering (QFE) number appears with the product version, behavior changed in that service pack or QFE. The new behavior also applies to subsequent service packs of the product unless otherwise specified. If a product edition appears with the product version, behavior is different in that product edition.

Unless otherwise specified, any statement of optional behavior in this specification that is prescribed using the terms SHOULD or SHOULD NOT implies product behavior in accordance with the SHOULD or SHOULD NOT prescription. Unless otherwise specified, the term MAY implies that the product does not follow the prescription.

[<1> Section 2.2.1.2.1:](#) The PacketType field is not properly set in the reply packets.

[<2> Section 3.1.4.2:](#) When an operation fails, some operations may set the OpCode-ErrorCode field to the error code of failure.

8 Change Tracking

This section identifies changes that were made to the [MS-WDSC] protocol document between the January 2013 and August 2013 releases. Changes are classified as New, Major, Minor, Editorial, or No change.

The revision class **New** means that a new document is being released.

The revision class **Major** means that the technical content in the document was significantly revised. Major changes affect protocol interoperability or implementation. Examples of major changes are:

- A document revision that incorporates changes to interoperability requirements or functionality.
- An extensive rewrite, addition, or deletion of major portions of content.
- The removal of a document from the documentation set.
- Changes made for template compliance.

The revision class **Minor** means that the meaning of the technical content was clarified. Minor changes do not affect protocol interoperability or implementation. Examples of minor changes are updates to clarify ambiguity at the sentence, paragraph, or table level.

The revision class **Editorial** means that the language and formatting in the technical content was changed. Editorial changes apply to grammatical, formatting, and style issues.

The revision class **No change** means that no new technical or language changes were introduced. The technical content of the document is identical to the last released version, but minor editorial and formatting changes, as well as updates to the header and footer information, and to the revision summary, may have been made.

Major and minor changes can be described further using the following change types:

- New content added.
- Content updated.
- Content removed.
- New product behavior note added.
- Product behavior note updated.
- Product behavior note removed.
- New protocol syntax added.
- Protocol syntax updated.
- Protocol syntax removed.
- New content added due to protocol revision.
- Content updated due to protocol revision.
- Content removed due to protocol revision.
- New protocol syntax added due to protocol revision.

- Protocol syntax updated due to protocol revision.
- Protocol syntax removed due to protocol revision.
- New content added for template compliance.
- Content updated for template compliance.
- Content removed for template compliance.
- Obsolete document removed.

Editorial changes are always classified with the change type **Editorially updated**.

Some important terms used in the change type descriptions are defined as follows:

- **Protocol syntax** refers to data elements (such as packets, structures, enumerations, and methods) as well as interfaces.
- **Protocol revision** refers to changes made to a protocol that affect the bits that are sent over the wire.

The changes made to this document are listed in the following table. For more information, please contact protocol@microsoft.com.

Section	Tracking number (if applicable) and description	Major change (Y or N)	Change type
Z Appendix B: Product Behavior	Modified this section to include references to Windows 8.1 operating system.	Y	Content updated.

9 Index

A

Abstract data model
[client](#) 20
server
 [configuration](#) 17
 [overview](#) 17
[Applicability](#) 8

C

[Capability negotiation](#) 9
[Change tracking](#) 26
Client
 [abstract data model](#) 20
 [initialization](#) 20
 [local events](#) 21
 [message processing](#) 20
 [security settings](#) 10
 [sequencing rules](#) 20
 [timer events](#) 21
 [timers](#) 20
[Common data types](#) 10

D

Data model - abstract
 [client](#) 20
 server
 [configuration](#) 17
 [overview](#) 17
[Data types](#) 10

E

[Endpoint Header](#) 11
[Endpoint_Header_packet](#) 11
[Examples - overview](#) 22

F

[Failure cases](#) 19
[Fields - vendor-extensible](#) 9
[Full IDL](#) 24

G

[Glossary](#) 6

I

[IDL](#) 24
[Implementer - security considerations](#) 23
[Index of security parameters](#) 23
[Informative references](#) 7
Initialization
 [client](#) 20
 server

[overview](#) 17
 [RPC server initialization](#) 18
 [Service Providers initialization](#) 18
[Introduction](#) 6

L

Local events
 [client](#) 21
 [server](#) 20

M

Message processing
 [client](#) 20
 server
 [failure cases](#) 19
 [overview](#) 18
 [WdsRpcMessage \(opnum 0\)](#) 18
Messages
 [data types](#) 10
 [Endpoint Header](#) 11
 [Operation Header](#) 12
 [overview](#) 11
 transport
 [client security settings](#) 10
 [overview](#) 10
 [RPC](#) 10
 [server security settings](#) 10
 [Variables Section](#) 13

N

[Normative references](#) 7

O

[Operation Header](#) 12
[Operation_Header_packet](#) 12
[Overview](#) 7

P

[Parameters - security index](#) 23
[Preconditions](#) 8
[Prerequisites](#) 8
[Product behavior](#) 25

R

References
 [informative](#) 7
 [normative](#) 7
[Relationship to other protocols](#) 8

S

Security

- [implementer considerations](#) 23
- [parameter index](#) 23
- [settings - client](#) 10
- [settings - server](#) 10
- Sequencing rules
 - [client](#) 20
 - server
 - [failure cases](#) 19
 - [overview](#) 18
 - [WdsRpcMessage \(opnum 0\)](#) 18
- Server
 - abstract data model
 - [configuration](#) 17
 - [overview](#) 17
 - initialization
 - [overview](#) 17
 - [RPC server](#) 18
 - [Service Providers](#) 18
 - [local events](#) 20
 - message processing
 - [failure cases](#) 19
 - [overview](#) 18
 - [WdsRpcMessage \(opnum 0\)](#) 18
 - [overview](#) 17
 - [security settings](#) 10
 - sequencing rules
 - [failure cases](#) 19
 - [overview](#) 18
 - [WdsRpcMessage \(opnum 0\)](#) 18
 - [timer events](#) 20
 - [timers](#) 17
- [Standards assignments](#) 9

T

- Timer events
 - [client](#) 21
 - [server](#) 20
- Timers
 - [client](#) 20
 - [server](#) 17
- [Tracking changes](#) 26
- Transport
 - [client security settings](#) 10
 - [overview](#) 10
 - [RPC](#) 10
 - [server security settings](#) 10

V

- [Variable Description Block packet](#) 13
- [Variables Section](#) 13
- [Vendor-extensible fields](#) 9
- [Versioning](#) 9

W

- [WdsRpcMessage \(opnum 0\)](#) 18
- [WdsRpcMessage method](#) 18