

# [MS-RDPBCGR]: Remote Desktop Protocol: Basic Connectivity and Graphics Remoting

This topic lists the Errata found in [MS-RDPBCGR] since it was last published. Since this topic is updated frequently, we recommend that you subscribe to these RSS or Atom feeds to receive update notifications.



Errata are subject to the same terms as the Open Specifications documentation referenced.

To view a PDF file of the errata for the previous versions of this document, see the following ERRATA Archives:

October 16, 2015 - [Download](#)

June 30, 2015 - [Download](#)

July 18, 2016 - [Download](#)

March 20, 2017 - [Download](#)

June 1, 2017 - [Download](#)

December 1, 2017 - [Download](#)

March 16, 2018 - [Download](#)

September 12, 2018 - [Download](#)

March 13, 2019 - [Download](#)

September 23, 2019 - [Download](#)

March 4, 2020 - [Download](#)

Errata below are for Protocol Document Version [V52.0 – 2020/03/04](#).

Errata Published*	Description				
2020/07/20	<p>In Section 2.2.10.1.1.4.1.1, Logon Errors Info (TS_LOGON_ERRORS_INFO), added the LOGON_MSG_SESSION_BUSY_OPTIONS notification type.</p> <p>Changed from:</p> <p>ErrorNotificationType (4 bytes): A 32-bit, unsigned integer that specifies an NTSTATUS value (see [ERRTRANS] for information about translating NTSTATUS error codes to usable text strings), or one of the following values.</p> <table border="1"><thead><tr><th>Value</th><th>Meaning</th></tr></thead><tbody><tr><td>LOGON_MSG_DISCONNECT_REFUSED 0xFFFFFFFF9</td><td>The "Disconnection Refused" dialog is being displayed by Winlogon. The session identifier is specified by the ErrorNotificationData field.</td></tr></tbody></table> <p>Changed to:</p>	Value	Meaning	LOGON_MSG_DISCONNECT_REFUSED 0xFFFFFFFF9	The "Disconnection Refused" dialog is being displayed by Winlogon. The session identifier is specified by the ErrorNotificationData field.
Value	Meaning				
LOGON_MSG_DISCONNECT_REFUSED 0xFFFFFFFF9	The "Disconnection Refused" dialog is being displayed by Winlogon. The session identifier is specified by the ErrorNotificationData field.				

Errata Published*	Description						
	<p>ErrorNotificationType (4 bytes): A 32-bit, unsigned integer that specifies an NTSTATUS value (see [ERRTRANS] for information about translating NTSTATUS error codes to usable text strings), or one of the following values.</p> <table border="1" data-bbox="399 310 1414 598"> <thead> <tr> <th data-bbox="399 310 865 363">Value</th> <th data-bbox="865 310 1414 363">Meaning</th> </tr> </thead> <tbody> <tr> <td data-bbox="399 363 865 464">LOGON_MSG_SESSION_BUSY_OPTIONS 0xFFFFFFFF8</td> <td data-bbox="865 363 1414 464">The "Session is Busy" dialog is being displayed by Winlogon. The session identifier is specified by the ErrorNotificationData field.</td> </tr> <tr> <td data-bbox="399 464 865 598">LOGON_MSG_DISCONNECT_REFUSED 0xFFFFFFFF9</td> <td data-bbox="865 464 1414 598">The "Disconnection Refused" dialog is being displayed by Winlogon. The session identifier is specified by the ErrorNotificationData field.</td> </tr> </tbody> </table>	Value	Meaning	LOGON_MSG_SESSION_BUSY_OPTIONS 0xFFFFFFFF8	The "Session is Busy" dialog is being displayed by Winlogon. The session identifier is specified by the ErrorNotificationData field.	LOGON_MSG_DISCONNECT_REFUSED 0xFFFFFFFF9	The "Disconnection Refused" dialog is being displayed by Winlogon. The session identifier is specified by the ErrorNotificationData field.
Value	Meaning						
LOGON_MSG_SESSION_BUSY_OPTIONS 0xFFFFFFFF8	The "Session is Busy" dialog is being displayed by Winlogon. The session identifier is specified by the ErrorNotificationData field.						
LOGON_MSG_DISCONNECT_REFUSED 0xFFFFFFFF9	The "Disconnection Refused" dialog is being displayed by Winlogon. The session identifier is specified by the ErrorNotificationData field.						
2020/07/06	<p>In Section 2.2.17.4, RDSTLS Authentication Response PDU, revised ResultCode description to match definition – 16-bit to 32-bit unsigned integer.</p> <p>Changed from:</p> <p>ResultCode (4 bytes): A 16-bit unsigned integer that specifies the user authentication result.</p> <p>Changed to:</p> <p>ResultCode (4 bytes): A 32-bit unsigned integer that specifies the user authentication result.</p> <p>In Section 4.1.3, Client MCS Connect Initial PDU with GCC Conference Create Request, revised comment for TS_UD_CS_CORE::connectionType.</p> <p>Changed from:</p> <pre data-bbox="431 1161 1109 1234">00 -&gt; TS_UD_CS_CORE::connectionType = 0 (not used as RNS_UD_CS_VALID_CONNECTION_TYPE not set) 00 -&gt; TS_UD_CS_CORE::padloctet</pre> <p>Changed to:</p> <pre data-bbox="431 1409 1097 1482">00 -&gt; TS_UD_CS_CORE::connectionType = 0 (ignored as RNS_UD_CS_VALID_CONNECTION_TYPE not set) 00 -&gt; TS_UD_CS_CORE::padloctet</pre> <p>In Section 4.1.14, Client Synchronize PDU, revised annotated dump to match revision made in section 2.2.17.4.</p> <p>Changed from:</p> <pre data-bbox="444 1745 1235 1768">00 01 -&gt;TS_SYNCHRONIZE_PDU::messageType = SYNMSGTYPE_SYNC (1)</pre>						

Errata Published*	Description
	<pre>ea 03 -&gt;TS_SYNCHRONIZE_PDU::targetUser = 0x03ea</pre> <p>Changed to:</p> <pre>01 00 -&gt;TS_SYNCHRONIZE_PDU::messageType = SYNCMSGTYPE_SYNC (1) ea 03 -&gt;TS_SYNCHRONIZE_PDU::targetUser = 0x03ea</pre>
2020/07/06	<p>In Section 4.1.12, Server Demand Active PDU, revised annotated dump – pad1octet to drawingFlags &amp; pad2octetsB to orderSupportExFlags.</p> <p>Changed from:</p> <pre>00 -&gt; TS_BITMAP_CAPABILITYSET::highColorFlags = 0 00 -&gt; TS_BITMAP_CAPABILITYSET::pad1octet 01 00 -&gt; TS_BITMAP_CAPABILITYSET::multipleRectangleSupport = TRUE 00 00 -&gt; TS_BITMAP_CAPABILITYSET::pad2octetsB</pre> <p>Order Capability Set (88 bytes)</p> <p>Changed to:</p> <pre>00 -&gt; TS_BITMAP_CAPABILITYSET::highColorFlags = 0 00 -&gt; TS_BITMAP_CAPABILITYSET::drawingFlags 01 00 -&gt; TS_BITMAP_CAPABILITYSET::multipleRectangleSupport = TRUE 00 00 -&gt; TS_BITMAP_CAPABILITYSET::pad2octetsB</pre> <p>Order Capability Set (88 bytes)</p> <p>In that same section, changed from:</p> <pre>a1 06 -&gt; TS_ORDER_CAPABILITYSET::textFlags = 0x06a1 00 00 -&gt; TS_ORDER_CAPABILITYSET::pad2octetsB 40 42 0f 00 -&gt; TS_ORDER_CAPABILITYSET::pad4octetsB 40 42 0f 00 -&gt; TS_ORDER_CAPABILITYSET::desktopSaveSize = 0xf4240 = 1000000</pre> <p>Changed to:</p> <pre>a1 06 -&gt; TS_ORDER_CAPABILITYSET::textFlags = 0x06a1 00 00 -&gt; TS_ORDER_CAPABILITYSET::orderSupportExFlags 40 42 0f 00 -&gt; TS_ORDER_CAPABILITYSET::pad4octetsB</pre>

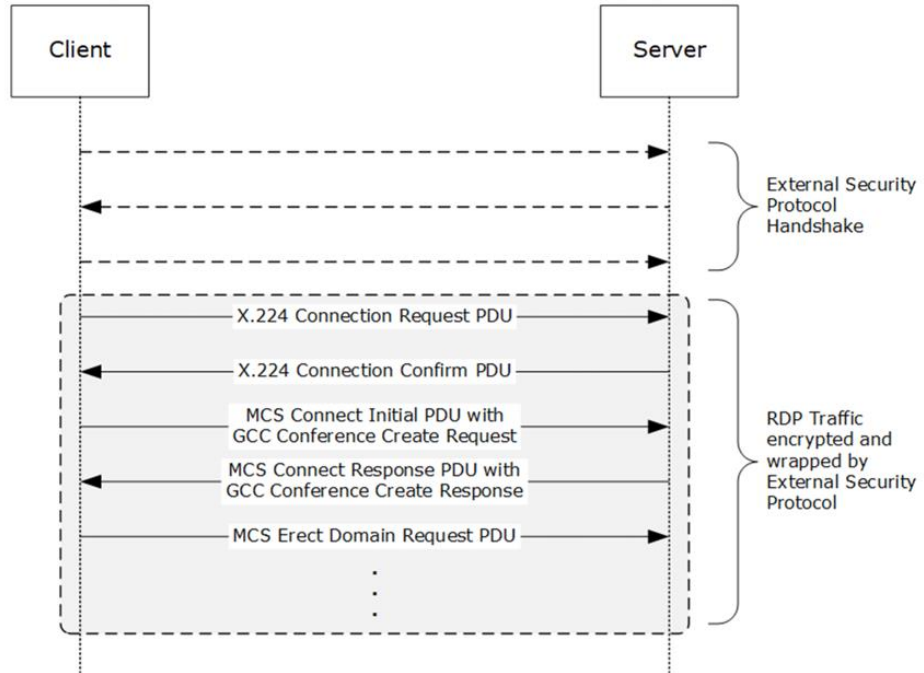
Errata Published*	Description
	<pre> 40 42 0f 00 -&gt; TS_ORDER_CAPABILITYSET::desktopSaveSize = 0xf4240 = 1000000  In Section 4.1.13, Client Confirm Active PDU, revised annotated dump – pad2octets to pad2Octets &amp; pad1octet to drawingFlags &amp; pad2octetsB to orderSupportExFlags.  Changed from:  4d 53 54 53 43 00 -&gt; TS_CONFIRM_ACTIVE_PDU::sourceDescriptor = "MSTSC"  12 00 -&gt; TS_CONFIRM_ACTIVE_PDU::numberCapabilities = 18 00 00 -&gt; TS_CONFIRM_ACTIVE_PDU::pad2octets  General Capability Set (24 bytes)  Changed to:  4d 53 54 53 43 00 -&gt; TS_CONFIRM_ACTIVE_PDU::sourceDescriptor = "MSTSC"  12 00 -&gt; TS_CONFIRM_ACTIVE_PDU::numberCapabilities = 18 00 00 -&gt; TS_CONFIRM_ACTIVE_PDU::pad2Octets  General Capability Set (24 bytes)  In that same section, changed from:  00 -&gt; TS_BITMAP_CAPABILITYSET::highColorFlags = 0 00 -&gt; TS_BITMAP_CAPABILITYSET::pad1octet 01 00 -&gt; TS_BITMAP_CAPABILITYSET::multipleRectangleSupport = TRUE 00 00 -&gt; TS_BITMAP_CAPABILITYSET::pad2octetsB  Order Capability Set (88 bytes)  Changed to:  00 -&gt; TS_BITMAP_CAPABILITYSET::highColorFlags = 0 00 -&gt; TS_BITMAP_CAPABILITYSET::drawingFlags 01 00 -&gt; TS_BITMAP_CAPABILITYSET::multipleRectangleSupport = TRUE 00 00 -&gt; TS_BITMAP_CAPABILITYSET::pad2octetsB  Order Capability Set (88 bytes)  Changed from:  TS_TEXTFLAGS_ALLOWDELTA_XSIM   TS_TEXTFLAGS_CHECKFONTASPECT  00 00 -&gt; TS_ORDER_CAPABILITYSET::pad2octetsB </pre>

Errata Published*	Description
	<pre> 00 00 00 00 -&gt; TS_ORDER_CAPABILITYSET::pad4octetsB 00 84 03 00 -&gt; TS_ORDER_CAPABILITYSET::desktopSaveSize = 0x38400 = 230400  Changed to:      TS_TEXTFLAGS_CHECKFONTASPECT  00 00 -&gt; TS_ORDER_CAPABILITYSET::orderSupportExFlags 00 00 00 00 -&gt; TS_ORDER_CAPABILITYSET::pad4octetsB 00 84 03 00 -&gt; TS_ORDER_CAPABILITYSET::desktopSaveSize = 0x38400 = 230400  In Section 4.1.18, Client Font List PDU, revised annotated dump – numberEntries to numberFonts &amp; totalNumEntries to totalNumFonts &amp; added a couple of lines.  Changed from:      00 00 -&gt; TS_SHAREDATAHEADER::compressedLength = 0      00 00 -&gt; TS_FONT_LIST_PDU::numberEntries = 0     00 00 -&gt; TS_FONT_LIST_PDU::totalNumEntries = 0     03 00 -&gt; TS_FONT_LIST_PDU::listFlags = 0x0003 = 0x0002   0x0001 =     FONTLIST_LAST   FONTLIST_FIRST     32 00 -&gt; TS_FONT_LIST_PDU::entrySize = 0x0032 = 50 bytes  Changed to:      00 00 -&gt; TS_SHAREDATAHEADER::compressedLength = 0      00 00 -&gt; TS_FONT_LIST_PDU::numberFonts = 0     00 00 -&gt; TS_FONT_LIST_PDU::totalNumFonts = 0      03 00 -&gt; TS_FONT_LIST_PDU::listFlags = 0x0003     0x0003     = 0x0002   0x0001     FONTLIST_LAST   FONTLIST_FIRST      32 00 -&gt; TS_FONT_LIST_PDU::entrySize = 0x0032 = 50 bytes  In Section 4.4, Annotated Server-to-Client Virtual Channel PUD, revised HEADER to HEADER1.  Changed from:      01 00 -&gt; TS_SECURITY_HEADER::flagsHi - ignored as flags field does     not contain SEC_FLAGSHI_VALID (0x8000)     47 bd eb cb 29 51 ae 0a -&gt; TS_SECURITY_HEADER::dataSignature      f6 07 33 ce fc a5 f7 09 de 67 4e a3 2a 2c 38 29 -&gt; Encrypted static </pre>

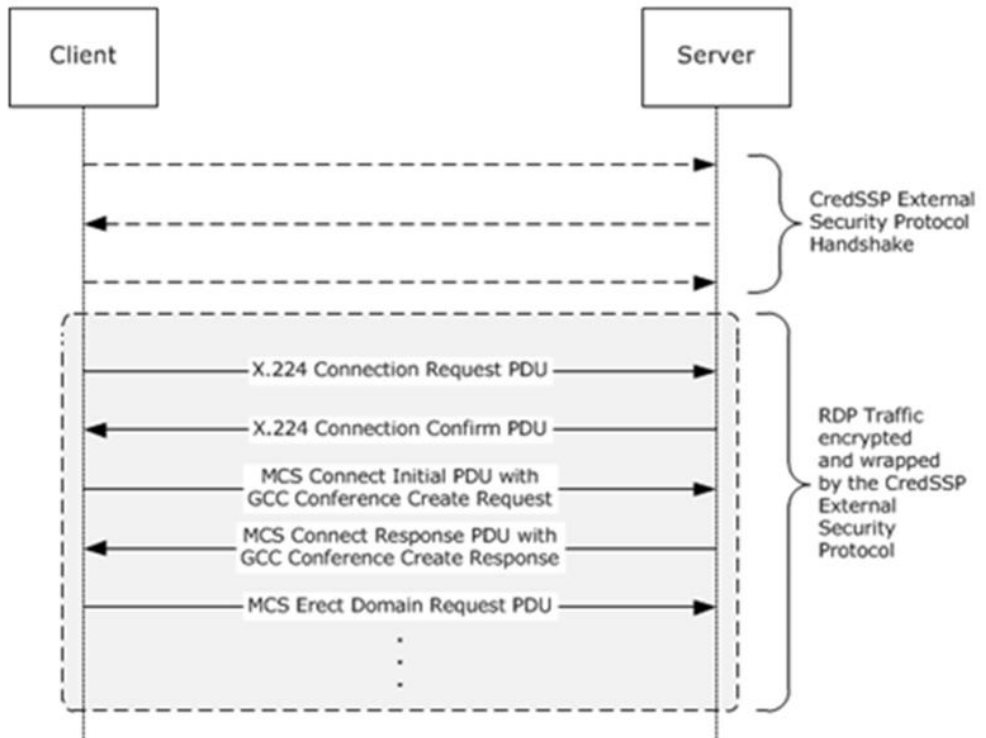
Errata Published*	Description
	<p>virtual channel data</p> <p>Changed to:</p> <pre>01 00 -&gt; TS_SECURITY_HEADER::flagsHi - ignored as flags field does not contain SEC_FLAGSHI_VALID (0x8000) 47 bd eb cb 29 51 ae 0a -&gt; TS_SECURITY_HEADER1::dataSignature  f6 07 33 ce fc a5 f7 09 de 67 4e a3 2a 2c 38 29 -&gt; Encrypted static virtual channel data</pre> <p>In Section 4.5, Annotated Standard Security Server Redirection PDU, revised HEADER to HEADER1.</p> <p>Changed from:</p> <pre>= SEC_SECURE_CHECKSUM   SEC_REDIRECTION_PKT  00 00 -&gt; TS_SECURITY_HEADER::flagsHi - ignored as flags field does not contain RDP_SEC_FLAGSHI_VALID (0x8000) 58 dd 3f e5 f3 de 80 26 -&gt; TS_SECURITY_HEADER::dataSignature  c0 d6 3f 26 0e 2c b5 93 dd 26 d5 4b 84 a1 1d 2a</pre> <p>Changed to:</p> <pre>= SEC_SECURE_CHECKSUM   SEC_REDIRECTION_PKT  00 00 -&gt; TS_SECURITY_HEADER::flagsHi - ignored as flags field does not contain RDP_SEC_FLAGSHI_VALID (0x8000) 58 dd 3f e5 f3 de 80 26 -&gt; TS_SECURITY_HEADER1::dataSignature  c0 d6 3f 26 0e 2c b5 93 dd 26 d5 4b 84 a1 1d 2a</pre>
2020/07/06	<p>In Section 2.2.4.1, Server Auto-Reconnect Status PDU, revised Client Auto-Reconnection Packet to Client Auto-Reconnect Packet.</p> <p>Changed from:</p> <p>The Auto-Reconnect Status PDU is sent by the server to the client to indicate that automatic reconnection using the Client Auto-Reconnection Packet (section 2.2.4.3), sent as part of the extended information of the Client Info PDU (section 2.2.1.11.1), has failed.</p> <p>Changed to:</p> <p>The Auto-Reconnect Status PDU is sent by the server to the client to indicate that automatic reconnection using the Client Auto-Reconnect Packet (section 2.2.4.3), sent as part of the extended information of the Client Info PDU (section 2.2.1.11.1), has failed.</p> <p>In Section 2.2.5.1.1, Set Error Info PDU Data, revised description for ERRINFO_CONTROLPDUSEQUENCE.</p>

Errata Published*	Description				
	<p>Changed from:</p> <table border="1" data-bbox="397 294 1412 409"> <tr> <td data-bbox="397 294 803 409">ERRINFO_CONTROLPDUSEQUENCE 0x000010CD</td> <td data-bbox="803 294 1412 409">An out-of-sequence Slow-Path Non-Data PDU (section 2.2.8.1.1.1.1) has been received.</td> </tr> </table> <p>Changed to:</p> <table border="1" data-bbox="397 514 1412 724"> <tr> <td data-bbox="397 514 803 724">ERRINFO_CONTROLPDUSEQUENCE 0x000010CD</td> <td data-bbox="803 514 1412 724">An out-of-sequence Server Demand Active PDU (section 2.2.1.13.1), Client Confirm Active PDU (section 2.2.1.13.2), Server Deactivate All PDU (section 2.2.3.1) or Enhanced Security Server Redirection PDU (section 2.2.13.3.1) has been received.</td> </tr> </table> <p>In Section 2.2.8.1.1.3.1.1, Slow-Path Input Event, revised definition for slowPathInputData.</p> <p>Changed from: slowPathInputData (variable): TS_KEYBOARD_EVENT, TS_UNICODE_KEYBOARD_EVENT, TS_POINTER_EVENT, TS_POINTERX_EVENT, or TS_SYNC_EVENT. The actual contents of the input event specified by the messageType field (sections 2.2.8.1.1.3.1.1.1 through 2.2.8.1.1.3.1.1.6).</p> <p>Changed to: slowPathInputData (variable): TS_KEYBOARD_EVENT, TS_UNICODE_KEYBOARD_EVENT, TS_POINTER_EVENT, TS_POINTERX_EVENT, TS_SYNC_EVENT, or TS_UNUSED_EVENT. The actual contents of the input event specified by the messageType field (sections 2.2.8.1.1.3.1.1.1 through 2.2.8.1.1.3.1.1.6).</p>	ERRINFO_CONTROLPDUSEQUENCE 0x000010CD	An out-of-sequence Slow-Path Non-Data PDU (section 2.2.8.1.1.1.1) has been received.	ERRINFO_CONTROLPDUSEQUENCE 0x000010CD	An out-of-sequence Server Demand Active PDU (section 2.2.1.13.1), Client Confirm Active PDU (section 2.2.1.13.2), Server Deactivate All PDU (section 2.2.3.1) or Enhanced Security Server Redirection PDU (section 2.2.13.3.1) has been received.
ERRINFO_CONTROLPDUSEQUENCE 0x000010CD	An out-of-sequence Slow-Path Non-Data PDU (section 2.2.8.1.1.1.1) has been received.				
ERRINFO_CONTROLPDUSEQUENCE 0x000010CD	An out-of-sequence Server Demand Active PDU (section 2.2.1.13.1), Client Confirm Active PDU (section 2.2.1.13.2), Server Deactivate All PDU (section 2.2.3.1) or Enhanced Security Server Redirection PDU (section 2.2.13.3.1) has been received.				
2020/07/06	<p>In Section 5.4.2.2, Direct Approach, revised the figure.</p> <p>Changed from:</p>				

Errata Published*	Description
-------------------	-------------



Changed to:





Errata Published*	Description
	<p>In that same section, changed from:</p> <p>When using the Direct Approach, no negotiation of the security protocol takes place. The client and server are hard-coded to use the Credential Security Support Provider (CredSSP) Protocol (section 5.4.5) when a connection is initiated. Once the security protocol handshake has completed successfully, the RDP Connection Sequence begins, starting with (a) the X.224 messages which form the Connection Initiation phase (section 1.3.1.1); or (b) the Early User Authorization Result PDU (section 2.2.10.2) followed by the X.224 messages. From this point all RDP traffic is encrypted using the CredSSP External Security Protocol.</p> <p>The RDP Negotiation Request (section 2.2.1.1.1) will still be appended to the X.224 Connection Request PDU (section 2.2.1.1) and the requested protocol list will contain the identifier of the CredSSP protocol (section 2.2.1.1.1). If this is not the case, the server will append an RDP Negotiation Failure (section 2.2.1.2.2) to the X.224 Connection Confirm PDU (section 2.2.1.2) with a failure code of INCONSISTENT_FLAGS (0x04). Similarly, the server will indicate that the hard-coded security protocol is the selected protocol in the RDP Negotiation Response (section 2.2.1.2.1) which is appended to the X.224 Connection Confirm PDU.</p> <p>Changed to:</p> <p>When using the Direct Approach, no negotiation of the security protocol takes place. The client and server are hard-coded to use the Credential Security Support Provider (CredSSP) Protocol (section 5.4.5) when a connection is initiated. The Early User Authorization Result PDU (section 2.2.10.2) is not supported in the Direct Approach. Once the security protocol handshake has completed successfully, the RDP Connection Sequence begins, starting with the X.224 messages which form the Connection Initiation phase (section 1.3.1.1). From this point all RDP traffic is encrypted using the CredSSP External Security Protocol.</p> <p>The RDP Negotiation Request (section 2.2.1.1.1) MUST be appended to the X.224 Connection Request PDU (section 2.2.1.1) and the requested protocol list MUST contain the PROTOCOL_HYBRID (0x00000002) flag identifying the CredSSP protocol (section 2.2.1.1.1). If this is not the case, the server will append an RDP Negotiation Failure (section 2.2.1.2.2) to the X.224 Connection Confirm PDU (section 2.2.1.2) with a failure code of INCONSISTENT_FLAGS (0x04). Similarly, the server MUST indicate that CredSSP is the selected protocol in the RDP Negotiation Response (section 2.2.1.2.1) which is appended to the X.224 Connection Confirm PDU.</p>

\*Date format: YYYY/MM/DD