

## [MS-PSRDP-Diff]:

# PowerShell Remote Debugging Protocol

---

Intellectual Property Rights Notice for Open Specifications Documentation

- **Technical Documentation.** Microsoft publishes Open Specifications documentation (“this documentation”) for protocols, file formats, data portability, computer languages, and standards support. Additionally, overview documents cover inter-protocol relationships and interactions.
- **Copyrights.** This documentation is covered by Microsoft copyrights. Regardless of any other terms that are contained in the terms of use for the Microsoft website that hosts this documentation, you can make copies of it in order to develop implementations of the technologies that are described in this documentation and can distribute portions of it in your implementations that use these technologies or in your documentation as necessary to properly document the implementation. You can also distribute in your implementation, with or without modification, any schemas, IDLs, or code samples that are included in the documentation. This permission also applies to any documents that are referenced in the Open Specifications documentation.
- **No Trade Secrets.** Microsoft does not claim any trade secret rights in this documentation.
- **Patents.** Microsoft has patents that might cover your implementations of the technologies described in the Open Specifications documentation. Neither this notice nor Microsoft's delivery of this documentation grants any licenses under those patents or any other Microsoft patents. However, a given Open Specifications document might be covered by the Microsoft [Open Specifications Promise](#) or the [Microsoft Community Promise](#). If you would prefer a written license, or if the technologies described in this documentation are not covered by the Open Specifications Promise or Community Promise, as applicable, patent licenses are available by contacting [iplg@microsoft.com](mailto:iplg@microsoft.com).
- **License Programs.** To see all of the protocols in scope under a specific license program and the associated patents, visit the [Patent Map](#).
- **Trademarks.** The names of companies and products contained in this documentation might be covered by trademarks or similar intellectual property rights. This notice does not grant any licenses under those rights. For a list of Microsoft trademarks, visit [-www.microsoft.com/trademarks](http://www.microsoft.com/trademarks).
- **Fictitious Names.** The example companies, organizations, products, domain names, email addresses, logos, people, places, and events that are depicted in this documentation are fictitious. No association with any real company, organization, product, domain name, email address, logo, person, place, or event is intended or should be inferred.

**Reservation of Rights.** All other rights are reserved, and this notice does not grant any rights other than as specifically described above, whether by implication, estoppel, or otherwise.

**Tools.** The Open Specifications documentation does not require the use of Microsoft programming tools or programming environments in order for you to develop an implementation. If you have access to Microsoft programming tools and environments, you are free to take advantage of them. Certain Open Specifications documents are intended for use in conjunction with publicly available standards specifications and network programming art and, as such, assume that the reader either is familiar with the aforementioned material or has immediate access to it.

**Support.** For questions and support, please contact [dochelp@microsoft.com](mailto:dochelp@microsoft.com).

## Revision Summary

Date	Revision History	Revision Class	Comments
5/15/2014	1.0	New	Released new document.
6/30/2015	2.0	Major	Significantly changed the technical content.
10/16/2015	2.0	None	No changes to the meaning, language, or formatting of the technical content.
7/14/2016	2.0	None	No changes to the meaning, language, or formatting of the technical content.
<u>6/1/2017</u>	<u>2.0</u>	<u>None</u>	<u>No changes to the meaning, language, or formatting of the technical content.</u>

# Table of Contents

<b>1</b>	<b>Introduction .....</b>	<b>5</b>
1.1	Glossary .....	5
1.2	References .....	5
1.2.1	Normative References .....	5
1.2.2	Informative References .....	5
1.3	Overview .....	5
1.4	Relationship to Other Protocols .....	6
1.5	Prerequisites/Preconditions .....	6
1.6	Applicability Statement .....	6
1.7	Versioning and Capability Negotiation .....	6
1.8	Vendor-Extensible Fields .....	7
1.9	Standards Assignments.....	7
<b>2</b>	<b>Messages.....</b>	<b>8</b>
2.1	Transport .....	8
2.1.1	Transport of Client Messages.....	8
2.1.2	Transport of REMOTE_DEBUGGER_STATE Message .....	8
2.1.3	Transport of REMOTE_DEBUGGER_BREAKPOINT_UPDATED_EVENT Message.....	8
2.1.4	Transport of REMOTE_DEBUGGER_STOP_EVENT Message .....	8
2.2	Message Syntax.....	8
2.2.1	Namespaces .....	8
2.2.2	SET_PSDEBUGMODE Message.....	8
2.2.3	SET_PSDEBUGGERACTION Message.....	8
2.2.4	GET_PSDEBUGGERSTOPARGS Message .....	9
2.2.5	SET_PSDEBUGGERSTEPMODE Message .....	9
2.2.6	SET_PSUNHANDLEDBREAKPOINTMODE Message .....	9
2.2.7	REMOTE_DEBUGGER_STATE Message .....	9
2.2.8	REMOTE_DEBUGGER_BREAKPOINT_UPDATED_EVENT Message.....	9
2.2.9	REMOTE_DEBUGGER_STOP_EVENT Message.....	10
<b>3</b>	<b>Protocol Details .....</b>	<b>11</b>
3.1	Client Details .....	11
3.1.1	Abstract Data Model.....	11
3.1.2	Initialization.....	11
3.1.3	Higher-Layer Triggered Events .....	11
3.1.4	Message Processing Events and Sequencing Rules .....	11
3.1.4.1	SET_PSDEBUGMODE Message .....	11
3.1.4.2	SET_PSDEBUGGERACTION Message .....	12
3.1.4.3	GET_PSDEBUGGERSTOPARGS Message .....	12
3.1.4.4	SET_PSDEBUGGERSTEPMODE Message .....	12
3.1.4.5	SET_PSUNHANDLEDBREAKPOINTMODE Message .....	12
3.1.5	Other Local Events.....	12
3.2	Server Details.....	12
3.2.1	Abstract Data Model.....	12
3.2.2	Initialization.....	13
3.2.3	Higher-Layer Triggered Events .....	13
3.2.4	Message Processing Events and Sequencing Rules .....	13
3.2.4.1	SET_PSDEBUGMODE Message .....	13
3.2.4.2	SET_PSDEBUGGERACTION Message .....	13
3.2.4.3	GET_PSDEBUGGERSTOPARGS Message .....	13
3.2.4.4	SET_PSDEBUGGERSTEPMODE Message .....	13
3.2.4.5	SET_PSUNHANDLEDBREAKPOINTMODE Message .....	14
3.2.4.6	REMOTE_DEBUGGER_STATE Message .....	14
3.2.4.7	REMOTE_DEBUGGER_BREAKPOINT_UPDATED_EVENT Message .....	14
3.2.4.8	REMOTE_DEBUGGER_STOP_EVENT Message.....	14

3.2.5	Other Local Events.....	14
<b>4</b>	<b>Protocol Examples.....</b>	<b>15</b>
<b>5</b>	<b>Security.....</b>	<b>16</b>
5.1	Security Considerations for Implementers .....	16
5.2	Index of Security Parameters .....	16
<b>6</b>	<b>Appendix A: Product Behavior .....</b>	<b>17</b>
<b>7</b>	<b>Change Tracking.....</b>	<b>18</b>
<b>8</b>	<b>Index.....</b>	<b>19</b>

# 1 Introduction

The PowerShell Remote Debugging Protocol (PSRDP) extends the existing PowerShell Remoting Protocol (PSRP) specified in [MS-PSRP] to support debugging over a remote session.

Sections 1.5, 1.8, 1.9, 2, and 3 of this specification are normative. All other sections and examples in this specification are informative.

## 1.1 Glossary

This document uses the following terms:

**breakpoint:** A temporary stopping place in executing code.

**debugger:** An application or function that is used to perform debugging actions.

**debugging:** The process of stopping and stepping through running code to analyze the behavior of the code.

**remote debugging:** Debugging that operates over a remote session.

**remote session:** A session established from a client to a server via PSRP.

**MAY, SHOULD, MUST, SHOULD NOT, MUST NOT:** These terms (in all caps) are used as defined in [RFC2119]. All statements of optional behavior use either MAY, SHOULD, or SHOULD NOT.

## 1.2 References

Links to a document in the Microsoft Open Specifications library point to the correct section in the most recently published version of the referenced document. However, because individual documents in the library are not updated at the same time, the section numbers in the documents may not match. You can confirm the correct section numbering by checking the Errata.

### 1.2.1 Normative References

We conduct frequent surveys of the normative references to assure their continued availability. If you have any issue with finding a normative reference, please contact dochelp@microsoft.com. We will assist you in finding the relevant information.

[MS-PSRP] Microsoft Corporation, "PowerShell Remoting Protocol".

[RFC2119] Bradner, S., "Key words for use in RFCs to Indicate Requirement Levels", BCP 14, RFC 2119, March 1997, <http://www.rfc-editor.org/rfc/rfc2119.txt>

### 1.2.2 Informative References

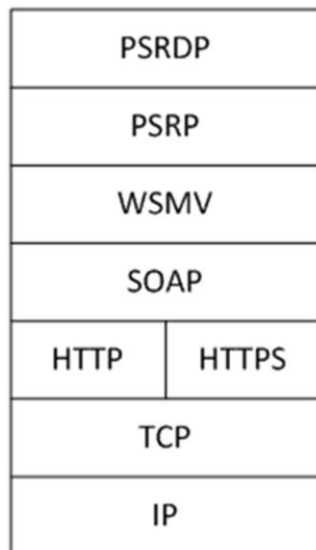
None.

## 1.3 Overview

This protocol extends the existing PowerShell Remoting Protocol (PSRP) specified in [MS-PSRP] to support debugging over a remote session.

## 1.4 Relationship to Other Protocols

This protocol depends on PSRP specified in [MS-PSRP] for transport of messages between client and server.



**Figure 1: Relationship of the PowerShell Remote Debugging Protocol to other protocols**

## 1.5 Prerequisites/Preconditions

Because this protocol is a higher layer than PSRP, a remote session established over PSRP is required before this protocol can operate. The client must be aware of the **Debugger\_State**, **Resume\_Action**, **Debugger\_Mode**, **Debugger\_Breakpoint\_Collection**, **Debugger\_Stop\_Context**, **Debugger\_Step\_Mode**, and **Debugger\_UnhandledBreakpoint\_Mode**<1> abstract data model elements, specified in section 3.2.1, on the server.

## 1.6 Applicability Statement

This protocol can be used only in conjunction with PSRP that has been initialized with a single runspace in its runspace pool as specified in [MS-PSRP] section 2.2.2.2 INIT\_RUNSPACEPOOL Message.

## 1.7 Versioning and Capability Negotiation

This document covers versioning issues in the following areas:

**Capability Negotiation:** The client determines that the server supports remote debugging by looking for **Debugger\_State** data returned in the PSRP APPLICATION\_PRIVATE\_DATA message specified in section 2.2.7, after session creation. If this data exists, the client determines that the server capability includes remote debugging support.

## **1.8 Vendor-Extensible Fields**

None.

## **1.9 Standards Assignments**

None.

## 2 Messages

### 2.1 Transport

Messages are transported using PSRP.

#### 2.1.1 Transport of Client Messages

Client to server messages MUST be sent as PSRP pipeline commands as specified in [MS-PSRP] section 2.2.2.10 and section 2.2.3.11.

#### 2.1.2 Transport of REMOTE\_DEBUGGER\_STATE Message

The server MUST send the REMOTE\_DEBUGGER\_STATE message to the client as a PSRP APPLICATION\_PRIVATE\_DATA message as specified in [MS-PSRP] section 2.2.2.13.

#### 2.1.3 Transport of REMOTE\_DEBUGGER\_BREAKPOINT\_UPDATED\_EVENT Message

The server MUST send the REMOTE\_DEBUGGER\_BREAKPOINT\_UPDATED\_EVENT message to the client as a PSRP USER\_EVENT message as specified in [MS-PSRP] section 2.2.2.12.

#### 2.1.4 Transport of REMOTE\_DEBUGGER\_STOP\_EVENT Message

The server MUST send the REMOTE\_DEBUGGER\_STOP\_EVENT message to the client as a PSRP USER\_EVENT message as specified in [MS-PSRP] section 2.2.2.12.

### 2.2 Message Syntax

All message data is passed using PSRP mechanisms and therefore MUST use the PSRP message syntax as specified in [MS-PSRP] section 2.2.

#### 2.2.1 Namespaces

All message data is passed using PSRP mechanisms and therefore MUST use namespaces as specified in [MS-PSRP] section 2.2.5.

#### 2.2.2 SET\_PSDEBUGMODE Message

This message is a PSRP pipeline command sent from the client to the server.

This message MUST be sent as a PSRP pipeline command as specified in [MS-PSRP] section 2.2.2.10 and section 2.2.3.12.

The PSRP pipeline command name MUST be Set-PSDebugMode.

The PSRP pipeline command MUST take a single 32-bit argument (**Debugger\_Mode**).

#### 2.2.3 SET\_PSDEBUGGERACTION Message

This message is a PSRP pipeline command message sent from the client to the server.

This message MUST be sent as a PSRP pipeline command as specified in [MS-PSRP] section 2.2.2.10 and section 2.2.3.12.



The PSRP pipeline command name MUST be Set-PSDebuggerAction.

The PSRP pipeline command MUST take a single 32-bit argument (**Resume\_Action**).

#### 2.2.4 GET\_PSDEBUGGERSTOPARGS Message

This message is a PSRP pipeline command sent from the client to the server.

This message MUST be sent as a PSRP pipeline command as specified in [MS-PSRP] section 2.2.2.10 and section 2.2.3.12.

The PSRP pipeline command name MUST be Get-PSDebuggerStopArgs.

The PSRP pipeline command MUST NOT take arguments.

The PSRP pipeline command MUST return a data structure containing the server debugger stop state (**Debugger\_Stop\_Context**).

#### 2.2.5 SET\_PSDEBUGGERSTEPMODE Message

The SET\_PSDEBUGGERSTEPMODE message<2> is a PSRP pipeline command sent from the client to the server. It MUST be sent as a PSRP pipeline command as specified in [MS-PSRP] section 2.2.2.10 and [MS-PSRP] section 2.2.3.12.

The PSRP pipeline command name MUST be Set-PSDebuggerStepMode and take a single 32 bit argument (**Debugger\_Step\_Mode**).

#### 2.2.6 SET\_PSUNHANDLEDDBREAKPOINTMODE Message

The SET\_PSUNHANDLEDDBREAKPOINTMODE message<3> is a PSRP pipeline command sent from the client to the server. It MUST be sent as a PSRP pipeline command as specified in [MS-PSRP] section 2.2.2.10 and [MS-PSRP] section 2.2.3.12.

The PSRP pipeline command name MUST be Set-PSUnhandledBreakpointMode and take a single 32 bit argument (**Debugger\_UnhandledBreakpoint\_Mode**).

#### 2.2.7 REMOTE\_DEBUGGER\_STATE Message

This message is sent from the server to the client.

This message MUST be sent as the PSRP APPLICATION\_PRIVATE\_DATA message as specified in [MS-PSRP] section 2.2.2.13.

This message MUST contain a **Debugger\_State** data structure.

The PSRP APPLICATION\_PRIVATE\_DATA message allows for a collection of multiple data structures to be sent from the server to the client after a successful connection is established via PSRP. This message is the same as the PSRP APPLICATION\_PRIVATE\_DATA message but includes the **Debugger\_State** data structure as defined by a higher layer.

#### 2.2.8 REMOTE\_DEBUGGER\_BREAKPOINT\_UPDATED\_EVENT Message

This message is sent from the server to the client.

This message MUST be sent using the PSRP USER\_EVENT event mechanism specified in [MS-PSRP] section 2.2.2.12.

The PSRP USER\_EVENT source identifier string MUST be PSInternalRemoteDebuggerBreakpointUpdatedEvent.

This event message MUST contain a server **Debugger\_Breakpoint\_Collection** data structure.

### **2.2.9 REMOTE\_DEBUGGER\_STOP\_EVENT Message**

This message is sent from the server to the client.

This message MUST be sent using the PSRP USER\_EVENT event mechanism specified in [MS-PSRP] section 2.2.2.12.

The PSRP USER\_EVENT source identifier string MUST be PSInternalRemoteDebuggerStopEvent.

This event message MUST contain a server **Debugger\_Stop\_Context** data structure.

## 3 Protocol Details

### 3.1 Client Details

The client can send three messages to the server.

1. SET\_PSDEBUGMODE (section 2.2.2). This message is sent to the server to set the **Debugger\_Mode** state on the server.
2. SET\_PSDEBUGGERACTION (section 2.2.3). This message is sent to the server in response to a server REMOTE\_DEBUGGER\_STOP\_EVENT message. It sets the **Resume\_Action** state on the server.
3. GET\_PSDEBUGGERSTOPARGS (section 2.2.4). This message queries the server for the **Debugger\_Stop\_Context** information.

#### 3.1.1 Abstract Data Model

None.

#### 3.1.2 Initialization

This protocol is initialized when a remote session is established over PSRP. After this, the client higher layer MAY<4> initialize the remote session for remote debugging by sending the SET\_PSDEBUGMODE message, as specified in section 2.2.2, to the server.

#### 3.1.3 Higher-Layer Triggered Events

- When the client sends a SET\_PSDEBUGMODE message (section 2.2.2) to the server, the server uses the message argument value **Debugger\_Mode** to update its state.
- When the client sends a SET\_PSDEBUGGERACTION message (section 2.2.3) to the server, the server uses the message argument value **Resume\_Action** to update its state.
- When the client sends a GET\_PSDEBUGGERSTOPARGS message (section 2.2.4) to the server, the server returns the current **Debugger\_Stop\_Context** data to the client via the PSRP pipeline command infrastructure specified in [MS-PSRP] section 2.2.2.10 and section 2.2.3.12.
- When the client sends a SET\_PSDEBUGGERSTEPMODE message (section 2.2.5) to the server, the server uses the message argument value **Debugger\_Step\_Mode** to update its state.
- When the client sends a SET\_PSUNHANDLEDBREAKPOINTMODE message (section 2.2.6) to the server, the server uses the message argument value **Debugger\_UnhandledBreakpoint\_Mode** to update its state.

#### 3.1.4 Message Processing Events and Sequencing Rules

##### 3.1.4.1 SET\_PSDEBUGMODE Message

This message is sent at the discretion of the client to set the server-side **Debugger\_Mode** state.

### 3.1.4.2 SET\_PSDEBUGGERACTION Message

This message is sent by the client in response to a server REMOTE\_DEBUGGER\_STOP\_EVENT message as specified in section 2.2.9. The client sends this message to set the server-side **Resume\_Action** state.

### 3.1.4.3 GET\_PSDEBUGGERSTOPARGS Message

This message is sent at the discretion of the client to retrieve the **Debugger\_Stop\_Context** information from the server.

### 3.1.4.4 SET\_PSDEBUGGERSTEPMODE Message

This message is sent at the discretion of the client to set the server-side Debugger\_StepMode state.

### 3.1.4.5 SET\_PSUNHANDLEDBREAKPOINTMODE Message

This message is sent at the discretion of the client to set the server-side Debugger\_UnhandledBreakpoint\_Mode state.

## 3.1.5 Other Local Events

None.

## 3.2 Server Details

The server supports remote debugging by handling client messages and sending server state and event data to the client.

### 3.2.1 Abstract Data Model

This section describes a conceptual model of possible data organization that an implementation maintains to participate in this protocol. The described organization is provided to facilitate the explanation of how the protocol behaves. This document does not mandate that implementations adhere to this model as long as their external behavior is consistent with that described in this document.

**Debugger\_Mode:** This is a 32-bit field representing the server-side debugger mode. The interpretation of this field is defined at a higher layer.

**Resume\_Action:** This is a 32-bit field representing the action the server-side debugger takes when resuming code execution. The interpretation of this field is defined at a higher layer.

**Debugger\_State:** This is a data structure representing the current state of the server debugger. The specific form of this data structure is defined at a higher layer.

**Debugger\_Breakpoint\_Collection:** This is a collection of data structures representing breakpoints on the server. The specific form of this data structure is defined at a higher layer.

**Debugger\_Stop\_Context:** This is a data structure that represents the server debugger stop state. The specific form of this data structure is defined at a higher layer.

**Debugger\_Step\_Mode:** This is a 32-bit field representing the server-side debugger stepping mode state. The interpretation of this field is defined at a higher layer.

**Debugger\_UnhandledBreakpoint\_Mode:** This is a 32-bit field representing the server-side state regarding the processing of unhandled breakpoints. The interpretation of this field is defined at a higher layer.

### 3.2.2 Initialization

This protocol is initialized when a remote session is established over PSRP.

### 3.2.3 Higher-Layer Triggered Events

- When the remote session is first established, the server MUST send a REMOTE\_DEBUGGER\_STATE message (section 2.2.7) to the client.
- When the server receives the SET\_PSDEBUGMODE message (section 2.2.2) from the client, it MUST set the server **Debugger\_Mode** state.
- When server breakpoint state changes in the remote session, the server MUST send a REMOTE\_DEBUGGER\_BREAKPOINT\_UPDATED\_EVENT message (section 2.2.8) to the client.
- When code execution is halted through debugger action in the remote session, the server MUST send a REMOTE\_DEBUGGER\_STOP\_EVENT message (section 2.2.9) to the client.
- When the server receives the SET\_PSDEBUGGERACTION message (section 2.2.3) from the client, it MUST set the server **Resume\_Action** state.
- When the server receives the GET\_PSDEBUGGERSTOPARGS message (section 2.2.4) from the client, it MUST return the server **Debugger\_Stop\_Context** information.
- When the server receives the SET\_PSDEBUGGERSTEPMODE message (section 2.2.5) from the client, it MUST set the **Debugger\_Step\_Mode** state.
- When the server receives the SET\_PSUNHANDLEDBREAKPOINTMODE message (section 2.2.6) from the client, it MUST set the **Debugger\_UnhandledBreakpoint\_Mode** state.

### 3.2.4 Message Processing Events and Sequencing Rules

#### 3.2.4.1 SET\_PSDEBUGMODE Message

When the server receives this message, it MUST update its **Debugger\_Mode** state as provided by the message argument specified in section 2.2.2.

#### 3.2.4.2 SET\_PSDEBUGGERACTION Message

When the server receives this message, it MUST update its **Resume\_Action** state as provided by the message argument specified in section 2.2.3.

#### 3.2.4.3 GET\_PSDEBUGGERSTOPARGS Message

When the server receives this message, it MUST return a **Debugger\_Stop\_Context** data structure corresponding to its current state.

#### 3.2.4.4 SET\_PSDEBUGGERSTEPMODE Message

When the server receives this message, it MUST update its **Debugger\_Step\_Mode** state as provided by the message argument specified in section 2.2.5.

#### **3.2.4.5 SET\_PSUNHANDLEDBREAKPOINTMODE Message**

When the server receives this message, it MUST update its **Debugger\_UnhandledBreakpoint\_Mode** state as provided by the message argument specified in section 2.2.6.

#### **3.2.4.6 REMOTE\_DEBUGGER\_STATE Message**

The server MUST send this message after a remote session is successfully established over PSRP as specified in section 2.2.7.

#### **3.2.4.7 REMOTE\_DEBUGGER\_BREAKPOINT\_UPDATED\_EVENT Message**

The server MUST send this message whenever its breakpoint state changes as specified in section 2.2.8.

#### **3.2.4.8 REMOTE\_DEBUGGER\_STOP\_EVENT Message**

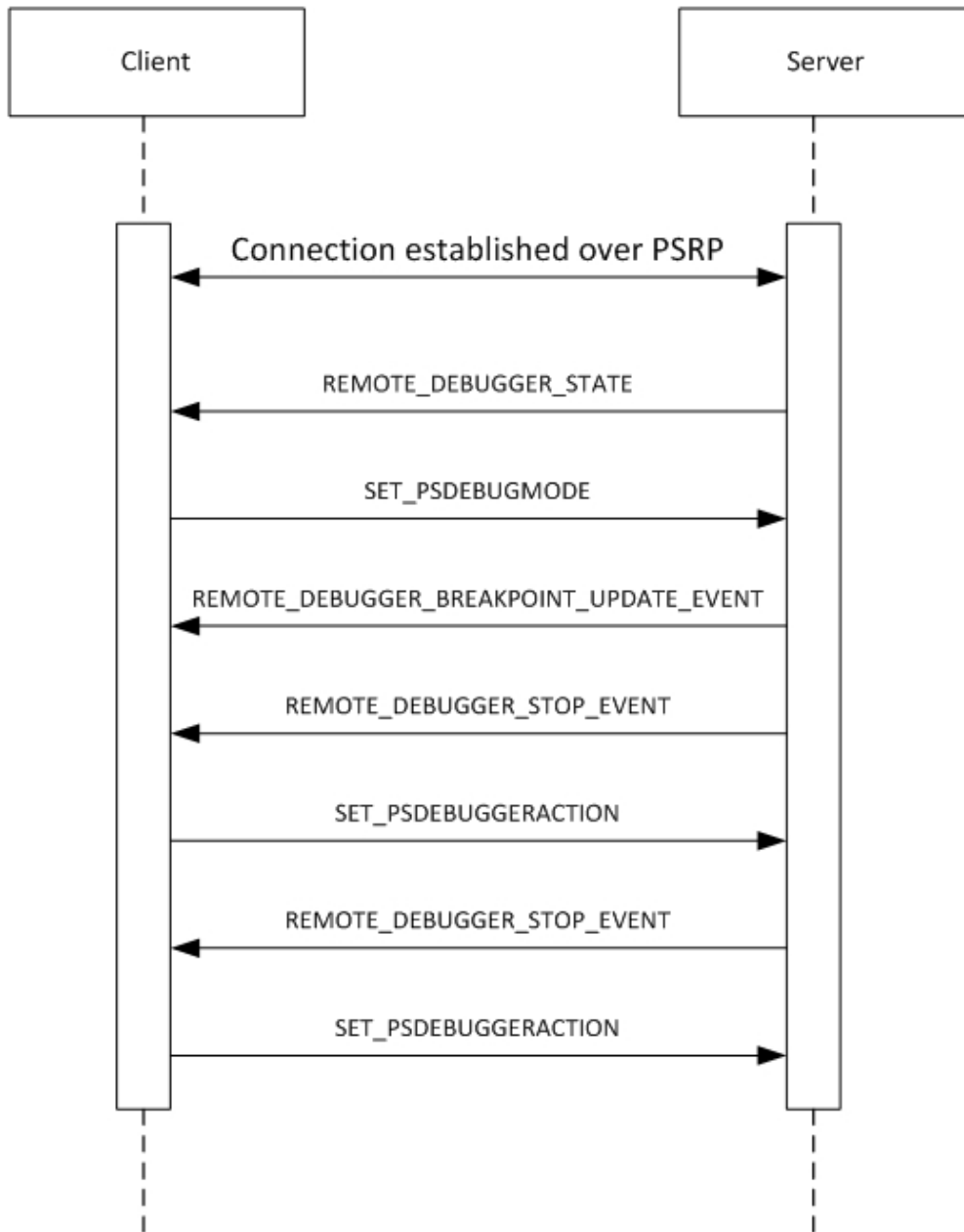
The server MUST send this message whenever running code is halted on the server for debugging purposes as specified in section 2.2.9.

#### **3.2.5 Other Local Events**

None.

## 4 Protocol Examples

A common remote debugging sequence is as follows:



**Figure 2: Common PowerShell Remote Debugging Protocol sequence**

## **5 Security**

### **5.1 Security Considerations for Implementers**

None.

### **5.2 Index of Security Parameters**

None.



## 6 Appendix A: Product Behavior

The information in this specification is applicable to the following Microsoft products or supplemental software. References to product versions include released service packs.

- Windows 7 operating system
- Windows Server 2008 R2 operating system
- ~~Windows 8 operating system~~
- Windows Server 2012 operating system
- Windows 8.1 operating system
- Windows Server 2012 R2 operating system
- Windows 10 operating system
- Windows Server 2016 operating system

Exceptions, if any, are noted below. If a service pack or Quick Fix Engineering (QFE) number appears with the product version, behavior changed in that service pack or QFE. The new behavior also applies to subsequent service packs of the product unless otherwise specified. If a product edition appears with the product version, behavior is different in that product edition.

Unless otherwise specified, any statement of optional behavior in this specification that is prescribed using the terms "SHOULD" or "SHOULD NOT" implies product behavior in accordance with the SHOULD or SHOULD NOT prescription. Unless otherwise specified, the term "MAY" implies that the product does not follow the prescription.

<1> Section 1.5: Debugger\_Step\_Mode and Debugger\_UnhandledBreakpoint\_Mode are not available in Windows ~~7~~, ~~Windows Server 2016~~~~2008 R2~~, ~~Windows Server 2012~~, ~~Windows 8.1~~, and Windows ~~10~~~~Server 2012 R2~~.

<2> Section 2.2.5: SET\_PSDEBUGGERSTEPMODE is ~~only~~not available in Windows ~~7~~, ~~Windows Server 2016~~~~2008 R2~~, ~~Windows Server 2012~~, ~~Windows 8.1~~, and Windows ~~10~~~~Server 2012 R2~~.

<3> Section 2.2.6: SET\_PSUNHANDLEDBREAKPOINTMODE is ~~only~~not available in Windows ~~Server 2016~~~~7~~, ~~Windows Server 2008 R2~~, ~~Windows Server 2012~~, ~~Windows 8.1~~, and Windows ~~10~~~~Server 2012 R2~~.

<4> Section 3.1.2: In Windows PowerShell, remote script debugging is opt in, therefore the server-side script debugger is created with remote debugging initially disabled. The Windows PowerShell client enables remote session debugging by sending the SET\_PSDEBUGMODE message to the server.

## 7 Change Tracking

No table of changes is available. The document is either new or has had no changes since its last release.

## 8 Index

### A

- Abstract data model
  - client 11
  - server 12
- Applicability 6

### C

- Capability negotiation 6
- Change tracking 18
- Client
  - abstract data model 11
  - higher-layer triggered events 11
  - initialization 11
  - other local events 12
  - overview 11

### D

- Data model - abstract
  - client 11
  - server 12

### F

- Fields - vendor-extensible 7

### G

- GET\_PSDEBUGGERSTOPARGS Message message 9
- Glossary 5

### H

- Higher-layer triggered events
  - client 11
  - server 13

### I

- Implementer - security considerations 16
- Index of security parameters 16
- Informative references 5
- Initialization
  - client 11
  - server 13
- Introduction 5

### M

- Messages
  - GET\_PSDEBUGGERSTOPARGS Message 9
  - GET\_PSDEBUGGERSTOPARGS Message message 9
  - Namespaces 8
  - Namespaces message 8
  - REMOTE\_DEBUGGER\_BREAKPOINT\_UPDATED\_EVENT Message 9
  - REMOTE\_DEBUGGER\_BREAKPOINT\_UPDATED\_EVENT Message message 9
  - REMOTE\_DEBUGGER\_STATE Message 9
  - REMOTE\_DEBUGGER\_STATE Message message 9
  - REMOTE\_DEBUGGER\_STOP\_EVENT Message 10
  - REMOTE\_DEBUGGER\_STOP\_EVENT Message message 10

- SET\_PSDEBUGGERACTION Message 8
- SET\_PSDEBUGGERACTION Message message 8
- SET\_PSDEBUGGERSTEPMODE Message 9
- SET\_PSDEBUGGERSTEPMODE Message message 9
- SET\_PSDEBUGMODE Message 8
- SET\_PSDEBUGMODE Message message 8
- SET\_PSUNHANDLEDBREAKPOINTMODE Message 9
- SET\_PSUNHANDLEDBREAKPOINTMODE Message message 9
- transport 8

## **N**

- Namespaces message 8
- Normative references 5

## **O**

- Other local events
  - client 12
  - server 14
- Overview (synopsis) 5

## **P**

- Parameters - security index 16
- Preconditions 6
- Prerequisites 6
- Product behavior 17

## **R**

- References 5
  - informative 5
  - normative 5
- Relationship to other protocols 6
- REMOTE\_DEBUGGER\_BREAKPOINT\_UPDATED\_EVENT Message message 9
- REMOTE\_DEBUGGER\_STATE Message message 9
- REMOTE\_DEBUGGER\_STOP\_EVENT Message message 10

## **S**

- Security
  - implementer considerations 16
  - parameter index 16
- Server
  - abstract data model 12
  - higher-layer triggered events 13
  - initialization 13
  - other local events 14
  - overview 12
- SET\_PSDEBUGGERACTION Message message 8
- SET\_PSDEBUGGERSTEPMODE Message message 9
- SET\_PSDEBUGMODE Message message 8
- SET\_PSUNHANDLEDBREAKPOINTMODE Message message 9
- Standards assignments 7

## **T**

- Tracking changes 18
- Transport 8
- Triggered events - higher-layer
  - client 11
  - server 13

## **V**

Vendor-extensible fields 7  
Versioning 6