

[MS-OTPCE-Diff]:

One-Time Password Certificate Enrollment Protocol

Intellectual Property Rights Notice for Open Specifications Documentation

- **Technical Documentation.** Microsoft publishes Open Specifications documentation (“this documentation”) for protocols, file formats, data portability, computer languages, and standards support. Additionally, overview documents cover inter-protocol relationships and interactions.
- **Copyrights.** This documentation is covered by Microsoft copyrights. Regardless of any other terms that are contained in the terms of use for the Microsoft website that hosts this documentation, you can make copies of it in order to develop implementations of the technologies that are described in this documentation and can distribute portions of it in your implementations that use these technologies or in your documentation as necessary to properly document the implementation. You can also distribute in your implementation, with or without modification, any schemas, IDLs, or code samples that are included in the documentation. This permission also applies to any documents that are referenced in the Open Specifications documentation.
- **No Trade Secrets.** Microsoft does not claim any trade secret rights in this documentation.
- **Patents.** Microsoft has patents that might cover your implementations of the technologies described in the Open Specifications documentation. Neither this notice nor Microsoft's delivery of this documentation grants any licenses under those patents or any other Microsoft patents. However, a given Open Specifications document might be covered by the Microsoft [Open Specifications Promise](#) or the [Microsoft Community Promise](#). If you would prefer a written license, or if the technologies described in this documentation are not covered by the Open Specifications Promise or Community Promise, as applicable, patent licenses are available by contacting iplg@microsoft.com.
- **License Programs.** To see all of the protocols in scope under a specific license program and the associated patents, visit the [Patent Map](#).
- **Trademarks.** The names of companies and products contained in this documentation might be covered by trademarks or similar intellectual property rights. This notice does not grant any licenses under those rights. For a list of Microsoft trademarks, visit www.microsoft.com/trademarks.
- **Fictitious Names.** The example companies, organizations, products, domain names, email addresses, logos, people, places, and events that are depicted in this documentation are fictitious. No association with any real company, organization, product, domain name, email address, logo, person, place, or event is intended or should be inferred.

Reservation of Rights. All other rights are reserved, and this notice does not grant any rights other than as specifically described above, whether by implication, estoppel, or otherwise.

Tools. The Open Specifications documentation does not require the use of Microsoft programming tools or programming environments in order for you to develop an implementation. If you have access to Microsoft programming tools and environments, you are free to take advantage of them. Certain Open Specifications documents are intended for use in conjunction with publicly available standards specifications and network programming art and, as such, assume that the reader either is familiar with the aforementioned material or has immediate access to it.

Support. For questions and support, please contact dochelp@microsoft.com.

Revision Summary

Date	Revision History	Revision Class	Comments
12/16/2011	1.0	New	Released new document.
3/30/2012	1.0	None	No changes to the meaning, language, or formatting of the technical content.
7/12/2012	2.0	Major	Significantly changed the technical content.
10/25/2012	2.0	None	No changes to the meaning, language, or formatting of the technical content.
1/31/2013	2.0	None	No changes to the meaning, language, or formatting of the technical content.
8/8/2013	3.0	Major	Significantly changed the technical content.
11/14/2013	3.0	None	No changes to the meaning, language, or formatting of the technical content.
2/13/2014	3.0	None	No changes to the meaning, language, or formatting of the technical content.
5/15/2014	3.0	None	No changes to the meaning, language, or formatting of the technical content.
6/30/2015	4.0	Major	Significantly changed the technical content.
10/16/2015	4.0	None	No changes to the meaning, language, or formatting of the technical content.
7/14/2016	4.0	None	No changes to the meaning, language, or formatting of the technical content.
6/1/2017	5.0	Major	Significantly changed the technical content.
9/15/2017	6.0	Major	Significantly changed the technical content.
12/1/2017	6.0	None	No changes to the meaning, language, or formatting of the technical content.
9/12/2018	7.0	Major	Significantly changed the technical content.
4/7/2021	8.0	Major	Significantly changed the technical content.
6/25/2021	9.0	Major	Significantly changed the technical content.

Table of Contents

1	Introduction	5
1.1	Glossary	5
1.2	References	7
1.2.1	Normative References	7
1.2.2	Informative References	7
1.3	Overview	8
1.4	Relationship to Other Protocols	11
1.5	Prerequisites/Preconditions	11
1.6	Applicability Statement	12
1.7	Versioning and Capability Negotiation	12
1.8	Vendor-Extensible Fields	12
1.9	Standards Assignments	12
2	Messages	13
2.1	Transport	13
2.2	Message Syntax	13
2.2.1	Namespaces	13
2.2.2	SignCert Request	13
2.2.3	SignCert Response	14
3	Protocol Details	16
3.1	Client Details	16
3.1.1	Abstract Data Model	16
3.1.2	Timers	16
3.1.3	Initialization	16
3.1.4	Higher-Layer Triggered Events	16
3.1.5	Message Processing Events and Sequencing Rules	16
3.1.5.1	Creating A SignCert Request Message	16
3.1.5.2	Processing A SignCert Response Message	17
3.1.6	Timer Events	17
3.1.7	Other Local Events	17
3.2	Server Details	17
3.2.1	Abstract Data Model	17
3.2.2	Timers	17
3.2.3	Initialization	17
3.2.4	Higher-Layer Triggered Events	18
3.2.5	Message Processing Events and Sequencing Rules	18
3.2.5.1	Processing A SignCert Request Message	18
3.2.6	Timer Events	19
3.2.7	Other Local Events	19
4	Protocol Examples	20
4.1	Accepted SignCert Request Example	20
4.2	SignCert Request with Invalid Credentials Example	21
4.3	Challenged SignCert Request Example	22
4.4	Invalid SignCert Request Example	22
5	Security	23
5.1	Security Considerations for Implementers	23
5.2	Index of Security Parameters	23
6	Appendix A: Full XML Schema	24
7	(Updated Section) Appendix B: Product Behavior	25
8	Change Tracking	26
9	Index	27

1 Introduction

The One-Time Password Certificate Enrollment Protocol was created to enhance the network security of remote access connections. The protocol uses different components to increase network security. For example, the one-time password (OTP) authentication mechanism provides enhanced security for remote clients connecting to a server by using different passwords for each logon session. Another component used by the protocol is a short-lived smart card logon certificate template.

Sections 1.5, 1.8, 1.9, 2, and 3 of this specification are normative. All other sections and examples in this specification are informative.

1.1 Glossary

This document uses the following terms:

Active Directory: The Windows implementation of a general-purpose directory service, which uses LDAP as its primary access protocol. Active Directory stores information about a variety of objects in the network such as user accounts, computer accounts, groups, and all related credential information used by Kerberos [MS-KILE]. Active Directory is either deployed as Active Directory Domain Services (AD DS) or Active Directory Lightweight Directory Services (AD LDS), which are both described in [MS-ADOD]: Active Directory Protocols Overview.

certificate template: A list of attributes that define a blueprint for creating an X.509 certificate. It is often referred to in non-Microsoft documentation as a "certificate profile". A certificate template is used to define the content and purpose of a digital certificate, including issuance requirements (certificate policies), implemented X.509 extensions such as application policies, key usage, or extended key usage as specified in [X509], and enrollment permissions. Enrollment permissions define the rules by which a certification authority (CA) will issue or deny certificate requests. In Windows environments, certificate templates are stored as objects in the Active Directory and used by Microsoft enterprise CAs.

certification authority (CA): A third party that issues public key certificates. Certificates serve to bind public keys to a user identity. Each user and certification authority (CA) can decide whether to trust another user or CA for a specific purpose, and whether this trust should be transitive. For more information, see [RFC3280].

DirectAccess: A collection of different component policies, including Name Resolution Policy and IPsec, which allows seamless connectivity to corporate resources when not physically connected to the corporate network.

enhanced key usage (EKU): An extension that is a collection of object identifiers (OIDs) that indicate the applications that use the key.

Group Policy: A mechanism that allows the implementer to specify managed configurations for users and computers in an Active Directory service environment.

Hypertext Transfer Protocol (HTTP): An application-level protocol for distributed, collaborative, hypermedia information systems (text, graphic images, sound, video, and other multimedia files) on the World Wide Web.

Hypertext Transfer Protocol Secure (HTTPS): An extension of HTTP that securely encrypts and decrypts web page requests. In some older protocols, "Hypertext Transfer Protocol over Secure Sockets Layer" is still used (Secure Sockets Layer has been deprecated). For more information, see [SSL3] and [RFC5246].

Kerberos: An authentication system that enables two parties to exchange private information across an otherwise open network by assigning a unique key (called a ticket) to each user that

logs on to the network and then embedding these tickets into messages sent by the users. For more information, see [MS-KILE].

Key Distribution Center (KDC): The Kerberos service that implements the authentication and ticket granting services specified in the Kerberos protocol. The service runs on computers selected by the administrator of the realm or domain; it is not present on every machine on the network. It must have access to an account database for the realm that it serves. KDCs are integrated into the domain controller role. It is a network service that supplies tickets to clients for use in authenticating to services.

key storage provider (KSP): A Cryptography API: Next Generation (CNG) component which can be used to create, delete, export, import, open and store keys.

one-time password (OTP): A password that is valid for only one logon session or transaction in the One-Time Password Certificate Enrollment Protocol.

Public Key Cryptography Standards (PKCS): A group of Public Key Cryptography Standards published by RSA Laboratories.

public key infrastructure (PKI): The laws, policies, standards, and software that regulate or manipulate certificates and public and private keys. In practice, it is a system of digital certificates, certificate authorities (CAs), and other registration authorities that verify and authenticate the validity of each party involved in an electronic transaction. For more information, see [X509] section 6.

Remote Authentication Dial-In User Service (RADIUS): A protocol for carrying authentication, authorization, and configuration information between a network access server (NAS) that prefers to authenticate connection requests from endpoints and a shared server that performs authentication, authorization, and accounting.

Secure Sockets Layer (SSL): A security protocol that supports confidentiality and integrity of messages in client and server applications that communicate over open networks. SSL supports server and, optionally, client authentication using X.509 certificates [X509] and [RFC5280]. SSL is superseded by Transport Layer Security (TLS). TLS version 1.0 is based on SSL version 3.0 [SSL3].

smart card: A portable device that is shaped like a business card and is embedded with a memory chip and either a microprocessor or some non-programmable logic. Smart cards are often used as authentication tokens and for secure key storage. Smart cards used for secure key storage have the ability to perform cryptographic operations with the stored key without allowing the key itself to be read or otherwise extracted from the card.

Unicode: A character encoding standard developed by the Unicode Consortium that represents almost all of the written languages of the world. The Unicode standard [UNICODE5.0.0/2007] provides three forms (UTF-8, UTF-16, and UTF-32) and seven schemes (UTF-8, UTF-16, UTF-16 BE, UTF-16 LE, UTF-32, UTF-32 LE, and UTF-32 BE).

XML: The Extensible Markup Language, as described in [XML1.0].

XML namespace: A collection of names that is used to identify elements, types, and attributes in XML documents identified in a URI reference [RFC3986]. A combination of XML namespace and local name allows XML documents to use elements, types, and attributes that have the same names but come from different sources. For more information, see [XMLNS-2ED].

MAY, SHOULD, MUST, SHOULD NOT, MUST NOT: These terms (in all caps) are used as defined in [RFC2119]. All statements of optional behavior use either MAY, SHOULD, or SHOULD NOT.

1.2 References

Links to a document in the Microsoft Open Specifications library point to the correct section in the most recently published version of the referenced document. However, because individual documents in the library are not updated at the same time, the section numbers in the documents may not match. You can confirm the correct section numbering by checking the Errata.

1.2.1 Normative References

We conduct frequent surveys of the normative references to assure their continued availability. If you have any issue with finding a normative reference, please contact dochelp@microsoft.com. We will assist you in finding the relevant information.

[MS-ADTS] Microsoft Corporation, "Active Directory Technical Specification".

[RFC1334] Lloyd, B., and Simpson, W., "PPP Authentication Protocols", RFC 1334, October 1992, <http://www.ietf.org/rfc/rfc1334.txt>

[RFC2119] Bradner, S., "Key words for use in RFCs to Indicate Requirement Levels", BCP 14, RFC 2119, March 1997, <http://www.rfc-editor.org/rfc/rfc2119.txt>

[RFC2315] Kaliski, B., "PKCS #7: Cryptographic Message Syntax Version 1.5", RFC 2315, March 1998, <http://www.ietf.org/rfc/rfc2315.txt>

[RFC2616] Fielding, R., Gettys, J., Mogul, J., et al., "Hypertext Transfer Protocol -- HTTP/1.1", RFC 2616, June 1999, <http://www.rfc-editor.org/rfc/rfc2616.txt>

[RFC2818] Rescorla, E., "HTTP Over TLS", RFC 2818, May 2000, <http://www.rfc-editor.org/rfc/rfc2818.txt>

[RFC2986] Nystrom, M. and Kaliski, B., "PKCS#10: Certificate Request Syntax Specification", RFC 2986, November 2000, <http://www.ietf.org/rfc/rfc2986.txt>

[XMLNS-2ED] Bray, T., Hollander, D., Layman, A., and Tobin, R., Eds., "Namespaces in XML 1.0 (Second Edition)", W3C Recommendation, August 2006, <http://www.w3.org/TR/2006/REC-xml-names-20060816/>

[XMLSCHEMA1] Thompson, H., Beech, D., Maloney, M., and Mendelsohn, N., Eds., "XML Schema Part 1: Structures", W3C Recommendation, May 2001, <http://www.w3.org/TR/2001/REC-xmlschema-1-20010502/>

[XML] World Wide Web Consortium, "Extensible Markup Language (XML) 1.0 (Fourth Edition)", W3C Recommendation 16 August 2006, edited in place 29 September 2006, <http://www.w3.org/TR/2006/REC-xml-20060816/>

1.2.2 Informative References

[MS-GPNRPT] Microsoft Corporation, "Group Policy: Name Resolution Policy Table (NRPT) Data Extension".

[MS-PKCA] Microsoft Corporation, "Public Key Cryptography for Initial Authentication (PKINIT) in Kerberos Protocol".

[MSFT-OTP] Microsoft Corporation, "Strong Authentication with One-Time Passwords in Windows 7 and Windows Server 2008 R2", February 2011, [http://technet.microsoft.com/en-us/library/gg637807\(WS.10\).aspx](http://technet.microsoft.com/en-us/library/gg637807(WS.10).aspx)

1.3 Overview

The One-Time Password Certificate Enrollment Protocol is a stateless application-layer protocol. This protocol defines one type of request message, sent from the client to the server, and one type of response message, returned by the server to the client. The request message consists of the user name, one-time password (OTP), and certificate enrollment request. The response message consists of the return code, an optional signed certificate enrollment request (the same request that was sent by the client to the server), and (also optional) the name of the certification authority (CA) from which to enroll the certificate.

This protocol was created for OTP authentication with DirectAccess as described in [MSFT-OTP]. It is used as part of the mechanism that transforms OTP credentials into a short-lived smart card logon certificate that is used for Kerberos smart card authentication. The certificate is short-lived to minimize the risk of it being reused for future authentication sessions. It is configured to the minimum lifetime supported by the public key infrastructure (PKI) in use. The following figure shows how the protocol is used in DirectAccess authentication.

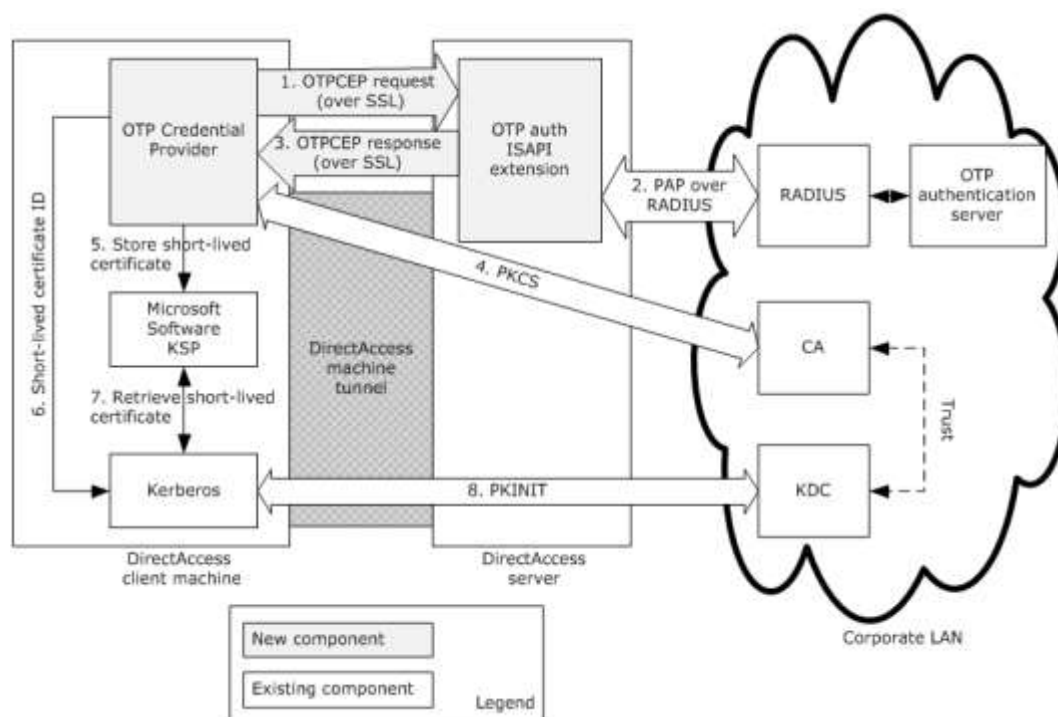


Figure 1: DirectAccess OTP authentication process

In the DirectAccess implementation of the One-Time Password Certificate Enrollment Protocol, the following events take place.

1. The DirectAccess client sends OTP credentials along with a short-lived smart card logon certificate enrollment request to the DirectAccess server over a Secure Sockets Layer (SSL) tunnel, where both client and server are mutually authenticated by certificates.
2. The DirectAccess server communicates with an OTP authentication server using the Password Authentication Protocol (PAP) [RFC1334] over Remote Authentication Dial-In User Service (RADIUS) in order to validate the OTP credentials.

3. The DirectAccess server signs the certificate enrollment request with a dedicated signing certificate only the DirectAccess server possesses. After that, the signed certificate request and the name of the CA (from which the DirectAccess client enrolls the short-lived smart card logon certificate) are sent to the DirectAccess client by using the OTPCE protocol.
4. The DirectAccess client communicates with the certification authority (CA) using a Public Key Cryptography Standards (PKCS) #10 request [RFC2986] and a PKCS #7 response [RFC2315] in order to enroll a short-lived smart card logon certificate. The enrolled short-lived certificate is used by the PKINIT Protocol ([MS-PKCA]) to acquire a new Kerberos ticket from the Key Distribution Center (KDC) for the user.

The following figure shows a protocol message exchange of successful OTP credential validation by the OTP server and the subsequent signing of the certificate enrollment request by the server.

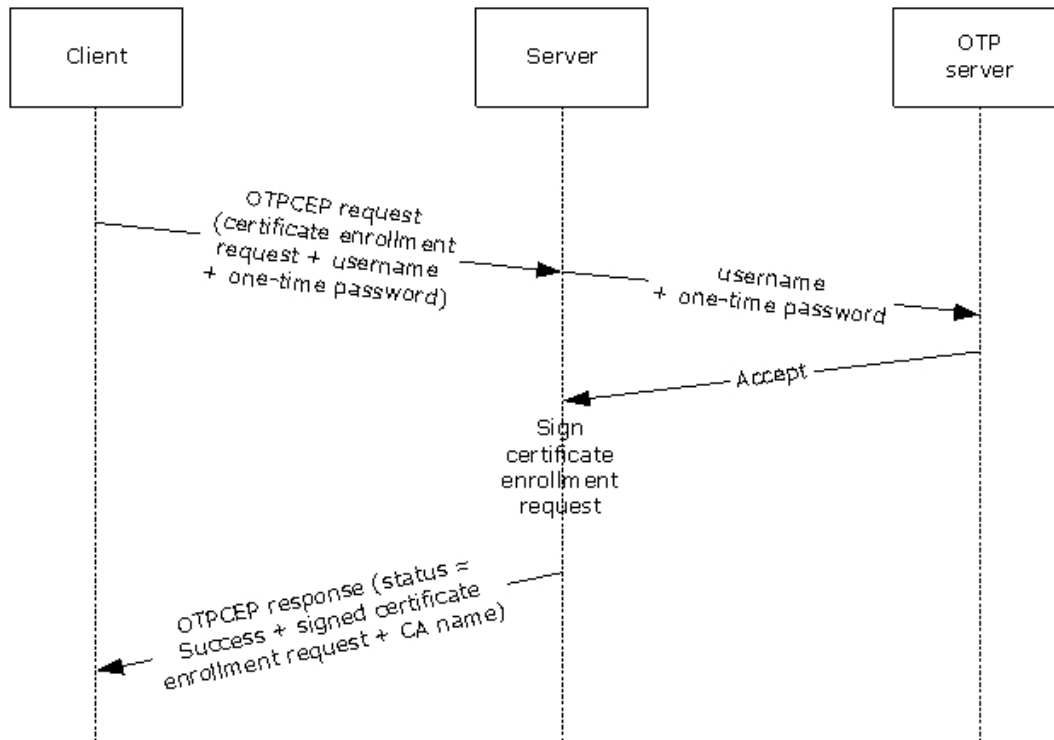


Figure 2: Successful sequence for certificate enrollment

The following figure shows a typical protocol message exchange in which invalid OTP credentials are rejected by the OTP server. In this case, the server returns an error and does not proceed with the signing of the certificate enrollment request.

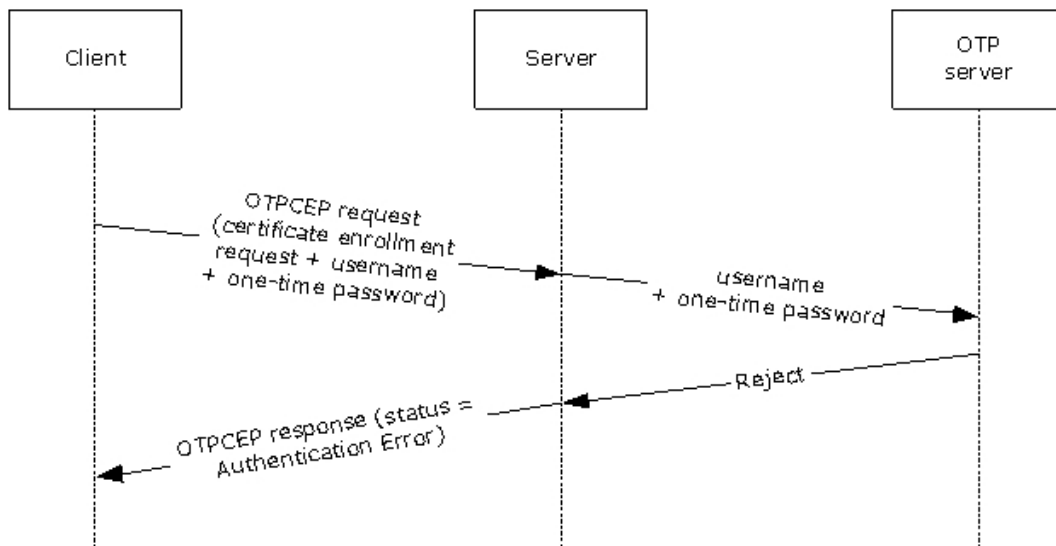


Figure 3: Typical sequence of a certificate enrollment with erroneous credentials

The following figure shows the use of the OTPCE protocol in Windows DirectAccess OTP authentication.

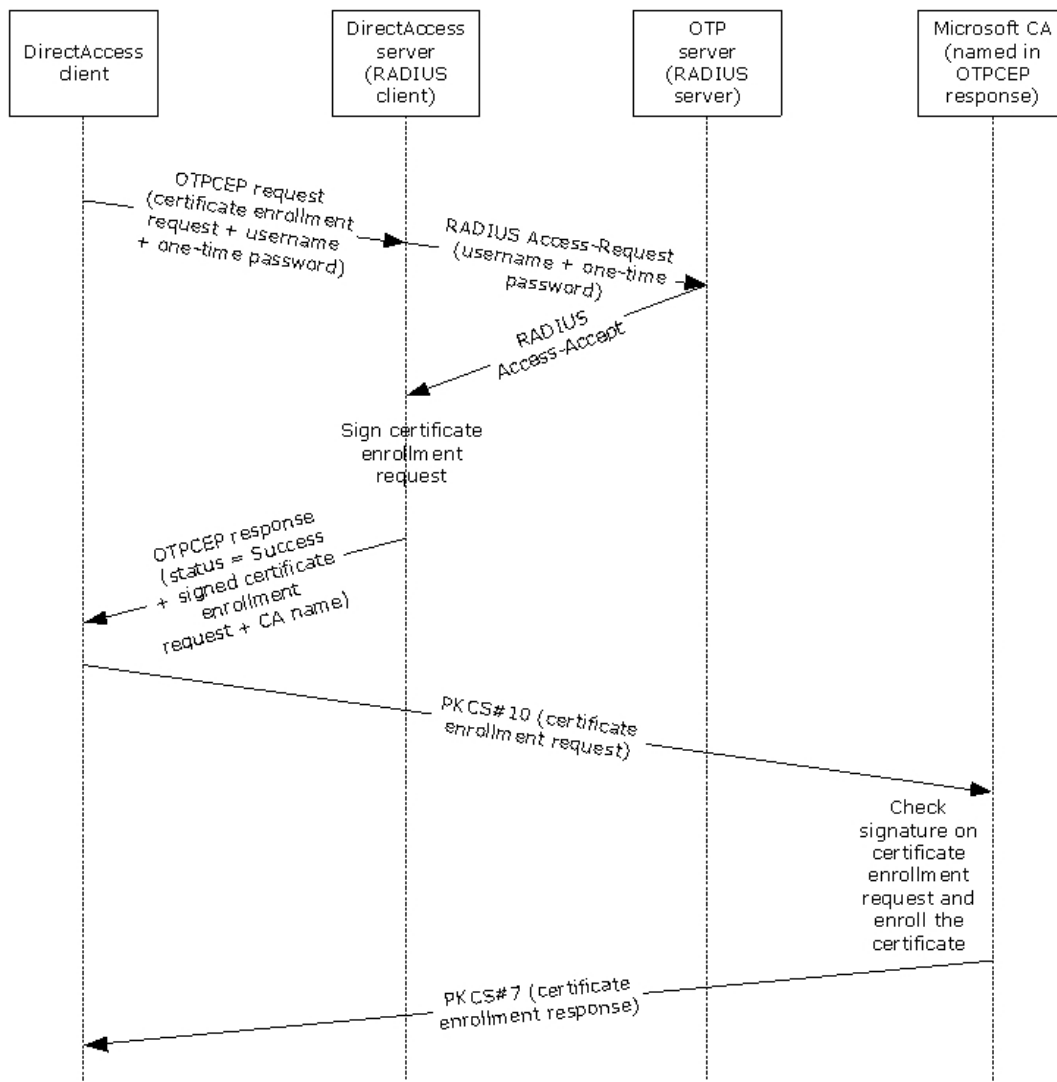


Figure 4: DirectAccess OTP authentication end to end flow

1.4 Relationship to Other Protocols

The One-Time Password Certificate Enrollment Protocol is a Hypertext Transfer Protocol (HTTP)-based protocol. Every protocol request is a single pair of HTTP POST and HTTP response messages. Failure to carry out the request due to server error is reported by an HTTP response code.

The parameters of the protocol's requests and responses are carried in XML-formatted body of the message. The full XML schema (XSD) is described in section 6.

1.5 Prerequisites/Preconditions

For One-Time Password Certificate Enrollment Protocol communication to begin, the prerequisite configuration is as follows:

1. The administrator sets up an OTP authentication solution from an OTP vendor that includes an OTP authentication server and hardware/software OTP tokens for end users.

2. The administrator establishes one or more implementation-specific<1> CA servers, configures a new, unique application-policy enhanced key usage (EKU) in Active Directory, and configures two certificate templates on it:
 1. A short-lived smart card logon certificate template.
 2. A signing certificate template with the new, unique application-policy EKU.

The CA server requires permissions to enroll certificates by using this certificate template. The administrator grants users read and enroll permissions to the short-lived smart card logon certificate template. The administrator grants the OTPCEP server enroll and auto enroll permissions to the signing certificate template.

In addition, configure the CA to verify that any short-lived smart card logon certificate request is signed by the signing certificate.

1.6 Applicability Statement

The One-Time Password Certificate Enrollment Protocol was designed to support OTP authentication for DirectAccess.

The use of this protocol is appropriate as the basis for any network authentication scenario that involves sending a request with OTP credentials and a certificate enrollment request, and receiving a signed certificate enrollment request.

1.7 Versioning and Capability Negotiation

For versioning control, a proprietary HTTP header "X-OTPCEP-version" is introduced and is mandatory in both the request and response. It is required to have the value of "1.0".

1.8 Vendor-Extensible Fields

None.

1.9 Standards Assignments

None.

2 Messages

2.1 Transport

The One-Time Password Certificate Enrollment Protocol does not provide its own secure transport. It MUST be transmitted over a secured channel, for example, Hypertext Transfer Protocol over Secure Sockets Layer (HTTPS), as specified in [RFC2818].

This protocol is encapsulated within and depends on HTTP, as specified in [RFC2616], for delivery of messages. The protocol does not impose any message retransmissions or other requirements on this transport.

2.2 Message Syntax

This section contains common definitions used by this protocol. The protocol is HTTP-based protocol. "Content-type" header is always set to Application/xml;charset=utf-8. The syntax of the definitions uses the XML schema as specified in [XMLSCHEMA1].

2.2.1 Namespaces

This specification defines and references various XML namespaces that are using the mechanisms specified in [XMLNS-2ED]. Although this document associates a specific XML namespace prefix for each XML namespace that is used, the choice of any particular XML namespace prefix is implementation-specific and not significant for interoperability.

Prefixes and XML namespaces used in this specification are as follows:

Prefix	Namespace URI	Reference
xs	http://www.w3.org/2001/XMLSchema	[XMLSCHEMA1]
otpcep	http://schemas.microsoft.com/otpcep/1.0/protocol	

2.2.2 SignCert Request

The **SignCert Request** is the message sent by a client when the end user is asked to provide OTP credentials in order to perform OTP authentication.

The message MUST be a Unicode XML 1.0 document that uses the following XML namespace as its default:

http://schemas.microsoft.com/otpcep/1.0/protocol

The XML document MUST contain a **signCertRequest** element. The message MUST NOT include additional data before or after the XML document. The XML document MAY contain trailing whitespace as part of the encoded content, as specified in [XML] section 2.1.

```
<xs:element name="signCertRequest">
  <xs:complexType>
    <xs:attribute name="username" type="xs:string"
      use="required" />
    <xs:attribute name="oneTimePassword" type="xs:string"
      use="required" />
    <xs:attribute name="certRequest" type="otpcep:CertificateRequestBase64Binary"
      use="required" />
  </xs:complexType>
</xs:element>
```

```
</xs:complexType>
</xs:element>
```

The **signCertRequest** element contains the following attributes:

username: A NULL-terminated string that contains the user name.

oneTimePassword: A NULL-terminated string that contains the user's one-time credentials. The one-time credentials MUST contain an ever-changing one-time password (OTP) part. The one-time credentials MAY contain a static password (PIN) part.

certRequest: The certificate enrollment request in PKCS #10 format ([RFC2986]). The request MUST be created by using the certificate template as defined in section 1.5.

The request MUST be digitally signed with a valid signature, as specified in [RFC2986].

2.2.3 SignCert Response

A **SignCert Response** message is returned by the OTPCEP server as a response to a **SignCert Request** message (section 2.2.2) received from the client.

The message MUST be a Unicode XML 1.0 document that uses the following XML namespace as its default:

<http://schemas.microsoft.com/otpcep/1.0/protocol>

The document MUST contain a **signCertResponse** element. The message MUST NOT include additional data before or after the XML document. The XML document MAY contain trailing whitespace as part of the encoded content, as specified in [XML] section 2.1.

```
<xs:complexType name="SignCertResponse">
  <xs:sequence>
    <xs:element name="IssuingCA" type="xs:anyURI" minOccurs="0" maxOccurs="unbounded" />
  </xs:sequence>
  <xs:attribute name="statusCode" type="otpcep:SignCertStatusCode" use="required" />
  <xs:attribute name="SignedCertRequest" type="otpcep:CertificateBase64Binary"
use="optional" />
</xs:complexType>
```

The **signCertResponse** element contains the following attributes:

IssuingCA (optional): If the user credentials are valid and the statusCode attribute equals Success, the names of one or more CA servers from which the client enrolls the short-lived smart card certificate are included in the **SignCert Response** message. Otherwise, this field MUST be empty.

statusCode: Can be one of the following enumeration values.

Value	Meaning
Success	Certificate enrollment request was signed successfully.
AuthenticationError	User credentials validation failed.
ChallengeResponseRequired	User credentials were challenged.
OtherError	Other error occurred during the validation of the OTP credentials or during signing of the certificate enrollment request.

SignedCertRequest (optional): If the user credentials are valid and the **statusCode** attribute equals Success, a signed certificate enrollment request is included in the **SignCert Response** message. Otherwise, this field **MUST** be empty.

3 Protocol Details

3.1 Client Details

3.1.1 Abstract Data Model

This section describes a conceptual model of possible data organization that an implementation maintains to participate in this protocol. The described organization is provided to facilitate the explanation of how the protocol behaves. This document does not mandate that implementations adhere to this model as long as their external behavior is consistent with that described in this document.

Server Name: A null-terminated Unicode string that represents the name of the server the client can communicate with in order to authenticate the user and enroll certificates for accessing corporate resources. A list of strings representing available servers can be used for high availability.

OTP Certificate Template Name: A null-terminated string representing the name of the short-lived smart card certificate template that is in use.

3.1.2 Timers

None.

3.1.3 Initialization

The Abstract Data Model (ADM) elements defined in section 3.1.1 are initialized during the client startup. They are configured by the administrator<2> and stored in persistent storage. On client startup, the configuration is read from the persistent storage and set in the ADM elements.

3.1.4 Higher-Layer Triggered Events

The One-Time Password Certificate Enrollment Protocol is invoked when a user logs on to a client computer from outside the corporate network by using a username/password, smart card, or any other user credentials available for login, and then attempts to connect to a corporate resource using a connection that requires one-time password (OTP) authentication. The client **MUST** create and send a **SignCert Request** message (section 2.2.2), as specified in section 3.1.5.2.

3.1.5 Message Processing Events and Sequencing Rules

3.1.5.1 Creating A SignCert Request Message

When the user performs an OTP authentication, the client performs the following steps.

1. The client creates a **SignCert Request** message (section 2.2.2) with the following attributes:
 - The logon name of the user is set as the **username** attribute in the **SignCert Request** message. The name is in the domain\username format.
 - The one-time credentials that the user provides after the logon are set in the **oneTimePassword** attribute of the **SignCert Request** message. The **oneTimePassword** attribute contains an ever-changing OTP part. The **oneTimePassword** attribute MAY contain a static password (PIN) part. The existence of the PIN part and the PIN and one-time password (OTP) concatenating format depend on the OTP vendor implementation.

- The client creates the certificate PKCS #10 request, as specified in [RFC2986], by using the template referred by the **OTP Certificate Template Name** ADM element, and sets it as the **CertRequest** attribute in the **SignCert Request** message.

2. The client sends the **SignCert Request** message to the server.

3.1.5.2 Processing A SignCert Response Message

Upon receiving the **SignCert Response** message (section 2.2.3), the client MUST send an enrollment request to the Certification Authority (CA) server using the signed certificate request, and MUST store the certificate issued by the CA using a key storage provider (KSP) to be used by the upper layer for authentication, thus enabling connectivity to the corporate resources.

If the **statusCode** attribute does not equal Success, the client fails the operation. The client MAY<3> display an error message to the user indicating that the operation failed.

3.1.6 Timer Events

None.

3.1.7 Other Local Events

None.

3.2 Server Details

3.2.1 Abstract Data Model

This section describes a conceptual model of possible data organization that an implementation maintains to participate in this protocol. The described organization is provided to facilitate the explanation of how the protocol behaves. This document does not mandate that implementations adhere to this model as long as their external behavior is consistent with that described in this document.

OTP servers information: A structure that represents the OTP servers that are available for credentials validation on the server. The information in the structure MAY contain a server name or IP address, port, and other connectivity-related attributes. A sorted list of available servers can be used for high availability or load balancing.

CA servers list: A null-terminated Unicode string that represents the names of the CAs available for issuing OTP certificates. A sorted list of strings representing available CAs can be used for high availability or load balancing.

Signing Certificate Template Name: A null-terminated string representing the name of the signing certificate template that is in use.

3.2.2 Timers

None.

3.2.3 Initialization

The ADM elements defined in section 3.2.1 are initialized during the server startup. They are configured by the administrator<4> and stored in persistent storage. On server startup, the configuration is read from persistent storage and set in the ADM elements.

3.2.4 Higher-Layer Triggered Events

None.

3.2.5 Message Processing Events and Sequencing Rules

3.2.5.1 Processing A SignCert Request Message

Upon receiving a **SignCert Request** message (section 2.2.2), the server performs the following steps:

1. Validate the certificate request received in the **SignCert Request** message:
 - The user name inside the certificate request **MUST** match the OTP user name received in the **username** attribute of the **SignCert Request** message. If the user name appears in multiple places in the certificate request, all instances **MUST** match the OTP user name.
 - The certificate template named in the user certificate request **MUST NOT** be empty and it **MUST** be the one that is configured in the server.
 - The certificate request **MUST** be digitally signed with a valid signature, as specified in [RFC2986].

If the validations fail, the server **MUST** stop processing the request and send a **SignCert Response** message (section 2.2.3) to the client with a status of OtherError, without setting the **SignedCertRequest** and **IssuingCA** attributes.

2. Validate that the user name is listed in Active Directory, as specified in [MS-ADTS]. If the validation fails, the server **MUST** stop processing the request and send a **SignCert Response** message to the client with a status of AuthenticationError, without setting the **SignedCertRequest** and **IssuingCA** attributes.
3. Validate user name, static password (if available), and one-time password (OTP) with the first OTP server represented in the **OTP servers information** ADM element using the Password Authentication Protocol (PAP) [RFC1334] over Remote Authentication Dial-In User Service (RADIUS) to validate the OTP credentials. If the validation fails, the server **MUST** stop the processing and send a **SignCert Response** message with an error status corresponding to the response received from OTP server:
 - If the OTP server cannot be reached, the server **MUST** send a status of OtherError to the client.
 - If the response from the OTP server is Access-Reject, the server **MUST** send a status message of AuthenticationError to the client.
 - If the response from OTP server is Challenge-Response, the server **MUST** send a status message of ChallengeResponseRequired to the client.

The **SignedCertRequest** and **IssuingCA** attributes are not set upon failure.

4. Sign the certificate request that was part of the **SignCert Request** message using the dedicated signing certificate. If this operation fails, the server **MUST** send a status message of OtherError to the client.

The **SignedCertRequest** and **IssuingCA** attributes are not set upon failure.

5. Verify that the list of CA servers in the **CA servers list** ADM element is not empty and pick the first CA server from the list. If this operation fails, the server **MUST** send a status message of OtherError to the client.

6. When a certificate is successfully signed, the server MUST create a **SignCert Response** message with the following values in it:
 - The **statusCode** attribute is set to Success.
 - The **SignedCertRequest** attribute value is set to the signed certificate enrollment request.
 - The **IssuingCA** attribute is set to the name of the first or several high-ranked CA servers from the **CA servers list** ADM element.

Then the server MUST send the response back to the client.

3.2.6 Timer Events

None.

3.2.7 Other Local Events

None.


```
wz3DxVRRZrgB7u9xK/vM8uJLVbkOeXB3yvr&#xA;WwgoZ/n2MPqgb/SFAVnRcT/zugY7myGQgqP08TP4Ds7M4oPzKfL+G
vm30dpclUWK&#xA;2alz+FqJ0hL5BetISr8pR8aEtC6CGF+ZOVmLgQaPmctu0izTlA9TUj60UyHrNvY&#xA;tPrCqWrM
HAVPZgrl+cceUBM8gSLQzFrI3JCA2WrRBVepEQ7DaLmN52KnOMnRaWx&#xA;4uLRtS9c+HgiLYjWhz2ZAel1UL+1C5by
ofUkyKuxymlZyAK8htG6ZjcpblgJ+tHp&#xA;Bo/H9LqeXxV1hGmliaklRJ8CAwEAAaOCap8wggKbMDsGCSsGAQQBgjcV
BwQuMCwG&#xA;JCSGAQQBgjcVCI3Ea9/VloAZhy6B6tghhtTleUuBv/1bhNObdQIBZAIbAjAVBgNV&#xA;HSUEDjAMBGo
rBgEEAYI3UQEEMA4G1UddwEB/wQEAWIHgDADBgkrBgEEAYI3FQOE&#xA;EDAOMAwGCIsgAQQBgdRAQEwHQYDVR00BbY
EFJ1BitqJ0cAV4x48mx6N5PIYAnUg&#xA;MB8GA1UdIwQYMBaAFKBjofXgEOVQXMoEy3jGrNnwhuHzMIHXBgNVHR8Egc8
wgcw&#xA;gcmggcagcgOGGcBsZGFwOi8vL0NOPVJvb3RDQSI1EQzEsQ049REMxLENOPUNEUC&#xA;Tj1QdWJsAWM1Mj
BLZxklmJBTZXJ2aWNlcyxDTj1TZXJ2aWNlcyxDTj1Db25maWdl&#xA;cmF0aW9uLERDPWRvbWVpbjEsREM9Y29ycCxEQz
1jb2lwYw55LERDPWNvbT9jZXJ0&#xA;aWZpY2F0ZVJl dm9jYXRpb25MaXN0P2Jhc2U/b2JqZWN0Q2xhc3M9Y1JMRG1zdH
Jp&#xA;YnV0aW9uUG9pbmQwgc8GCCsGAQUFBwEBBIHCMIG/MIG8BggrBgEFBQcwAoaBr2xk&#xA;YXA6Ly8vQ049Um9vd
ENBLURDMsxDTj1BSUESQ049UHVibG1jJTlW52V5JTIwU2Vy&#xA;dm1jZXMsQ049U2VydmljZXMsQ049Q29uZmlndXJhd
GlvbixEQz1kb2lhaWw&#xA;PWNvcnAsREM9Y29tCGFueSxEQz1jb20/Y0FDZj0aWZpY2F0ZT9iYXN1P29iamVj&
#xA;dENsYXNzPWNlcnRmZmljYXRpb25BdXRob3YpZXR0b3RpdXRob3RpdXRob3RpdXRob3RpdXRob3RpdXRob3RpdXRob3
b2lwYw55LmNvbTANBgkqhkiG9w0BAQUFAAOCAQEANqGM&#xA;G1cNVQxfsWc9/RyrmAGatUG2YnqrE6IQMeELGUv2XoHv
QFwyX43+58h0rLmNdrVt&#xA;MQ6Vvzswz1gFUZBzU3YfuqQNR8TAWd7XKgYtCRJ8GLcTEPvU7XecPmesXuyzvp&#xA
;NuTdpP6R10iaJmv3H7Y8qyVcb9m6AWZkmfR3hLiXgBBk0yhMls12Mogmeo07wuwS&#xA;owbikkHqxGamlf1wr0RqmcV
C0ywS+FDgTJ3BNatQGOHnLCGH7/2fBnIxDcD8vqc&#xA;amtD1ZkvvjGdrr8uhD2oKtbVsj/U7z/VbGzgtOOfhtrqpb
0uVrAZQ/CbAorbQOQ&#xA;tEYEaRoefOskvHqk7zGCAoEwgZYCAQEwIjAdMRswGQYJKwYBAGCNxUJEWxEdWlt&#xA;es
BTAwduZXICAQAQCQYFKw4DAhOFAKA+MbcGCSqGS1b3DQEJAzEK&#xA;AjAjBgkqhkiG9w0BCQQxfgQUUmoa0CcmKMAyC19S
WfV0Y41918w&#xA;DQYJKoZIhvcNAQEBBQAEggEaIPGv8ke7ktZqzUpRn93FMrp+5V3UPqdbSI7UVWq2&#xA;CUTr49K2
HHTCpNfQFgCdnrEwKHvunoGszI1vHQaVi0mRc8R9Q9xM+QMqWxyAu25&#xA;YdX6Zqrof9f+VzdkPdmeAVLuxRe9CAFD
95RjGGTR59EJTIjwp43LUYyaXG7eGjVi&#xA;Y7yQuYN1O+HUYmbu0yPR2DkOtk7NHfmVZHu6Y0yQarjhMuHG1Un6Rmqw
V8bw5HAQ&#xA;4bF0K1CNxpGhtbCueCgisN0S1ig9P/rcHsi73fEdpuN55CIB/AcZLvxA3yQCz/s2&#xA;HxFXnepVhJb
HLPGL87oaTjs4aDQaC3PxLHoltFs3UZnAbw=&#xA;"><IssuingCA
xmlns="http://schemas.microsoft.com/otpcep/1.0/protocol">DC1.domain1.corp.company.com\RootCA-
DC1</IssuingCA></signCertResponse>
```

4.2 SignCert Request with Invalid Credentials Example

The following example describes a **SignCert Request** message (section 2.2.2) with an authentication error, where the user credentials validation failed.

```
<?xml version="1.0" encoding="UTF-8"?>
<signCertRequest xmlns="http://schemas.microsoft.com/otpcep/1.0/protocol"
certRequest="MIEIelZCCA38CAQAwfjETMBEGCgmSjOMt8ixkARKwA2NvbTEXMBUGCgmSjOMt8ixk
ARKwB2NvbXBhbncxkFDASBgoJkiaJk/IsZAEZFgRjB3JwMRcwFQYKCCZImiZPyLGQB
GRYH2G9tYwluMTEOMAwGA1UEAwVFXN1cnMxZDZANBgNVBAMMB1VzZXIgaMTCCAS1w
DQYJKoZIhvcNAQEBBQADggEPADCCAQoCggEBBAK79jEXp60FccV9x0+mH22Up+56X
TLHLompiiu/iH+NOUMj95qqKtqstUCjM2ij/01MYTp3NPx/Z+FrDCJ1o/83x1Adi
o/Y6DkgiAxt268adVKQ+WgZjVB1N8LSSJmOEj1+9zXKUsnJIP4JCHgmnAwxr/Ok2
vxw4EpLcI97Lr5JmkpIsm5k9bTxJCZdYptAW889gFY0dXHVe9wZU3jEKyc0172X
cJsvGmdxuUq3d+/cgdz6DAkVeP2NTR6tzeCY4gVMFQ12OIfy1KZFkKIFBTuBC/jv
Ionbb0TSznshInSVof6IOcylJUzLjhcqg+f00WXPuY2QNymlnatV4LaCW6sCAwEA
AaCCAdIwGgYKKwYBAGCNw0CAzEMFgo2LjIuODA1OC4yMfWGCSSGAQQBgjcVFDFP
ME0CAQUMIENMSUVOVDIuZG9tYwluMS5jb3JwLmNvbXBhbncuY29tDA1ET01BSU4x
HVZzXIXDbDUZNX0RXZlbnRmB2dCYWRDZXJ0LmV4ZTBmBgorBgEEAYI3DQICMVgw
VgIBAB50AE0AaQBJAHIAbWZzAG8AZgB0ACAAUwBvAGYAdAB3AGEAcgBlACAASwBl
AHkAIABTAHQAbwByAGEAZwBlACAUAUABYAG8AdgBpAGQAZQByAwEAMIHtBgkqhkiG
9w0BCQ4xgd8wgdwOgYJKwYBAGCNxUHBC0wKwYjKwYBAGCNxUIjcr39UihpmH
LoHq2CGG1OV5S7SgJyFGrhQCAWQCAQMwFQYDVR01BA4wDAYKKwYBAGCNxQCAjAO
BgNVHQ8BAf8EBAMCBAwHQYJKwYBAGCNxUKBBAwDjAMBgorBg" oneTimePassword="aPa$Sword1"
username="domain1\user1" xmlns:xsd="http://www.w3.org/2001/XMLSchema"
xmlns:xsi="http://www.w3.org/2001/XMLSchema-instance"/>
```

The following example describes the **SignCert Response** message (section 2.2.3) for the request that contained invalid data. The **statusCode** attribute equals **AuthenticationError**.

```
<?xml version="1.0" encoding="UTF-8"?>
```

```
<signCertResponse statusCode="AuthenticationError"
xmlns="http://schemas.microsoft.com/otpcep/1.0/protocol"/>
```

4.3 Challenged SignCert Request Example

The following example describes a **SignCert Request** message (section 2.2.2) that is challenged by the OTP server.

```
<?xml version="1.0" encoding="UTF-8"?>
<signCertRequest xmlns="http://schemas.microsoft.com/otpcep/1.0/protocol"
certRequest="MIIEIzCCA38CAQAwfjETMBEGCgmSjomT8ixkARKWA2NvbTEXMBUGCgmSjomT8ixk
ARKWB2NvbXBhbncxkFDASBgoJkiaJk/IsZAEZFgRjb3JwMRcwFQYKCCZImiZPyLGOB
GRYHZG9tYWluMTEOMAawGA1UEAwFVXNlcnMxMzZANBgNVBAMMB1VzZXIgaMTCCASiw
DQYJKoZIhvcNAQEBBQADggEPADCCAQoCggEBALa9+uJtdQSiAvW3n4hJZ6Eec89G
bJE+bc9Zsny019Wn/qffppXajOKp4g1Bn/DUJNYEtFUL0eeNZG2qv3ZAsplchiAq
03FcEblAEyz4hVsf/bAF83Snz08m2/DZON14pMd0Rlf3KNu7ERGuJQ1/pDKUMU1t
NOM6qDM2nAT/OpsPjcfOD7W7L1PFH8sDzFgcipQ237aoAIw2c7coott7gg8CwDN
k6Dccmt5ThD9KWYveDzXSMYfGH/+P6GhFHMZDf741zegSahIgrTFiGxc3tnyr8e5
MLEnHDMNtJP83yrSLmlx3oVzdhujtMsD/euz56K3ltz+f7PojI7mLBip4HECAwEA
AaCCAdIwGgYKkYBBAGCNw0CaZEMFgo2LjIuODA1OC4yMFwGCSSGAQQBgjcVFDFP
ME0CAQUMIENMSUVOVDIuZG9tYWluMS5jb3JwLmNvbXBhbncuY29tDA1ET01BSU4x
XHVzZXIxDDBuZXR0ZXI0b2dYWRDZXJ0LmV4ZTBmBgorBgEEAYI3DQICMVgw
VgIBAB50AE0AaQBjAHIAbwBzAG8AZgB0ACAAUwBvAGYAdAB3AGEAcgBlACAASwBl
AHkAIABTAHQAbwByAGEAZwBlACAAUABYAG8AdgBpAGQAZQByAwEAMIHtBgkqhkiG
9w0BCQ4xgd8wgdwOgYJKwYBBAGCNxUHBC0wKwYjKwYBBAGCNxUIjcRr39UihpmH
LoHq2CGG1OV5S7SgYfGrhQCAWQCAQMwFQYDVR01BA4wDAYKKwYBBAGCNxQCAjAO
BgNVHQ8BAf8EBAMCBaAwHQYJKwYBBAGCNxUKBBAwDjAMBgorBgEE" oneTimePassword="05278361"
username="domain1\user1" xmlns:xsd="http://www.w3.org/2001/XMLSchema"
xmlns:xsi="http://www.w3.org/2001/XMLSchema-instance"/>
```

The following example describes the **SignCert Response** message (section 2.2.3) for the challenged request. The **statusCode** attribute equals ChallengeResponseRequired.

```
<?xml version="1.0" encoding="UTF-8"?>
<signCertResponse statusCode="ChallengeResponseRequired"
xmlns="http://schemas.microsoft.com/otpcep/1.0/protocol"/>
```

4.4 Invalid SignCert Request Example

The following example describes a **SignCert Request** message (section 2.2.2) that contains an invalid value for the **certRequest** attribute.

```
<?xml version="1.0" encoding="UTF-8"?>
<signCertRequest xmlns="http://schemas.microsoft.com/otpcep/1.0/protocol" certRequest="asdf"
oneTimePassword="Pa$$word1" username="domain1\user1"
xmlns:xsd="http://www.w3.org/2001/XMLSchema" xmlns:xsi="http://www.w3.org/2001/XMLSchema-
instance"/>
```

The following example describes the **SignCert Response** message (section 2.2.3) for the request that contains the invalid field value. The **statusCode** attribute equals OtherError.

```
<?xml version="1.0" encoding="UTF-8"?>
<signCertResponse certificate="" statusCode="OtherError"
xmlns="http://schemas.microsoft.com/otpcep/1.0/protocol"/>
```

5 Security

5.1 Security Considerations for Implementers

The One-Time Password Certificate Enrollment Protocol does not provide message-level signing or message-level encryption for either **SignCert Request** messages (section 2.2.2) or **SignCert Response** messages (section 2.2.3). Implementers can make use of available transport protection as available in HTTPS to provide security to the client/server interaction.

5.2 Index of Security Parameters

None.

6 Appendix A: Full XML Schema

For ease of implementation, the following is the full XML schema (XSD) for this protocol.

```
<?xml version="1.0" encoding="utf-8"?>
<!-- Copyright (c) Microsoft Corporation. All Rights Reserved. -->
<xs:schema targetNamespace="http://schemas.microsoft.com/otpcep/1.0/protocol"
  elementFormDefault="qualified"
  xmlns="http://schemas.microsoft.com/otpcep/1.0/protocol"
  xmlns:otpcep="http://schemas.microsoft.com/otpcep/1.0/protocol"
  xmlns:xs="http://www.w3.org/2001/XMLSchema">

  <xs:import namespace="http://schemas.microsoft.com/otpcep/1.0/common" />

  <xs:simpleType name="SignCertStatusCode">
    <xs:restriction base="xs:string">
      <xs:enumeration value="Success"/>
      <xs:enumeration value="AuthenticationError" />
      <xs:enumeration value="ChallengeResponseRequired" />
      <xs:enumeration value="OtherError" />
    </xs:restriction>
  </xs:simpleType>

  <xs:simpleType name="CertificateRequestBase64Binary">
    <xs:restriction base="xs:base64Binary">
    </xs:restriction>
  </xs:simpleType>

  <xs:simpleType name="CertificateBase64Binary">
    <xs:restriction base="xs:base64Binary">
    </xs:restriction>
  </xs:simpleType>

  <xs:complexType name="SignCertRequest">
    <xs:attribute name="username" type="xs:string" use="required" />
    <xs:attribute name="oneTimePassword" type="xs:string" use="required" />
    <xs:attribute name="certRequest" type="otpcep:CertificateRequestBase64Binary"
  use="required" />
  </xs:complexType>

  <xs:complexType name="SignCertResponse">
    <xs:sequence>
      <xs:element name="IssuingCA" type="xs:anyURI" minOccurs="0" maxOccurs="unbounded" />
    </xs:sequence>
    <xs:attribute name="statusCode" type="otpcep:SignCertStatusCode" use="required" />
    <xs:attribute name="SignedCertRequest" type="otpcep:CertificateBase64Binary"
  use="optional" />
  </xs:complexType>

  <xs:simpleType name="SignedCertBase64Binary">
    <xs:restriction base="xs:base64Binary">
    </xs:restriction>
  </xs:simpleType>

  <xs:element name="signCertRequest" type="otpcep:SignCertRequest" />
  <xs:element name="signCertResponse" type="otpcep:SignCertResponse" />
</xs:schema>
```


7 (Updated Section) Appendix B: Product Behavior

The information in this specification is applicable to the following Microsoft products or supplemental software. References to product versions include updates to those products.

The following table shows the relationships between Microsoft product versions or supplemental software and the roles they perform.

Windows Release	Client Role	Server Role
Windows 7 operating system	Yes	No
Windows 8 operating system	Yes	No
Windows Server 2012 operating system	No	Yes
Windows 8.1 operating system	Yes	No
Windows Server 2012 R2 operating system	No	Yes
Windows 10 operating system	Yes	No
Windows Server 2016 operating system	No	Yes
Windows Server operating system	No	Yes
Windows Server 2019 operating system	No	Yes
Windows Server 2022 operating system	No	Yes
Windows 11 operating system	Yes	No

Exceptions, if any, are noted in this section. If an update version, service pack or Knowledge Base (KB) number appears with a product name, the behavior changed in that update. The new behavior also applies to subsequent updates unless otherwise specified. If a product edition appears with the product version, behavior is different in that product edition.

Unless otherwise specified, any statement of optional behavior in this specification that is prescribed using the terms "SHOULD" or "SHOULD NOT" implies product behavior in accordance with the SHOULD or SHOULD NOT prescription. Unless otherwise specified, the term "MAY" implies that the product does not follow the prescription.

<1> Section 1.5: The Microsoft CA implementation uses the certificate template as described in [MSFT-TEMPLATES].

<2> Section 3.1.3: On Windows, implementations depend on the administrator for configuration. The administrator configures this manually or by using Group Policy as specified in [MS-GPNRPT].

<3> Section 3.1.5.2: On Windows implementations, if the **statusCode** attribute equals Challenge, an error message is displayed to the user.

<4> Section 3.2.3: On Windows, implementations depend on the administrator for configuration. The administrator configures this manually or by using Group Policy as specified in [MS-GPNRPT].

8 Change Tracking

This section identifies changes that were made to this document since the last release. Changes are classified as Major, Minor, or None.

The revision class **Major** means that the technical content in the document was significantly revised. Major changes affect protocol interoperability or implementation. Examples of major changes are:

- A document revision that incorporates changes to interoperability requirements.
- A document revision that captures changes to protocol functionality.

The revision class **Minor** means that the meaning of the technical content was clarified. Minor changes do not affect protocol interoperability or implementation. Examples of minor changes are updates to clarify ambiguity at the sentence, paragraph, or table level.

The revision class **None** means that no new technical changes were introduced. Minor editorial and formatting changes may have been made, but the relevant technical content is identical to the last released version.

The changes made to this document are listed in the following table. For more information, please contact dochelp@microsoft.com.

Section	Description	Revision class
7 Appendix B: Product Behavior	Updated for this version of Windows Client.	Major

9 Index

A

- Abstract data model
 - client 16
 - server 17
- Accepted SignCert Request message example 20
- Applicability 12

C

- Capability negotiation 12
- Challenged SignCert Request message example 22
- Change tracking 26
- Client
 - abstract data model 16
 - higher-layer triggered events 16
 - initialization 16
 - message processing
 - creating SignCert Request message 16
 - SignCert Response message 17
 - other local events 17
 - sequencing rules
 - creating SignCert Request message 16
 - processing SignCert Response message 17
 - timer events 17
 - timers 16

D

- Data model - abstract
 - client 16
 - server 17

E

- Examples
 - accepted SignCert Request message 20
 - challenged SignCert Request message 22
 - invalid SignCert Request message 22
 - SignCert Request message with invalid credentials 21

F

- Fields - vendor-extensible 12
- Full XML schema 24

G

- Glossary 5

H

- Higher-layer triggered events
 - client 16
 - server 18

I

- Implementer - security considerations 23
- Index of security parameters 23
- Informative references 7

- Initialization
 - client 16
 - server 17
- Introduction 5
- Invalid SignCert Request message example 22

M

- Message processing
 - client
 - creating SignCert Request message 16
 - SignCert Response message 17
- Messages
 - Namespaces 13
 - Namespaces message 13
 - SignCert Request 13
 - SignCert Request message 13
 - SignCert Response 14
 - SignCert Response message 14
 - transport 13

N

- Namespaces message 13
- Normative references 7

O

- Other local events
 - client 17
 - server 19
- Overview (synopsis) 8

P

- Parameters - security index 23
- Preconditions 11
- Prerequisites 11
- Product behavior 25

R

- References 7
 - informative 7
 - normative 7
- Relationship to other protocols 11

S

- Security
 - implementer considerations 23
 - parameter index 23
- Sequencing rules
 - client
 - creating SignCert Request message 16
 - processing SignCert Response message 17
- Server
 - abstract data model 17
 - higher-layer triggered events 18
 - initialization 17
 - other local events 19
 - timer events 19
 - timers 17
- SignCert Request message 13

SignCert Request message with invalid credentials example 21
SignCert Response message 14
Standards assignments 12

T

Timer events
 client 17
 server 19
Timers
 client 16
 server 17
Tracking changes 26
Transport 13
Triggered events - higher-layer
 client 16
 server 18

V

Vendor-extensible fields 12
Versioning 12

X

XML schema 24