

[MS-OTPC]: One-Time Password Certificate Enrollment Protocol

Intellectual Property Rights Notice for Open Specifications Documentation

- **Technical Documentation.** Microsoft publishes Open Specifications documentation for protocols, file formats, languages, standards as well as overviews of the interaction among each of these technologies.
- **Copyrights.** This documentation is covered by Microsoft copyrights. Regardless of any other terms that are contained in the terms of use for the Microsoft website that hosts this documentation, you may make copies of it in order to develop implementations of the technologies described in the Open Specifications and may distribute portions of it in your implementations using these technologies or your documentation as necessary to properly document the implementation. You may also distribute in your implementation, with or without modification, any schema, IDL's, or code samples that are included in the documentation. This permission also applies to any documents that are referenced in the Open Specifications.
- **No Trade Secrets.** Microsoft does not claim any trade secret rights in this documentation.
- **Patents.** Microsoft has patents that may cover your implementations of the technologies described in the Open Specifications. Neither this notice nor Microsoft's delivery of the documentation grants any licenses under those or any other Microsoft patents. However, a given Open Specification may be covered by Microsoft [Open Specification Promise](#) or the [Community Promise](#). If you would prefer a written license, or if the technologies described in the Open Specifications are not covered by the Open Specifications Promise or Community Promise, as applicable, patent licenses are available by contacting iplg@microsoft.com.
- **Trademarks.** The names of companies and products contained in this documentation may be covered by trademarks or similar intellectual property rights. This notice does not grant any licenses under those rights. For a list of Microsoft trademarks, visit www.microsoft.com/trademarks.
- **Fictitious Names.** The example companies, organizations, products, domain names, email addresses, logos, people, places, and events depicted in this documentation are fictitious. No association with any real company, organization, product, domain name, email address, logo, person, place, or event is intended or should be inferred.

Reservation of Rights. All other rights are reserved, and this notice does not grant any rights other than specifically described above, whether by implication, estoppel, or otherwise.

Tools. The Open Specifications do not require the use of Microsoft programming tools or programming environments in order for you to develop an implementation. If you have access to Microsoft programming tools and environments you are free to take advantage of them. Certain Open Specifications are intended for use in conjunction with publicly available standard specifications and network programming art, and assumes that the reader either is familiar with the aforementioned material or has immediate access to it.

Revision Summary

Date	Revision History	Revision Class	Comments
12/16/2011	1.0	New	Released new document.
03/30/2012	1.0	No change	No changes to the meaning, language, or formatting of the technical content.
07/12/2012	2.0	Major	Significantly changed the technical content.
10/25/2012	2.0	No change	No changes to the meaning, language, or formatting of the technical content.
01/31/2013	2.0	No change	No changes to the meaning, language, or formatting of the technical content.
08/08/2013	3.0	Major	Significantly changed the technical content.

Contents

1 Introduction	5
1.1 Glossary	5
1.2 References	6
1.2.1 Normative References	6
1.2.2 Informative References	6
1.3 Overview	7
1.4 Relationship to Other Protocols	10
1.5 Prerequisites/Preconditions	10
1.6 Applicability Statement	11
1.7 Versioning and Capability Negotiation	11
1.8 Vendor-Extensible Fields	11
1.9 Standards Assignments	11
2 Messages	12
2.1 Transport	12
2.2 Message Syntax	12
2.2.1 Namespaces	12
2.2.2 SignCert Request	12
2.2.3 SignCert Response	13
3 Protocol Details	15
3.1 Client Details	15
3.1.1 Abstract Data Model	15
3.1.2 Timers	15
3.1.3 Initialization	15
3.1.4 Higher-Layer Triggered Events	15
3.1.5 Message Processing Events and Sequencing Rules	15
3.1.5.1 Creating A SignCert Request Message	15
3.1.5.2 Processing A SignCert Response Message	16
3.1.6 Timer Events	16
3.1.7 Other Local Events	16
3.2 Server Details	16
3.2.1 Abstract Data Model	16
3.2.2 Timers	16
3.2.3 Initialization	16
3.2.4 Higher-Layer Triggered Events	17
3.2.5 Message Processing Events and Sequencing Rules	17
3.2.5.1 Processing A SignCert Request Message	17
3.2.6 Timer Events	18
3.2.7 Other Local Events	18
4 Protocol Examples	19
4.1 Accepted SignCert Request Example	19
4.2 SignCert Request with Invalid Credentials Example	20
4.3 Challenged SignCert Request Example	21
4.4 Invalid SignCert Request Example	21
5 Security	23
5.1 Security Considerations for Implementers	23
5.2 Index of Security Parameters	23

6	Appendix A: Full XML Schema	24
7	Appendix B: Product Behavior	25
8	Change Tracking.....	26
9	Index	28

1 Introduction

The One-Time Password Certificate Enrollment Protocol was created for enhancing the network security in remote access connections. The protocol is using different components to increase the network security, such as using the **one-time password (OTP)** authentication mechanism. The OTP authentication mechanism provides enhanced security measures for remote clients connecting to a server, by using different passwords for each logon session. Another component used by the protocol is a short-lived **smart card** logon certificate template.

Sections 1.8, 2, and 3 of this specification are normative and can contain the terms MAY, SHOULD, MUST, MUST NOT, and SHOULD NOT as defined in RFC 2119. Sections 1.5 and 1.9 are also normative but cannot contain those terms. All other sections and examples in this specification are informative.

1.1 Glossary

The following terms are defined in [\[MS-GLOS\]](#):

Active Directory
CA
certificate template
certification authority (CA)
DirectAccess
enhanced key usage (EKU)
Group Policy
Hypertext Transfer Protocol (HTTP)
Hypertext Transfer Protocol over Secure Sockets Layer (HTTPS)
Kerberos
Key Distribution Center (KDC)
Public Key Cryptography Standards (PKCS)
public key infrastructure (PKI)
Remote Authentication Dial-In User Service (RADIUS)
Secure Sockets Layer (SSL)
server
smart card
Unicode
XML
XML namespace
XML Schema (XSD)

The following terms are specific to this document:

client: The sending endpoint of a Web services request message, and receiver of any resulting Web services response message.

key storage provider (KSP): A Cryptography API: Next Generation (CNG) component which can be used to create, delete, export, import, open and store keys.

one-time password (OTP): A password that is valid for only one logon session or transaction.

MAY, SHOULD, MUST, SHOULD NOT, MUST NOT: These terms (in all caps) are used as described in [\[RFC2119\]](#). All statements of optional behavior use either MAY, SHOULD, or SHOULD NOT.

1.2 References

References to Microsoft Open Specifications documentation do not include a publishing year because links are to the latest version of the documents, which are updated frequently. References to other documents include a publishing year when one is available.

A reference marked "(Archived)" means that the reference document was either retired and is no longer being maintained or was replaced with a new document that provides current implementation details. We archive our documents online [[Windows Protocol](#)].

1.2.1 Normative References

We conduct frequent surveys of the normative references to assure their continued availability. If you have any issue with finding a normative reference, please contact dochelp@microsoft.com. We will assist you in finding the relevant information. Please check the archive site, <http://msdn2.microsoft.com/en-us/library/E4BD6494-06AD-4aed-9823-445E921C9624>, as an additional source.

[MS-ADTS] Microsoft Corporation, "[Active Directory Technical Specification](#)".

[RFC1334] Lloyd, B., and Simpson, W., "PPP Authentication Protocols", RFC 1334, October 1992, <http://www.ietf.org/rfc/rfc1334.txt>

[RFC2119] Bradner, S., "Key words for use in RFCs to Indicate Requirement Levels", BCP 14, RFC 2119, March 1997, <http://www.rfc-editor.org/rfc/rfc2119.txt>

[RFC2315] Kaliski, B., "PKCS #7: Cryptographic Message Syntax Version 1.5", RFC 2315, March 1998, <http://www.ietf.org/rfc/rfc2315.txt>

[RFC2616] Fielding, R., Gettys, J., Mogul, J., et al., "Hypertext Transfer Protocol -- HTTP/1.1", RFC 2616, June 1999, <http://www.ietf.org/rfc/rfc2616.txt>

[RFC2818] Rescorla, E., "HTTP Over TLS", RFC 2818, May 2000, <http://www.ietf.org/rfc/rfc2818.txt>

[RFC2986] Nystrom, M., and Kaliski, B., "PKCS#10: Certificate Request Syntax Specification", RFC 2986, November 2000, <http://www.ietf.org/rfc/rfc2986.txt>

[XML] World Wide Web Consortium, "Extensible Markup Language (XML) 1.0 (Fourth Edition)", W3C Recommendation, August 2006, <http://www.w3.org/TR/2006/REC-xml-20060816/>

[XMLNS-2ED] World Wide Web Consortium, "Namespaces in XML 1.0 (Second Edition)", August 2006, <http://www.w3.org/TR/2006/REC-xml-names-20060816/>

[XMLSCHEMA1] Thompson, H.S., Beech, D., Maloney, M., and Mendelsohn, N., Eds., "XML Schema Part 1: Structures", W3C Recommendation, May 2001, <http://www.w3.org/TR/2001/REC-xmlschema-1-20010502/>

1.2.2 Informative References

[MSFT-OTP] Microsoft Corporation, "Strong Authentication with One-Time Passwords in Windows 7 and Windows Server 2008 R2", February 2011, [http://technet.microsoft.com/en-us/library/qq637807\(WS.10\).aspx](http://technet.microsoft.com/en-us/library/qq637807(WS.10).aspx)

[MSFT-TEMPLATES] Microsoft Corporation, "Implementing and Administering Certificate Templates in Windows Server 2003", July 2004, <http://technet2.microsoft.com/WindowsServer/en/library/c25f57b0-5459-4c17-bb3f-2f657bd23f781033.mspix>

If you have any trouble finding [MSFT-TEMPLATES], please check [here](#).

[MS-GLOS] Microsoft Corporation, "[Windows Protocols Master Glossary](#)".

[MS-GPNERPT] Microsoft Corporation, "[Group Policy: Name Resolution Policy Table \(NRPT\) Data Extension](#)".

[MS-PKCA] Microsoft Corporation, "[Public Key Cryptography for Initial Authentication \(PKINIT\) in Kerberos Protocol](#)".

1.3 Overview

The One-Time Password Certificate Enrollment Protocol is a stateless application-layer protocol that has one type of request from the **client** to the **server** (consisting of the user name, one-time password (OTP), and certificate enrollment request) and one type of response from the server to the client (consisting of the return code, an optional, signed certificate enrollment request (the same request that was sent by the client to the server), and an optional **certification authority (CA)** name to enroll the certificate from).

This protocol was created for OTP authentication with **DirectAccess** as described in [\[MSFT-OTP\]](#). It is used as part of the mechanism that transforms OTP credentials into a short-lived smart card logon certificate that is used for **Kerberos** smart card authentication. The certificate must be short-lived to minimize the risk of it being reused for future authentication sessions. It should be configured to the minimum lifetime supported by the **public key infrastructure (PKI)** in use. The following figure shows how the protocol is used in DirectAccess authentication.

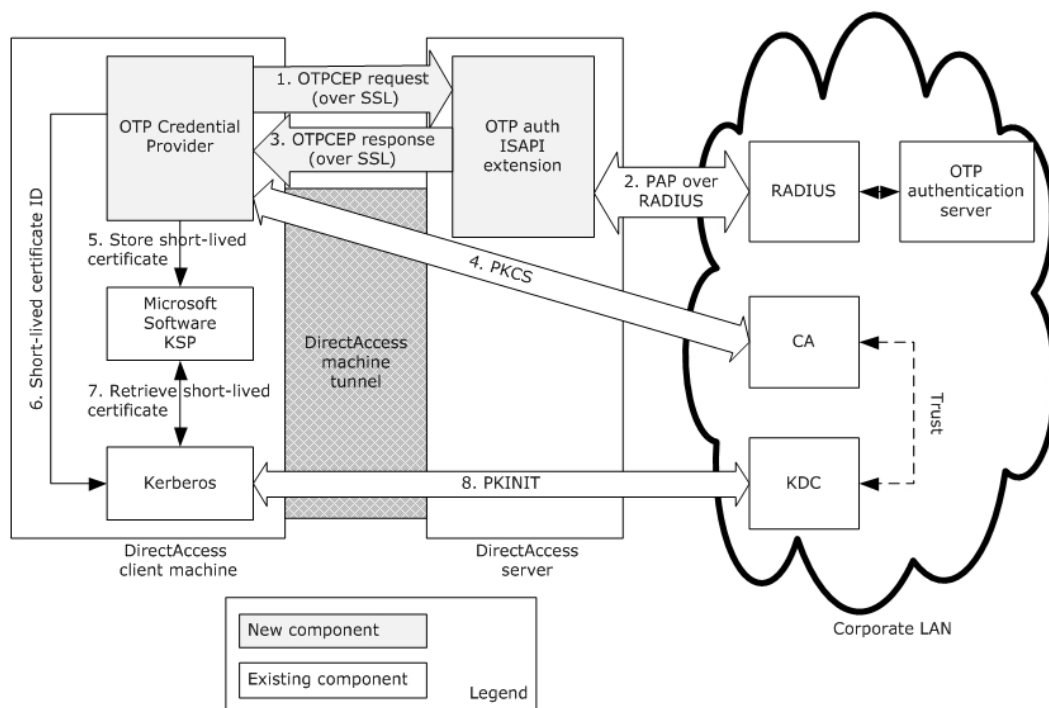


Figure 1: DirectAccess OTP authentication process

In the DirectAccess implementation of the One-Time Password Certificate Enrollment Protocol, the following events take place.

- The DirectAccess client sends OTP credentials along with a short-lived smart card logon certificate enrollment request to the DirectAccess server over a **Secure Sockets Layer (SSL)** tunnel, where both client and server are mutually authenticated by certificates.
- Then, the DirectAccess server communicates with an OTP authentication server using the Password Authentication Protocol (PAP) [\[RFC1334\]](#) over **Remote Authentication Dial-In User Service (RADIUS)** in order to validate the OTP credentials.
- Then, the DirectAccess server signs the certificate enrollment request with a dedicated signing certificate only the DirectAccess server possesses. After that, the signed certificate request along with the name of the CA from which the DirectAccess client should enroll the short-lived smart card logon certificate are sent to the DirectAccess client by using the OTPCE protocol.
- Then, the DirectAccess client communicates with the certification authority (CA) using a **Public Key Cryptography Standards (PKCS) #10** request [\[RFC2986\]](#) and a PKCS #7 response [\[RFC2315\]](#) in order to enroll a short-lived smart card logon certificate. The enrolled short-lived certificate is used by the PKINIT Protocol ([\[MS-PKCA\]](#)) to acquire a new Kerberos ticket from the **Key Distribution Center (KDC)** for the user.

The following figure shows a protocol message exchange of successful OTP credential validation by the OTP server and the subsequent signing of the certificate enrollment request by the server.

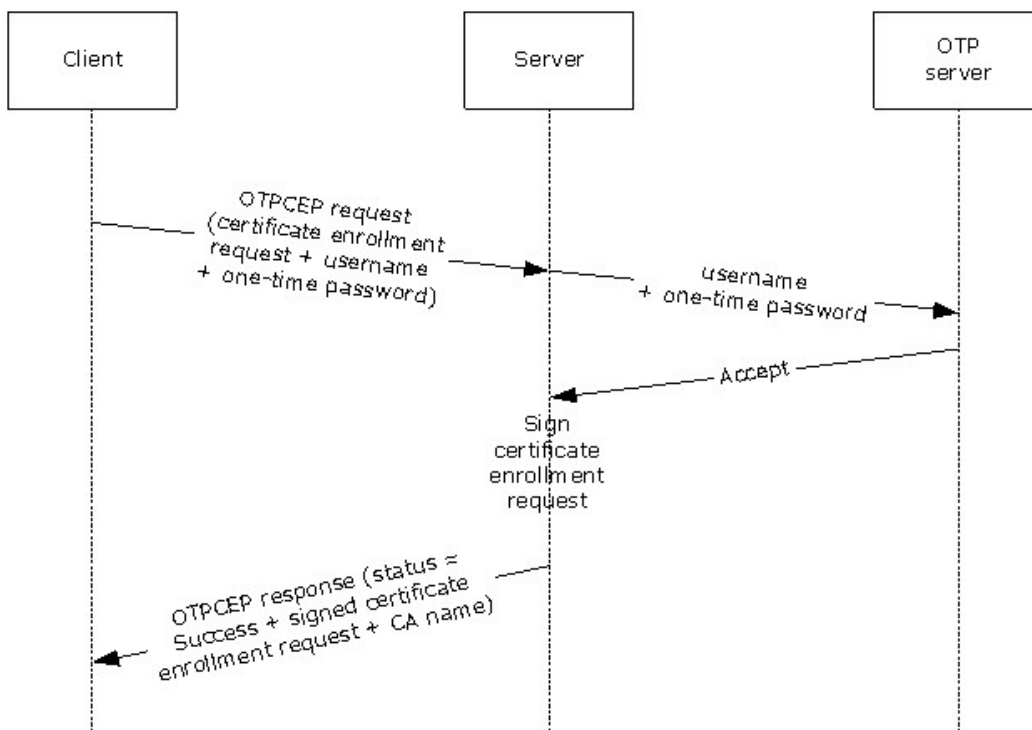


Figure 2: Successful sequence for certificate enrollment

The following figure shows a typical protocol message exchange in which invalid OTP credentials are rejected by the OTP server. In this case, the server returns an error and does not proceed with the signing of the certificate enrollment request.

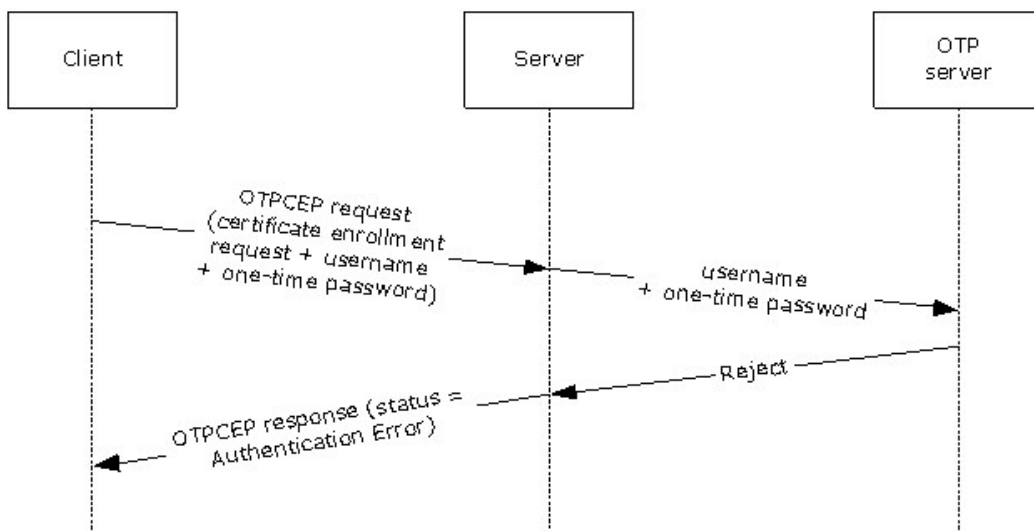


Figure 3: Typical sequence of a certificate enrollment with erroneous credentials

The following figure shows the use of the OTPCE protocol in Windows DirectAccess OTP authentication.

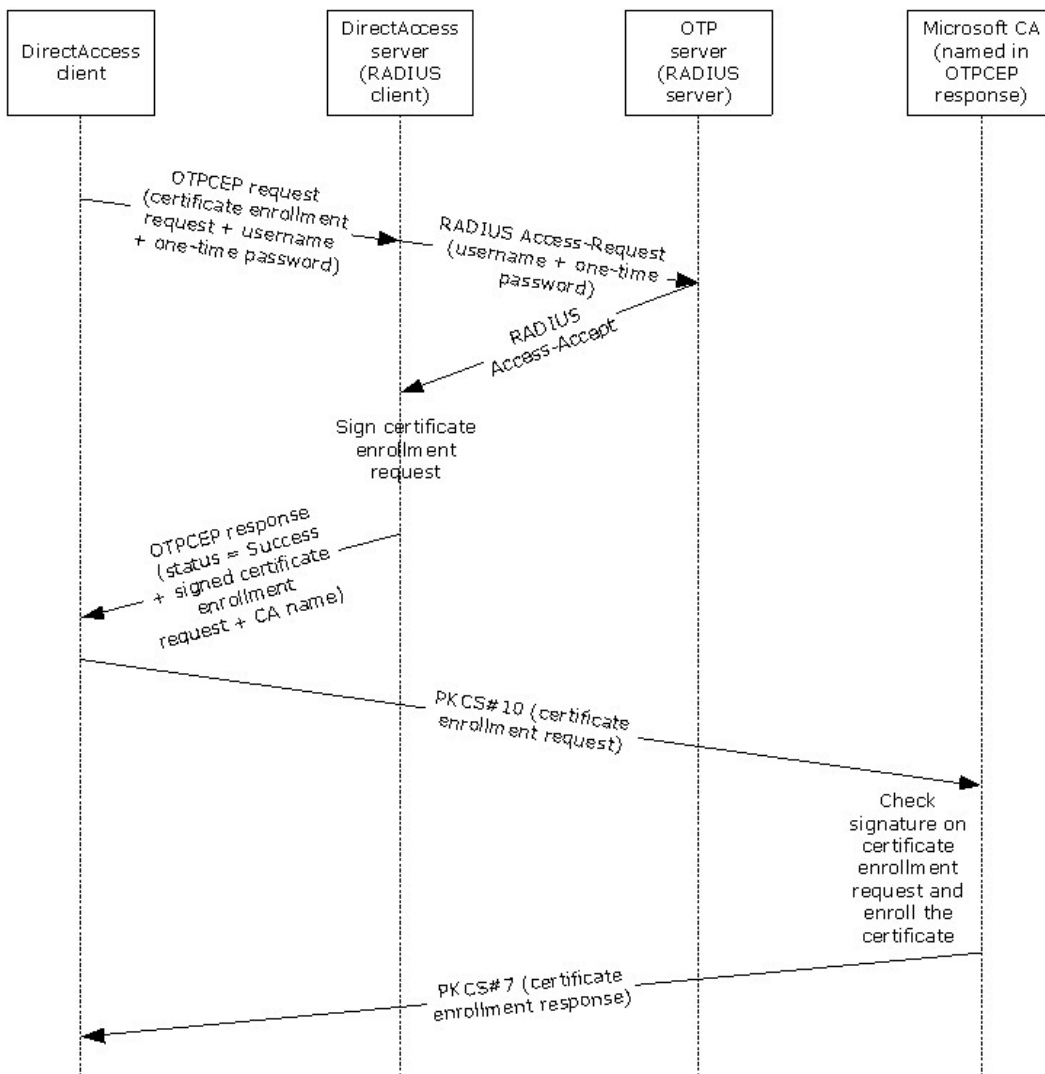


Figure 4: DirectAccess OTP authentication end to end flow

1.4 Relationship to Other Protocols

The One-Time Password Certificate Enrollment Protocol is a **Hypertext Transfer Protocol (HTTP)**-based protocol. Every protocol request is a single pair of HTTP POST and HTTP response messages. Failure to carry out the request due to server error is reported by an HTTP response code.

The parameters of the protocol's requests and responses are carried in **XML**-formatted body of the message. The full XML schema (XSD) is described in section [6](#).

1.5 Prerequisites/Preconditions

For One-Time Password Certificate Enrollment Protocol communication to begin, the prerequisite configuration is as follows:

1. The administrator sets up an OTP authentication solution from an OTP vendor that includes an OTP authentication server and hardware/software OTP tokens for end users.
2. The administrator establishes one or more implementation-specific [CA](#) servers, configures a new, unique application-policy **enhanced key usage (EKU)** in Active Directory, and configures two certificate templates on it:
 1. A short-lived smart card logon **certificate template**.
 2. A signing certificate template with the new, unique application-policy EKU.

The CA server requires permissions to enroll certificates by using this certificate template. The administrator grants users read and enroll permissions to the short-lived smart card logon certificate template. The administrator grants the OTPCEP server enroll and auto enroll permissions to the signing certificate template.

In addition, the CA should be configured to verify that any short-lived smart card logon certificate request is signed by the signing certificate.

1.6 Applicability Statement

The One-Time Password Certificate Enrollment Protocol was designed to support OTP authentication for DirectAccess.

The use of this protocol is appropriate as the basis for any network authentication scenario that involves sending a request with OTP credentials and a certificate enrollment request, and receiving a signed certificate enrollment request.

1.7 Versioning and Capability Negotiation

For versioning control, a proprietary HTTP header "X-OTPCEP-version" is introduced and is mandatory in both the request and response. It is required to have the value of "1.0".

1.8 Vendor-Extensible Fields

None.

1.9 Standards Assignments

None.

2 Messages

2.1 Transport

The One-Time Password Certificate Enrollment Protocol does not provide its own secure transport. It **MUST** be transmitted over a secured channel, for example, **Hypertext Transfer Protocol over Secure Sockets Layer (HTTPS)**, as specified in [\[RFC2818\]](#).

This protocol is encapsulated within and depends on HTTP, as specified in [\[RFC2616\]](#), for delivery of messages. The protocol does not impose any message retransmissions or other requirements on this transport.

2.2 Message Syntax

This section contains common definitions used by this protocol. The protocol is HTTP-based protocol. "Content-type" header is always set to Application/xml;charset=utf-8. The syntax of the definitions uses the XML schema as specified in [\[XMLSCHEMA1\]](#).

2.2.1 Namespaces

This specification defines and references various **XML namespaces** that are using the mechanisms specified in [\[XMLNS-2ED\]](#). Although this document associates a specific XML namespace prefix for each XML namespace that is used, the choice of any particular XML namespace prefix is implementation-specific and not significant for interoperability.

Prefixes and XML namespaces used in this specification are as follows:

Prefix	Namespace URI	Reference
Xs	http://www.w3.org/2001/XMLSchema	[XMLSCHEMA1]
Otpcep	http://schemas.microsoft.com/otpcep/1.0/protocol	

2.2.2 SignCert Request

The **SignCert Request** is the message sent by a client when the end user is asked to provide OTP credentials in order to perform OTP authentication.

The message **MUST** be a **Unicode** XML 1.0 document that uses the following XML namespace as its default:

<http://schemas.microsoft.com/otpcep/1.0/protocol>

The XML document **MUST** contain a **signCertRequest** element. The message **MUST NOT** include additional data before or after the XML document. The XML document **MAY** contain trailing whitespace as part of the encoded content, as specified in [\[XML\]](#) section 2.1.

```
<xs:element name="signCertRequest">
  <xs:complexType>
    <xs:attribute name="username" type="xs:string"
      use="required" />
    <xs:attribute name="oneTimePassword" type="xs:string"
      use="required" />
    <xs:attribute name="certRequest" type="otpcep:CertificateRequestBase64Binary"
      use="required" />
  </xs:complexType>
</xs:element>
```

```
</xs:complexType>
</xs:element>
```

The **signCertRequest** element contains the following attributes:

username: A NULL-terminated string that contains the user name.

oneTimePassword: A NULL-terminated string that contains the user's one-time credentials. The one-time credentials MUST contain an ever-changing one-time password (OTP) part. The one-time credentials MAY contain a static password (PIN) part.

certRequest: The certificate enrollment request in PKCS #10 format ([\[RFC2986\]](#)). The request MUST be created by using the certificate template as defined in section [1.5](#).

The request MUST be digitally signed with a valid signature, as specified in [\[RFC2986\]](#).

2.2.3 SignCert Response

A **SignCert Response** message is returned by the OTPCEP server as a response to a **SignCert Request** message (section [2.2.2](#)) received from the client.

The message MUST be a Unicode XML 1.0 document that uses the following XML namespace as its default:

<http://schemas.microsoft.com/otpcep/1.0/protocol>

The document MUST contain a **signCertResponse** element. The message MUST NOT include additional data before or after the XML document. The XML document MAY contain trailing whitespace as part of the encoded content, as specified in [\[XML\]](#) section 2.1.

```
<xs:element name="signCertResponse" >
  <xs:complexType>
    <xs:attribute name="IssuingCA" type="xs:anyURI" minOccurs="0" maxOccurs="unbounded" />

    <xs:attribute name="statusCode" type="otpcep:SignCertStatusCode"
      use="required" />
    <xs:attribute name="SignedCertRequest" type="otpcep:CertificateBase64Binary"
      use="optional" />
  </xs:complexType>
</xs:element >
```

The **signCertResponse** element contains the following attributes:

IssuingCA (optional): If the user credentials are valid and the statusCode attribute equals Success, the names of one or more CA servers from which the client should enroll the short-lived smart card certificate are included in the **SignCert Response** message. Otherwise, this field MUST be empty.

statusCode: Can be one of the following enumeration values.

Value	Meaning
Success	Certificate enrollment request was signed successfully.
AuthenticationError	User credentials validation failed.

Value	Meaning
ChallengeResponseRequired	User credentials were challenged.
OtherError	Other error occurred during the validation of the OTP credentials or during signing of the certificate enrollment request.

SignedCertRequest (optional): If the user credentials are valid and the **statusCode** attribute equals Success, a signed certificate enrollment request is included in the **SignCert Response** message. Otherwise, this field **MUST** be empty.

3 Protocol Details

3.1 Client Details

3.1.1 Abstract Data Model

This section describes a conceptual model of possible data organization that an implementation maintains to participate in this protocol. The described organization is provided to facilitate the explanation of how the protocol behaves. This document does not mandate that implementations adhere to this model as long as their external behavior is consistent with that described in this document.

Server Name: A null-terminated Unicode string that represents the name of the server the client can communicate with in order to authenticate the user and enroll certificates for accessing corporate resources. A list of strings representing available servers can be used for high availability.

OTP Certificate Template Name: A null-terminated string representing the name of the short-lived smart card certificate template that is in use.

3.1.2 Timers

None.

3.1.3 Initialization

The Abstract Data Model (ADM) elements defined in section [3.1.1](#) are initialized during the client startup. They are configured by the administrator [<2>](#) and stored in persistent storage. On client startup, the configuration is read from the persistent storage and set in the ADM elements.

3.1.4 Higher-Layer Triggered Events

The One-Time Password Certificate Enrollment Protocol is invoked when a user logs on to a client computer from outside the corporate network by using a username/password, smart card, or any other user credentials available for login, and then attempts to connect to a corporate resource using a connection that requires one-time password (OTP) authentication. The client **MUST** create and send a **SignCert Request** message (section [2.2.2](#)), as specified in section [3.1.5.2](#).

3.1.5 Message Processing Events and Sequencing Rules

3.1.5.1 Creating A SignCert Request Message

When the user performs an OTP authentication, the client performs the following steps.

1. The client creates a **SignCert Request** message (section [2.2.2](#)) with the following attributes:
 - The logon name of the user is set as the **username** attribute in the **SignCert Request** message. The name is in the domain\username format.
 - The one-time credentials that the user provides after the logon are set in the **oneTimePassword** attribute of the **SignCert Request** message. The **oneTimePassword** attribute contains an ever-changing OTP part. The **oneTimePassword** attribute MAY contain a static password (PIN) part. The existence of the PIN part and the PIN and one-time password concatenating format depend on the OTP vendor implementation.

- The client creates the certificate PKCS #10 request, as specified in [\[RFC2986\]](#), by using the template referred by the **OTP Certificate Template Name** ADM element, and sets it as the **CertRequest** attribute in the **SignCert Request** message.

2. The client sends the **SignCert Request** message to the server.

3.1.5.2 Processing A SignCert Response Message

Upon receiving the **SignCert Response** message (section [2.2.3](#)), the client MUST send an enrollment request to the Certification Authority (CA) server using the signed certificate request, and MUST store the certificate issued by the CA using a **key storage provider (KSP)** to be used by the upper layer for authentication, thus enabling connectivity to the corporate resources.

If the **statusCode** attribute does not equal Success, the client fails the operation. The client MAY [<3>](#) display an error message to the user indicating that the operation failed.

3.1.6 Timer Events

None.

3.1.7 Other Local Events

None.

3.2 Server Details

3.2.1 Abstract Data Model

This section describes a conceptual model of possible data organization that an implementation maintains to participate in this protocol. The described organization is provided to facilitate the explanation of how the protocol behaves. This document does not mandate that implementations adhere to this model as long as their external behavior is consistent with that described in this document.

OTP servers information: A structure that represents the OTP servers that are available for credentials validation on the server. The information in the structure MAY contain a server name or IP address, port, and other connectivity-related attributes. A sorted list of available servers can be used for high availability or load balancing.

CA servers list: A null-terminated Unicode string that represents the names of the CAs available for issuing OTP certificates. A sorted list of strings representing available CAs can be used for high availability or load balancing.

Signing Certificate Template Name: A null-terminated string representing the name of the signing certificate template that is in use.

3.2.2 Timers

None.

3.2.3 Initialization

The ADM elements defined in section [3.2.1](#) are initialized during the server startup. They are configured by the administrator [<4>](#) and stored in persistent storage. On server startup, the configuration is read from persistent storage and set in the ADM elements.

3.2.4 Higher-Layer Triggered Events

None.

3.2.5 Message Processing Events and Sequencing Rules

3.2.5.1 Processing A SignCert Request Message

Upon receiving a **SignCert Request** message (section [2.2.2](#)), the server performs the following steps:

1. Validate the certificate request received in the **SignCert Request** message:
 - The user name inside the certificate request MUST match the OTP user name received in the **username** attribute of the **SignCert Request** message. If the user name appears in multiple places in the certificate request, all instances MUST match the OTP user name.
 - The certificate template named in the user certificate request MUST NOT be empty and it MUST be the one that is configured in the server.
 - The certificate request MUST be digitally signed with a valid signature, as specified in [\[RFC2986\]](#).

If the validations fail, the server MUST stop processing the request and send a **SignCert Response** message (section [2.2.3](#)) to the client with a status of OtherError.
2. Validate that the user name is listed in **Active Directory**, as specified in [\[MS-ADTS\]](#). If the validation fails, the server MUST stop processing the request and send a **SignCert Response** message to the client with a status of AuthenticationError.
3. Validate user name, static password (if available), and one-time password with the first OTP server represented in the **OTP servers information** ADM element by using any protocol that the OTP server supports. If the validation fails, the server MUST stop the processing and send a **SignCert Response** message with an error status corresponding to the response received from OTP server:
 - If the OTP server cannot be reached, the server MUST send a status of OtherError to the client.
 - If the response from the OTP server is Access-Reject, the server MUST send a status message of AuthenticationError to the client.
 - If the response from OTP server is Challenge-Response, the server MUST send a status message of ChallengeResponseRequired to the client.
4. Sign the certificate request that was part of the **SignCert Request** message using the dedicated signing certificate. If this operation fails, the server MUST send a status message of OtherError to the client.
5. Verify that the list of CA servers in the **CA servers list** ADM element is not empty and pick the first CA server from the list. If this operation fails, the server MUST send a status message of OtherError to the client.
6. When a certificate is successfully signed, the server MUST create a **SignCert Response** message with the following values in it:
 - The **statusCode** attribute is set to Success.

- The **SignedCertRequest** attribute value is set to the signed certificate enrollment request.
- The **IssuingCA** attribute is set to the name of the first or several high-ranked CA servers from the CA servers list ADM element.

Then the server MUST sent the response back to the client.

3.2.6 Timer Events

None.

3.2.7 Other Local Events

None.

4 Protocol Examples

The following sections describe four examples of the **SignCert Request** message (section [2.2.2](#)) and the **SignCert Response** message (section [2.2.3](#)).

4.1 Accepted SignCert Request Example

The following example describes an accepted **SignCert Request** message (section [2.2.2](#)).

```
<?xml version="1.0" encoding="UTF-8"?>
<signCertRequest xmlns="http://schemas.microsoft.com/otpcep/1.0/protocol"
username="DOMAIN1\user1" oneTimePassword="Pa$$word1"
certRequest="MIIEjzCCA3cCAQAwfjETMBEGCgmSjOMT8ixkArkWA2NvbTEXMBUGCgmSjOMT8ixk&#xA; ArkWB2NvbXB
hbnkxFDASBgoJkiaJk/IsZAEZFgrj3JwMRcwFQYKZImiZPyLgQB&#xA; GRYHZG9tYwluMTEOMAwGA1UEAwFVXN1cnMx
DzANBgNVBAMMB1VzZXIgmTCCASiIw&#xA; DQYJKoZIhvcNAQEBBQADggEPADCCAQoCggEBAL/jy9vhdLG3yZJYw7VC6PG
FwA2c&#xA; yG7G9TaRX5z23o26qe8AQIsKsMkepv4qCv8xEs0Q4grSkEmTXOPbMsxeogzKt9/E&#xA; e17Hg0bdrGWyoS
16lykVB9gu8blx7LXmj4E2plrj0401Z5be3hVbPijuga6M8mh9&#xA; n3pDar5sbe8YY4gwNU9gtgWSg7N9FCIyRm9hj
F60M55totkCTa11+K4n+vL/71c&#xA; IxFUKqeYiHD8pbhEaKUESfGQ11TsXhUjMWCxJLJaec1CXkms2wky9fbbA8Xvfc
4j&#xA; V101XcaL7nns/yymmVZLig8LPimcvr8wY+t+Bbz1x7BpCpYap8b3+NeiZrzTUCAwEA&#xA; AaCCAacowGgYKkYBB
AGCNw0CAZEMFgo2LjIuODMxMS4yMFMGCSsGAQQBgjcvFDFG&#xA; MEQCAQUMIENMSUVOVDIuZG9tYwluMS5jb3JwLmNvb
XBhbnkuY29tDBBET01BSU4x&#xA; XENMSUVOVDIkDatMb2dvlVJLmV4ZTBmBgorBgEEAYI3DQICMVgVgIBAB50AE0A&
#xA; aQbJAHIAbwBzAG8AZgB0ACAAUwBvAGYAdAB3AGEAcgBlACAASwBlAHkAIABTAHQa&#xA; bwBYAGEAZwBlACAAUABY
AG8AdgBpAQAZQBpAwEAMIHuBgkqhkiG9w0BCQ4xgeAw&#xA; gd0wOwYJKwYBBAGCNxUHBC4wLAYkKwYBBAGCNxUIjCRR
39UihpMHL0hQ2CGG10V5&#xA; S4e7th2D1IhxAgFkAgEFMBUGA1UdJQQOMAwGCisGAQQBgjCUAgIwDgYDVR0PAQH/ &#xA;
;BAQDAgWgMB0GCsGAQQBgjcvCgQQA4wDAYKKwYBBAGCNxQCAjA5BgNVHREEMjAw&#xA; oC4GCisGAQQBgjCUAgOgIaw
edXN1cjFAZG9tYwluMS5jb3JwLmNvbXBhbnkuY29t&#xA; MB0GA1UdDgQWBQqn0jnsdeugKhWrG0ts4ucmuuRvzANBk
ghkiG9w0BAQUFAAOCA&#xA; AQEAn7/yTQYmP1sn+ktTRUwHdJQ7Pre1ccssn7hChTRm0GCarrS+KlID0WXDU8W&#xA; tY
AEXv8fa6MXFoYk4rrdtYzImgpukxh05H5XnuytTY6K3WqtIviDSFYNAhNCAUBN&#xA; 6sy09ydrXWJ21BBtsPlhoczkLE
mIsV/bRsdfrYh2rUtBP+P4s9TqRtZ3WtBsOaXH&#xA; Tqq4rUqGXCTarm2ESe9z0PlIroKVD9qv4ZjxXbpuId3NKYeso9
BNO9rtNS/unNBY&#xA; wI2mD6W7wigK/jQUpxuW1jhzCylGxvIxN9iZnq4VBIV7cJs5X70lTo1AIjM0NF1&#xA; kpEgw
EeOg7h3Mwqft6zPV9shBA=&#xA; "/>
```

The following example describes the **SignCert Response** message (section [2.2.3](#)) for the accepted request. The **statusCode** attribute equals Success.

```
<?xml version="1.0" encoding="UTF-8"?>
<signCertResponse xmlns="http://schemas.microsoft.com/otpcep/1.0/protocol"
statusCode="Success"
SignedCertRequest="MIINbgYJKoZIhvcNAQcCoIINXzCCDVsCAQMxCzAJBgUrDgMCGGUAMIIIF1wYIKwYB&#xA; BQUHD
AKggUUVB1IFETCCBQ0waTbnAgECBgorBgEEAYI3CgoBMVYwVAIBADADAGEB&#xA; MUowSAYJKwYBBAGCNxUUMTswOQIBB
QwREExLmRvbWVfbjEuY29ycC5jb2lwYW55&#xA; LmNvbQwMRE9NQULOMVxEQTEkDAh3M3dwLmV4ZTCBQjgggSWAGEBM
IIEjzCCA3cC&#xA; AQAwfjETMBEGCgmSjOMT8ixkArkWA2NvbTEXMBUGCgmSjOMT8ixkArkWB2NvbXBh&#xA; bnkxFDAS
BgoJkiaJk/IsZAEZFgrj3JwMRcwFQYKZImiZPyLgQBGRYHZG9tYwlu&#xA; MTEOMAwGA1UEAwFVXN1cnMxMzANBgNV
BAMMB1VzZXIgmTCCASiIwDQYJKoZIhvcNAQEBBQADggEPADCCAQoCggEBAL/jy9vhdLG3yZJYw7VC6PGFwA2c&#xA; yG7G
9TaRX5z2&#xA; 3o26qe8AQIsKsMkepv4qCv8xEs0Q4grSkEmTXOPbMsxeogzKt9/E&#xA; e17Hg0bdrGWyoS16lykVB9g
u8blx7LXmj4E2plrj0401Z5be3hVbPijuga6M8mh9n3pDar5sbe8YY4gwNU9gtgWSg7N9FCIyRm9hjQF60M55tot
kCTa11+K4n+vL/71c&#xA; IxFUKqeYiHD8&#xA; pbhEaKUESfGQ11TsXhUjMWCxJLJaec1CXkms2wky9fbbA8Xvfc4jV101Xca
L7nns&#xA; /yymmVZLig8LPimcvr8wY+t+Bbz1x7BpCpYap8b3+NeiZrzTUCAwEA&#xA; AaCCAacowGgYKkYBBAGCNw0CAZ
EMFgo2LjIuODMxMS4yMFMGCSsGAQQBgjcvFDFGMEQCAQUMIENM&#xA; SUVOVDIuZG9tYwluMS5jb3JwLmNvbXBhbnkuY2
9tDBBET01BSU4xXENMSUVOVDIk&#xA; DatMb2dvlVJLmV4ZTBmBgorBgEEAYI3DQICMVgVgIBAB50AE0AaQbJAHIAbw
Bz&#xA; AG8AZgB0ACAAUwBvAGYAdAB3AGEAcgBlACAASwBlAHkAIABTAHQa&#xA; bwBYAGEAZwBl&#xA; ACAAUABYAG8AdgBpA
QAZQBpAwEAMIHuBgkqhkiG9w0BCQ4xgeAwgd0wOwYJKwYB&#xA; BAGCNxUHBC4wLAYkKwYBBAGCNxUIjCRR39UihpMHL
oHq2CGG10V5S4e7th2D1Ihx&#xA; AgFkAgEFMBUGA1UdJQQOMAwGCisGAQQBgjCUAgIwDgYDVR0PAQH/BAQDAgWgMB0G&
#xA; CSsGAQQBgjcvCgQQA4wDAYKKwYBBAGCNxQCAjA5BgNVHREEMjAw&#xA; oC4GCisGAQQBgjCUAgOgIawedXN1cjFAZG9tYwlu
MS5jb3JwLmNvbXBhbnkuY29tMB0GA1UdDgQWBQqn0jnsdeugKhWrG0ts4ucmuuRvzANBghkiG9w0BAQUFAAOCAQEA
n7/yTQYm&#xA; P1sn+ktTRUwHdJQ7Pre1ccssn7hChTRm0GCarrS+KlID0WXDU8WtYAEXv8fa6MX&#xA; FoYk4rrdtYz
Imgpukxh05H5XnuytTY6K3WqtIviDSFYNAhNCAUBN6sy09ydrXWJ2&#xA; 1BBtsPlhoczkLEmIsV/bRsdfrYh2rUtBP+P4s9TqRtZ3WtBsOaXH
Tqq4rUqGXCTarm2ESe9z0PlIroKVD9qv4ZjxXbpuId3NKYeso9BNO9rtNS/unNBYwI2mD6W7wigK&#xA; /jQUpxuW1jhzCylGxvIxN9iZnq4VBIV7cJs5X70lTo1AIjM0NF1kpEgwEeOg7h3&#xA; Mw
qft6zPV9shBDAAMACggWbMIIF1zCCBH+gAwIBAgIKYv+kUAAAAAAAAQDANBgkq&#xA; hkiG9w0BAQUFAADByMREwEQYKZ
```

```
ImiZPyLGQBGryDY29tMrcwFQYKcZImiZPyLgQB&#xA;GRYHY29tCGFueTEUMBIGcgmSjOmT8ixkArkWbGnvcnAxzFzAVBg
oJkiaJk/IszAEZ&#xA;FgdKb21haW4xMRMwEQYDVQDEWpSb290Q0EtREMxMB4XDTEyMDQxMDEwMjgNlOx&#xA;DTEyM
DQxMjEwMjgNlOwADCCASiWdQYJKoZIhvcNAQEBBQADggEPADCCAQoCggEB&#xA;ALMeQgmLbcP2pYDav6ZndelJbuS/D
wz3DxVRRZrgB7u9xK/vM8uJLVbkOeXB3yvr&#xA;WwgoZ/n2MPqgb/SFAVnRcT/zugY7myGQggqP08TP4Ds7M4oPzKfL+G
vm30dpc1UWK&#xA;2alz+FqJ00hL5BetIsr8pR8aEtC6CGF+ZovmLgQaPmctu0izT1A9TUj60UyHrNvY&#xA;tPRcqWRM
HAVPZgrl+ccceUBM8gSLQzFrI3JCA2WrRBVepEwQ7DaLmN52KnOMnRaWx&#xA;4uLRtS9c+HgiLYjWhz2ZAel1UL+1C5by
ofUKyKuxymlZyAK8htG6ZjcpblgJ+tHp&#xA;Bo/H9LqeXxv1hgM1iaklRj8CAwEAAAOCAp8wggKbMdsGCSSGAQQBggjcv
BwQuMCwG&#xA;JCSGAQQBggjcvCI3EA9/VIoaZhy6B6tgthtT1eUuBv/1bhnObdQIBZAIbAjAVBgnV&#xA;HSUEDjAMBgo
rBgEAYI3UQEBA4GA1UdDwEB/wQEAWIHGDADBgkrBgEAYI3FQoE&#xA;EDAOMAAGCisGAQQBggjdrAQEWHQYDVR0BBY
EFJlB1tqQ0AV4x48mx6N5PIYAnUg&#xA;MB8GA1UdIwYMBaAFKBjOfXgEOVQXMoEy3jGrNnwhuHzMIHXBGNVHR8Egc8
wgcw&#xA;gcmgagcaggOCGcBsZGFwOi8vL0NOPVjvb3RDQSlEQzEsQ049REMxLENOPUNEUCx&#xA;Tj1QdWJsaWMLMj
BLZxk1MjBTZXJ2aWN1cyxDTj1TZXJ2aWN1cyxDTj1Db25maWd1&#xA;cmF0aW9uLERDPWRvbnRwYyE9REM9Y29ycCxEQz
1jb21wYW55LERDPWNvbT9jZXJ0&#xA;aWZpY2F0ZVJldm9jYXRpb25MaXN0P2Jhc2U/b2JqZWNoQ2xhc3M9Y1JMRGlzdH
Jp&#xA;YnV0aW9uUG9pbmQwgc8GCCsGAQUFBwEBBIHClMIG/MIG8BgggrBgEFBQcwoAoaBr2xk&#xA;YXA6Ly8vQ049Um9vd
ENBLURDMSxDTj1BSUESQ049UHVibGljJTIwS2V5JTIwU2Vy&#xA;dm1jZXMsQ049U2Vydm1jZXMsQ049Q29uZmlndXJhd
GlvbixEQz1kb21haW4xLERD&#xA;PWNvcnAsREM9Y29tCGFueSxEQz1jb20/Y0FDZXJ0aWZpY2F0ZT9iYXNlP29iamVj&
#xA;dENsYXNzPWN1cnRpmjYXRpb25BdXRob3JpdHkwKgYDVR0RAQH/BCAwHoIcREx&#xA;LmRvbWFPbjEuY29ycC5j
b21wYW55LmNvbTANBgkqhkiG9w0BAQUFAAOCAQEANqGM&#xA;G1cnVQxFSw9/YRyMAGatUG2YnqrE6IQMEeLGuV2XoHv
QFwyX43+58h0rlmNdrVt&#xA;MQ6VvzswZ1gFUZBzUJ3YfugQNR8IAWd7XKqYTcRj8G1cTEPvU7XecPmesXuYzvop&#xA
;NuTqP6R10iAimv3H7Y8qyVcb9m6AWZkmfR3hLXgBBk0yhMLsi2MogmEo07wuwS&#xA;owbikHqXGamlflwr0RqmcV
C0yWS+FDgTJ3BNatQGoHnLCGH7/2fBnIxDcD8vgc&#xA;amtD1ZkvvjGdr8uhD2oKtbVSj/U7z/VbGzgtOtofhtrqpb
0uVrAZQ/ChAorbQOQ&#xA;tEYEaRoefOskvHqK7zGCAoEwzYCAQEWIjAdMRswGQYJKwYBBAGCNuJEWEdW1t&#xA;eS
BTaWduZXICAQAwCQYFKw4DAhOFAKA+MBcGCSqGSIB3DQEJAZeKbGgrBgEFBQcM&#xA;AjAjBgkqhkiG9w0BCQQxfgQUnU
MoaOCcmKMAyC19SWFV0Y41918wDAYIKwYBBQUH&#xA;BgIFAAQUUQKxULM8spZptYmlzo4u8cPm8r4wggHkAgEBMIGAMH
IxExARBgoJkiaJk/IszAEZFGNjb20xZzAVBgoJkiaJk/IszAEZFGdjb21wYW55MRQwEgYKcZImiZPy&#xA;LQGBG
RYEY29ycDEXMBUGCgmSjOmT8ixkArkWb2RvbWFPbjExEzARBgNVBAMTC1Jv&#xA;b3RDQSlEQzECCMFpFAAAAAAAAAEAwC
QYFKw4DAhOFAKA+MBcGCSqGSIB3DQEJAZeK&#xA;BggrBgEFBQcMAjAjBgkqhkiG9w0BCQQxfgQUnUMoaOCcmKMAyC19S
WFV0Y41918w&#xA;DQYJKoZIhvcNAQEBBQAEggEAipLgV8ke7ktQzupRn93FMrp+5V3UPqdbSI7UVWq2&#xA;CUTr49K2
HHTCpNfQFgCdnrEWkHvunoGsZllvHQAviOmRc8RK9Q9xM+QM0XyAu25&#xA;Ydx6ZqroF9f+vZdkPdmAeVLuxRe9CAFD
95RjGGTR59EJTIjwp43LUYyaXG7eGjVi&#xA;Y7yQuYN10+HUyMbu0yPR2DkOtK7NHfmVZHu6Y0yQarjhMuHGLUn6Rmqw
V8bW5HAQ&#xA;4bF0K1CNxpGhtbCueCgisN0S1ig9P/rcHsi73fEdpuN55CIB/ACzLVxA3yQCz/s2&#xA;HxFXnepVhJb
HLPG187oaTjS4aDQaC3PxLHoltFs3UZnAbw=&#xA; "><IssuingCA
xmlns="http://schemas.microsoft.com/otpcep/1.0/protocol">Dc1.domain1.corp.company.com\RootCA-
Dc1</IssuingCA></signCertResponse>
```

4.2 SignCert Request with Invalid Credentials Example

The following example describes a **SignCert Request** message (section [2.2.2](#)) with an authentication error, where the user credentials validation failed.

```
<?xml version="1.0" encoding="UTF-8"?>
<signCertRequest xmlns="http://schemas.microsoft.com/otpcep/1.0/protocol"
certRequest="MIEIelzCCA38CAQAwfjETMBEGCgmSjOmT8ixkArkWb2NvbTEXMBUGCgmSjOmT8ixk
ArkWb2NvbXBhbnkxZDASBgoJkiaJk/IszAEZFGNjb20xZzAVBgoJkiaJk/IszAEZFGdjb21wYW55MRQwEgYKcZImiZPyLgQB
GRYHZG9tYWluMTEOMAwGA1UEAwFVXN1cnMxZDzANBgNVBAMMB1VzZXIgmTCCASiW
dQYJKoZIhvcNAQEBBQADggEPADCCAQoCggEBBAK79jEXP6OFccV9x0+mH22Up+56X
TLHLomp1iu/iH+NOUMj95qqKtqstUCjM2ij/0lMYTp3Npx/Z+FrDCJ1o/83x1Adi
o/Y6DkgiAxt268adVKQ+WgZjVB1N8LsJmOEj1+9zXKUsnJIP4JCHgmAwxr/Ok2
vxw4EpLcI97Lr5JmkpIsm5k9bTxJCCzdYptAW889gFY0dXHVeg9wZU3jEKyc0172X
cJSvgMdxuq3d+/cgdz6DAkVeP2NTR6tzeCY4gVMFQ120IfylKZFkKIFBTuBC/jv
Ionbb0TSznshInSvof610cylJUzLjhcqq+f00WXPuY2QNym1natV4LaCW6sCAwEA
AaCCAdIwGgYKKwYBBAGCNw0CAzEMFgo2LjIuODA1OC4yMFwGCSsGAQQBggjcvDFDP
ME0CAQUmIENMSUVOVDIuzG9tYWluMS5jb3JwLmNvbXBhbnkuY29tDA1ET01BSU4x
XHVzZXIxBDBUZXN0RXZlbnRmB2dCYWRDZXJ0LmV4ZTBmBgorBgEAYI3DQICMvgw
VgIBAB50AE0AaQBJAHIAbwBzAG8AZgB0ACAAUwBvAGYAdAB3AGEAcgBlACAAwB1
AHkAIABTAHQAbwByAGEAZwBlACAAUABYAG8AdgBpAGQAZQByAwEAMIHtBgkqhkiG
9w0BCQ4xgd8wgdwOgYJKwYBBAGCNxUHBC0wKwYjKwYBBAGCNxUIjcrR39UihpmH
LoHq2CGG1OV5S7SgJYfGrhQCAWQCAQMfQYDVR0lBA4wDAYKKwYBBAGCNxQCAjAO
BgNVHQ8BAf8EBAMCBAwAHQYJKwYBBAGCNxUKBBAdwJAMBgorBg" oneTimePassword="aPa$$word1"
username="domain1\user1" xmlns:xsd="http://www.w3.org/2001/XMLSchema"
xmlns:xsi="http://www.w3.org/2001/XMLSchema-instance"/>
```

The following example describes the **SignCert Response** message (section [2.2.3](#)) for the request that contained invalid data. The **statusCode** attribute equals **AuthenticationError**.

```
<?xml version="1.0" encoding="UTF-8"?>
<signCertResponse statusCode="AuthenticationError"
xmlns="http://schemas.microsoft.com/otpcep/1.0/protocol"/>
```

4.3 Challenged SignCert Request Example

The following example describes a **SignCert Request** message (section [2.2.2](#)) that is challenged by the OTP server.

```
<?xml version="1.0" encoding="UTF-8"?>
<signCertRequest xmlns="http://schemas.microsoft.com/otpcep/1.0/protocol"
certRequest="MIIEI1zCCA38CAQAwfjETMBEGCgmSjOmT8ixkARKWA2NvbTEXMBUGCgmSjOmT8ixk
ARKWB2NvbXBhbnkxZDASBgoJkiaJk/IsZAEZFgRjb3JwMRcwFQYKCCZImiZPyLGQB
GRYHZG9tYWluMTEOMAwGA1UEAwVFXNlcnMxDzANBgNVBAMMB1VzZXIgmTCCASiW
DQYJKoZIhvcNAQEBBQADggEPADCCAQoCggEBBALA9+uJTDQSiAvW3n4hJZ6Eec89G
bje+bc9Zsny019Wn/qffppXAjOKp4g1Bn/DUJNYEtFUL0eeNZG2qv3ZAsplchiAq
03FcEblAEyz4hVsf/bAF83Snz08m2/DZONL4pMd0RLf3Knu7ERGuJQ1/pDKUMU1t
NOM6qDM2nAT/OpsPjcfOD7W7LlPFH8sDzFgcipPQ237aoAIw2c7coott7gg8CwDN
k6Dccmt5ThD9KWYveDzXSMYfGH/+P6GhFHMZDf74lzegSahIgrTFiGxc3tnyr8e5
MLEnHDMntJP83yrSLmlx3oVzdhujtMsD/euz56K3ltz+f7Poji7mLBip4HECAwEA
AaCCAdIwGgYKkwyBBAGCNw0CAzEMFgo2LjIuODA1OC4yMFwGCSsGAQQBgjcVFDFP
ME0CAQUMIENMSUVOVDIuZG9tYWluMS5jb3JwLmNvbXBhbnkuY29tDA1ET01BSU4x
XHVzZXIxDG9tZXN0RXZlbnRmb2dCYWRDZXJ0LmV4ZTBmBgorBgEEAYI3DQICMVGw
VgIBAB50AE0AaQBjAHIAbWZAG8AZgB0ACAAUwBvAGYAdAB3AGEAcgBlACAASwBl
AHkAIABTAHQAbwByAGEAZwBlACAUAUByAG8AdgBpAGQAZQByAwEAMIHtBkgqhkiG
9w0BCQ4xgd8wgdwOgYJKwYBBAGCNxUHBCOwKwYjKwYBBAGCNxUIjcRr39UihpmH
LoHq2CGG1OV5S7SgJYfGrhQCAWQCAQMwFQYDVR0lBA4wDAYKKwYBBAGCNxQCAjAO
BgNVHQ8BAf8EBAMCBaAwHQYJKwYBBAGCNxUKBBawDjAMBgorBgEE" oneTimePassword="05278361"
username="domain1\user1" xmlns:xsd="http://www.w3.org/2001/XMLSchema"
xmlns:xsi="http://www.w3.org/2001/XMLSchema-instance"/>
```

The following example describes the **SignCert Response** message (section [2.2.3](#)) for the challenged request. The **statusCode** attribute equals **ChallengeResponseRequired**.

```
<?xml version="1.0" encoding="UTF-8"?>
<signCertResponse statusCode="ChallengeResponseRequired"
xmlns="http://schemas.microsoft.com/otpcep/1.0/protocol"/>
```

4.4 Invalid SignCert Request Example

The following example describes a **SignCert Request** message (section [2.2.2](#)) that contains an invalid value for the **certRequest** attribute.

```
<?xml version="1.0" encoding="UTF-8"?>
<signCertRequest xmlns="http://schemas.microsoft.com/otpcep/1.0/protocol" certRequest="asdf"
oneTimePassword="Pa$$word1" username="domain1\user1"
xmlns:xsd="http://www.w3.org/2001/XMLSchema" xmlns:xsi="http://www.w3.org/2001/XMLSchema-
instance"/>
```

The following example describes the **SignCert Response** message (section [2.2.3](#)) for the request that contains the invalid field value. The **statusCode** attribute equals **OtherError**.

```
<?xml version="1.0" encoding="UTF-8"?>  
<signCertResponse certificate="" statusCode="OtherError"  
xmlns="http://schemas.microsoft.com/otpcep/1.0/protocol"/>
```

5 Security

5.1 Security Considerations for Implementers

The One-Time Password Certificate Enrollment Protocol does not provide message-level signing or message-level encryption for either **SignCert Request** messages (section [2.2.2](#)) or **SignCert Response** messages (section [2.2.3](#)). Implementers can make use of available transport protection as available in HTTPS to provide security to the client/server interaction.

5.2 Index of Security Parameters

None.

6 Appendix A: Full XML Schema

For ease of implementation, the following is the full XML schema (XSD) for this protocol.

```
<?xml version="1.0" encoding="utf-8"?>
<!-- Copyright (c) Microsoft Corporation. All Rights Reserved. -->
<xs:schema targetNamespace="http://schemas.microsoft.com/otpcep/1.0/protocol"
  elementFormDefault="qualified"
  xmlns="http://schemas.microsoft.com/otpcep/1.0/protocol"
  xmlns:otpcep="http://schemas.microsoft.com/otpcep/1.0/protocol"
  xmlns:xs="http://www.w3.org/2001/XMLSchema">

  <xs:import namespace="http://schemas.microsoft.com/otpcep/1.0/common" />

  <xs:simpleType name="SignCertStatusCode">
    <xs:restriction base="xs:string">
      <xs:enumeration value="Success"/>
      <xs:enumeration value="AuthenticationError" />
      <xs:enumeration value="ChallengeResponseRequired" />
      <xs:enumeration value="OtherError" />
    </xs:restriction>
  </xs:simpleType>

  <xs:simpleType name="CertificateRequestBase64Binary">
    <xs:restriction base="xs:base64Binary">
    </xs:restriction>
  </xs:simpleType>

  <xs:simpleType name="CertificateBase64Binary">
    <xs:restriction base="xs:base64Binary">
    </xs:restriction>
  </xs:simpleType>

  <xs:complexType name="SignCertRequest">
    <xs:attribute name="username" type="xs:string" use="required" />
    <xs:attribute name="oneTimePassword" type="xs:string" use="required" />
    <xs:attribute name="certRequest" type="otpcep:CertificateRequestBase64Binary"
  use="required" />
  </xs:complexType>

  <xs:complexType name="SignCertResponse">
    <xs:sequence>
      <xs:element name="IssuingCA" type="xs:anyURI" minOccurs="0" maxOccurs="unbounded" />
    </xs:sequence>
    <xs:attribute name="statusCode" type="otpcep:SignCertStatusCode" use="required" />
    <xs:attribute name="SignedCertRequest" type="otpcep:CertificateBase64Binary"
  use="optional" />
  </xs:complexType>

  <xs:simpleType name="SignedCertBase64Binary">
    <xs:restriction base="xs:base64Binary">
    </xs:restriction>
  </xs:simpleType>

  <xs:element name="signCertRequest" type="otpcep:SignCertRequest" />
  <xs:element name="signCertResponse" type="otpcep:SignCertResponse" />
</xs:schema>
```


7 Appendix B: Product Behavior

The information in this specification is applicable to the following Microsoft products or supplemental software. References to product versions include released service packs:

- Windows 8 operating system
- Windows Server 2012 operating system
- Windows 8.1 operating system
- Windows Server 2012 R2 operating system

Exceptions, if any, are noted below. If a service pack or Quick Fix Engineering (QFE) number appears with the product version, behavior changed in that service pack or QFE. The new behavior also applies to subsequent service packs of the product unless otherwise specified. If a product edition appears with the product version, behavior is different in that product edition.

Unless otherwise specified, any statement of optional behavior in this specification that is prescribed using the terms SHOULD or SHOULD NOT implies product behavior in accordance with the SHOULD or SHOULD NOT prescription. Unless otherwise specified, the term MAY implies that the product does not follow the prescription.

[<1> Section 1.5:](#) The Microsoft CA implementation uses the certificate template as described in [\[MSFT-TEMPLATES\]](#).

[<2> Section 3.1.3:](#) The Windows implementation depends on the administrator for configuration. The administrator configures this manually or by using **Group Policy** as specified in [\[MS-GPNRPT\]](#).

[<3> Section 3.1.5.2:](#) In the Windows implementation, if the **statusCode** attribute equals Challenge, an error message is displayed to the user.

[<4> Section 3.2.3:](#) The Windows implementation depends on the administrator for configuration. The administrator configures this manually or by using Group Policy as specified in [\[MS-GPNRPT\]](#).

8 Change Tracking

This section identifies changes that were made to the [MS-OTPC] protocol document between the January 2013 and August 2013 releases. Changes are classified as New, Major, Minor, Editorial, or No change.

The revision class **New** means that a new document is being released.

The revision class **Major** means that the technical content in the document was significantly revised. Major changes affect protocol interoperability or implementation. Examples of major changes are:

- A document revision that incorporates changes to interoperability requirements or functionality.
- An extensive rewrite, addition, or deletion of major portions of content.
- The removal of a document from the documentation set.
- Changes made for template compliance.

The revision class **Minor** means that the meaning of the technical content was clarified. Minor changes do not affect protocol interoperability or implementation. Examples of minor changes are updates to clarify ambiguity at the sentence, paragraph, or table level.

The revision class **Editorial** means that the language and formatting in the technical content was changed. Editorial changes apply to grammatical, formatting, and style issues.

The revision class **No change** means that no new technical or language changes were introduced. The technical content of the document is identical to the last released version, but minor editorial and formatting changes, as well as updates to the header and footer information, and to the revision summary, may have been made.

Major and minor changes can be described further using the following change types:

- New content added.
- Content updated.
- Content removed.
- New product behavior note added.
- Product behavior note updated.
- Product behavior note removed.
- New protocol syntax added.
- Protocol syntax updated.
- Protocol syntax removed.
- New content added due to protocol revision.
- Content updated due to protocol revision.
- Content removed due to protocol revision.
- New protocol syntax added due to protocol revision.

- Protocol syntax updated due to protocol revision.
- Protocol syntax removed due to protocol revision.
- New content added for template compliance.
- Content updated for template compliance.
- Content removed for template compliance.
- Obsolete document removed.

Editorial changes are always classified with the change type **Editorially updated**.

Some important terms used in the change type descriptions are defined as follows:

- **Protocol syntax** refers to data elements (such as packets, structures, enumerations, and methods) as well as interfaces.
- **Protocol revision** refers to changes made to a protocol that affect the bits that are sent over the wire.

The changes made to this document are listed in the following table. For more information, please contact protocol@microsoft.com.

Section	Tracking number (if applicable) and description	Major change (Y or N)	Change type
1.2.1 Normative References	Removed reference for [MS-GPNRPT].	N	Content updated.
1.2.2 Informative References	Added reference for [MS-GPNRPT].	N	Content updated.
7 Appendix B: Product Behavior	Modified this section to include references to Windows 8.1 and Windows Server 2012 R2.	Y	Content updated.

9 Index

A

Abstract data model
[client](#) 15
[server](#) 16
[Accepted SignCert Request message example](#) 19
[Applicability](#) 11

C

[Capability negotiation](#) 11
[Challenged SignCert Request message example](#) 21
[Change tracking](#) 26
Client
[abstract data model](#) 15
[higher-layer triggered events](#) 15
[initialization](#) 15
message processing
[creating SignCert Request message](#) 15
[SignCert Response message](#) 16
[other local events](#) 16
sequencing rules
[creating SignCert Request message](#) 15
[processing SignCert Response message](#) 16
[timer events](#) 16
[timers](#) 15

D

Data model - abstract
[client](#) 15
[server](#) 16

E

Examples
[accepted SignCert Request message](#) 19
[challenged SignCert Request message](#) 21
[invalid SignCert Request message](#) 21
[SignCert Request message with invalid credentials](#) 20

F

[Fields - vendor-extensible](#) 11
[Full XML schema](#) 24

G

[Glossary](#) 5

H

Higher-layer triggered events
[client](#) 15
[server](#) 17

I

[Implementer - security considerations](#) 23
[Index of security parameters](#) 23
[Informative references](#) 6
Initialization
[client](#) 15
[server](#) 16
[Introduction](#) 5
[Invalid SignCert Request message example](#) 21

M

Message processing
client
[creating SignCert Request message](#) 15
[SignCert Response message](#) 16
Messages
[Namespaces message](#) 12
[SignCert Request message](#) 12
[SignCert Response message](#) 13
[transport](#) 12

N

[Namespaces message](#) 12
[Normative references](#) 6

O

Other local events
[client](#) 16
[server](#) 18
[Overview \(synopsis\)](#) 7

P

[Parameters - security index](#) 23
[Preconditions](#) 10
[Prerequisites](#) 10
[Product behavior](#) 25

R

References
[informative](#) 6
[normative](#) 6
[Relationship to other protocols](#) 10

S

Security
[implementer considerations](#) 23
[parameter index](#) 23
Sequencing rules
client
[creating SignCert Request message](#) 15
[processing SignCert Response message](#) 16
Server
[abstract data model](#) 16

[higher-layer triggered events](#) 17
[initialization](#) 16
[other local events](#) 18
[timer events](#) 18
[timers](#) 16
[SignCert Request message](#) 12
[SignCert Request message with invalid credentials example](#) 20
[SignCert Response message](#) 13
[Standards assignments](#) 11

T

Timer events
[client](#) 16
[server](#) 18
Timers
[client](#) 15
[server](#) 16
[Tracking changes](#) 26
[Transport](#) 12
Triggered events - higher-layer
[client](#) 15
[server](#) 17

V

[Vendor-extensible fields](#) 11
[Versioning](#) 11

X

[XML schema](#) 24