

# [MS-DCLB-Diff]:

## Desktop Clipboard Protocol

---

### Intellectual Property Rights Notice for Open Specifications Documentation

- **Technical Documentation.** Microsoft publishes Open Specifications documentation (~~“this documentation”~~) for protocols, file formats, data portability, computer languages, and standards ~~as well as overviews of the interaction among each of these technologies~~ support. Additionally, overview documents cover inter-protocol relationships and interactions.
- **Copyrights.** This documentation is covered by Microsoft copyrights. Regardless of any other terms that are contained in the terms of use for the Microsoft website that hosts this documentation, you ~~may~~ can make copies of it in order to develop implementations of the technologies that are described in ~~the Open Specifications~~ this documentation and ~~may~~ can distribute portions of it in your implementations ~~using~~ that use these technologies or in your documentation as necessary to properly document the implementation. You ~~may~~ can also distribute in your implementation, with or without modification, any ~~schema, IDL's~~ schemas, IDLs, or code samples that are included in the documentation. This permission also applies to any documents that are referenced in the Open Specifications-documentation.
- **No Trade Secrets.** Microsoft does not claim any trade secret rights in this documentation.
- **Patents.** Microsoft has patents that ~~may~~ might cover your implementations of the technologies described in the Open Specifications-documentation. Neither this notice nor Microsoft's delivery of ~~the~~ this documentation grants any licenses under those patents or any other Microsoft patents. However, a given Open ~~Specification may~~ Specifications document might be covered by the Microsoft Open Specifications Promise or the Microsoft Community Promise. If you would prefer a written license, or if the technologies described in ~~the Open Specifications~~ this documentation are not covered by the Open Specifications Promise or Community Promise, as applicable, patent licenses are available by contacting [iplg@microsoft.com](mailto:iplg@microsoft.com).
- **Trademarks.** The names of companies and products contained in this documentation ~~may~~ might be covered by trademarks or similar intellectual property rights. This notice does not grant any licenses under those rights. For a list of Microsoft trademarks, visit [www.microsoft.com/trademarks](http://www.microsoft.com/trademarks).
- **Fictitious Names.** The example companies, organizations, products, domain names, ~~e-mail~~ email addresses, logos, people, places, and events that are depicted in this documentation are fictitious. No association with any real company, organization, product, domain name, email address, logo, person, place, or event is intended or should be inferred.

**Reservation of Rights.** All other rights are reserved, and this notice does not grant any rights other than as specifically described above, whether by implication, estoppel, or otherwise.

**Tools.** The Open Specifications ~~documentation~~ does not require the use of Microsoft programming tools or programming environments in order for you to develop an implementation. If you have access to Microsoft programming tools and environments, you are free to take advantage of them. Certain Open Specifications documents are intended for use in conjunction with publicly available ~~standard~~ standards specifications and network programming art; and ~~assumes, as such,~~ assume that the reader either is familiar with the aforementioned material or has immediate access to it.

## Revision Summary

| Date       | Revision History | Revision Class | Comments   |
|------------|------------------|----------------|--|
| 8/14/2009  | 0.1              | Major          | First Release.   |
| 9/25/2009  | 0.1.1            | Editorial      | Changed language and formatting in the technical content.                    |
| 11/6/2009  | 0.1.2            | Editorial      | Changed language and formatting in the technical content.                    |
| 12/18/2009 | 0.1.3            | Editorial      | Changed language and formatting in the technical content.                    |
| 1/29/2010  | 0.2              | Minor          | Clarified the meaning of the technical content.                              |
| 3/12/2010  | 0.2.1            | Editorial      | Changed language and formatting in the technical content.                    |
| 4/23/2010  | 0.2.2            | Editorial      | Changed language and formatting in the technical content.                    |
| 6/4/2010   | 0.3              | Minor          | Clarified the meaning of the technical content.                              |
| 7/16/2010  | 0.3              | None           | No changes to the meaning, language, or formatting of the technical content. |
| 8/27/2010  | 0.3              | None           | No changes to the meaning, language, or formatting of the technical content. |
| 10/8/2010  | 0.3              | None           | No changes to the meaning, language, or formatting of the technical content. |
| 11/19/2010 | 0.3              | None           | No changes to the meaning, language, or formatting of the technical content. |
| 1/7/2011   | 0.3              | None           | No changes to the meaning, language, or formatting of the technical content. |
| 2/11/2011  | 0.3              | None           | No changes to the meaning, language, or formatting of the technical content. |
| 3/25/2011  | 0.3              | None           | No changes to the meaning, language, or formatting of the technical content. |
| 5/6/2011   | 0.3              | None           | No changes to the meaning, language, or formatting of the technical content. |
| 6/17/2011  | 0.4              | Minor          | Clarified the meaning of the technical content.                              |
| 9/23/2011  | 0.4              | None           | No changes to the meaning, language, or formatting of the technical content. |
| 12/16/2011 | 0.4              | None           | No changes to the meaning, language, or formatting of the technical content. |
| 3/30/2012  | 0.4              | None           | No changes to the meaning, language, or formatting of the technical content. |
| 7/12/2012  | 0.4              | None           | No changes to the meaning, language, or formatting of the technical content. |
| 10/25/2012 | 0.4              | None           | No changes to the meaning, language, or formatting of the technical content. |
| 1/31/2013  | 0.4              | None           | No changes to the meaning, language, or formatting of the technical content. |

| <b>Date</b> | <b>Revision History</b> | <b>Revision Class</b> | <b>Comments</b>  |
|-------------|-------------------------|-----------------------|--|
| 8/8/2013    | 0.4                     | None                  | No changes to the meaning, language, or formatting of the technical content. |
| 11/14/2013  | 0.4                     | None                  | No changes to the meaning, language, or formatting of the technical content. |
| 2/13/2014   | 0.4                     | None                  | No changes to the meaning, language, or formatting of the technical content. |
| 5/15/2014   | 0.4                     | None                  | No changes to the meaning, language, or formatting of the technical content. |
| 6/30/2015   | 0.4                     | None                  | No changes to the meaning, language, or formatting of the technical content. |
| 10/16/2015  | 1.0                     | Major                 | Significantly changed the technical content.                                 |

# Table of Contents

|           |  |           |
|-----------|--|-----------|
| <b>1</b>  | <b>Introduction .....</b>                            | <b>6</b>  |
| 1.1       | Glossary .....                                       | 6         |
| 1.2       | References .....                                     | 8         |
| 1.2.1     | Normative References .....                           | 8         |
| 1.2.2     | Informative References .....                         | 9         |
| 1.3       | Overview .....                                       | 9         |
| 1.4       | Relationship to Other Protocols .....                | 9         |
| 1.5       | Prerequisites/Preconditions .....                    | 9         |
| 1.6       | Applicability Statement .....                        | 9         |
| 1.7       | Versioning and Capability Negotiation .....          | 9         |
| 1.8       | Vendor-Extensible Fields .....                       | 10        |
| 1.9       | Standards Assignments.....                           | 10        |
| <b>2</b>  | <b>Messages.....</b>                                 | <b>11</b> |
| 2.1       | Transport .....                                      | 11        |
| 2.2       | Message Syntax.....                                  | 11        |
| 2.2.1     | Common Field Values .....                            | 11        |
| 2.2.1.1   | ClipboardFormatName .....                            | 11        |
| 2.2.1.2   | DDETopicType .....                                   | 12        |
| 2.2.1.3   | ExecuteCommandType .....                             | 12        |
| 2.2.1.4   | Notifications .....                                  | 12        |
| 2.2.1.5   | PaletteEntryFlags .....                              | 13        |
| 2.2.1.6   | SharingStatusType .....                              | 13        |
| 2.2.2     | Control Information .....                            | 13        |
| 2.2.2.1   | EXECCOMMAND .....                                    | 13        |
| 2.2.2.2   | SHARE_LIST_ENTRYA.....                               | 14        |
| 2.2.2.3   | SHARE_LISTA.....                                     | 14        |
| 2.2.2.4   | SHARE_LIST_ENTRYW .....                              | 14        |
| 2.2.2.5   | SHARE_LISTW .....                                    | 15        |
| 2.2.2.6   | CLIPFORMAT_LIST_ENTRYA .....                         | 15        |
| 2.2.2.7   | CLIPFORMAT_LISTA .....                               | 15        |
| 2.2.2.8   | CLIPFORMAT_LIST_ENTRYW.....                          | 15        |
| 2.2.2.9   | CLIPFORMAT_LISTW .....                               | 16        |
| 2.2.3     | Clipbook Data .....                                  | 16        |
| 2.2.3.1   | CLIPDATA_METAFILEPICT .....                          | 16        |
| 2.2.3.2   | CLIPDATA_ENHMETAFILE .....                           | 16        |
| 2.2.3.3   | CLIPDATA_BITMAP.....                                 | 17        |
| 2.2.3.4   | CLIPDATA_PALETTE_ENTRY.....                          | 17        |
| 2.2.3.5   | CLIPDATA_PALETTE .....                               | 17        |
| 2.2.3.6   | CLIPDATA_OTHERFORMATS .....                          | 18        |
| <b>3</b>  | <b>Protocol Details.....</b>                         | <b>19</b> |
| 3.1       | Server Details.....                                  | 20        |
| 3.1.1     | Abstract Data Model.....                             | 20        |
| 3.1.2     | Timers .....   | 20        |
| 3.1.3     | Initialization.....                                  | 20        |
| 3.1.4     | Higher-Layer Triggered Events .....                  | 20        |
| 3.1.5     | Message Processing Events and Sequencing Rules ..... | 21        |
| 3.1.5.1   | Command Message Processing .....                     | 21        |
| 3.1.5.1.1 | CMD_INITSHARE.....                                   | 21        |
| 3.1.5.1.2 | CMD_DELETE .....                                     | 21        |
| 3.1.5.1.3 | CMD_SHARE .....                                      | 21        |
| 3.1.5.1.4 | CMD_UNSHARE.....                                     | 21        |
| 3.1.5.1.5 | CMD_PASTE.....                                       | 21        |
| 3.1.5.2   | Responses to Data Requests.....                      | 21        |

|          |  |           |
|----------|--|-----------|
| 3.1.6    | Timer Events.....                                    | 22        |
| 3.1.7    | Other Local Events.....                              | 22        |
| 3.2      | Client Details.....                                  | 22        |
| 3.2.1    | Abstract Data Model.....                             | 22        |
| 3.2.2    | Timers .....   | 22        |
| 3.2.3    | Initialization.....                                  | 22        |
| 3.2.4    | Higher-Layer Triggered Events .....                  | 23        |
| 3.2.5    | Message Processing Events and Sequencing Rules ..... | 23        |
| 3.2.5.1  | Command Messages.....                                | 23        |
| 3.2.5.2  | Data Requests .....                                  | 23        |
| 3.2.6    | Timer Events.....                                    | 23        |
| 3.2.7    | Other Local Events.....                              | 23        |
| <b>4</b> | <b>Protocol Examples .....</b>                       | <b>24</b> |
| <b>5</b> | <b>Security .....</b>                                | <b>26</b> |
| 5.1      | Security Considerations for Implementers .....       | 26        |
| 5.2      | Index of Security Parameters .....                   | 26        |
| <b>6</b> | <b>Appendix A: Product Behavior .....</b>            | <b>27</b> |
| <b>7</b> | <b>Change Tracking.....</b>                          | <b>28</b> |
| <b>8</b> | <b>Index.....</b>                                    | <b>29</b> |

# 1 Introduction

This is a specification of the Desktop Clipboard Protocol, which uses the **Network Dynamic Data Exchange (NetDDE)** Protocol to implement a distributed store for graphical user interface (GUI) objects for desktop cut-and-paste operations. It specifies the mechanism by which the Windows ClipBook Viewer application (the Windows **clipboard**) communicates information between remote users.

Sections 1.5, 1.8, 1.9, 2, and 3 of this specification are normative ~~and can contain the terms MAY, SHOULD, MUST, MUST NOT, and SHOULD NOT as defined in [RFC2119]. Sections 1.5 and 1.9 are also normative but do not contain those terms.~~ All other sections and examples in this specification are informative.

## 1.1 Glossary

~~The~~This document uses the following terms ~~are specific to this document:~~

**American National Standards Institute (ANSI) character set:** A character set ~~(±)~~ defined by a code page approved by the American National Standards Institute (ANSI). The term "ANSI" as used to signify Windows code pages is a historical reference and a misnomer that persists in the Windows community. The source of this misnomer stems from the fact that the Windows code page 1252 was originally based on an ANSI draft, which became International Organization for Standardization (ISO) Standard 8859-1 [ISO/IEC-8859-1]. In Windows, the ANSI character set can be any of the following code pages: 1252, 1250, 1251, 1253, 1254, 1255, 1256, 1257, 1258, 874, 932, 936, 949, or 950. For example, "ANSI application" is usually a reference to a non-**Unicode** or code-page-based application. Therefore, "ANSI character set" is often misused to refer to one of the character sets defined by a Windows code page that can be used as an active system code page; for example, character sets defined by code page 1252 or character sets defined by code page 950. Windows is now based on **Unicode**, so the use of ANSI character sets is strongly discouraged unless they are used to interoperate with legacy applications or legacy data.

**ASCII:** The American Standard Code for Information Interchange (ASCII) is an 8-bit character-encoding scheme based on the English alphabet. ASCII codes represent text in computers, communications equipment, and other devices that work with text. ASCII refers to a single 8-bit ASCII character or an array of 8-bit ASCII characters with the high bit of each character set to zero.

**big-endian:** Multiple-byte values that are byte-ordered with the most significant byte stored in the memory location with the lowest address.

**bitmap:** A collection of structures that contain a representation of a graphical image, a **logical palette**, dimensions and other information.

**client:** Synonym for client computer (4).

**clipboard:** A program provided by the operating system that enables local data transfer between applications by using the cut, copy, and paste operations.

**clipboard format:** An unsigned integer that uniquely identifies the format of a data packet that is stored in a binary large object (BLOB) and can be shared between processes through the operating system clipboard or other means.

**clipbook:** **Clipboard** data that is stored separately from the system **clipboard**.

**color plane:** One of the dimensions of a color space.

**device-independent bitmap (DIB):** A file format that was designed to help ensure that bitmap graphics that were created by using one application can be loaded and displayed in another application exactly as they appeared in the originating application.

**dynamic data exchange (DDE):** A protocol through which applications can exchange messages and use shared memory to exchange data. Applications can use **DDE** for one-time data transfers and for continuous exchanges in which applications send updates to each other as new data becomes available.

**Dynamic Data Exchange (DDE):** An inter-process communication method that is featured in Windows. DDE allows two or more applications that are running simultaneously to exchange data and commands.

**enhanced metafile format (EMF):** A file format that supports the device-independent definitions of images.

**intensity:** The magnitude of a component color in the color space (1).

**little-endian:** Multiple-byte values that are byte-ordered with the least significant byte stored in the memory location with the lowest address.

**logical palette:** A **palette** that defines colors as device-independent values. Unlike the **system palette**, which has predefined, device-specific color definitions, a logical palette contains color values that can be defined entirely by an application. A logical palette entry is mapped to the **system palette** entry in order for the custom colors to appear when the application is run.

**mapping mode:** The way in which logical (device-independent) coordinates are mapped to device space (device-specific) coordinates. It also specifies the orientation of the axes and size of the units used for drawing operations.

**metafile:** A sequence of record structures that store an image in an application-independent format. Metafile records contain drawing commands, object definitions, and configuration settings. When a metafile is processed, the stored image can be rendered on a display, output to a printer or plotter, stored in memory, or saved to a file or stream.

**METAFILEPICT:** A structure that defines the **metafile** picture format. **METAFILEPICT** is used for exchanging **metafile** data through the **clipboard**. See [MSDN-METAFILEPICT] and [MSDN-CLIPFORM] for further information.

**NetBIOS:** A particular network transport that is part of the LAN Manager protocol suite. **NetBIOS** uses a broadcast communication style that was applicable to early segmented local area networks. The LAN Manager protocols were the default in Windows NT operating system environments prior to Windows 2000 operating system. A protocol family including name resolution, datagram, and connection services. For more information, see [RFC1001] and [RFC1002].

**network dynamic data Exchange (NetDDE):** A technology that allows applications using **dynamic data exchange (DDE)** to transparently share data over a network.

**palette:** An array of values, each element of which contains the definition of a color. The color elements in a palette are often indexed so that clients can refer to the colors, each of which can occupy 24 bits or more, by a number that requires less storage space.

**server:** A computer on which the remote procedure call (RPC) server is executing.

**system palette:** The **palette** that is actually in use to reproduce colors on a device such as a computer screen. A system palette has predefined, device-specific colors that are used by default, so that individual applications do not have to set them up.

**Tag Image File Format (TIFF):** A format for bitmapped image data that comes from scanners, frame grabbers, and photo-retouching applications. It supports the exchange of image data between applications, taking advantage of the varying capabilities of imaging devices. TIFF supports a number of compression schemes that allow the choice of the best space or time tradeoff for applications. For more information see [RFC3302] and [TIFF].

**Unicode:** A character encoding standard developed by the Unicode Consortium that represents almost all of the written languages of the world. The **Unicode** standard [UNICODE5.0.0/2007] provides three forms (UTF-8, UTF-16, and UTF-32) and seven schemes (UTF-8, UTF-16, UTF-16 BE, UTF-16 LE, UTF-32, UTF-32 LE, and UTF-32 BE).

**Windows metafile format (WMF):** A file format used by Windows that supports the definition of images, including a format for clip art in word-processing documents.

**MAY, SHOULD, MUST, SHOULD NOT, MUST NOT:** These terms (in all caps) are used as defined in [RFC2119]. All statements of optional behavior use either MAY, SHOULD, or SHOULD NOT.

## 1.2 References

Links to a document in the Microsoft Open Specifications library point to the correct section in the most recently published version of the referenced document. However, because individual documents in the library are not updated at the same time, the section numbers in the documents may not match. You can confirm the correct section numbering by checking the Errata.

### 1.2.1 Normative References

We conduct frequent surveys of the normative references to assure their continued availability. If you have any issue with finding a normative reference, please contact dochelp@microsoft.com. We will assist you in finding the relevant information.

[ISO/IEC-8859-1] International Organization for Standardization, "Information Technology -- 8-Bit Single-Byte Coded Graphic Character Sets -- Part 1: Latin Alphabet No. 1", ISO/IEC 8859-1, 1998, [http://www.iso.org/iso/home/store/catalogue\\_tc/catalogue\\_detail.htm?csnumber=28245](http://www.iso.org/iso/home/store/catalogue_tc/catalogue_detail.htm?csnumber=28245)

**Note** There is a charge to download the specification.

[MS-DTYP] Microsoft Corporation, "Windows Data Types".

[MS-EMF] Microsoft Corporation, "Enhanced Metafile Format".

[MS-WMF] Microsoft Corporation, "Windows Metafile Format".

[MSDN-DdeClientTransaction] Microsoft Corporation, "DdeClientTransaction function", [http://msdn.microsoft.com/en-us/library/windows/desktop/ms648743\(v=vs.85\).aspx](http://msdn.microsoft.com/en-us/library/windows/desktop/ms648743(v=vs.85).aspx)

[MSDN-DdeConnect] Microsoft Corporation, "DdeConnect function", [http://msdn.microsoft.com/en-us/library/windows/desktop/ms648745\(v=vs.85\).aspx](http://msdn.microsoft.com/en-us/library/windows/desktop/ms648745(v=vs.85).aspx)

[MSDN-DdeCreateDataHandle] Microsoft Corporation, "DdeCreateDataHandle function", [http://msdn.microsoft.com/en-us/library/windows/desktop/ms648747\(v=vs.85\).aspx](http://msdn.microsoft.com/en-us/library/windows/desktop/ms648747(v=vs.85).aspx)

[MSDN-NDdeShareAdd] Microsoft Corporation, "NDdeShareAdd function", [http://msdn.microsoft.com/en-us/library/windows/desktop/aa365766\(v=vs.85\).aspx](http://msdn.microsoft.com/en-us/library/windows/desktop/aa365766(v=vs.85).aspx)

[RFC2119] Bradner, S., "Key words for use in RFCs to Indicate Requirement Levels", BCP 14, RFC 2119, March 1997, <http://www.rfc-editor.org/rfc/rfc2119.txt>

[RFC5234] Crocker, D., Ed., and Overell, P., "Augmented BNF for Syntax Specifications: ABNF", STD 68, RFC 5234, January 2008, <http://www.rfc-editor.org/rfc/rfc5234.txt>



## 1.2.2 Informative References

[MSDN-CLIPBOARD] Microsoft Corporation, "Clipboard", [http://msdn.microsoft.com/en-us/library/ms648709\(VS.85\).aspx](http://msdn.microsoft.com/en-us/library/ms648709(VS.85).aspx)

[MSDN-GlobalLock] Microsoft Corporation, "GlobalLock function", [http://msdn.microsoft.com/en-us/library/windows/desktop/aa366584\(v=vs.85\).aspx](http://msdn.microsoft.com/en-us/library/windows/desktop/aa366584(v=vs.85).aspx)

[MSDN-METAFIPICT] Microsoft Corporation, "METAFIPICT structure", [http://msdn.microsoft.com/en-us/library/ms649017\(VS.85\).aspx](http://msdn.microsoft.com/en-us/library/ms649017(VS.85).aspx)

[MSDN-META] Microsoft Corporation, "Metafiles", [http://msdn.microsoft.com/en-us/library/dd145051\(VS.85\).aspx](http://msdn.microsoft.com/en-us/library/dd145051(VS.85).aspx)

[MSDN-NETDDE] Microsoft Corporation, "Network Dynamic Data Exchange", [http://msdn.microsoft.com/en-us/library/aa365778\(VS.85\).aspx](http://msdn.microsoft.com/en-us/library/aa365778(VS.85).aspx)

## 1.3 Overview

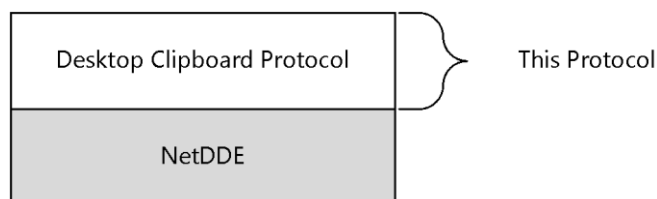
The Desktop Clipboard Protocol is used by the Windows ClipBook Viewer application [MSDN-CLIPBOARD]. This protocol allows for transfer of clipboard data such as text and **bitmap** images between two participating machines.

In this protocol, the **server** role is defined as the actor that shares its clipboard data and provides this data when requested by the **client**. The client role is the actor that requests clipboard data from the server and is able to display this data to the user.

A sequence diagram showing this relationship is presented in section 3.

## 1.4 Relationship to Other Protocols

The Desktop Clipboard Protocol is implemented on top of the NetDDE protocol, as shown in the following diagram.



**Figure 1: Relationship to other protocols**

## 1.5 Prerequisites/Preconditions

The Desktop Clipboard Protocol requires the NetDDE API [MSDN-NETDDE].

## 1.6 Applicability Statement

The Desktop Clipboard Protocol is used for transferring clipboard information between remote machines.

## 1.7 Versioning and Capability Negotiation

The Desktop Clipboard Protocol does not have multiple versions.

## **1.8 Vendor-Extensible Fields**

None.

## **1.9 Standards Assignments**

None.

## 2 Messages

This protocol references commonly used data types as defined in [MS-DTYP].

### 2.1 Transport

The NetDDE API is used to initiate and maintain the network connections used by this protocol.

Desktop Clipboard messages are encapsulated in data blocks delivered using NetDDE as specified in section 3.1. The NetDDE transport ensures that the total message size is known.

### 2.2 Message Syntax

**Note** All unsigned 16-bit and unsigned 32-bit values are specified in **little-endian** format. Depending on the hardware architectures of the client and the server, multiple-byte little-endian versus **big-endian** reordering can determine how values are marshaled by the sender and interpreted by the receiver.

#### 2.2.1 Common Field Values

##### 2.2.1.1 ClipboardFormatName

The ClipboardFormatName constants are null-terminated **ANSI** strings ([ISO/IEC-8859-1]) that specify the **clipboard format**.

| Constant/value                                    | Description  |
|---|--|
| CF_BITMAP<br>"&Bitmap"                            | A handle to a bitmap.  |
| CF_DIB<br>"&DIB Bitmap"                           | A memory object containing a <b>Device-independent bitmap (DIB)</b> structure ([MS-WMF] section 2.2.2.9), which consists of an information header followed by the bitmap bits. |
| CF_DIF<br>"&DIF"                                  | Software Arts' Data Interchange Format.  |
| CF_DSPTTEXT<br>"Disp&lay Text"                    | Text display format associated with a private format.  |
| CF_DSPBITMAP<br>"Displa&y Bitmap"                 | Bitmap display format associated with a private format.  |
| CF_DSPENHMETAFILE<br>"Display En&hanced Metafile" | <b>EMF</b> display format associated with a private format.  |
| CF_DSPMETAFILEPICT<br>"Display Pict&ure"          | <b>Metafile</b> picture display format associated with a private format.   |
| CF_ENHMETAFILE<br>"&Enhanced Metafile"            | A handle to an EMF metafile [MS-EMF].  |
| CF_METAFILEPICT<br>"&Picture"                     | A handle to a metafile picture format.   |
| CF_OEMTEXT<br>"&OEM Text"                         | Text format containing characters in the OEM character set. Each line ends with a CR/LF combination. A null character signals the end of the data.                             |
| CF_PALETTE<br>"Pal&ette"                          | A handle to a color <b>palette</b> .   |
| CF_PENDATA<br>"Pe&n Data"                         | Data for the pen extensions to the Microsoft Windows for Pen Computing.  |
| CF_RIFF<br>"&RIFF"                                | Represents audio data that is more complex than can be represented in a CF_WAVE standard wave format.  |

| Constant/value                    | Description   |
|-----------------------------------|---|
| CF_SYLK<br>"&Syk"                 | Microsoft Symbolic Link (SYLK) format.  |
| CF_TEXT<br>"&Text"                | Text format. Each line ends with a carriage return/linefeed (CR/LF) combination. A null character signals the end of the data. Use this format for ANSI text. |
| CF_TIFF<br>"&T&IFF"               | <b>Tag Image File Format (TIFF).</b>  |
| CF_UNICODETEXT<br>"&Unicode Text" | <b>Unicode</b> text format. Each line ends with a CR/LF combination. A null character signals the end of the data.  |
| CF_WAVE<br>"&Wave Audio"          | Represents audio data in one of the standard wave formats, such as 11 kHz or 22 kHz Pulse Code Modulation (PCM).  |

### 2.2.1.2 DDETopicType

The DDETopicType constants are character strings that specify the string constants used in **dynamic data exchange (DDE)** function calls.

| Constant/value                  | Description  |
|---------------------------------|--|
| SZDDSYS_ITEM_TOPICS<br>"Topics" | A list of the topics that are supported by the server at the current time. |
| SZDDSYS_TOPIC<br>"System"       | The system topic.  |

### 2.2.1.3 ExecuteCommandType

The ExecuteCommandType enumeration specifies the type of command message sent between actors in a **clipboard**-sharing session.

| Constant/value                  | Description   |
|---------------------------------|---|
| CMD_DELETE<br>"[delete]"        | The sender is directing the recipient to remove a clipboard entry from its set of clipboard shares. |
| CMD_INITSHARE<br>"[initshare]"  | The recipient has been requested to initialize its list of clipboard entries intended for sharing.  |
| CMD_PASTE<br>"[paste]"          | The sender is directing the recipient to create a new clipboard entry.                              |
| CMD_SHARE<br>"[markshared]"     | The sender is directing the recipient to share a clipboard entry.                                   |
| CMD_UNSHARE<br>"[markunshared]" | The sender is directing the recipient to stop sharing a clipboard entry.                            |

### 2.2.1.4 Notifications

The Notification constants are used by clients to request server action using the server's **DdeCallback** function.

| Constant/value         | Description  |
|------------------------|--|
| XTYP_ADVREQ<br>0x2022  | Informs the server that a data request is outstanding on the specified topic name and item name pair, and that data corresponding to the pair has changed. |
| XTYP_REQUEST<br>0x20B0 | Requests data from the server.   |
| XTYP_EXECUTE<br>0x4050 | Sends a command string to the server.  |

### 2.2.1.5 PaletteEntryFlags

The PaletteEntryFlags constants are used to describe palette data sent between users in a clipboard-sharing session.

| Constant/value          | Description  |
|-------------------------|--|
| PC_DEFAULT<br>0x0000    | Specifies default behavior for the <b>logical palette</b> entry.   |
| PC_RESERVED<br>0x0001   | Specifies that the logical palette entry be used for palette animation. This flag prevents other windows from matching colors to the palette entry since the color frequently changes. If an unused <b>system palette</b> entry is available, the color is placed in that entry. Otherwise, the color is not available for animation.          |
| PC_EXPLICIT<br>0x0002   | Specifies that the low-order word of the logical palette entry designates a hardware palette index. This flag allows the application to show the contents of the display device palette.   |
| PC_NOCOLLAPSE<br>0x0004 | Specifies that the color be placed in an unused entry in the system palette instead of being matched to an existing color in the system palette. If there are no unused entries in the system palette, the color is matched normally. Once this color is in the system palette, colors in other logical palettes can be matched to this color. |

### 2.2.1.6 SharingStatusType

The SharingStatusType constants are ANSI characters that specify the sharing status of a clipboard.

| Constant/value         | Description                                    |
|------------------------|--|
| STATUS_SHARED<br>"\$"  | The clipboard is shared.                       |
| STATUS_UNSHARED<br>"*" | The clipboard is not shared.                   |
| STATUS_UPDATED<br>"?"  | The clipboard sharing status has been updated. |

## 2.2.2 Control Information

### 2.2.2.1 EXECCOMMAND

The EXECCOMMAND structure specifies state changes for the clipboard-sharing session.

|                           |   |   |   |   |   |   |   |   |   |    |    |    |    |    |    |    |    |    |    |    |    |    |    |    |    |    |    |    |    |    |    |
|---------------------------|---|---|---|---|---|---|---|---|---|----|----|----|----|----|----|----|----|----|----|----|----|----|----|----|----|----|----|----|----|----|----|
| 0                         | 1 | 2 | 3 | 4 | 5 | 6 | 7 | 8 | 9 | 10 | 11 | 12 | 13 | 14 | 15 | 16 | 17 | 18 | 19 | 20 | 21 | 22 | 23 | 24 | 25 | 26 | 27 | 28 | 29 | 30 | 31 |
| ExecuteCommand (variable) |   |   |   |   |   |   |   |   |   |    |    |    |    |    |    |    |    |    |    |    |    |    |    |    |    |    |    |    |    |    |    |
| ...                       |   |   |   |   |   |   |   |   |   |    |    |    |    |    |    |    |    |    |    |    |    |    |    |    |    |    |    |    |    |    |    |
| ShareName (variable)      |   |   |   |   |   |   |   |   |   |    |    |    |    |    |    |    |    |    |    |    |    |    |    |    |    |    |    |    |    |    |    |
| ...                       |   |   |   |   |   |   |   |   |   |    |    |    |    |    |    |    |    |    |    |    |    |    |    |    |    |    |    |    |    |    |    |

**ExecuteCommand (variable):** An array of ANSI characters that specifies the **ExecuteCommandType**. Note that this array is not zero-terminated. The ExecuteCommand value MUST be one of the **ExecuteCommandType** constants (section 2.2.1.3).

**ShareName (variable):** An optional, null-terminated ANSI string that specifies the share on which the command operates. This field MUST NOT be present if **ExecuteCommand** is CMD\_INITSHARE, and it MUST be present if **ExecuteCommand** is not CMD\_INITSHARE.

### 2.2.2.2 SHARE\_LIST\_ENTRYA

The SHARE\_LIST\_ENTRYA structure contains information about a shared clipboard.

|               |   |   |   |   |   |   |   |   |   |                            |    |    |    |    |    |    |    |    |    |    |    |    |    |    |    |    |    |    |    |    |    |
|---------------|---|---|---|---|---|---|---|---|---|----------------------------|----|----|----|----|----|----|----|----|----|----|----|----|----|----|----|----|----|----|----|----|----|
| 0             | 1 | 2 | 3 | 4 | 5 | 6 | 7 | 8 | 9 | 10                         | 11 | 12 | 13 | 14 | 15 | 16 | 17 | 18 | 19 | 20 | 21 | 22 | 23 | 24 | 25 | 26 | 27 | 28 | 29 | 30 | 31 |
| SharingStatus |   |   |   |   |   |   |   |   |   | ShareIdentifier (variable) |    |    |    |    |    |    |    |    |    |    |    |    |    |    |    |    |    |    |    |    |    |
| ...           |   |   |   |   |   |   |   |   |   |                            |    |    |    |    |    |    |    |    |    |    |    |    |    |    |    |    |    |    |    |    |    |

**SharingStatus (1 byte):** An 8-bit unsigned integer that specifies the SharingStatusType (section 2.2.1.6).

**ShareIdentifier (variable):** An array of ANSI characters that specifies the name of the clipboard share. Note: this array is NOT zero-terminated.

### 2.2.2.3 SHARE\_LISTA

The SHARE\_LISTA structure contains information about a set of clipboards. A SHARE\_LISTA structure conforms to the following ABNF [RFC5234]:

```
SHARE_LISTA = SHARE_LIST_ENTRYA *(%x09 SHARE_LIST_ENTRYA) %x00
```

### 2.2.2.4 SHARE\_LIST\_ENTRYW

The SHARE\_LIST\_ENTRYW structure contains information about a shared clipboard.

|               |   |   |   |   |   |   |   |   |   |                            |    |    |    |    |    |    |    |    |    |    |    |    |    |    |    |    |    |    |    |    |    |
|---------------|---|---|---|---|---|---|---|---|---|----------------------------|----|----|----|----|----|----|----|----|----|----|----|----|----|----|----|----|----|----|----|----|----|
| 0             | 1 | 2 | 3 | 4 | 5 | 6 | 7 | 8 | 9 | 10                         | 11 | 12 | 13 | 14 | 15 | 16 | 17 | 18 | 19 | 20 | 21 | 22 | 23 | 24 | 25 | 26 | 27 | 28 | 29 | 30 | 31 |
| SharingStatus |   |   |   |   |   |   |   |   |   | ShareIdentifier (variable) |    |    |    |    |    |    |    |    |    |    |    |    |    |    |    |    |    |    |    |    |    |

...

**SharingStatus (1 byte):** A 16-bit unsigned integer that specifies the SharingStatusType (section 2.2.1.6).

**ShareIdentifier (variable):** An array of Unicode characters that specifies the name of the clipbook share. Note: this array is NOT zero-terminated.

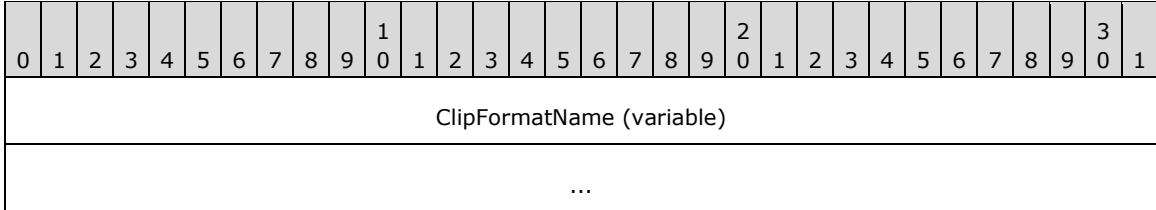
### 2.2.2.5 SHARE\_LISTW

The SHARE\_LISTW structure contains information about a set of clipbooks. A SHARE\_LISTW structure conforms to the following ABNF [RFC5234]:

```
SHARE_LISTW = SHARE_LIST_ENTRYW *(%x00.09 SHARE_LIST_ENTRYW) %x00.00
```

### 2.2.2.6 CLIPFORMAT\_LIST\_ENTRYA

The CLIPFORMAT\_LIST\_ENTRYA structure describes a clipboard format.



**ClipFormatName (variable):** An array of ANSI characters that specifies the name of the clipboard format. For predefined clipboard formats, this value is a ClipboardFormatName constant (section 2.2.1.1). Note: this array is NOT zero-terminated.<1>

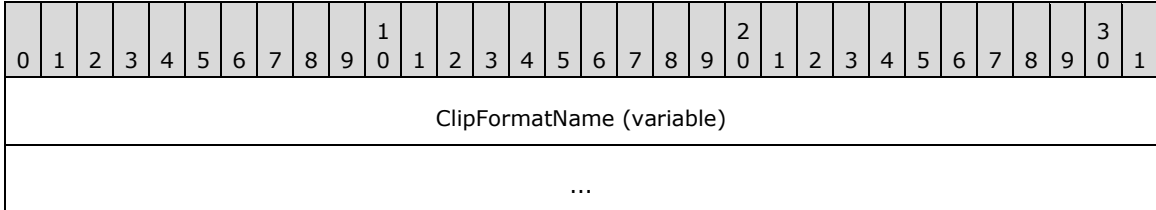
### 2.2.2.7 CLIPFORMAT\_LISTA

The CLIPFORMAT\_LISTA structure describes a set of clipboard formats. A CLIPFORMAT\_LISTA structure conforms to the following ABNF [RFC5234]:

```
CLIPFORMAT_LISTA = CLIPFORMAT_LIST_ENTRYA *(%x09 CLIPFORMAT_LIST_ENTRYA) %x00
```

### 2.2.2.8 CLIPFORMAT\_LIST\_ENTRYW

The CLIPFORMAT\_LIST\_ENTRYW structure describes a clipboard format.



**ClipFormatName (variable):** An array of Unicode characters that specifies the name of the clipboard format. For predefined clipboard formats, this value is a ClipboardFormatName (section 2.2.1.1) constant. Note this array is NOT zero-terminated.<2>

### 2.2.2.9 CLIPFORMAT\_LISTW

The CLIPFORMAT\_LISTW structure describes a set of clipboard formats. A CLIPFORMAT\_LISTW structure conforms to the following ABNF [RFC5234]:

```
CLIPFORMAT_LISTW = CLIPFORMAT_LIST_ENTRYW * (%x00.09 CLIPFORMAT_LIST_ENTRYW) %x00.00
```

## 2.2.3 Clipboard Data

### 2.2.3.1 CLIPDATA\_METAFILEPICT

The CLIPDATA\_METAFILEPICT structure contains metafile data.<3>

| 0                       | 1 | 2 | 3 | 4 | 5 | 6 | 7 | 8 | 9 | 10 | 11 | 12 | 13 | 14 | 15 | 16      | 17 | 18 | 19 | 20 | 21 | 22 | 23 | 24 | 25 | 26 | 27 | 28 | 29 | 30 | 31 |
|-------------------------|---|---|---|---|---|---|---|---|---|----|----|----|----|----|----|---------|----|----|----|----|----|----|----|----|----|----|----|----|----|----|----|
| MappingMode             |   |   |   |   |   |   |   |   |   |    |    |    |    |    |    | xExtent |    |    |    |    |    |    |    |    |    |    |    |    |    |    |    |
| yExtent                 |   |   |   |   |   |   |   |   |   |    |    |    |    |    |    | unused  |    |    |    |    |    |    |    |    |    |    |    |    |    |    |    |
| MetafileData (variable) |   |   |   |   |   |   |   |   |   |    |    |    |    |    |    |         |    |    |    |    |    |    |    |    |    |    |    |    |    |    |    |
| ...                     |   |   |   |   |   |   |   |   |   |    |    |    |    |    |    |         |    |    |    |    |    |    |    |    |    |    |    |    |    |    |    |

**MappingMode (2 bytes):** A 16-bit unsigned integer that specifies the **mapping mode** in which this picture is to be drawn.

**xExtent (2 bytes):** A 16-bit unsigned integer that specifies the width of the rectangle within which the picture is to be drawn. The coordinates are in units that correspond to the mapping mode.

**yExtent (2 bytes):** A 16-bit unsigned integer that specifies the height of the rectangle within which the picture is to be drawn. The coordinates are in units that correspond to the mapping mode.

**unused (2 bytes):** Unused. SHOULD be zero.

**MetafileData (variable):** Data corresponding to a memory-based **Windows metafile format (WMF)** metafile [MS-WMF].<4>

### 2.2.3.2 CLIPDATA\_ENHMETAFILE

The CLIPDATA\_ENHMETAFILE structure contains EMF data.

| 0                          | 1 | 2 | 3 | 4 | 5 | 6 | 7 | 8 | 9 | 10 | 11 | 12 | 13 | 14 | 15 | 16 | 17 | 18 | 19 | 20 | 21 | 22 | 23 | 24 | 25 | 26 | 27 | 28 | 29 | 30 | 31 |
|----------------------------|---|---|---|---|---|---|---|---|---|----|----|----|----|----|----|----|----|----|----|----|----|----|----|----|----|----|----|----|----|----|----|
| EnhMetafileData (variable) |   |   |   |   |   |   |   |   |   |    |    |    |    |    |    |    |    |    |    |    |    |    |    |    |    |    |    |    |    |    |    |
| ...                        |   |   |   |   |   |   |   |   |   |    |    |    |    |    |    |    |    |    |    |    |    |    |    |    |    |    |    |    |    |    |    |

**EnhMetafileData (variable):** Data corresponding to a memory-based EMF metafile [MS-EMF].<5>



### 2.2.3.3 CLIPDATA\_BITMAP

The CLIPDATA\_BITMAP structure contains bitmap data.

|        |   |   |   |   |   |   |   |           |   |    |    |    |    |    |    |            |    |    |    |    |    |    |    |                       |    |    |    |    |    |    |    |
|--------|---|---|---|---|---|---|---|-----------|---|----|----|----|----|----|----|------------|----|----|----|----|----|----|----|-----------------------|----|----|----|----|----|----|----|
| 0      | 1 | 2 | 3 | 4 | 5 | 6 | 7 | 8         | 9 | 10 | 11 | 12 | 13 | 14 | 15 | 16         | 17 | 18 | 19 | 20 | 21 | 22 | 23 | 24                    | 25 | 26 | 27 | 28 | 29 | 30 | 31 |
| Type   |   |   |   |   |   |   |   |           |   |    |    |    |    |    |    | Width      |    |    |    |    |    |    |    |                       |    |    |    |    |    |    |    |
| Height |   |   |   |   |   |   |   |           |   |    |    |    |    |    |    | WidthBytes |    |    |    |    |    |    |    |                       |    |    |    |    |    |    |    |
| Planes |   |   |   |   |   |   |   | BitsPixel |   |    |    |    |    |    |    | unused     |    |    |    |    |    |    |    | BitmapData (variable) |    |    |    |    |    |    |    |
| ...    |   |   |   |   |   |   |   |           |   |    |    |    |    |    |    |            |    |    |    |    |    |    |    |                       |    |    |    |    |    |    |    |

**Type (2 bytes):** A 16-bit unsigned integer that specifies the bitmap type. MUST be set to 0x0000.

**Width (2 bytes):** A 16-bit unsigned integer that specifies the width, in pixels, of the bitmap.

**Height (2 bytes):** A 16-bit unsigned integer that specifies the height, in pixels, of the bitmap.

**WidthBytes (2 bytes):** A 16-bit unsigned integer that specifies the number of bytes in each scan line. This value MUST be divisible by 2, because the system assumes that the bit values in a bitmap form an array that is word aligned.

**Planes (1 byte):** An 8-bit unsigned integer that specifies the count of **color planes**.

**BitsPixel (1 byte):** An 8-bit unsigned integer that specifies the number of bits required to indicate the color of a pixel.

**unused (1 byte):** Unused. SHOULD be zero.

**BitmapData (variable):** An array of byte values forming the bitmap data as specified by the previous fields.

### 2.2.3.4 CLIPDATA\_PALETTE\_ENTRY

The CLIPDATA\_PALETTE\_ENTRY structure contains palette color information.

|     |   |   |   |   |   |   |   |       |   |    |    |    |    |    |    |      |    |    |    |    |    |    |    |       |    |    |    |    |    |    |    |
|-----|---|---|---|---|---|---|---|-------|---|----|----|----|----|----|----|------|----|----|----|----|----|----|----|-------|----|----|----|----|----|----|----|
| 0   | 1 | 2 | 3 | 4 | 5 | 6 | 7 | 8     | 9 | 10 | 11 | 12 | 13 | 14 | 15 | 16   | 17 | 18 | 19 | 20 | 21 | 22 | 23 | 24    | 25 | 26 | 27 | 28 | 29 | 30 | 31 |
| Red |   |   |   |   |   |   |   | Green |   |    |    |    |    |    |    | Blue |    |    |    |    |    |    |    | Flags |    |    |    |    |    |    |    |

**Red (1 byte):** An 8-bit unsigned integer that specifies the red **intensity** value for the palette entry.

**Green (1 byte):** An 8-bit unsigned integer that specifies the green intensity value for the palette entry.

**Blue (1 byte):** An 8-bit unsigned integer that specifies the blue intensity value for the palette entry.

**Flags (1 byte):** An 8-bit unsigned integer that specifies the PaletteEntryFlags (section 2.2.1.5) usage of the palette entry.

### 2.2.3.5 CLIPDATA\_PALETTE

The CLIPDATA\_PALETTE structure contains palette data.

|                       |   |   |   |   |   |   |   |   |   |   |   |   |   |   |   |            |   |   |   |   |   |   |   |   |   |   |   |   |   |   |   |  |  |
|-----------------------|---|---|---|---|---|---|---|---|---|---|---|---|---|---|---|------------|---|---|---|---|---|---|---|---|---|---|---|---|---|---|---|--|--|
| 0                     | 1 | 2 | 3 | 4 | 5 | 6 | 7 | 8 | 9 | 0 | 1 | 2 | 3 | 4 | 5 | 6          | 7 | 8 | 9 | 0 | 1 | 2 | 3 | 4 | 5 | 6 | 7 | 8 | 9 | 0 | 1 |  |  |
| Version               |   |   |   |   |   |   |   |   |   |   |   |   |   |   |   | NumEntries |   |   |   |   |   |   |   |   |   |   |   |   |   |   |   |  |  |
| PalEntries (variable) |   |   |   |   |   |   |   |   |   |   |   |   |   |   |   |            |   |   |   |   |   |   |   |   |   |   |   |   |   |   |   |  |  |
| ...                   |   |   |   |   |   |   |   |   |   |   |   |   |   |   |   |            |   |   |   |   |   |   |   |   |   |   |   |   |   |   |   |  |  |

**Version (2 bytes):** A 16-bit signed integer that specifies the version number of the system. MUST be set to 0x0300.

**NumEntries (2 bytes):** A 16-bit unsigned integer that specifies the number of entries in **PalEntries**.

**PalEntries (variable):** A series of **NumEntries** CLIPDATA\_PALETTE\_ENTRY (section 2.2.3.4) structures that specifies the palette information.

### 2.2.3.6 CLIPDATA\_OTHERFORMATS

The CLIPDATA\_OTHERFORMATS structure contains data corresponding to arbitrary clipboard formats.

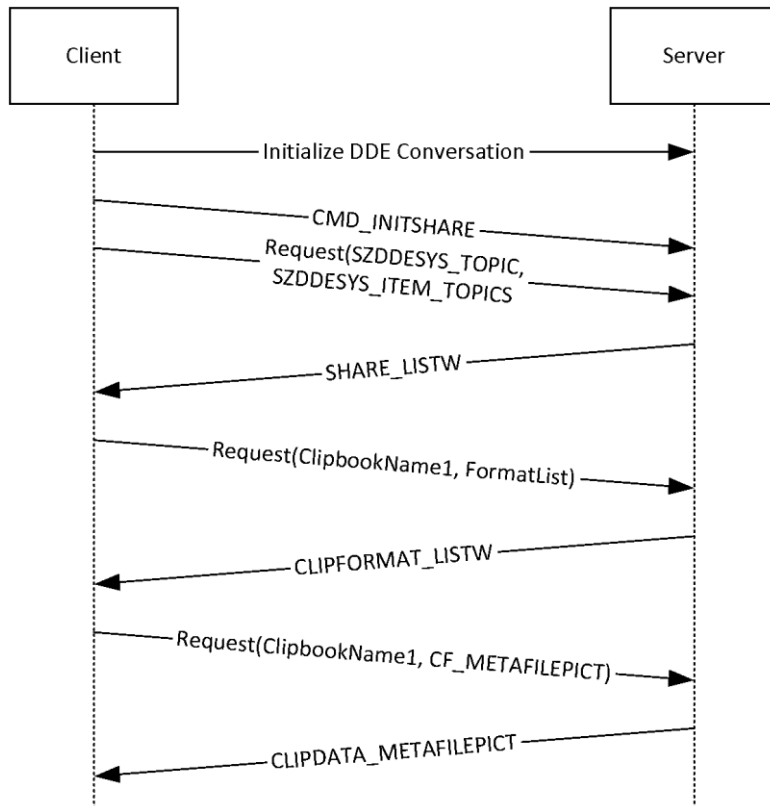
|                            |   |   |   |   |   |   |   |   |   |   |   |   |   |   |   |   |   |   |   |   |   |   |   |   |   |   |   |   |   |   |   |  |  |
|----------------------------|---|---|---|---|---|---|---|---|---|---|---|---|---|---|---|---|---|---|---|---|---|---|---|---|---|---|---|---|---|---|---|--|--|
| 0                          | 1 | 2 | 3 | 4 | 5 | 6 | 7 | 8 | 9 | 0 | 1 | 2 | 3 | 4 | 5 | 6 | 7 | 8 | 9 | 0 | 1 | 2 | 3 | 4 | 5 | 6 | 7 | 8 | 9 | 0 | 1 |  |  |
| OtherFormatData (variable) |   |   |   |   |   |   |   |   |   |   |   |   |   |   |   |   |   |   |   |   |   |   |   |   |   |   |   |   |   |   |   |  |  |
| ...                        |   |   |   |   |   |   |   |   |   |   |   |   |   |   |   |   |   |   |   |   |   |   |   |   |   |   |   |   |   |   |   |  |  |

**OtherFormatData (variable):** Data corresponding to arbitrary clipboard formats.<6>

### 3 Protocol Details

In the Desktop Clipboard Protocol, a server allows a client to access a set of shared clipbooks. Implementations can simultaneously participate in both client and server roles to allow for two-way sharing of clipbooks. Implementations can represent the local clipboard as a clipbook shared by a server, so that client software can interact agnostically with the local clipboard and remote clipbooks.

In the following diagram, a client and server first negotiate a **DDE** conversation as described in sections 3.1.3 and 3.2.3.



**Figure 2: Clipboard sharing session**

The following messages are then transmitted:

1. The client sends a `CMD_INITSHARE` (section 3.1.5.1.1) message, directing the server to initialize its **SharedClipbookData** information.
2. The client sends a DDE request with `SZDDESYS_TOPIC` as the topic and `SZDDESYS_ITEM_TOPICS` as the item (section 2.2.1.2).
3. The server sends a `SHARE_LISTW` (section 2.2.2.5) message containing the set of shared clipbooks.
4. Knowing the available clipbooks, the client sends a DDE request with "ClipbookName1" as the topic and "FormatList" as the item.
5. The server sends a `CLIPFORMAT_LISTW` (section 2.2.2.9) message containing the set of supported formats for the "ClipbookName1" clipbook.

6. Knowing the supported clipboard formats, the client sends a DDE request with "ClipbookName1" as the topic and **CF\_METAFILEPICT** as the item.
7. The server sends a CLIPDATA\_METAFILEPICT (section 2.2.3.1) message containing the metafile information for the "ClipbookName1" clipbook. The client renders this information to the user.

In this exchange, the set of supported formats returned in step 5 includes CF\_METAFILEPICT; but in step 6, the client can request any other clipboard format, using one of the ClipboardFormatName (section 2.2.1.1) values that is supported in the set returned in step 5. The client can continue by requesting other formats.

## 3.1 Server Details

### 3.1.1 Abstract Data Model

This section describes a conceptual model of possible data organization that a server implementation maintains to participate in this protocol. The described organization is provided to facilitate the explanation of how the protocol behaves. This document does not mandate that implementations adhere to this model as long as their external behavior is consistent with that described in this document.

Abstractly, clipbook information is kept as follows:

**ClipbookData.ClipbookName:** A string uniquely identifying the clipbook.

**ClipbookData.SharingStatus:** The SharingStatusType (section 2.2.1.6) value of the clipbook.

**ClipbookData.Formats:** An array of clipboard formats present in the clipbook.

**ClipbookData.Formats[N].FormatName:** The ClipboardFormatName (section 2.2.1.1) value identifying the clipboard format within the clipbook.

**ClipbookData.Formats[N].Data:** The data contained for the clipboard format within the clipbook.

Servers of the Desktop Clipboard Protocol SHOULD maintain the following state.

**SharedClipbookData:** An array of **ClipbookData** entries representing the clipbooks shared by the server.

### 3.1.2 Timers

None.

### 3.1.3 Initialization

A NetDDE server is initialized as follows. See [MSDN-NETDDE] for additional information.

The NetDDE server machine creates a static network DDE share using NDdeShareAdd ([MSDN-NDdeShareAdd]). The DDE share MUST be named "CLPBK\$" and MUST have the static topic list of "ClipSrv\System".

The client initiates the NetDDE conversation as specified in section 3.2.3.

### 3.1.4 Higher-Layer Triggered Events

None.

### 3.1.5 Message Processing Events and Sequencing Rules

Malformed, unrecognized, and out-of-sequence packets MUST be ignored by the server.

#### 3.1.5.1 Command Message Processing

The server MUST handle command messages received as XTYP\_EXECUTE notifications (section 2.2.1.4) to its **DdeCallback** function. An EXECCOMMAND (section 2.2.2.1) data block is extracted using the **DdeGetData** function and is processed as follows.

##### 3.1.5.1.1 CMD\_INITSHARE

The server MUST perform any initialization required to populate **SharedClipbookData**. An implementation can load shared clipbook data from a user-configured persisted storage location.

##### 3.1.5.1.2 CMD\_DELETE

The server MUST remove the **ClipbookData** with the **ClipbookName** specified by **EXECCOMMAND.ShareName** from **SharedClipbookData**.

##### 3.1.5.1.3 CMD\_SHARE

The server MUST find the **ClipbookData** with the **ClipbookName** specified by **EXECCOMMAND.ShareName** and set **SharingStatus** to STATUS\_SHARED.

##### 3.1.5.1.4 CMD\_UNSHARE

The server MUST find the **ClipbookData** with the **ClipbookName** specified by **EXECCOMMAND.ShareName** and set **SharingStatus** to STATUS\_UNSHARED.

##### 3.1.5.1.5 CMD\_PASTE

The server MUST add the **ClipbookData** with the **ClipbookName** specified by **EXECCOMMAND.ShareName** to **SharedClipbookData**.

#### 3.1.5.2 Responses to Data Requests

The server MUST handle data request messages received as XTYP\_ADVREQ or XTYP\_REQUEST notifications (section 2.2.1.4) to its **DdeCallback** function.

If the **DdeCallback** DDE topic is SZDDSYS\_TOPIC and the **DdeCallback** item is SZDDSYS\_ITEM\_TOPICS (section 2.2.1.2):

- If the requested clipboard format is CF\_TEXT, the server MUST respond by creating a SHARE\_LISTA (section 2.2.2.3) structure corresponding with **SharedClipbookData** and returning it via DdeCreateDataHandle ([MSDN-DdeCreateDataHandle]).
- If the requested clipboard format is CF\_UNICODETEXT, the server MUST respond by creating a SHARE\_LISTW (section 2.2.2.5) structure corresponding with **SharedClipbookData** and returning it via DdeCreateDataHandle.

If the **DdeCallback** item is "FormatList":

- If the requested clipboard format is CF\_TEXT, the server MUST respond by creating a CLIPFORMAT\_LISTA (section 2.2.2.7) structure corresponding to the **ClipbookData** with the **ClipbookName** specified by the **DdeCallback** topic and returning it via DdeCreateDataHandle.

- If the requested clipboard format is CF\_UNICODETEXT, the server MUST respond by creating a CLIPFORMAT\_LISTW (section 2.2.2.9) structure corresponding to the **ClipbookData** with the **ClipbookName** specified by the **DdeCallback** topic and returning it via DdeCreateDataHandle.

In all other cases, the server MUST find the clipboard data with the **ClipbookName** specified by the **DdeCallback** topic and the **FormatName** specified by the **DdeCallback** item. This data is then serialized and returned to the client via DdeCreateDataHandle as follows:

- If the requested clipboard format is CF\_ENHMETAFILE, the server MUST return a CLIPDATA\_ENHMETAFILE (section 2.2.3.2) structure.
- If the requested clipboard format is CF\_METAFILEPICT, the server MUST return a CLIPDATA\_METAFILEPICT (section 2.2.3.1) structure.
- If the requested clipboard format is CF\_PALETTE, the server MUST return a CLIPDATA\_PALETTE (section 2.2.3.5) structure.
- If the requested clipboard format is CF\_BITMAP or CF\_DIB, the server MUST return a CLIPDATA\_BITMAP (section 2.2.3.3) structure.
- Otherwise, the server MUST return a CLIPDATA\_OTHERFORMATS (section 2.2.3.6) structure.

### 3.1.6 Timer Events

None.

### 3.1.7 Other Local Events

None.

## 3.2 Client Details

### 3.2.1 Abstract Data Model

This section describes a conceptual model of possible data organization that a client implementation maintains to participate in this protocol. The described organization is provided to facilitate the explanation of how the protocol behaves. This document does not mandate that implementations adhere to this model as long as their external behavior is consistent with that described in this document.

The Desktop Clipboard Protocol provides the means for clients to request the **SharedClipbookData** information from the server, including enumerating the shared clipbooks and retrieving the clipbook data.

A client application can render this information in a form visible to the user, allow the user to copy the clipbook contents into their local system clipboard, or allow the user to save the clipbook contents.

### 3.2.2 Timers

None.

### 3.2.3 Initialization

A NetDDE conversation is initialized by a client as follows. See [MSDN-NETDDE] for additional information.

1. The NetDDE client machine initiates the DDE conversation using DdeConnect ([MSDN-DdeConnect]). The DdeConnect service name MUST be of the form "\\computername\NDDE\$", where computername is the **NetBIOS** name of the server machine. The DdeConnect topic name MUST be "CLPBK\$".
2. The client then sends an XTYP\_EXECUTE notification (section 2.2.1.4) to the server with a CMD\_INITSHARE (section 3.1.5.1.1) message as the contents of DdeClientTransaction ([MSDN-DdeClientTransaction]).

### 3.2.4 Higher-Layer Triggered Events

None.

### 3.2.5 Message Processing Events and Sequencing Rules

Malformed, unrecognized, and out-of-sequence packets MUST be ignored by the client.

#### 3.2.5.1 Command Messages

A client can send command messages as XTYP\_EXECUTE notifications (section 2.2.1.4) to the server's **DdeCallback** function. An EXECCOMMAND (section 2.2.2.1) data block is set up according to the specific command.

#### 3.2.5.2 Data Requests

A client can send data request messages as XTYP\_ADVREQ or XTYP\_REQUEST notifications (section 2.2.1.4) to the server's **DdeCallback** function.

### 3.2.6 Timer Events

None.

### 3.2.7 Other Local Events

None.

## 4 Protocol Examples

In this example, the server machine is sharing a clipboard entry called "ShareName" which contains "Sample Text" as its textual data.

1. The client makes a SZDDSYS\_ITEM\_TOPICS request (section 2.2.1.2) of the server.

The following is the hexadecimal representation of the SHARE\_LISTA (section 2.2.2.3) data the server returns:

|             | x0 | x1 | x2 | x3 | x4 | x5 | x6 | x7 | x8 | x9 | xA | xB | xC | xD | xE | xF |
|-------------|----|----|----|----|----|----|----|----|----|----|----|----|----|----|----|----|
| <b>0000</b> | 3F | 09 | 24 | 53 | 68 | 61 | 72 | 65 | 4E | 61 | 6D | 65 | 00 | 00 | 00 | 00 |

- SharingStatus: (1 byte, offset 0x0000), 0x3F is STATUS\_UPDATED.
  - ShareIdentifier: (0 bytes, offset 0x0001), empty value.
  - Tab delimiter: (1 byte, offset 0x0001), 0x09 as required.
  - SharingStatus: (1 byte, offset 0x0002), 0x24 is STATUS\_SHARED.
  - ShareIdentifier: (9 bytes, offset 0x0003), "ShareName" in **ASCII**.
  - Null terminator: (1 byte, offset 0x000C), 0x00 as required.
2. The client recognizes the "ShareName" share is shared and requests its supported clipboard formats with the "FormatList" DDE message.

The following is the hexadecimal representation of the CLIPFORMAT\_LISTA (section 2.2.2.7) data the server returns:

|             | x0 | x1 | x2 | x3 | x4 | x5 | x6 | x7 | x8 | x9 | xA | xB | xC | xD | xE | xF |
|-------------|----|----|----|----|----|----|----|----|----|----|----|----|----|----|----|----|
| <b>0000</b> | 26 | 55 | 6E | 69 | 63 | 6F | 64 | 65 | 20 | 54 | 65 | 78 | 74 | 09 | 09 | 26 |
| <b>0010</b> | 54 | 65 | 78 | 74 | 09 | 26 | 4F | 45 | 4D | 20 | 54 | 65 | 78 | 74 | 09 | 43 |
| <b>0000</b> | 6C | 69 | 70 | 62 | 6F | 6F | 6B | 20 | 50 | 72 | 65 | 76 | 69 | 65 | 77 | 00 |

- ClipFormatName: (13 bytes, offset 0x0000), "&Unicode Text" in ASCII.
- Tab delimiter: (1 byte, offset 0x000D), 0x09 as required.
- ClipFormatName: (0 bytes, offset 0x000E), empty value.
- Tab delimiter: (1 byte, offset 0x000E), 0x09 as required.
- ClipFormatName: (5 bytes, offset 0x000F), "&Text" in ASCII.
- Tab delimiter: (1 byte, offset 0x0014), 0x09 as required.
- ClipFormatName: (9 bytes, offset 0x0015), "&OEM Text" in ASCII.
- Tab delimiter: (1 byte, offset 0x001E), 0x09 as required.
- ClipFormatName: (16 bytes, offset 0x001F), "Clipboard Preview" in ASCII.



- Null terminator: (1 byte, offset 0x002F), 0x00 as required.
3. The client determines that Unicode text is its preferred format for consumption of the data, so it makes a request for CF\_UNICODETEXT.

The following is the hexadecimal representation of the CLIPDATA\_OTHERFORMATS (section 2.2.3.6) data the server returns:

|             | x0 | x1 | x2 | x3 | x4 | x5 | x6 | x7 | x8 | x9 | xA | xB | xC | xD | xE | xF |
|-------------|----|----|----|----|----|----|----|----|----|----|----|----|----|----|----|----|
| <b>0000</b> | 53 | 00 | 61 | 00 | 6D | 00 | 70 | 00 | 6C | 00 | 65 | 00 | 20 | 00 | 54 | 00 |
| <b>0010</b> | 65 | 00 | 78 | 00 | 74 | 00 | 00 | 00 |    |    |    |    |    |    |    |    |

- OtherFormatData: (20 bytes, offset 0x0000), "Sample Text" in Unicode characters.
- Null terminator: (2 bytes, offset 0x0016), 0x0000 as required.

## **5 Security**

### **5.1 Security Considerations for Implementers**

None.

### **5.2 Index of Security Parameters**

None.

## 6 Appendix A: Product Behavior

The information in this specification is applicable to the following Microsoft products or supplemental software. References to product versions include released service packs.

- Windows 2000 operating system Service Pack 4 (SP4)
- Windows XP operating system
- Windows Server 2003 operating system

Exceptions, if any, are noted below. If a service pack or Quick Fix Engineering (QFE) number appears with the product version, behavior changed in that service pack or QFE. The new behavior also applies to subsequent service packs of the product unless otherwise specified. If a product edition appears with the product version, behavior is different in that product edition.

Unless otherwise specified, any statement of optional behavior in this specification that is prescribed using the terms SHOULD or SHOULD NOT implies product behavior in accordance with the SHOULD or SHOULD NOT prescription. Unless otherwise specified, the term MAY implies that the product does not follow the prescription.

<1> Section 2.2.2.6: In Windows environments, for non-predefined clipboard formats the clipboard name corresponds with return values of the **GetClipboardFormatName** function [MSDN-CLIPBOARD].

<2> Section 2.2.2.8: In Windows environments, for non-predefined clipboard formats, the clipboard name corresponds with return values of the **GetClipboardFormatName** function [MSDN-CLIPBOARD].

<3> Section 2.2.3.1: In Windows environments, these structure fields map to the **METAFILEPICT** structure [MSDN-METAFILEPICT].

<4> Section 2.2.3.1: In Windows environments, this is the data used by the **SetMetaFileBitsEx** function and returned by the **GetMetaFileBitsEx** function [MSDN-META].

<5> Section 2.2.3.2: In Windows environments, this is the data used by the **SetEnhMetaFileBits** function and returned by the **GetEnhMetaFileBits** function [MSDN-META].

<6> Section 2.2.3.6: In Windows environments, the arbitrary clipboard format data is obtained by performing a GlobalLock ([MSDN-GlobalLock]) operation on the handle returned by the **GetClipboardData** function [MSDN-CLIPBOARD].

## 7 Change Tracking

No table of changes is available. The document is either new or has had no changes since its last release.

## 8 Index

### A

Abstract data model  
  client 22  
  server 20  
Applicability 9

### C

Capability negotiation 9  
CF\_BITMAP 11  
CF\_DIB 11  
CF\_DIF 11  
CF\_DSPBITMAP 11  
CF\_DSPENHMETAFILE 11  
CF\_DSPMETAFILEPICT 11  
CF\_DSPTTEXT 11  
CF\_ENHMETAFILE 11  
CF\_METAFILEPICT 11  
CF\_OEMTEXT 11  
CF\_PALETTE 11  
CF\_PENDATA 11  
CF\_RIFF 11  
CF\_SYLK 11  
CF\_TEXT 11  
CF\_TIFF 11  
CF\_UNICODETEXT 11  
CF\_WAVE 11  
Change tracking 28  
Client  
  abstract data model 22  
  higher-layer triggered events 23  
  initialization 22  
  local events 23  
  message processing 23  
    command message 23  
    data requests 23  
    overview 23  
  other local events 23  
  sequencing rules 23  
    command message 23  
    data requests 23  
    overview 23  
  timer events 23  
  timers 22  
CLIPDATA\_BITMAP packet 17  
CLIPDATA\_ENHMETAFILE packet 16  
CLIPDATA\_METAFILEPICT packet 16  
CLIPDATA\_OTHERFORMATS packet 18  
CLIPDATA\_PALETTE packet 17  
CLIPDATA\_PALETTE\_ENTRY packet 17  
CLIPFORMAT\_LIST\_ENTRYA packet 15  
CLIPFORMAT\_LIST\_ENTRYW packet 15  
CMD\_DELETE 12  
CMD\_INITSHARE 12  
CMD\_PASTE 12  
CMD\_SHARE 12  
CMD\_UNSHARE 12

### D

Data model - abstract

- client 22
- server 20

Details 19

## **E**

EXECCOMMAND packet 13

## **F**

Fields – vendor extensible 10  
Fields - vendor-extensible 10

## **G**

Glossary 6

## **H**

Higher-layer triggered events

- client 23
- server 20

## **I**

Implementer - security considerations 26  
Implementer – security considerations 26  
Index of security parameters 26  
Informative references 9  
Initialization

- client 22
- server 20

Introduction 6

## **L**

Local events

- client 23
- server 22

## **M**

Message processing

- client 23
  - command message 23
  - data requests 23
  - overview 23
- server 21
  - command message
    - CMD\_DELETE 21
    - CMD\_INITSHARE 21
    - CMD\_PASTE 21
    - CMD\_SHARE 21
    - CMD\_UNSHARE 21
  - overview 21
  - overview 21
  - response to data requests 21

Messages

- syntax 11
- transport 11

## **N**

Normative references 8

## O

- Other local events
  - client 23
  - server 22
- Overview 9
- Overview (synopsis) 9

## P

- Parameters - security index 26
- Parameters - security index 26
- PC\_DEFAULT 13
- PC\_EXPLICIT 13
- PC\_NO COLLAPSE 13
- PC\_RESERVED 13
- Preconditions 9
- Prerequisites 9
- Product behavior 27
- Protocol Details
  - overview 19

## R

- References 8
  - informative 9
  - normative 8
- Relationship to other protocols 9

## S

- Security
  - implementer considerations 26
  - parameter index 26
- Sequencing rules
  - client 23
    - command message 23
    - data requests 23
    - overview 23
  - server 21
    - command message
      - CMD\_DELETE 21
      - CMD\_INITSHARE 21
      - CMD\_PASTE 21
      - CMD\_SHARE 21
      - CMD\_UNSHARE 21
      - overview 21
    - overview 21
    - response to data requests 21
- Server
  - abstract data model 20
  - higher-layer triggered events 20
  - initialization 20
  - local events 22
  - message processing 21
    - command message
      - CMD\_DELETE 21
      - CMD\_INITSHARE 21
      - CMD\_PASTE 21
      - CMD\_SHARE 21
      - CMD\_UNSHARE 21
      - overview 21
    - overview 21
    - response to data requests 21

- other local events 22
- sequencing rules 21
  - command message
    - CMD\_DELETE 21
    - CMD\_INITSHARE 21
    - CMD\_PASTE 21
    - CMD\_SHARE 21
    - CMD\_UNSHARE 21
  - overview 21
  - overview 21
  - response to data requests 21
- timer events 22
- timers 20
- SHARE\_LIST\_ENTRYA packet 14
- SHARE\_LIST\_ENTRYW packet 14
- Standards assignments 10
- STATUS\_SHARED 13
- STATUS\_UNSHARED 13
- STATUS\_UPDATED 13
- Syntax 11
- SZDDSYS\_ITEM\_TOPICS 12
- SZDDSYS\_TOPIC 12

## **T**

- Timer events
  - client 23
  - server 22
- Timers
  - client 22
  - server 20
- Tracking changes 28
- Transport 11
- Triggered events - higher-layer
  - client 23
  - server 20

## **V**

- Vendor-extensible fields 10
- Versioning 9

## **X**

- XTYP\_ADVREQ 12
- XTYP\_EXECUTE 12
- XTYP\_REQUEST 12